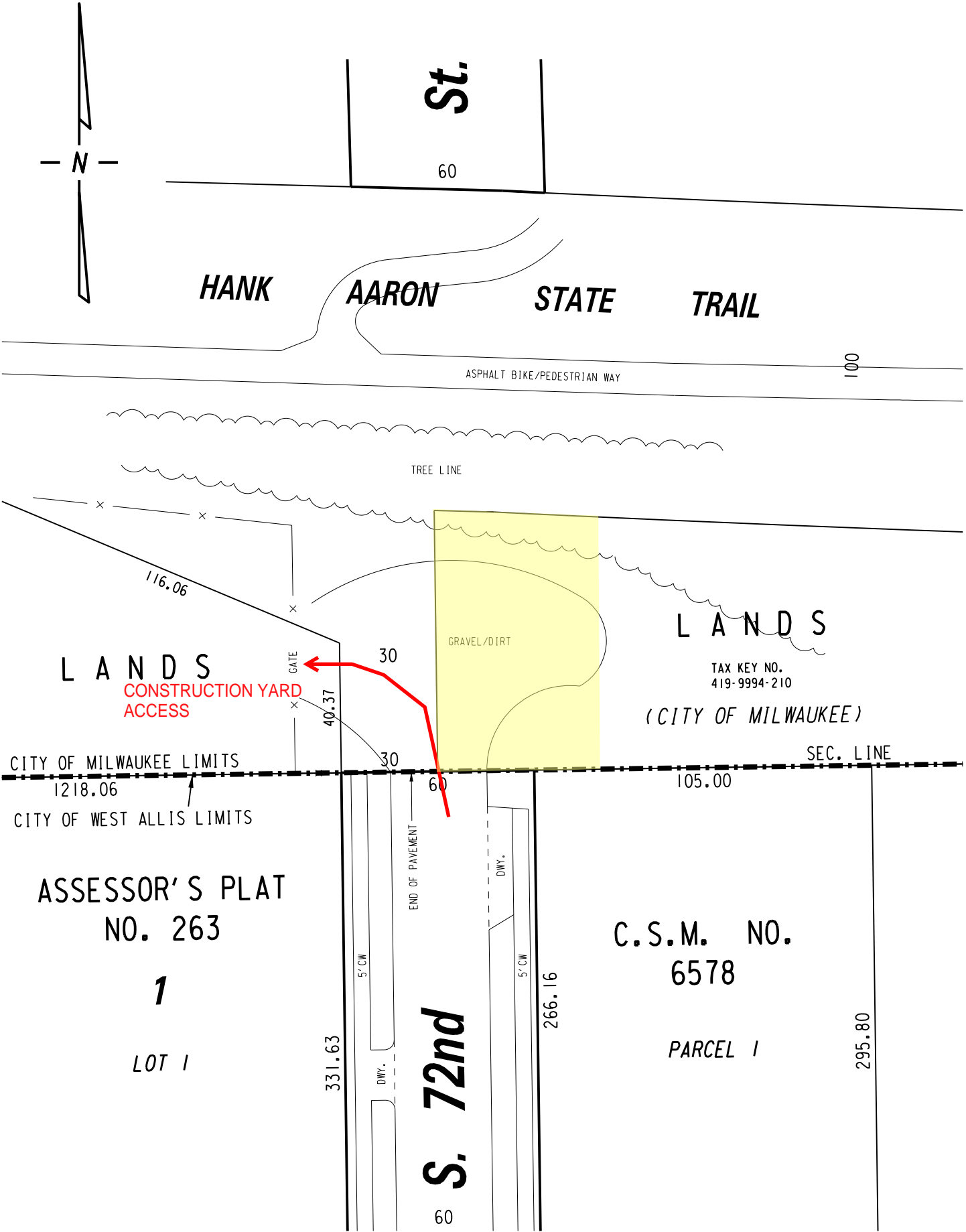


N. W. 1/4 SEC. 34, T.7N., R.21E.

419



CITY OF MILWAUKEE LIMITS

1218.06

CITY OF WEST ALLIS LIMITS

ASSESSOR'S PLAT  
NO. 263

1

LOT 1

C.S.M. NO.  
6578

PARCEL 1

S. W. 1/4 SEC. 34, T.7N., R.21E.

440



PROPOSED PUBLIC  
ACCESS EASEMENT

FILE NO.  
INFRASTRUCTURE SERVICES DIVISION

MILWAUKEE, WISCONSIN

ASSIGNED TO: W. FUCHS

CH'K'D. BY: W. FUCHS

DRAWN BY: W.F.

DATE:

PROJECT/GRANT NO.: WK52360093

SCALE: 1" = 40'

APPROVED BY:

PRELIMINARY MAP: 10-9-2020