



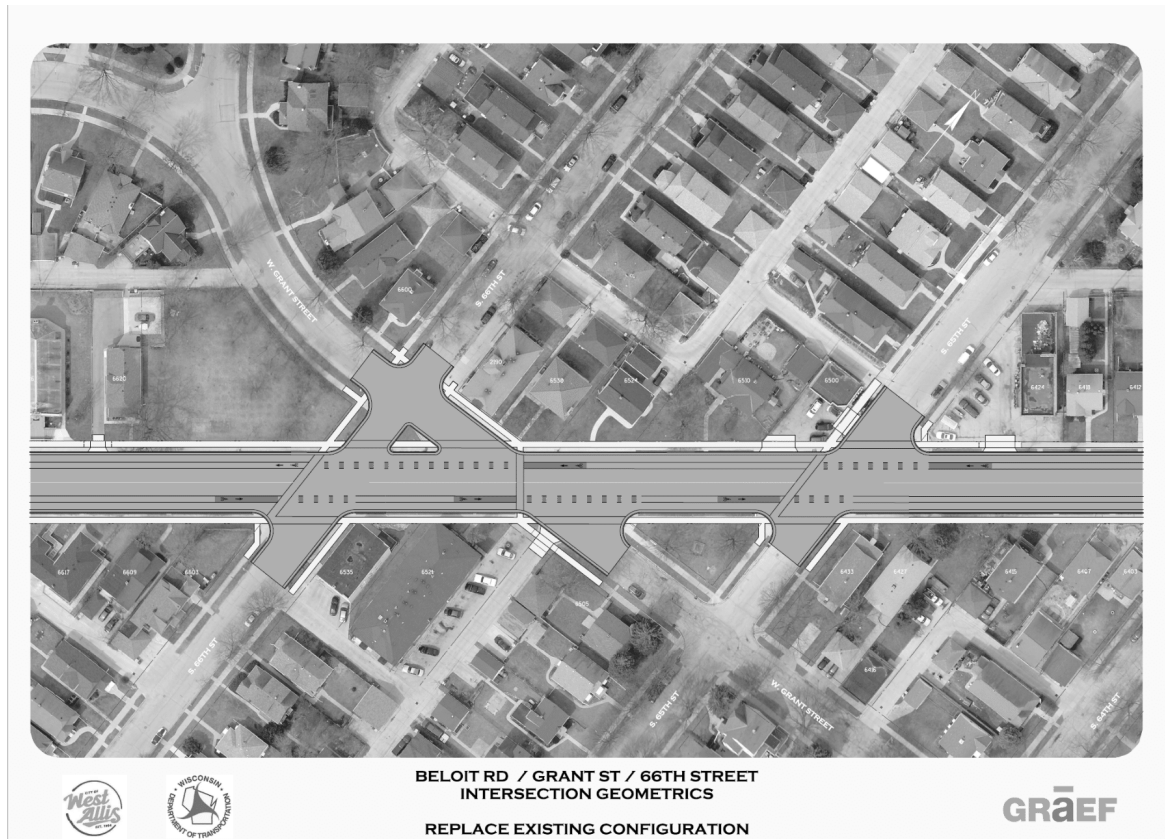
Beloit Rd. Community Feedback Survey

We are interested in understanding how the local community feels about the proposed access changes on W. Beloit Road at the intersections of Grant, 65th and 66th Streets. We greatly appreciate you taking the time to share your thoughts.

Below, you will see illustrations of the current intersection and three proposed alternatives to change the intersection. The green shaded areas in these illustrations indicate portions of streets that would be closed if modifications were made. Please review the illustrations and answer the questions below each image.

This survey will close at 8 a.m. on Monday, Aug. 17. Thank you again for your time and insights.

Existing Intersection

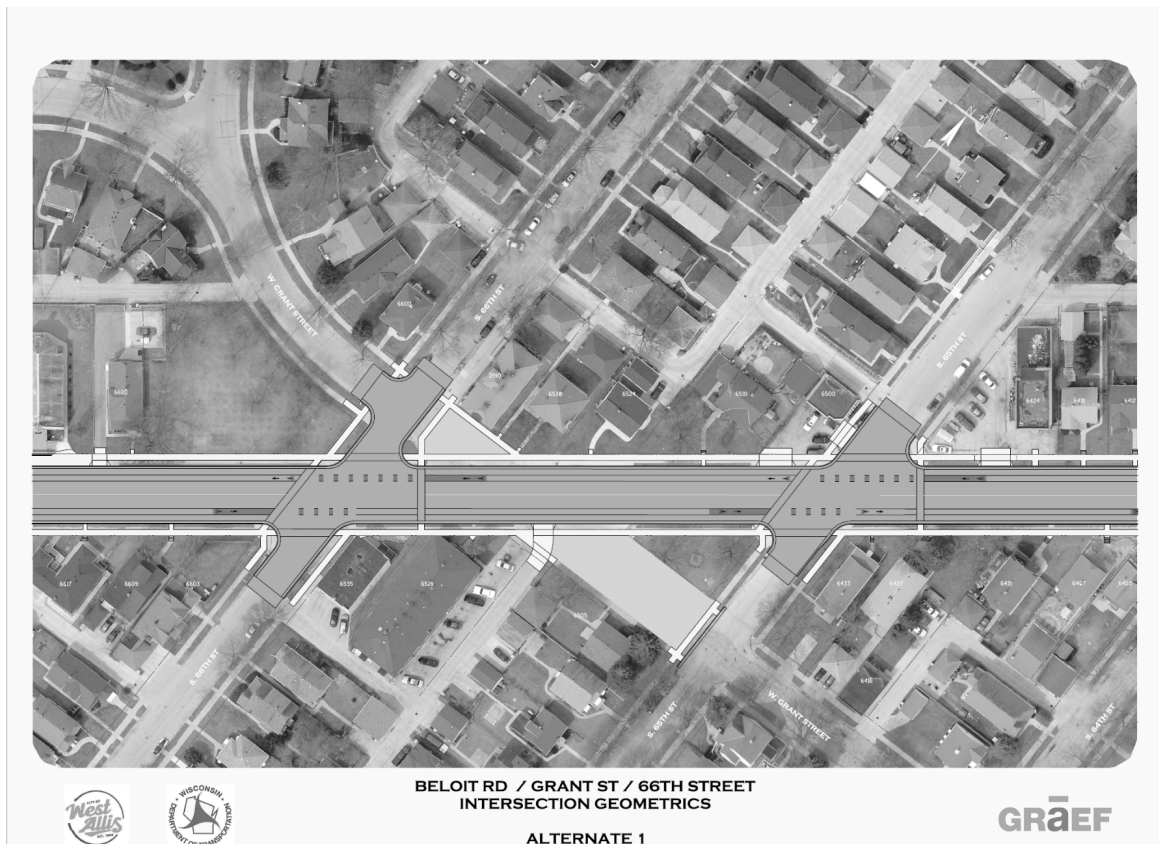


1. How much do you support or oppose leaving the intersection as is?

Strongly Support	Somewhat Support	Neither Support or Oppose	Somewhat Oppose	Strongly Oppose
<input type="radio"/>	<input type="radio"/>	<input type="radio"/>	<input type="radio"/>	<input type="radio"/>

2. Regarding your response to Question 1, why do you feel that way?

Alternative 1

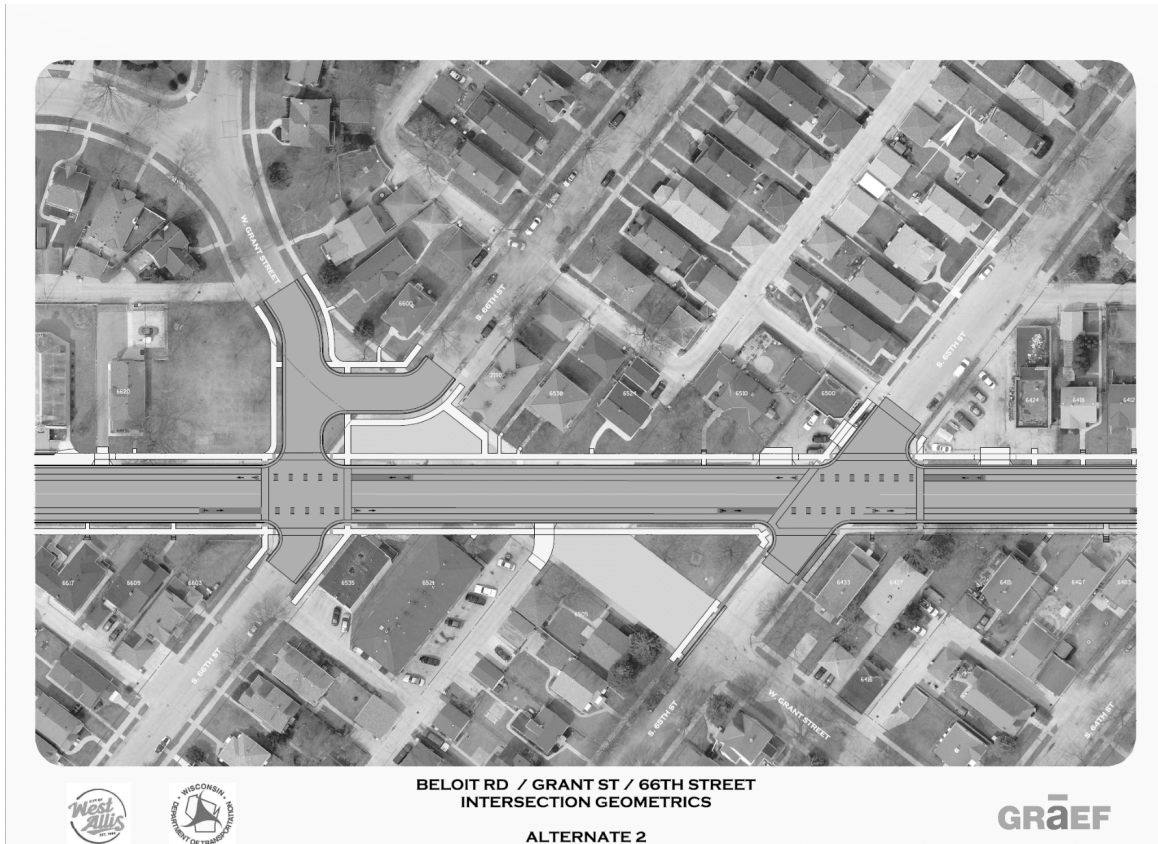


3. How much do you support or oppose Alternative 1 that closes Grant Street?

Strongly Support	Somewhat Support	Neither Support or Oppose	Somewhat Oppose	Strongly Oppose
<input type="radio"/>	<input type="radio"/>	<input type="radio"/>	<input type="radio"/>	<input type="radio"/>

4. Regarding Question 3, why do you feel that way?

Alternative 2



5. How much do you support or oppose Alternative 2 that closes Grant Street and realigns the 66th Street intersection to a 90 degree angle?

Strongly Support	Somewhat Support	Neither Support or Oppose	Somewhat Oppose	Strongly Oppose
<input type="radio"/>	<input type="radio"/>	<input type="radio"/>	<input type="radio"/>	<input type="radio"/>

6. Regarding Question 5, why do you feel that way?

Alternative 3



7. How much do you support or oppose Alternative 3 that closes Grant Street and 65th Street?

Strongly Support	Somewhat Support	Neither Support or Oppose	Somewhat Oppose	Strongly Oppose
<input type="radio"/>	<input type="radio"/>	<input type="radio"/>	<input type="radio"/>	<input type="radio"/>

8. Regarding Question 7, why do you feel that way?

9. How much do you support or oppose a combination of Alternative 2 and Alternative 3 that closes Grant Street and 65th Street and creates a 90 degree angle at 66th Street?

Strongly Support	Somewhat Support	Neither Support or Oppose	Somewhat Oppose	Strongly Oppose
<input type="radio"/>	<input type="radio"/>	<input type="radio"/>	<input type="radio"/>	<input type="radio"/>

10. Regarding Question 9, why do you feel that way?

11. Some of the proposed alternate plans for this intersection will result in more green space in the area. What amenities would you like to see in these spaces, or how would you like to see them utilized?

- ☐ Benches/extra seating
- ☐ Picnic tables
- ☐ Flower beds/landscaping
- ☐ Trees
- ☐ Public art
- ☐ Childrens activities/interactive play areas
- ☐ Pathways/foot paths
- ☐ Other (please specify)