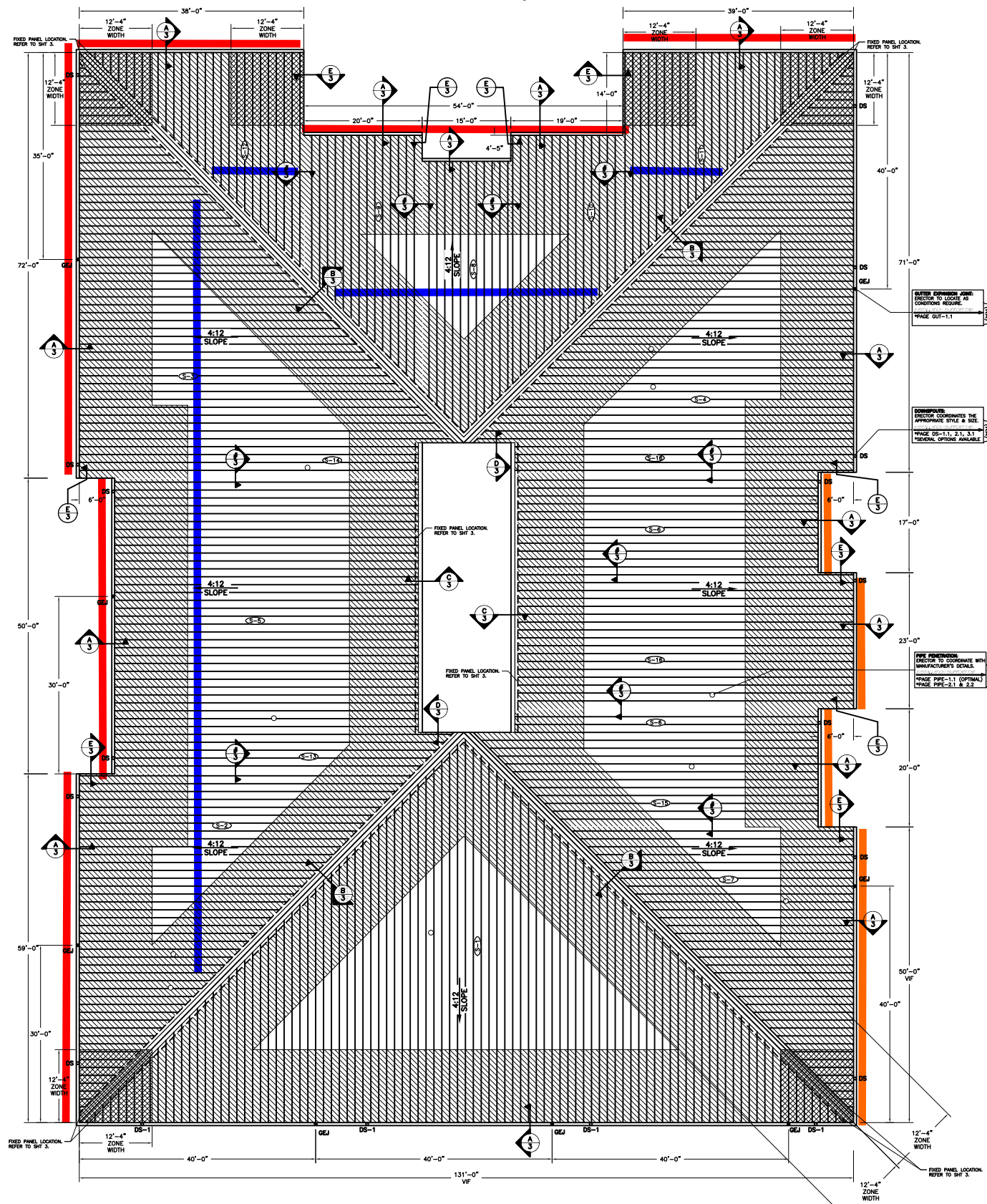


— New Snow Stop
— Proposed Snow Guards



ROOF PLAN
 ARCH. REF.: SKETCH PER REP

TRIM LAP DETAILS:
 ERECTOR TO COORDINATE WITH MANUFACTURER'S DETAILS.
 INSTALLATION SUPPORT TAB
 *REFER TO TRIM LAP DETAILS IN THIS SECTION.

SMACNA GUIDELINES:
 GARLAND RECOMMENDS FOLLOWING SMACNA GUIDELINES FOR THE SIZING AND LOCATION OF GUTTERS, DOWNSPOUTS, AND EXPANSION JOINTS.

ERECTOR NOTE:
 ALL MATERIAL SUPPLIED IS 24 GA GALVALUME. ALL TRIM COMPONENTS ARE TO BE FABRICATED BY THE ERECTOR FROM FLAT SHEET SUPPLIED.

PANEL CLIP SPACING:

PROVIDED BELOW ARE THE **MAXIMUM** ALLOWABLE ROOF PANEL CLIP SPACINGS.

ROOF PANEL CLIPS MAY BE INSTALLED CLOSER TOGETHER THAN THE ALLOWABLE O.C. MAXIMUMS IF JOB-SITE CONDITIONS REQUIRE. HOWEVER, PANEL CLIPS MUST NOT EXCEED THE MANUFACTURER'S PROVIDED O.C. MAXIMUMS.

ZONE DESIGNATION:	ZONE TYPE:	DESCRIPTION:	CLIP SPACING:
□	ZONE 1	(Field of Roof)	5'-0" o.c. MAX.
▨	ZONE 2	(Perimeters)	4'-1" o.c. MAX.
▩	ZONE 3	(Corners)	2'-4" o.c. MAX.

FIXED PANEL CLIP LOCATIONS:

LINE TYPE:	DESCRIPTION:	EXPLANATION:
---	PANEL FIXED LOCATION	DESIGNATES A ROW OF 'FIXED' PANEL CLIPS.

SUBSTRATE LENGTH SCHEDULE:

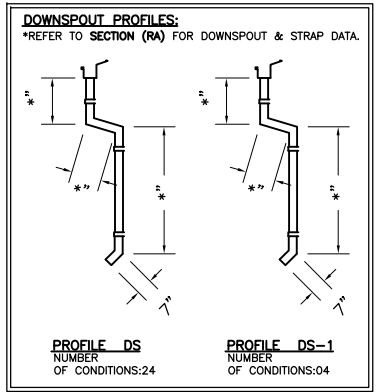
PROVIDED BELOW ARE **ESTIMATED SUBSTRATE LENGTHS (NOT PANEL LENGTHS)**, AS PROVIDED TO THE GARLAND COMPANY OR AS SCALED BY THE GARLAND COMPANY FROM CONSTRUCTION DRAWINGS.

- THESE SUBSTRATE LENGTHS ARE PROVIDED FOR REVIEW AND **MUST BE FIELD VERIFIED**.
- ERECTOR MUST THEN REFERENCE THE APPROPRIATE DETAILS WITHIN THE SHOP DRAWINGS TO CALCULATE THE CORRECT ROOF PANEL LENGTHS REQUIRED. YOU MAY NOTE THESE CALCULATED PANEL LENGTHS IN THE SPACES PROVIDED BELOW.
- ERECTOR TO COORDINATE JOB SITE CONDITIONS WITH SHOP DRAWING DETAILS TO DETERMINE REQUIRED PANEL QUANTITIES AND LENGTHS. THIS ITEMIZED CUT IS TO BE FORWARDED TO THE GARLAND COMPANY FOR MATERIAL RELEASE AND PRODUCTION.

DO NOT USE THE SUBSTRATE LENGTHS AS THE PANEL LENGTHS!

SUBSTRATE DESIGNATION:	SUBSTRATE LENGTH:	CALCULATE:	REQUIRED PANEL LENGTHS:
(S-1)	69'-7"	NOTE: Use the shop drawing details to adjust the substrate length dimension to the panel length required.	=
(S-2)	61'-4"		=
(S-3)	68'-7"		=
(S-4)	69'-7"		=
(S-5)	54'-11"		=
(S-6)	54'-10"		=
(S-7)	52'-9"		=
(S-8)	50'-2"		=
(S-9)	47'-4"		=
(S-10)	46'-5"		=
(S-11)	41'-2"		=
(S-12)	40'-8"		=
(S-13)	62'-3"		=
(S-14)	61'-3"		=
(S-15)	63'-3"		=
(S-16)	61'-2"		=

IMPORTANT READ:
 THE ERECTOR HAS THE SOLE RESPONSIBILITY TO COORDINATE THE SHOP DRAWINGS WITH THE ACTUAL JOB SITE CONDITIONS TO DETERMINE AN ACCURATE AND ITEMIZED MATERIAL 'CUT LIST'. THIS IS CRUCIAL FOR MATERIAL RELEASE AND PANEL PRODUCTION.



WEST ALLIS POLICE DEPARTMENT
 WEST ALLIS, WI

ARCHITECT: N/A
 DATE: 06/26/14
 DWG BY: MEC
 CHK BY: CG

PM: TANT, AMANDA
 AGENT: RYAN OWSIANNY

CUSTOMER: CITY OF WEST ALLIS

REV: 1 DATE: 08/01/14
 2 DATE: 9/18/14
 3 DATE: --/--/--
 4 DATE: --/--/--

THE GARLAND COMPANY INC.
 3800 EAST 91st STREET - CLEVELAND, OHIO 44105-2197
 PHONE (800) 321-9336 / FAX (216) 641-0633

SHEET: 2 OF 3
 JOB NUMBER: 18344

ALL ROOF DIMENSIONS MUST BE FIELD VERIFIED FOR REVIEW