

CONVENTIONAL SYMBOLS

SECTION LINE	---	SECTION CORNER SYMBOL		R/W MONUMENT (TO BE SET)	●
QUARTER LINE	---	SECTION CORNER MONUMENT		NON-MONUMENTED R/W POINT	○
SIXTEENTH LINE	---	GEODETIC SURVEY MONUMENT		FOUND IRON PIN (1-INCH UNLESS NOTED)	IP
NEW REFERENCE LINE	---	SIXTEENTH CORNER MONUMENT		OFF-PREMISE SIGN	
NEW R/W LINE	---	SIGN		PARCEL NUMBER (25)	UTILITY NUMBER (40)
EXISTING R/W OR HE LINE	---	PARALLEL OFFSETS			
PROPERTY LINE	---				
LOT, TIE & OTHER MINOR LINES	---				
SLOPE INTERCEPT	---				
CORPORATE LIMITS	---				
UNDERGROUND FACILITY (COMMUNICATIONS, ELECTRIC, ETC)	---				
NEW R/W (FEE OR HE) (HATCHING VARIES BY OWNER)	---				
TEMPORARY LIMITED EASEMENT AREA	---				
EASEMENT AREA (PERMANENT LIMITED OR RESTRICTED DEVELOPMENT)	---				
TRANSMISSION STRUCTURES	---				
BUILDING TO BE REMOVED	---				
BRIDGE	---				

STATE OF WISCONSIN DEPARTMENT OF TRANSPORTATION

PLAN OF PROPOSED IMPROVEMENT W. BELOIT ROAD S. 60TH STREET TO W. LINCOLN AVENUE LOCAL ROAD MILWAUKEE COUNTY

STATE PROJECT NUMBER
2525-03-71

R/W PROJECT NUMBER 2525-03-01	SHEET NUMBER 4.01	TOTAL SHEETS 13
PLAT OF RIGHT OF WAY REQUIRED FOR W. BELOIT ROAD S. 60TH STREET TO W. LINCOLN AVENUE		
W. BELOIT ROAD		MILWAUKEE CO.
CONSTRUCTION PROJECT NUMBER 2525-03-71		

CAUTION
THIS PLAT IS FOR ILLUSTRATIVE PURPOSES ONLY.
DEEDS MUST BE CHECKED TO DETERMINE
PROPERTY BOUNDARIES.

CURVE DATA

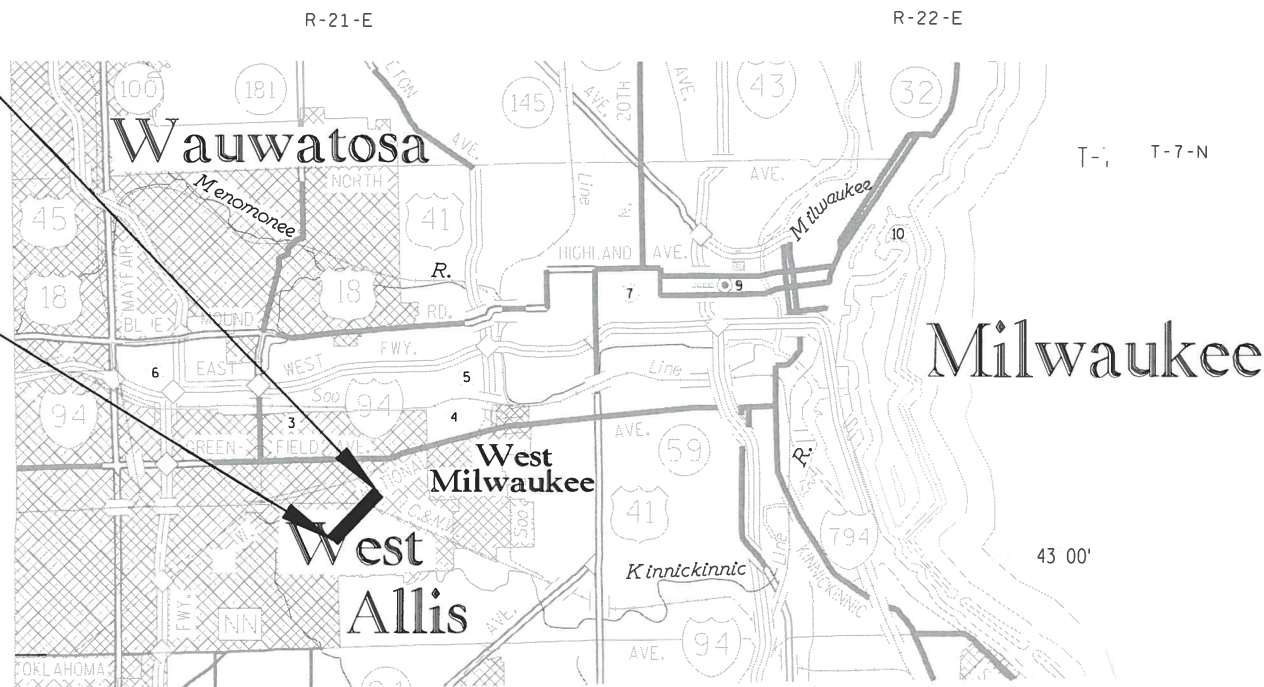
LONG CHORD	LCH
LONG CHORD BEARING	LCB
RADIUS	R
DEGREE OF CURVE	D
CENTRAL ANGLE	Δ/DELTA
LENGTH OF CURVE	L
TANGENT	T
DIRECTION AHEAD	DA
DIRECTION BACK	DB

CONVENTIONAL ABBREVIATIONS

ACCESS RIGHTS	AR	POINT OF BEGINNING	POB
ACRES	AC	POINT OF CURVATURE	PC
AHEAD	AH	POINT OF COMPOUND CURVE	PCC
ALUMINUM	ALUM	POINT OF INTERSECTION	PI
AND OTHERS	ET AL	POINT OF TANGENCY	PT
BACK	BK	PROPERTY LINE	PL
BLOCK	BLK	RECORDED AS (100')	R/I
CENTERLINE	C	REEL / IMAGE	R
CERTIFIED SURVEY MAP	CSM	REFERENCE LINE	REM
CONCRETE	CONC	REMAINING	RDE
COUNTY	CO	RESTRICTIVE DEVELOPMENT EASEMENT	RT
COUNTY TRUNK HIGHWAY	CTH	RIGHT	R/W
DISTANCE	DIST	RIGHT OF WAY	SEC
CORNER	COR	SECTION	SEPV
DOCUMENT NUMBER	DOC	SEPTIC VENT	SF
EASEMENT	EASE	SQUARE FEET	STH
EXISTING	EX	STATE TRUNK HIGHWAY	STA
GAS VALVE	GV	STATION	TP
GRID NORTH	GN	TELEPHONE PEDESTAL	TLE
HIGHWAY EASEMENT	HE	TEMPORARY LIMITED EASEMENT	TPP
IDENTIFICATION	ID	TRANSPORTATION PROJECT PLAT	USH
LAND CONTRACT	LC	UNITED STATES HIGHWAY	V
LEFT	LT	VOLUME	Y,X
MONUMENT	MON	GRID COORDINATES	N,E
NATIONAL GEODETIC SURVEY NUMBER	NGS	GROUND COORDINATES	
OUTLOT	NO		
PAGE	OL		
PERMANENT LIMITED EASEMENT	P		
	PLE		

END RELOCATION ORDER
STA. 49+72.01
1,977.78' NORTH OF AND
98.50' WEST OF THE
SE. CORNER OF THE
SE. 1/4, SECTION 3,
T. 6N., R. 21E.
N=374,032.40
E=2,538,431.50

BEGIN RELOCATION ORDER
STA. 16+93.41
7.87' SOUTH OF AND
33.17' EAST OF THE
SW. CORNER OF THE
SE. 1/4, SECTION 3,
T. 6N., R. 21E.
N=371,960.98
E=2,535,890.17



TOTAL NET LENGTH OF CENTERLINE = 0.607 MI.

NOTES:

COORDINATES SHOWN ON THIS PLAT ARE ORIENTED TO THE WISCONSIN STATE PLANE COORDINATE SYSTEM, SOUTH ZONE, NAD27. ALL PLAT DISTANCES ARE GROUND LENGTH AND MAY BE CONVERTED TO GRID LENGTH BY MULTIPLYING THE DISTANCE BY THE GRID FACTOR PROVIDED ON THE DETAIL SHEETS.

ALL NEW RIGHT OF WAY MONUMENTS WILL BE TYPE 2 MONUMENTS AND WILL BE PLACED PRIOR TO THE COMPLETION OF THE PROJECT. NEW RIGHT OF WAY MONUMENTATION THAT FALLS ON CONCRETE SURFACES WILL BE MONUMENTED BY A CHISELED CROSS ON 5' OFFSETS.

RIGHT OF WAY BOUNDARIES ARE DEFINED WITH COURSES OF THE PERIMETER OF THE HIGHWAY LANDS REFERENCED TO THE U.S. PUBLIC LAND SURVEY OR OTHER SURVEYS OF PUBLIC RECORD.

A TEMPORARY LIMITED EASEMENT (TLE) IS A RIGHT FOR CONSTRUCTION PURPOSES, AS DEFINED HEREIN, INCLUDING THE RIGHT TO OPERATE THE NECESSARY EQUIPMENT THEREON AND THE RIGHT OF INGRESS AND EGRESS, AS LONG AS REQUIRED FOR SUCH PUBLIC PURPOSE, INCLUDING THE RIGHT TO PRESERVE, PROTECT, REMOVE, OR PLANT THEREON ANY VEGETATION THAT HIGHWAY AUTHORITIES DEEM NECESSARY OR DESIRABLE. ALL TLE'S EXPIRE AT THE COMPLETION OF THE CONSTRUCTION PROJECT FOR WHICH THIS INSTRUMENT IS GIVEN.

PROPERTY LINES SHOWN ON THIS PLAT ARE DRAWN FOR DATA DERIVED FROM MAPS AND DOCUMENTS OF PUBLIC RECORD AND/OR EXISTING OCCUPATIONAL LINES. THIS PLAT MAY NOT BE A TRUE REPRESENTATION OF EXISTING PROPERTY LINES, EXCLUDING RIGHT-OF-WAY LINES, AND SHOULD NOT BE USED AS A SUBSTITUTE FOR AN ACCURATE FIELD SURVEY.

CONVENTIONAL UTILITY SYMBOLS

WATER	---
GAS	---
TELEPHONE	---
OVERHEAD TRANSMISSION LINES	---
ELECTRIC	---
CABLE TELEVISION	---
FIBER OPTIC	---
SANITARY SEWER	---
STORM SEWER	---

ORIGINAL PLAT PREPARED BY

GRÄEF

CARLA J. ROLLINS
S-3207
SHEBOYGAN, WI

LAND SURVEYOR

03/25/2021 *Carla J. Rollins*

REVISION DATE	CITY OF WEST ALLIS
APPROVED FOR THE CITY	<i>Traci Bender</i>
DATE: 3/29/2021	(Signature)

SCHEDULE OF LANDS & INTERESTS REQUIRED

OWNER'S NAMES ARE SHOWN FOR REFERENCE PURPOSES ONLY AND ARE SUBJECT TO CHANGE PRIOR TO THE TRANSFER OF LAND INTERESTS TO THE DEPARTMENT.

PARCEL NUMBER	SHEET NUMBER	OWNER	INTEREST REQUIRED	TOTAL ACRES	NEW	EXISTING	TOTAL	REMAINING ACRES	TEMP. ACRES	PERM. ACRES	PARCEL NUMBER
1	4.07	Karvansara LLC, a Wisconsin limited liability company	TLE	0.135	0.000	0.000	0.000	0.135	0.004	0.000	1
2	4.07	Beloit Road Properties, LLC	TLE	0.164	0.000	0.000	0.000	0.164	0.009	0.000	2
3	4.07 / 4.08	Highland Commons, LLC	TLE	1.122	0.000	0.000	0.000	1.122	0.051	0.000	3
4	4.07	Lincoln Avenue Properties, LLC	TLE	0.403	0.000	0.000	0.000	0.403	0.049	0.000	4
5	4.07	Land contract between Carol L. McMahon, as Vendor, and Sportz Medicine LLC, a Wisconsin limited liability company, as Purchaser	TLE	0.081	0.000	0.000	0.000	0.081	0.006	0.000	5
6	N/A	INTENTIONALLY OMITTED	NONE	0.000	0.000	0.000	0.000	0.000	0.000	0.000	6
7	4.08	New Vintage Church, Inc.	TLE	0.220	0.000	0.000	0.000	0.220	0.013	0.000	7
8	4.08	Vicky Hanson	TLE	0.110	0.000	0.000	0.000	0.110	0.006	0.000	8
9	4.08	Dominic D. Sanfelippo	TLE	0.354	0.000	0.000	0.000	0.354	0.025	0.000	9
10	N/A	INTENTIONALLY OMITTED	NONE	0.000	0.000	0.000	0.000	0.000	0.000	0.000	10
11	4.08	Brian K. Taborski	TLE	0.099	0.000	0.000	0.000	0.099	0.016	0.000	11
12	4.08	Jeffrey T. Anderson	TLE	0.097	0.000	0.000	0.000	0.097	0.006	0.000	12
13	4.08	Nicholas M. Roland	TLE	0.119	0.000	0.000	0.000	0.119	0.010	0.000	13
14	4.08	Alcus T. Thompson	TLE	0.103	0.000	0.000	0.000	0.103	0.019	0.000	14
15	4.08	Robert J. Johnsen	TLE	0.088	0.000	0.000	0.000	0.088	0.010	0.000	15
16	4.08	Jeffery P. Wolfe	TLE	0.110	0.000	0.000	0.000	0.110	0.010	0.000	16
17	4.09	Douglas Dexter	TLE	0.109	0.000	0.000	0.000	0.109	0.005	0.000	17
18	4.09	Reich Homes I, LLC	TLE	0.120	0.000	0.000	0.000	0.120	0.012	0.000	18
19	4.09	John M. Thurman	TLE	0.102	0.000	0.000	0.000	0.102	0.015	0.000	19
20	4.09	Richard P. Kaczor and Carrie A. Kaczor, husband and wife	TLE	0.213	0.000	0.000	0.000	0.213	0.016	0.000	20
21	4.09	Fremut's Holdings, LCC	TLE	0.064	0.000	0.000	0.000	0.064	0.014	0.000	21
22	4.09	ATD Rentals 65 LLC	TLE	0.088	0.000	0.000	0.000	0.088	0.018	0.000	22
23	4.09	ATD Rentals 65 LLC	TLE	0.250	0.000	0.000	0.000	0.250	0.010	0.000	23
24	N/A	INTENTIONALLY OMITTED	NONE	0.000	0.000	0.000	0.000	0.000	0.000	0.000	24
25	N/A	INTENTIONALLY OMITTED	NONE	0.000	0.000	0.000	0.000	0.000	0.000	0.000	25
26	4.10	MRK 6424 Properties LLC, a Wisconsin limited liability company	TLE	0.184	0.000	0.000	0.000	0.184	0.019	0.000	26
27	4.10	Gregory Prabucki	TLE	0.110	0.000	0.000	0.000	0.110	0.006	0.000	27
28	4.10	Paul A. Bettendorf and Suzanne L. Bettendorf, husband and wife	TLE	0.110	0.000	0.000	0.000	0.110	0.009	0.000	28
29	4.10	Francisco Guzman	TLE	0.110	0.000	0.000	0.000	0.110	0.009	0.000	29
30	4.10	Gilbert M. Murawski, a single person and Kim Antonovich, the remainder interest	TLE	0.110	0.000	0.000	0.000	0.110	0.009	0.000	30
31	4.10	Henry T. Potocki and Helena I. Potocki, husband and wife	TLE	0.110	0.000	0.000	0.000	0.110	0.009	0.000	31
32	4.10	Carla Lopez Cardoso and Sebastian Restrepo Diez	TLE	0.110	0.000	0.000	0.000	0.110	0.009	0.000	32
33	N/A	INTENTIONALLY OMITTED	NONE	0.000	0.000	0.000	0.000	0.000	0.000	0.000	33
34	4.10	Jakob Ahrens	TLE	0.114	0.000	0.000	0.000	0.114	0.012	0.000	34
35	4.10	Kevin Helinski and Sandra Helinski	TLE	0.104	0.000	0.000	0.000	0.104	0.009	0.000	35
36	4.10	Kevin Helinski	TLE	0.120	0.000	0.000	0.000	0.120	0.009	0.000	36
37	4.10	Maria G. Cervantes	TLE	0.128	0.000	0.000	0.000	0.128	0.016	0.000	37
38	4.10	Jeremy D. Brown and Raven A. Brown, husband and wife	TLE	0.093	0.000	0.000	0.000	0.093	0.009	0.000	38
39	4.10	Paul A. Grooms and Laurie Ann Grooms, husband and wife	TLE	0.109	0.000	0.000	0.000	0.109	0.009	0.000	39
40	4.10	Epic Investment Solutions, LLC	TLE	0.092	0.000	0.000	0.000	0.092	0.012	0.000	40
41	4.10	Robert M. Cooper, and his successors, Trustee of the Robert M. Cooper Trust	TLE	0.118	0.000	0.000	0.000	0.118	0.008	0.000	41
42	4.11	Yohannes M. Quiles and Chasity E. Quiles, husband and wife; and Charles T. Klusman	TLE	0.110	0.000	0.000	0.000	0.110	0.009	0.000	42
43	4.11	Chue Yee Yang and Mai Kee Vang	TLE	0.110	0.000	0.000	0.000	0.110	0.009	0.000	43

4

4

REVISION DATE	DATE 03/25/2021	SCALE, FEET	HWY: W. BELOIT ROAD	R/W PROJECT NUMBER 2525-03-01	PLAT SHEET 4.02
		0 N/A	COUNTY: MILWAUKEE	CONSTRUCTION PROJECT NUMBER 2525-03-71	PS&E SHEET

E

SCHEDULE OF LANDS & INTERESTS REQUIRED

OWNER'S NAMES ARE SHOWN FOR REFERENCE PURPOSES ONLY AND ARE SUBJECT TO CHANGE PRIOR TO THE TRANSFER OF LAND INTERESTS TO THE DEPARTMENT.

4

4

PARCEL NUMBER	SHEET NUMBER	OWNER	INTEREST REQUIRED	TOTAL ACRES	NEW	EXISTING	TOTAL	REMAINING ACRES	TEMP. ACRES	PERM. ACRES	PARCEL NUMBER
44	4.11	Teresa M. Sarnowski f/k/a Teresa M. Scepanski and the Estate of Mark Sarnowski	TLE	0.110	0.000	0.000	0.000	0.110	0.009	0.000	44
45	4.11	Esmeralda Nava James	TLE	0.110	0.000	0.000	0.000	0.110	0.009	0.000	45
46	4.11	Timoth L. Perleberg and Linda J. Perleberg	TLE	0.110	0.000	0.000	0.000	0.110	0.009	0.000	46
47	4.11	Kenneth D. Schinke and Lee Schinke, husband and wife	TLE	0.110	0.000	0.000	0.000	0.110	0.009	0.000	47
48	4.11	Brian Levan and Melissa Kenney	TLE	0.110	0.000	0.000	0.000	0.110	0.009	0.000	48
49	4.11	The Debra L. Lauritch Revocable Living Trust	TLE	0.110	0.000	0.000	0.000	0.110	0.009	0.000	49
50	4.11	James A. Klinger and Danielle M. Klinger, husband and wife	TLE	0.110	0.000	0.000	0.000	0.110	0.009	0.000	50
51	4.11	Axel O. Maldonado-Medina	TLE	0.168	0.000	0.000	0.000	0.168	0.021	0.000	51
52	4.11	Lori La Bre	TLE	0.139	0.000	0.000	0.000	0.139	0.008	0.000	52
53	4.11	Heidi Ruth Wehrhahn	TLE	0.061	0.000	0.000	0.000	0.061	0.007	0.000	53
54	4.11	Carol Simon	TLE	0.069	0.000	0.000	0.000	0.069	0.006	0.000	54
55	4.11	Richard A. Minar and Patricia L. Minar, husband and wife	TLE	0.082	0.000	0.000	0.000	0.082	0.006	0.000	55
56	4.11	Wayne M. Nadolske and Julie A. Nadolske, husband and wife	TLE	0.115	0.000	0.000	0.000	0.115	0.007	0.000	56
57	4.11	Jacob Pitzer	TLE	0.109	0.000	0.000	0.000	0.109	0.009	0.000	57
58	4.11	Anthony V. Budiac	TLE	0.106	0.000	0.000	0.000	0.106	0.007	0.000	58
59	4.11	Kellie A. Stefonich	TLE	0.126	0.000	0.000	0.000	0.126	0.007	0.000	59
60	4.11	Jose L. Arteaga and Maria C. Arteaga, Trustee of the Jose and Maria Arteaga Living Trust	TLE	0.106	0.000	0.000	0.000	0.106	0.026	0.000	60
61	4.12	Milwaukee and Madison Railway Company, Chicago and North Western Railway Company, Chicago and Northwestern Transportation Company and Union Pacific Railroad	TLE & PLE	VAST	0.000	0.000	0.000	VAST	0.038	0.043	61
62	4.12	Kimberly S. Stevenson	TLE	0.089	0.000	0.000	0.000	0.089	0.007	0.000	62
63	4.12	Accent Properties LLC	TLE	0.109	0.000	0.000	0.000	0.109	0.007	0.000	63
64	4.12	The Zeman Family Irrevocable Trust	TLE	0.116	0.000	0.000	0.000	0.116	0.011	0.000	64
65	4.12	Victory Property Group LLC, a Wisconsin limited liability company	TLE	0.115	0.000	0.000	0.000	0.115	0.014	0.000	65
66	4.12	Land contract between Peter G. Agnos and Eugena P. Agnos, husband and wife, and Jose M. Lopez, as Purchaser	TLE	0.576	0.000	0.000	0.000	0.576	0.037	0.000	66
67	4.13	6048 Beloit LLC	TLE	2.012	0.000	0.000	0.000	2.012	0.039	0.000	67
68	4.13	S.T. Evenignasiak LLC, a Wisconsin limited liability company	TLE	1.667	0.000	0.000	0.000	1.667	0.083	0.000	68
69	4.13	Fairview Real Estate LLC, a Wisconsin limited liability company	TLE	0.578	0.000	0.000	0.000	0.578	0.013	0.000	69
70	4.13	Rosmarie Dunham, and successors, as Trustee of the Rosemarie Dunham Revocable Trust of 1994	TLE	0.409	0.000	0.000	0.000	0.409	0.034	0.000	70
71	4.13	J & D Freedom, LLC, a Wisconsin Limited Liability Company	TLE	0.158	0.000	0.000	0.000	0.158	0.008	0.000	71
72	4.13	2017 S 60th, LLC, a Wisconsin Limited Liability Company	TLE	0.528	0.000	0.000	0.000	0.528	0.021	0.000	72
50	4.07, 4.08, 4.12, 4.13	AT&T Wisconsin	RELEASE OF RIGHTS	0.000	0.000	0.000	0.000	0.000	0.000	0.000	
51	4.07, 4.08, 4.13	WE Energies-Electric	RELEASE OF RIGHTS	0.000	0.000	0.000	0.000	0.000	0.000	0.000	
52	4.12, 4.13	WILTEL Communications, Inc., Sprint Communications Co. LP, Qwest Communications Co. LLC, US Sprint Communications Company	RELEASE OF RIGHTS	0.000	0.000	0.000	0.000	0.000	0.000	0.000	
53	4.08	City of West Allis	RELEASE OF RIGHTS	0.000	0.000	0.000	0.000	0.000	0.000	0.000	
54	4.12	Digi-Net, Inc. a Nevada Corporation	RELEASE OF RIGHTS	0.000	0.000	0.000	0.000	0.000	0.000	0.000	
TOTAL:				14.301	0.000	0.000	0.000	14.301	0.975	0.043	

REVISION DATE	DATE 03/25/2021	SCALE, FEET 0 N/A	HWY: W. BELOIT ROAD	R/W PROJECT NUMBER 2525-03-01	PLAT SHEET 4.03
			COUNTY: MILWAUKEE	CONSTRUCTION PROJECT NUMBER 2525-03-71	PS&E SHEET



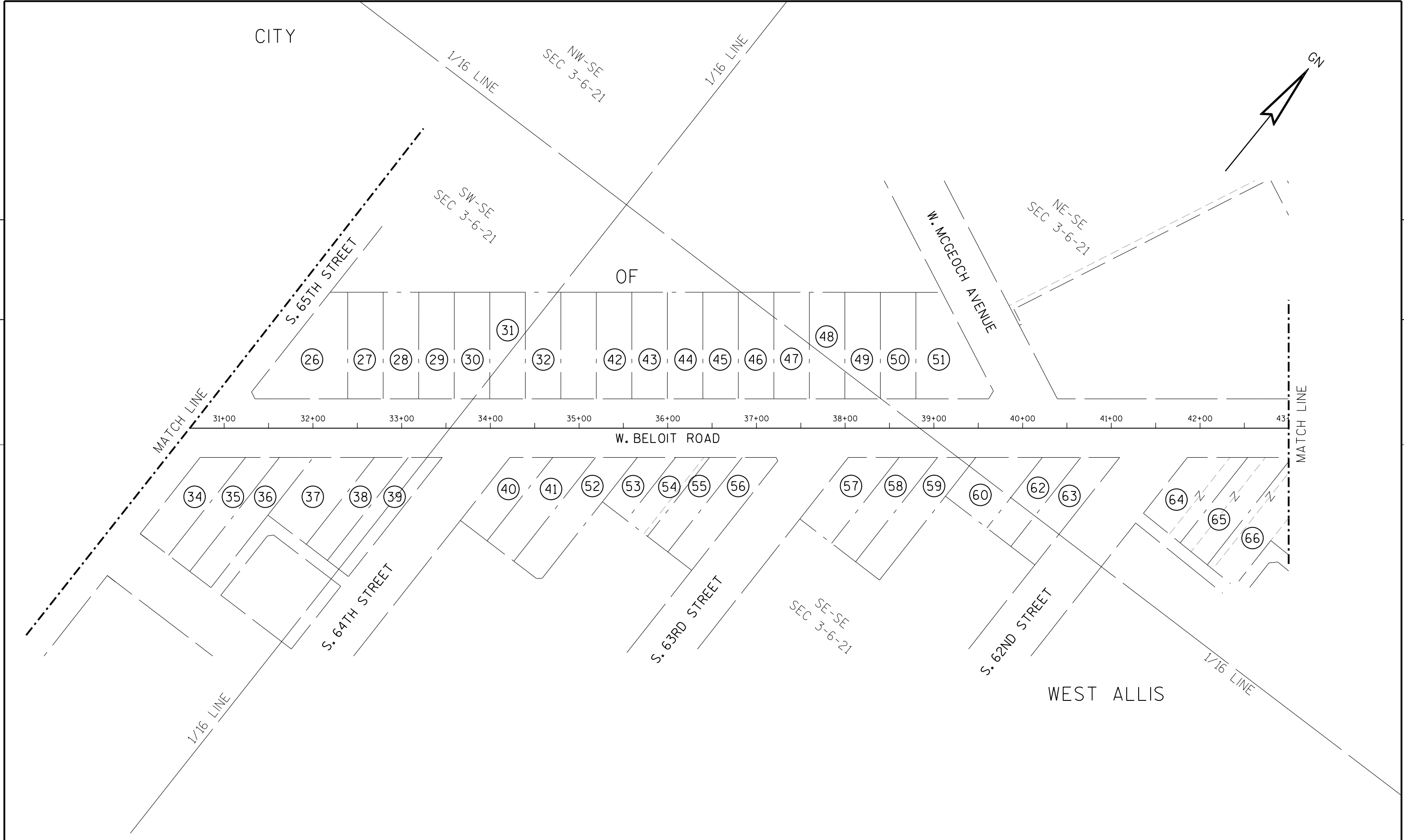
BEGIN RELOCATION ORDER

STA. 16+93.41
N=371,960.98
E=2,535,890.17

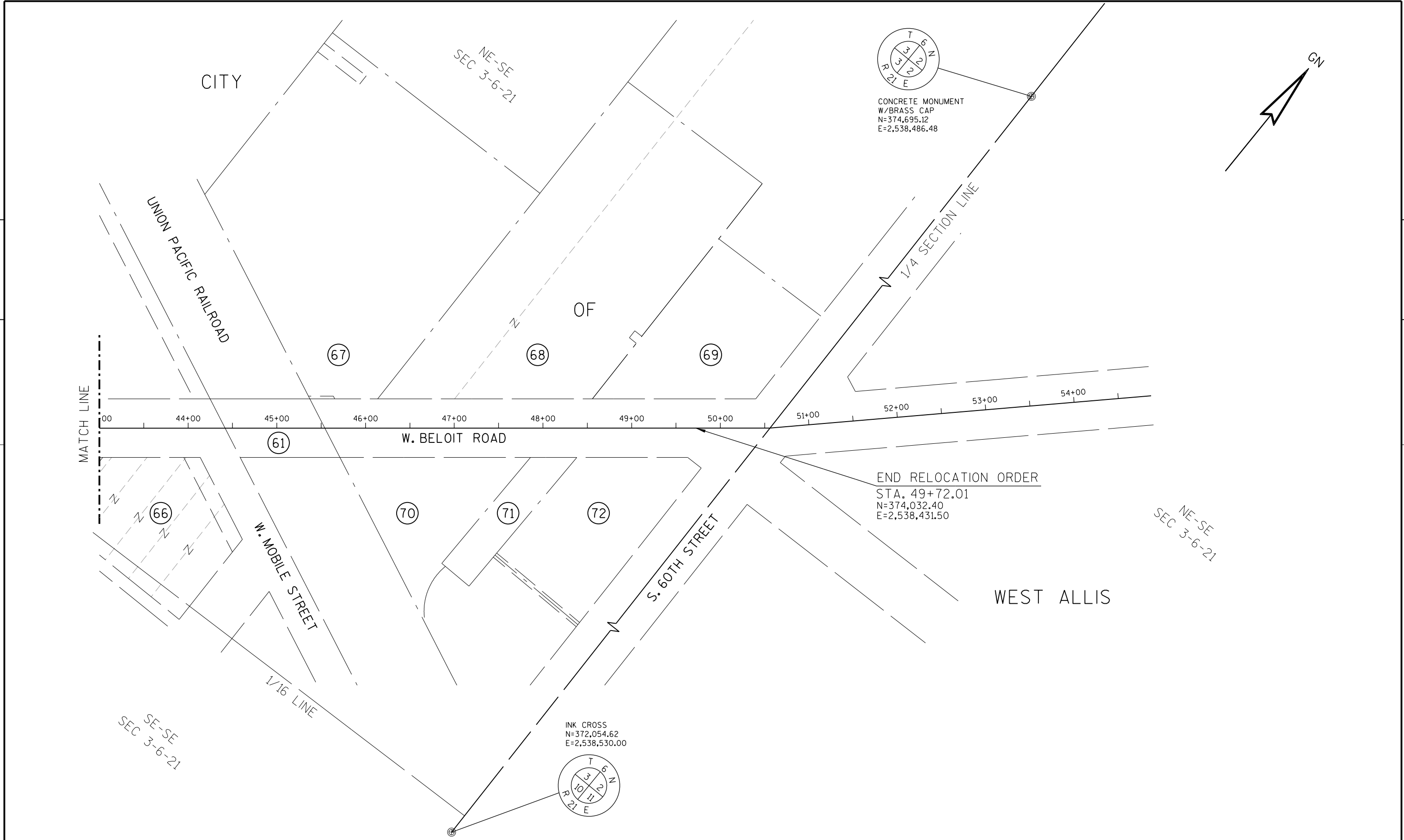
REVISION DATE	DATE 03/25/2021	SCALE, FEET 0 50 100	HWY: W. BELOIT ROAD	R/W PROJECT NUMBER 2525-03-01	PLAT SHEET 4.04
	GRID FACTOR 0.99992401		COUNTY: MILWAUKEE	CONSTRUCTION PROJECT NUMBER 2525-03-71	PS&E SHEET

4

4



REVISION DATE	DATE 03/25/2021	SCALE, FEET 0 50 100	HWY: W. BELOIT ROAD	R/W PROJECT NUMBER 2525-03-01	PLAT SHEET 4.05
	GRID FACTOR 0.99992401		COUNTY: MILWAUKEE	CONSTRUCTION PROJECT NUMBER 2525-03-71	PS&E SHEET

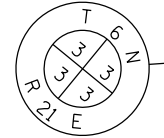


4

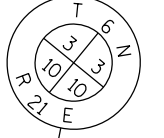
4

REVISION DATE	DATE 03/25/2021	SCALE, FEET 0 50 100	HWY: W. BELOIT ROAD	R/W PROJECT NUMBER 2525-03-01	PLAT SHEET 4.06
	GRID FACTOR 0.99992401		COUNTY: MILWAUKEE	CONSTRUCTION PROJECT NUMBER 2525-03-71	PS&E SHEET

CONCRETE MONUMENT
W/BRASS CAP
N=374,607.06
E=2,535,817.55

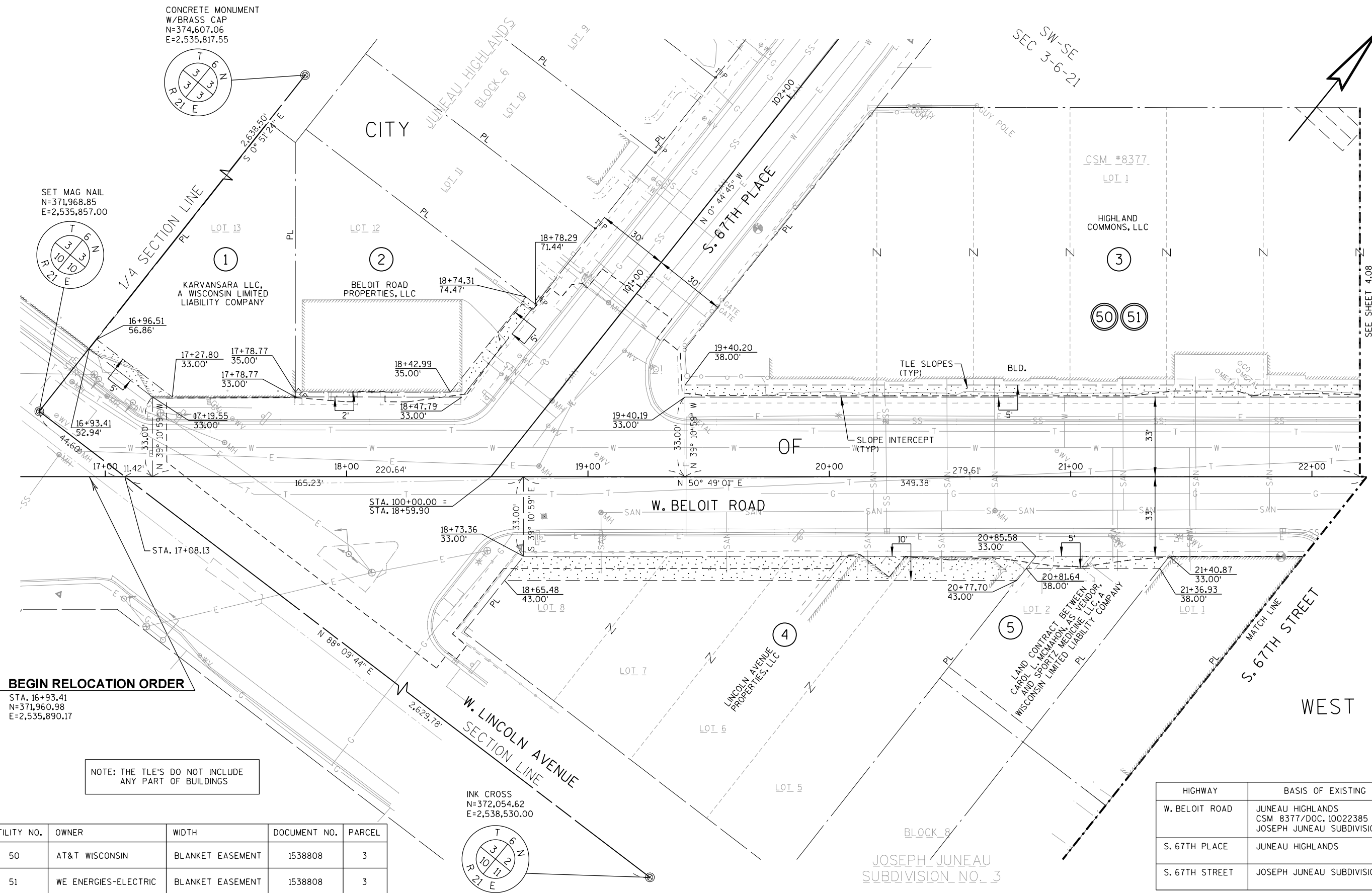
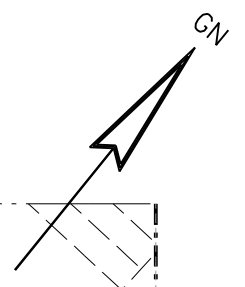


SET MAG NAIL
N=371,968.85
E=2,535,857.00



4

4

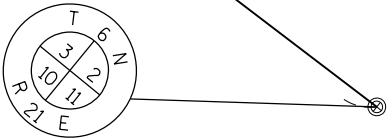


BEGIN RELOCATION ORDER

STA. 16+93.41
N=371,960.98
E=2,535,890.17

NOTE: THE TLE'S DO NOT INCLUDE ANY PART OF BUILDINGS

INK CROSS
N=372,054.62
E=2,538,530.00



UTILITY NO.	OWNER	WIDTH	DOCUMENT NO.	PARCEL
50	AT&T WISCONSIN	BLANKET EASEMENT	1538808	3
51	WE ENERGIES-ELECTRIC	BLANKET EASEMENT	1538808	3

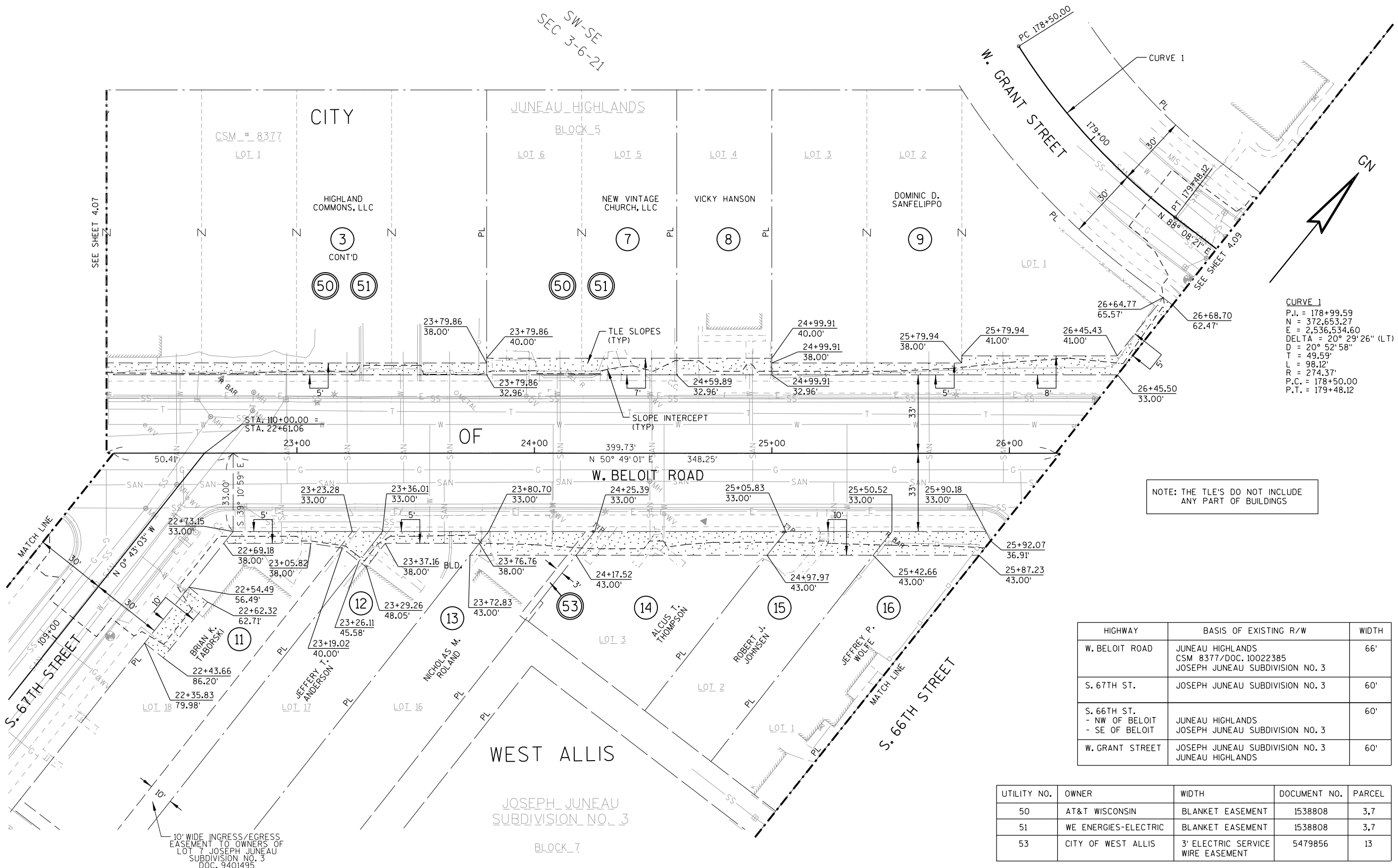
HIGHWAY	BASIS OF EXISTING R/W	WIDTH
W. BELOIT ROAD	JUNEAU HIGHLANDS CSM 8377/DOC. 10022385 JOSEPH JUNEAU SUBDIVISION NO. 3	66'
S. 67TH PLACE	JUNEAU HIGHLANDS	60'
S. 67TH STREET	JOSEPH JUNEAU SUBDIVISION NO. 3	60'

REVISION DATE	DATE: 03/25/2021	SCALE, FEET 0 20 40	HWY: W. BELOIT ROAD	R/W PROJECT NUMBER: 2525-03-01	PLAT SHEET 4.07
	GRID FACTOR 0.99992401		COUNTY: MILWAUKEE	CONSTRUCTION PROJECT NUMBER: 2525-03-71	PS&E SHEET

SW-SE
SEC 3-6-21

4

4



CURVE 1
 P.I. = 178+99.59
 N = 372,653.27
 E = 2,536,534.60
 DELTA = 20° 29' 26" (LT)
 D = 20° 52' 58"
 T = 49.59'
 L = 98.12'
 R = 274.37'
 P.C. = 178+50.00
 P.T. = 179+48.12

NOTE: THE TLE'S DO NOT INCLUDE ANY PART OF BUILDINGS

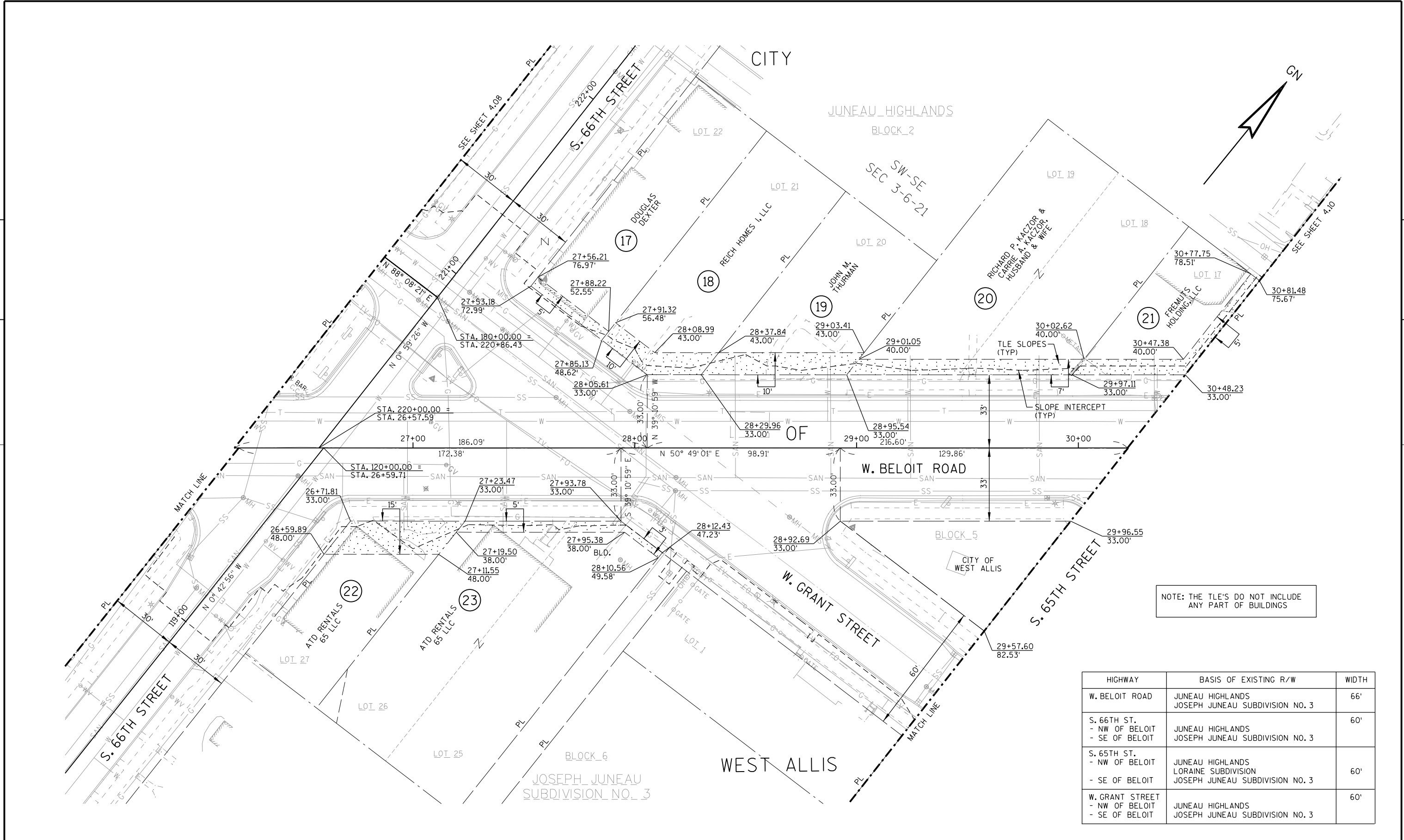
HIGHWAY	BASIS OF EXISTING R/W	WIDTH
W. BELOIT ROAD	JUNEAU HIGHLANDS CSM 8377/DOC. 10022385 JOSEPH JUNEAU SUBDIVISION NO. 3	66'
S. 67TH ST.	JOSEPH JUNEAU SUBDIVISION NO. 3	60'
S. 66TH ST. - NW OF BELOIT - SE OF BELOIT	JUNEAU HIGHLANDS JOSEPH JUNEAU SUBDIVISION NO. 3	60'
W. GRANT STREET	JOSEPH JUNEAU SUBDIVISION NO. 3 JUNEAU HIGHLANDS	60'

UTILITY NO.	OWNER	WIDTH	DOCUMENT NO.	PARCEL
50	AT&T WISCONSIN	BLANKET EASEMENT	1538808	3,7
51	WE ENERGIES-ELECTRIC	BLANKET EASEMENT	1538808	3,7
53	CITY OF WEST ALLIS	3' ELECTRIC SERVICE WIRE EASEMENT	5479856	13

REVISION DATE	DATE: 03/25/2021	SCALE, FEET 0 20 40	HWY: W. BELOIT ROAD	R/W PROJECT NUMBER: 2525-03-01	PLAT SHEET 4.08
	GRID FACTOR 0.99992401		COUNTY: MILWAUKEE	CONSTRUCTION PROJECT NUMBER: 2525-03-71	PS&E SHEET

4

4



NOTE: THE TLE'S DO NOT INCLUDE ANY PART OF BUILDINGS

HIGHWAY	BASIS OF EXISTING R/W	WIDTH
W. BELOIT ROAD	JUNEAU HIGHLANDS JOSEPH JUNEAU SUBDIVISION NO. 3	66'
S. 66TH ST. - NW OF BELOIT - SE OF BELOIT	JUNEAU HIGHLANDS JOSEPH JUNEAU SUBDIVISION NO. 3	60'
S. 65TH ST. - NW OF BELOIT - SE OF BELOIT	JUNEAU HIGHLANDS LORRAINE SUBDIVISION JOSEPH JUNEAU SUBDIVISION NO. 3	60'
W. GRANT STREET - NW OF BELOIT - SE OF BELOIT	JUNEAU HIGHLANDS JOSEPH JUNEAU SUBDIVISION NO. 3	60'

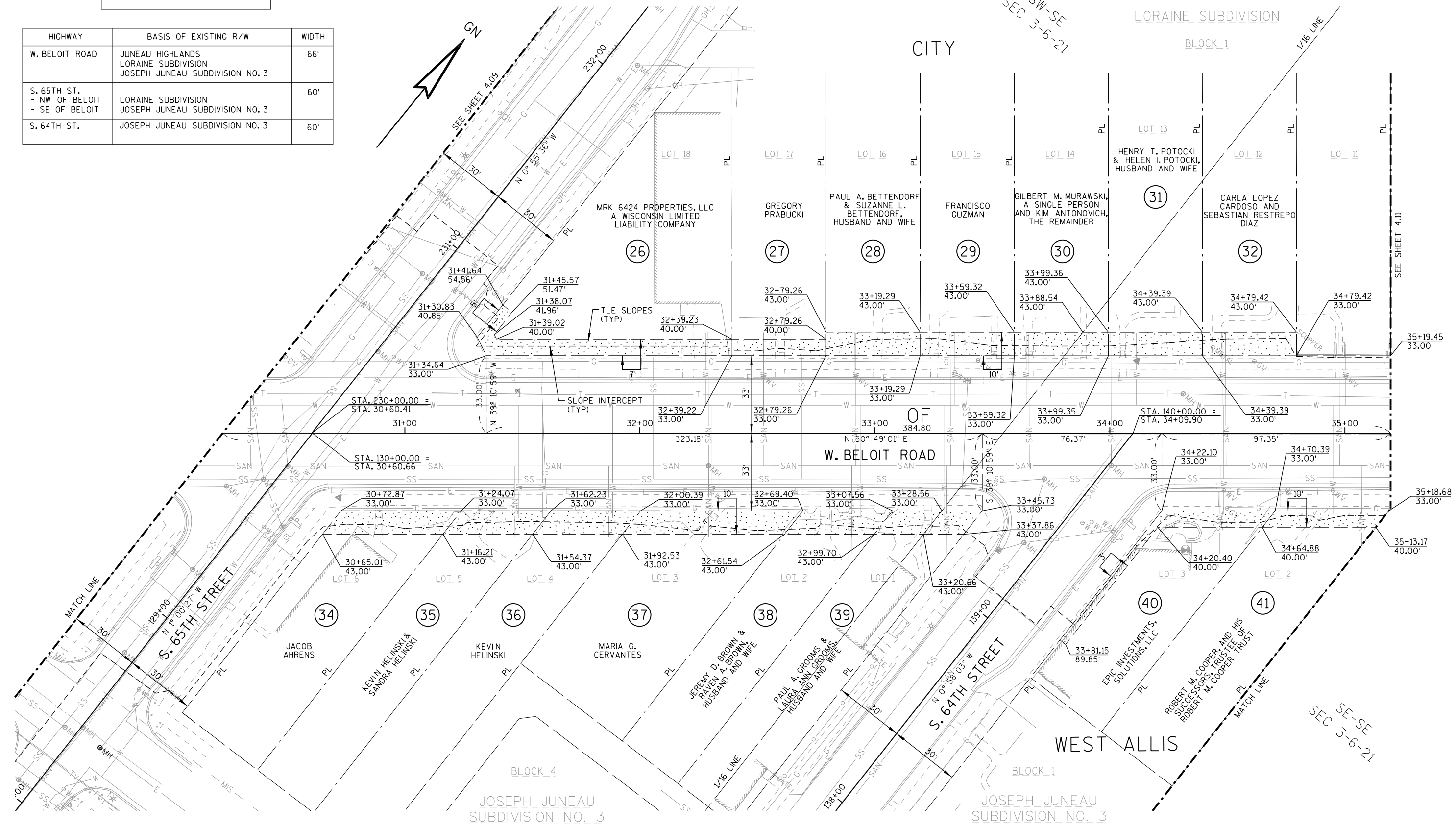
REVISION DATE	DATE: 03/25/2021	SCALE, FEET 0 20 40	HWY: W. BELOIT ROAD	R/W PROJECT NUMBER: 2525-03-01	PLAT SHEET 4.09
	GRID FACTOR 0.99992401		COUNTY: MILWAUKEE	CONSTRUCTION PROJECT NUMBER: 2525-03-71	PS&E SHEET

NOTE: THE TLE'S DO NOT INCLUDE ANY PART OF BUILDINGS

HIGHWAY	BASIS OF EXISTING R/W	WIDTH
W. BELOIT ROAD	JUNEAU HIGHLANDS LORAIN SUBDIVISION JOSEPH JUNEAU SUBDIVISION NO. 3	66'
S. 65TH ST. - NW OF BELOIT - SE OF BELOIT	LORAIN SUBDIVISION JOSEPH JUNEAU SUBDIVISION NO. 3	60'
S. 64TH ST.	JOSEPH JUNEAU SUBDIVISION NO. 3	60'

4

4



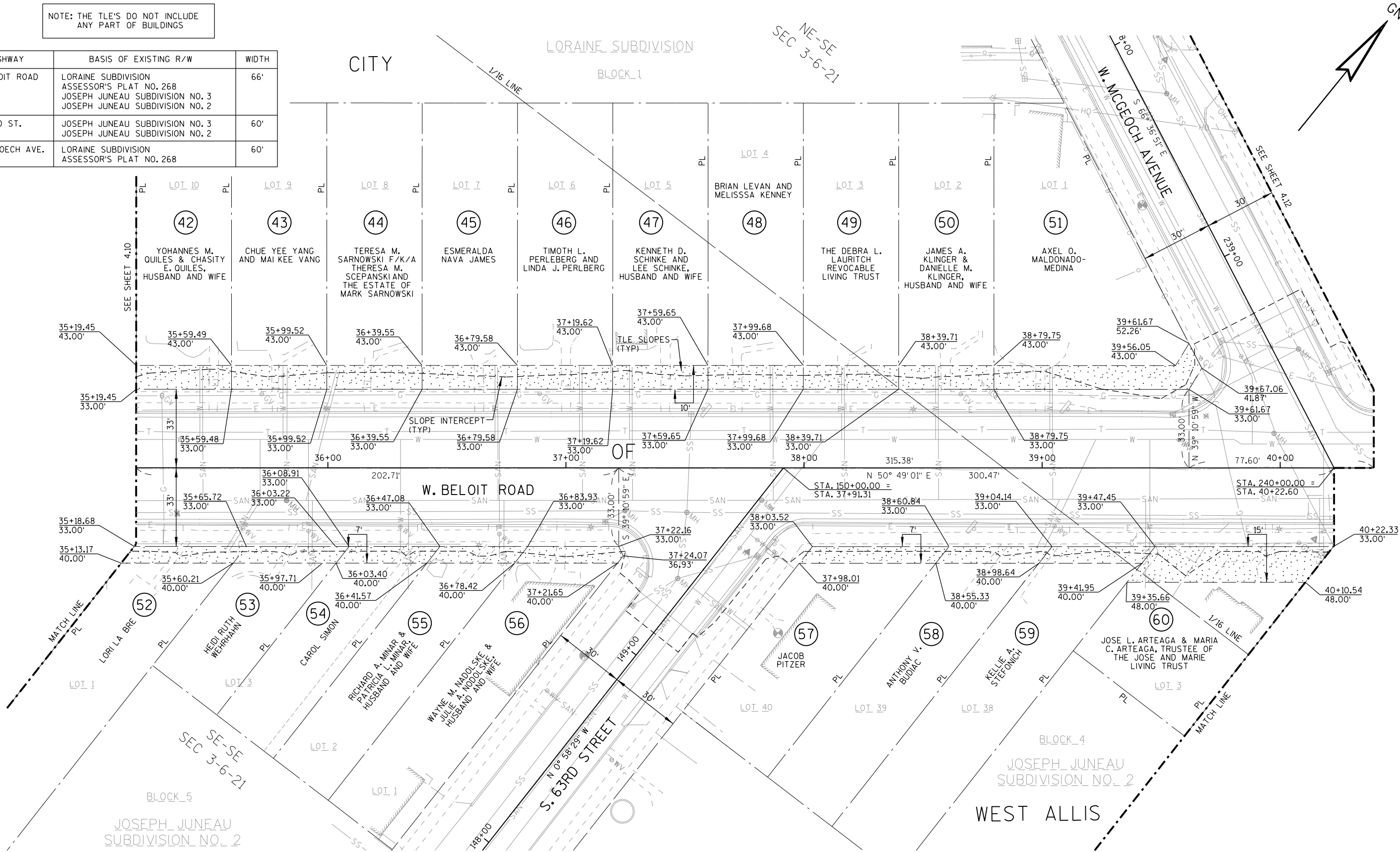
REVISION DATE	DATE: 03/25/2021	SCALE, FEET 0 20 40	HWY: W. BELOIT ROAD	R/W PROJECT NUMBER: 2525-03-01	PLAT SHEET 4.10
	GRID FACTOR 0.99992401		COUNTY: MILWAUKEE	CONSTRUCTION PROJECT NUMBER: 2525-03-71	PS&E SHEET

NOTE: THE TLE'S DO NOT INCLUDE ANY PART OF BUILDINGS

HIGHWAY	BASIS OF EXISTING R/W	WIDTH
W. BELOIT ROAD	LORAIN SUBDIVISION ASSESSOR'S PLAT NO. 268 JOSEPH JUNEAU SUBDIVISION NO. 3 JOSEPH JUNEAU SUBDIVISION NO. 2	66'
S. 63RD ST.	JOSEPH JUNEAU SUBDIVISION NO. 3 JOSEPH JUNEAU SUBDIVISION NO. 2	60'
W. MCGOECH AVE.	LORAIN SUBDIVISION ASSESSOR'S PLAT NO. 268	60'

4

4

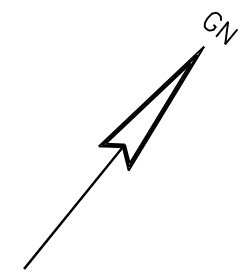


REVISION DATE	DATE: 03/25/2021	SCALE, FEET 0 20 40	HWY: W. BELOIT ROAD	R/W PROJECT NUMBER: 2525-03-01	PLAT SHEET 4.11
	GRID FACTOR 0.99992401		COUNTY: MILWAUKEE	CONSTRUCTION PROJECT NUMBER: 2525-03-71	PS&E SHEET

NOTE: THE TLE'S DO NOT INCLUDE ANY PART OF BUILDINGS

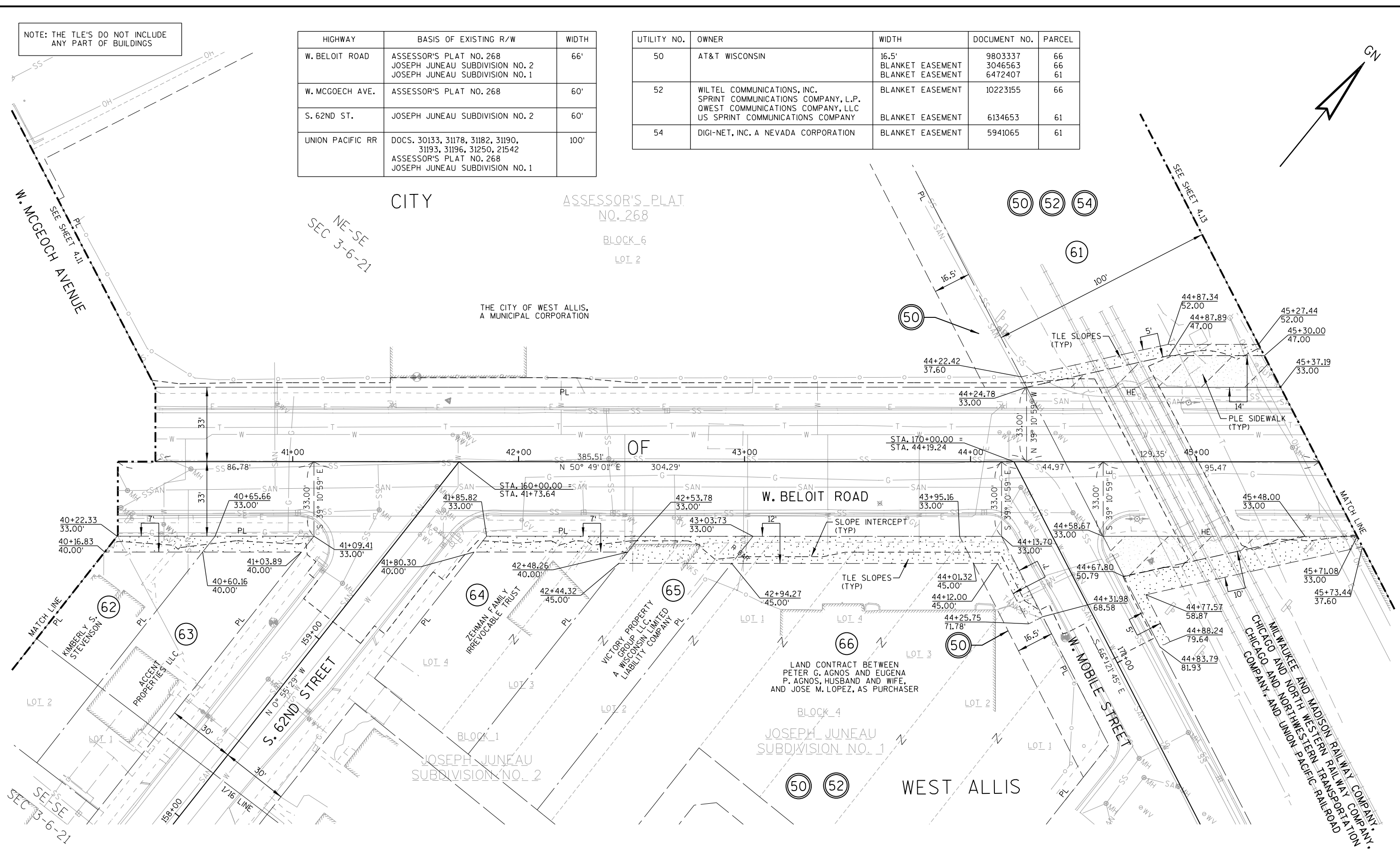
HIGHWAY	BASIS OF EXISTING R/W	WIDTH
W. BELOIT ROAD	ASSESSOR'S PLAT NO. 268 JOSEPH JUNEAU SUBDIVISION NO. 2 JOSEPH JUNEAU SUBDIVISION NO. 1	66'
W. MCGOECH AVE.	ASSESSOR'S PLAT NO. 268	60'
S. 62ND ST.	JOSEPH JUNEAU SUBDIVISION NO. 2	60'
UNION PACIFIC RR	DOCS. 30133, 31178, 31182, 31190, 31193, 31196, 31250, 21542 ASSESSOR'S PLAT NO. 268 JOSEPH JUNEAU SUBDIVISION NO. 1	100'

UTILITY NO.	OWNER	WIDTH	DOCUMENT NO.	PARCEL
50	AT&T WISCONSIN	16.5' BLANKET EASEMENT BLANKET EASEMENT	9803337 3046563 6472407	66 66 61
52	WILTEL COMMUNICATIONS, INC. SPRINT COMMUNICATIONS COMPANY, L.P. QWEST COMMUNICATIONS COMPANY, LLC US SPRINT COMMUNICATIONS COMPANY	BLANKET EASEMENT	10223155	66
54	DIGI-NET, INC. A NEVADA CORPORATION	BLANKET EASEMENT	5941065	61



4

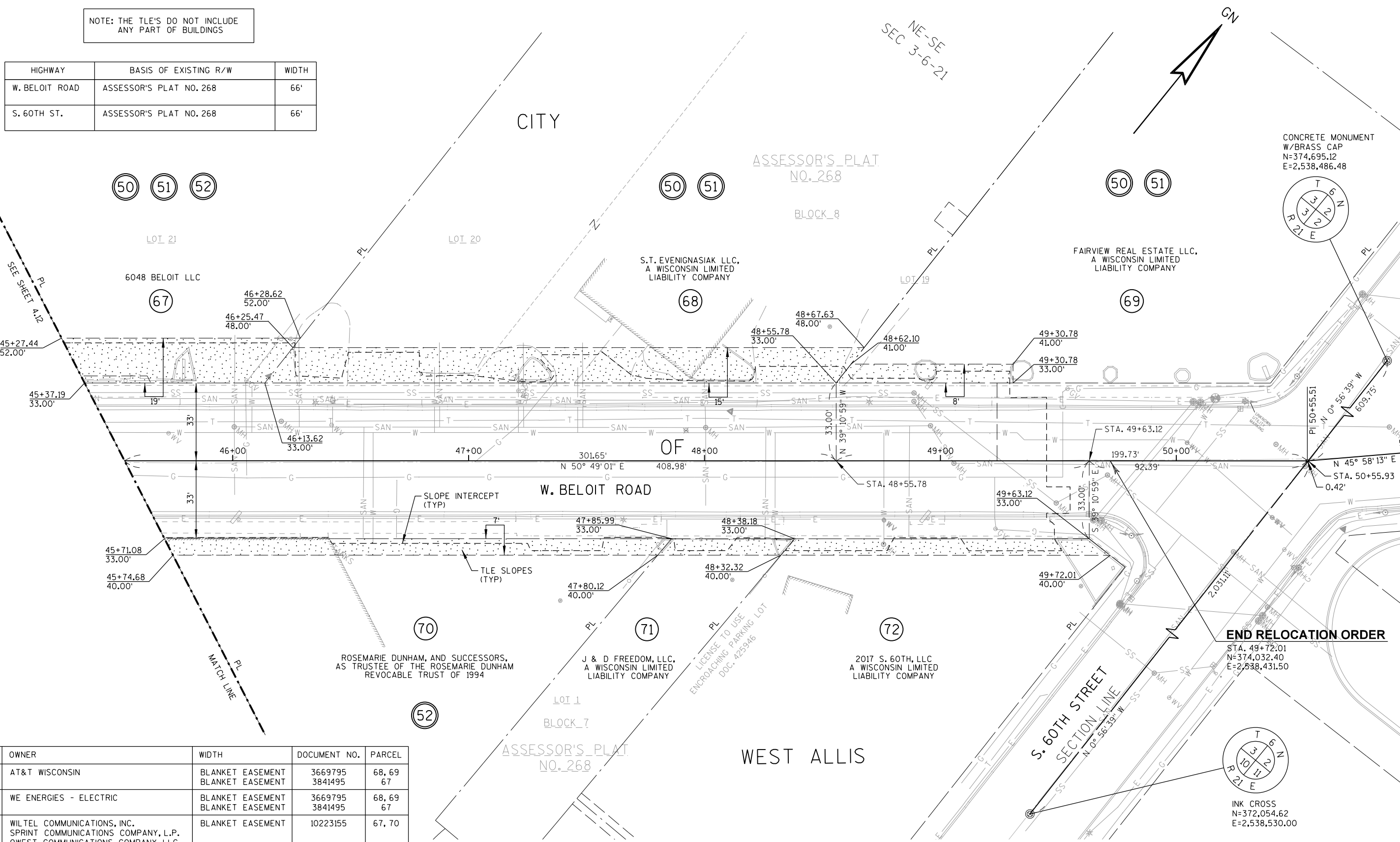
4



REVISION DATE	DATE: 03/25/2021	SCALE, FEET 0 20 40	HWY: W. BELOIT ROAD	R/W PROJECT NUMBER: 2525-03-01	PLAT SHEET 4.12
	GRID FACTOR 0.99992401		COUNTY: MILWAUKEE	CONSTRUCTION PROJECT NUMBER: 2525-03-71	PS&E SHEET

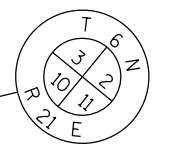
NOTE: THE TLE'S DO NOT INCLUDE ANY PART OF BUILDINGS

HIGHWAY	BASIS OF EXISTING R/W	WIDTH
W. BELOIT ROAD	ASSESSOR'S PLAT NO. 268	66'
S. 60TH ST.	ASSESSOR'S PLAT NO. 268	66'



END RELOCATION ORDER

STA. 49+72.01
N=374,032.40
E=2,538,431.50



INK CROSS
N=372,054.62
E=2,538,530.00

UTILITY NO.	OWNER	WIDTH	DOCUMENT NO.	PARCEL
50	AT&T WISCONSIN	BLANKET EASEMENT BLANKET EASEMENT	3669795 3841495	68, 69 67
51	WE ENERGIES - ELECTRIC	BLANKET EASEMENT BLANKET EASEMENT	3669795 3841495	68, 69 67
52	WILTEL COMMUNICATIONS, INC. SPRINT COMMUNICATIONS COMPANY, L.P. QWEST COMMUNICATIONS COMPANY, LLC	BLANKET EASEMENT	10223155	67, 70

REVISION DATE	DATE: 03/25/2021	SCALE, FEET 0 20 40	HWY: W. BELOIT ROAD	R/W PROJECT NUMBER: 2525-03-01	PLAT SHEET 4.13
	GRID FACTOR 0.99992401		COUNTY: MILWAUKEE	CONSTRUCTION PROJECT NUMBER: 2525-03-71	PS&E SHEET E