



Sourcewell

Awarded Contract

Contract # 032824-ATC

## Autocar Sourcewell Quote

Customer Name: City of West Allis  
Quote #: Q0052187

Part #: ACX64  
Model: ACX  
Base Chassis Type: Diesel  
Engine: L9 - 360 HP  
Transmission: 4500  
Front Axle: 20,000 lbs  
Rear Axle: 46,000 lbs  
Tag Axle: 0,000 lbs

MSRP:	\$	275,441.25
Sourcewell Member Discount:	20%	\$ (55,088.25)
Freight	\$	2,550.00
PDI	\$	750.00

Locally sourced options:

Total	\$	223,653.00
Quantity	1	
Total	\$	223,653.00

*Christian Spain*

**Christian Spain**

**Autocar Trucks**

Sales Operations Manager

4680 Pinson Valley Parkway

Birmingham, AL 35215

Direct: 205.858.0173

Main: 765.489.5499

## ***ACX64 Class 8 Model Year 2026***

Truck Country - De Forest  
5000 Cake Drive  
DeForest, WI 53532

Prepared By : Tyler Dittmer  
tylerdittmer@truckcountry.com

Prepared For : BRETT WOLLENZEIN  
CITY OF WEST ALLIS

Friday, June 20, 2025 9:49:02 AM EST

Chassis Specification

06/20/2025

			Description	Front Weight	Rear Weight
AUTOCAR TRUCKS					
O	ENG0001	ENGINEERING GROUP IDENTIFIER	AUTOCAR ENGINEERING		
S	0040002	MODELS	ACX64		
O	5000004	CAB SHELL	DUAL DRIVE LH SIT AND RH STAND		
O	100U200	CUSTOMER TYPE	NJPA/SOURCEWELL		
VEHICLE ADAPTATION					
S	114010	COUNTRY OF USE	UNITED STATES STD MARKET ADAPTATION		
O	C03500	TERRITORY	EPA		
SOLUTION					
O	C04003	BODY COMPANY	McNEILUS		
O	C02003	BODY TYPE	REAR END LOADER		
S	C070001	FUEL SYSTEM TYPE	DIESEL		
O	C06315	BODY STYLE	MCNEILUS HEAVY DUTY		
O	C05020	TOTAL BODY CAPACITY - BODY/HOPPER	20 YARD		
S	C090003	AXLE QUANTITY	3 AXLE		
O	C080002	REAR SUSPENSION TYPE	AIR RIDE REAR SUSPENSION		
O	C01003	APPLICATION	REFUSE - LANDFILL		
O	D010200	FRONT GAWR	20000 LBS		
O	D020460	REAR GAWR	46000 LBS		
O	D100660	GVWR	66000 LBS		
ENGINE					
S	1012102	ENGINE ASSY	L9, 360HP / 2200RPM / 1150 LB-FT, CUMMINS		
O	972A1000	SPECIAL EMISSION CERTIFICATION LABELS	EPA CLEAN IDLE LABEL (DIESEL)		
S	9722025	CERTIFICATION-EMISSIONS	MY2025 ENGINE		
S	972B001	CARB OPT-IN STATES	NO PENALTY		
S	4460001	FUEL TYPE	ULTRA-LOW SULPHUR DIESEL FUEL REQUIRED		
ENGINE EQUIP					
S	128071	ENGINE CONTROL SPECIFICATIONS	DEFAULT SPECS		
S	1290004	ENGINE ELECTRONICS	CUMMINS 500K COMMUNICATION		
O	4382006	FILTER-FUEL, CHASSIS MOUNTED	FLEETGUARD FS20121 F/W SEPARATOR W/HEATER AND PROBE AND DASH LIGHT		

S	1700001	<b>FILTER-FUEL, ENGINE MOUNTED</b>	SECONDARY SPIN-ON FILTER, REMOTE MTD.
S	2080001	<b>FAN &amp; DRIVE-ENGINE</b>	2-SPEED FAN
S	2120003	<b>RADIATOR SURGE TANK</b>	STANDARD SURGE TANK W/ SIGHT GLASS
O	2200002	<b>AIR CLEANER</b>	15" ONE STAGE EPG CLEANER W/SAFETY ELEMENT DONALDSON
S	226001	<b>AIR INTAKE RAIN CAP</b>	BLACK, HOOD TYPE
O	2302001	<b>MUFFLER SYSTEM</b>	LH VERT HORIZ DPF/SCR
S	2310003	<b>EXHAUST SHIELDS</b>	DPF & SCR SHIELDS
S	2322001	<b>EXHAUST STACKS</b>	90 DEGREE SIDE OUT DIFFUSER
S	115A200	<b>TURBO HEAT SHIELD</b>	TURBO HEAT SHIELD
S	2390002	<b>UREA DELIVERY SYSTEM</b>	OVER-FENDER MTD., LH SIDE, 10 GAL. CAPACITY
S	5300001	<b>ENGINE/EXHAUST COVER</b>	ALUM TURBO/EXHAUST PIPE DEBRIS SHIELD
S	700026	<b>AIR COMPRESSOR</b>	CUMMINS WABCO 18.7 CFM COMPRESSOR
S	8200003	<b>STARTING MOTOR</b>	DELCO REMY 12V 39 MT W/OCF
S	8020004	<b>ALTERNATOR</b>	DELCO REMY 36SI 12V 160 AMP
O	P020002	<b>ENGINE IDLE SHUT DOWN</b>	ENGINE IDLE SHUT DOWN DISABLED
S	P030001	<b>CRUISE CONTROL PARAMETER</b>	CRUISE CONTROL ENABLED
O	P520002	<b>IDLE SHUTDOWN IN PTO MODE</b>	IDLE SHUTDOWN IN PTO MODE = DISABLED
S	P630006	<b>MAX VEHICLE SPEED - PTO MODE</b>	MAX VEHICLE SPEED IN PTO MODE = 6 MPH
S	P641200	<b>RPM PTO MODE</b>	1200 RPM MAX IN PTO
S	P701200	<b>PTO SET SWITCH</b>	PTO SET SWITCH = 1200 RPM
S	P711000	<b>PTO RESUME SWITCH</b>	PTO RESUME SWITCH = 1000 RPM
S	204B001	<b>COOLANT HOSE HEAT SLEEVE</b>	STANDARD HEAT SLEEVE
O	P010064	<b>VEHICLE GOVERNED SPEED LIMIT</b>	SPEED LIMIT 64 MPH (LIMITED BY PROP SHAFT CALCS)

## TRANSMISSION

S	2580003	<b>VOCATION</b>	RDS REFUSE - VOC 400-XXX
O	2690011	<b>CONTROL MODULE (ELECT)</b>	REFUSE W/ AUTO-NEUTRAL & SERVICE BRAKE VP168 - THIRD GEAR LIMIT RHS
S	26A0001	<b>TRANSMISSION SHIFT SCHEDULE / FUEL SENSE</b>	PRIMARY PERFORMANCE / SECONDARY ECONOMY
S	26B0001	<b>NEUTRAL IDLE</b>	NEUTRAL IDLE ENABLED

<b>S</b>	PT10001	<b>TRANS DIRECTION CHANGE SHIFT INHIBIT</b>	SHIFT INHIBIT ENABLED
<b>S</b>	27P0000	<b>TRANSMISSION RETARDER AUDIBLE ALARM</b>	NO TRANSMISSION RETARDER AUDIBLE ALARM
<b>O</b>	2700028	<b>TRANSMISSION</b>	ALLISON 4500 SERIES,6- SPEED
<b>S</b>	287A200	<b>TRANSMISSION BREATHER</b>	TRANSMISSION REMOTE BREATHER
<b>S</b>	284016	<b>TRANSMISSION CONTROLS</b>	ALLISON PUSHBUTTON CONTROLS
<b>S</b>	286005	<b>COOLER-TRANSMISSION OIL</b>	OIL TO WATER TYPE
<b>S</b>	290003	<b>TRANSMISSION OIL FILL/CHECK</b>	OIL FILL TUBE / DIPSTICK W/ LEVEL SENSOR
<b>O</b>	300013	<b>DRIVESHAFT-MAIN</b>	SPICER 1810HD HALF ROUND
<b>O</b>	3170007	<b>PTO-TRANSMISSION MOUNTED</b>	CHELSEA 890 / 897 PTO CLEARANCE (PREP ONLY)

## FRONT AXLE

<b>O</b>	3702003	<b>FRONT AXLE</b>	MERITOR MFS-20 DEEP 5" DROP STEER AXLE, 20800 # RATING
<b>S</b>	3690005	<b>FRONT AXLE POSITION</b>	52.5 INCHES
<b>O</b>	3710003	<b>FRONT SUSPENSION</b>	10200 LB TAPER LEAF REDUCED RIDE HEIGHT, 22000 LB GROUND CAPACITY
<b>O</b>	371T01	<b>SUSPENSION, FRONT AUX</b>	AUX LOAD CUSHION
<b>S</b>	373002	<b>SHOCK ABSORBERS- FRONT</b>	DOUBLE ACTING SINGLE - HEAVY DUTY
<b>O</b>	9042002	<b>HUBS-FRONT</b>	FL PRESET PLUS STEEL HUB, 285MM BC
<b>O</b>	9402006	<b>WHEEL OIL SEALS-FRONT</b>	CONMET SEALS & PRESET PLUS SPINDLE NUT
<b>S</b>	9210001	<b>HUB CAPS - FRONT AXLE</b>	CR ZYTEL HUBCAP
<b>S</b>	374002	<b>FRONT AXLE LUBRICANT</b>	SYNTHETIC,DANA SPICER EP75W90,OR EQUIV
<b>S</b>	7510003	<b>BRAKES-FOUNDATION, FRONT AXLE</b>	MERITOR 16.5X6 QP
<b>S</b>	754009	<b>BRAKE SLACK ADJUSTERS -FRONT AXLE</b>	MERITOR AUTOMATIC
<b>O</b>	755998	<b>DUST SHIELDS - FRT BRAKES</b>	NO FRONT BRAKE DUST SHIELDS PROVIDED
<b>S</b>	901001	<b>BRAKE DRUM-FRONT</b>	CAST IRON
<b>S</b>	383101	<b>STEERING GEAR</b>	INTEGRAL POWER STEERING W/RIGHT HAND RAM
<b>S</b>	387003	<b>POWER STEERING RESERVOIR</b>	FOUR QUART REMOTE MOUNTED

## REAR AXLE

O	330444	<b>REAR DRIVE AXLE-SINGLE &amp; TANDEM</b>	MERITOR RT46-160 46,000 LB
S	330U98	<b>REAR AXLE LUBE PUMP</b>	NO LUBRICATION PUMP
O	331563	<b>REAR DRIVE AXLE RATIO</b>	5.63
O	3500014	<b>REAR SUSPENSION</b>	HENDRICKSON PAX-EX-462, AIR RIDE @ 54", 46,000 LB CAP
O	357001	<b>REAR SUSPENSION AIR CONTROL</b>	DASH MOUNTED DUMP VALVE
S	358005	<b>TORQUE RODS</b>	LONGITUDINAL & TRANSVERSE - RUBBER BUSHED
O	359006	<b>SHOCK ABSORBERS-REAR</b>	FOR AIR SUSPENSION
O	9132002	<b>HUBS-REAR</b>	R PRESET PLUS STEEL HUB, 285MM BC
S	3400001	<b>REAR AXLE BREATHER</b>	STANDARD AXLE BREATHER
O	9412007	<b>WHEEL OIL SEALS-REAR</b>	CONMET SEALS & PRESET PLUS SPINDLE NUT
S	7610003	<b>BRAKES-FOUNDATION, REAR AXLE</b>	MERITOR 16.5X7 Q PLUS
S	764013	<b>BRAKE SLACK ADJUSTERS -REAR AXLE</b>	MERITOR AUTOMATIC,TANDEM AXLE
S	765001	<b>DUST SHIELDS - REAR BRAKES</b>	DUST SHIELDS - REAR BRAKES
S	781012	<b>BRAKE CHAMBERS- PARKING, TYPE/VENDOR</b>	CAM TYPE MGM STOPGARD (4)
S	910001	<b>BRAKE DRUM-REAR</b>	CAST IRON

## BRAKES

S	729002	<b>AIR LINES-PARKING BRAKE, CHASSIS</b>	AIR LINES CHASSIS PARK BRAKE
S	7412006	<b>BRAKE CONTROL SYSTEM</b>	WABCO ABS 6S6M W/PLC AND ATC MOUNTED IN CAB
O	7660001	<b>BRAKE VALVE-HAND CONTROL</b>	WORK BRAKE; LEVER ACTIV. TO ALL SERVICE BRAKES

## CHASSIS

O	400153	<b>WHEELBASE</b>	153 INCHES
S	402104	<b>FRAME-REAR OVERHANG</b>	104"
S	403012	<b>FRAME RAILS</b>	3/8" VARIABLE DROP STEEL, EXT B
S	406001	<b>FRAME-REAR CUT-OFF</b>	STRAIGHT
X	4070005	<b>FRAME-FRONT EXTENSION</b>	XXXX ACX HEAVY DUTY FRONT END
S	409002	<b>FRAME CROSSMEMBER- CENTER</b>	ALUMINUM ORIENTATION B
S	4110002	<b>FRAME CROSSMEMBER- END CLOSING</b>	ALUMINUM MEMBER-IF REQUIRED
S	460001	<b>BUMPER-FRONT</b>	STEEL PAINTED

<b>O</b>	4682000	<b>GUARD-OIL PAN</b>	ENGINE OIL PAN GUARD - STEEL
<b>S</b>	480002	<b>TOWING DEVICE-FRONT</b>	TWO REMOVABLE TOW PINS
<b>S</b>	8742000	<b>WIRING, BODY INTERFACE</b>	RP 170 COMPLIANT
<b>O</b>	430998	<b>FUEL TANK-LEFT</b>	DELETE LHS FUEL TANK
<b>O</b>	431020	<b>FUEL TANK-RIGHT</b>	75 GAL 26" DIA UNPAINTED ALUMINUM
<b>O</b>	441001	<b>FUEL TANK STRAP/ SUPPORT RIGHT</b>	PAINTED STEEL, RH
<b>O</b>	4480003	<b>RH FUEL TANK SPACERS</b>	RH FUEL TANK SPACED 2", DROPPED 2"
<b>O</b>	4290001	<b>DRILLING FUEL TK SUPT- RIGHT</b>	FUEL TANK MTD FWD RHS - STANDARD (IF PROVIDED)
<b>S</b>	436015	<b>FUEL LINES</b>	SAE J1402A1 WIRE BRAIDED
<b>S</b>	8120007	<b>BATTERY BOX</b>	STEEL BOX W/ ALUM LID, 3 BATTERY, LHS
<b>O</b>	8160005	<b>BATTERY BOX SPACERS</b>	BATTERY BOX SPACED 2", DROPPED 6"
<b>S</b>	8090001	<b>BATTERY BOX DRILLING</b>	BOX LOCATED AS FAR FORWARD AS POSSIBLE
<b>O</b>	810092	<b>BATTERY</b>	3 JOHNSON CONTROL 31ECL 12V 2850CCA
<b>S</b>	811002	<b>BATTERY CABLES</b>	STANDARD
<b>O</b>	8142000	<b>BATTERY SHUT-OFF SWITCH</b>	SHUTOFF W/LOCKOUT IN OFF ONLY & EMERGENCY JUMPER STUDS
<b>O</b>	7110002	<b>AIR TANK-BRAKE</b>	ALUMINUM AIR TANKS
<b>O</b>	7090001	<b>AIR TANK DRILLING</b>	AS MANY TANKS IN RAIL AS POSSIBLE
<b>O</b>	7380001	<b>EMERGENCY AIR SYSTEM CHARGING</b>	SCHRADER VALVE, WET TANK MTD
<b>O</b>	7152001	<b>WET TANK DRAIN</b>	WABCO DV-2 AUTOMATIC W/ HEATER
<b>S</b>	715T003	<b>AIR RESERVOIR DRAIN SYSTEM</b>	CENTRAL MANIFOLD W/ PETCOCKS
<b>S</b>	7130001	<b>AIR DRYER</b>	WABCO 1800P W/HEAT
<b>S</b>	7100003	<b>AIR DRYER DRILLING</b>	AIR DRYER MOUNTED OUTSIDE RAIL, LHS
<b>S</b>	724001	<b>AIR LINES-CAB</b>	SAE J844 NYLON TUBING

### **CAB EXTERIOR**

---

<b>S</b>	4510001	<b>STEP-CAB ACCESS, CAB MOUNTED</b>	DUAL SELF CLEANING CAB ENTRANCE STEPS
<b>O</b>	502008	<b>CAB DOORS</b>	LH STD./RH HINGED AT REAR
<b>O</b>	5120002	<b>POWER WINDOWS</b>	STAND UP CAB ONLY - SINGLE INTERNAL REGULATOR POWER WINDOW LH

S	6220017	<b>MIRRORS-DUAL WEST COAST</b>	MIRROR, BLACK, HTD, REMOTE W / LWR HTD CONVEX
S	630026	<b>HORN-AIR</b>	TWIN MOUNTED UNDER CAB
S	631001	<b>HORN-ELECTRIC</b>	SINGLE
O	661002	<b>CAB TILT MECHANISM-C.O.E.</b>	HYDRAULIC TILT WITH AIR ASSIST
S	6720001	<b>GRILLE</b>	AUTOCAR GRILLE
S	675001	<b>BUG SCREENS</b>	BUG SCREEN MOUNTED BEHIND GRILLE

### CAB INTERIOR

---

S	3800001	<b>STEERING WHEEL</b>	16" DIA. WHEEL, 2 SPOKE
O	381001	<b>STEERING COLUMN</b>	FIXED POSITION
O	5202002	<b>SEAT-DRIVER</b>	SEARS C2+ SEAT, AIR RIDE, AIR LUMBAR
O	521130	<b>SEAT-PASSENGER</b>	FOLDING SEAT/BACKREST
O	5222001	<b>SEAT BELTS-DRIVER</b>	THREE POINT RETRACTABLE, BRIGHT ORANGE COLOR, W/O COMFORT LATCH
O	5230001	<b>SEAT BELTS-PASSENGER</b>	LAP BELT WITH RESTRAINT STRAP
O	5260002	<b>SEAT INSERT</b>	MODURA, ASPHALT COLOR
O	538004	<b>CARPET &amp; MAT</b>	ALUMINUM DIAMOND PLATE - DRIVER SIDE
S	5500001	<b>CENTER CONSOLE</b>	CENTER CONSOLE
O	5510002	<b>REAR CONSOLE</b>	REAR CONSOLE W/ WIRE FRAME STORAGE CONTAINER
S	547001	<b>INSULATION-CAB THERMAL</b>	THERMAL INSULATION KIT FOR CAB
S	5942001	<b>CIGAR LIGHTER</b>	ONE (1) POWER PORT AND ONE (1) USB POWER PORT

### CAB CLIMATE CONTROL

---

S	0602001	<b>CAB TEMPERATURE SYSTEM</b>	AIR COND INTEGRAL WITH HEATER/DEFROSTER (GHG)
S	6092000	<b>AIR CONDITIONER AIR INTAKE FILTER</b>	AIR INLET 30 PPI DUST FILTER
S	612001	<b>AIR CONDITIONER CONDENSER</b>	STANDARD (RADIATOR MOUNTED)

### GAUGES & INSTRUMENTATION

---

S	0572001	<b>INSTRUMENTS SALES PKG</b>	ADVANCED DIAGNOSTIC DISPLAY - V1
S	1430001	<b>TRUCK ELECTRICAL CONTROL MODULE</b>	VEHICLE CONTROL UNIT
S	1362000	<b>TACHOMETER/RPM TACHOGRAPH</b>	ELECTRONIC TACHOMETER



<b>S</b>	1372000	<b>GAUGE-HOURMETER</b>	HOURLMETER INCLUDED IN ON BOARD DISPLAY
<b>S</b>	225009	<b>AIR INTAKE RESTRICTION INDICATOR</b>	GRADUATED, AIR CLEANER MOUNTED
<b>O</b>	3190001	<b>PTO CONTROLS</b>	PTO ELECTRIC CONTROL SWITCH
<b>S</b>	4390001	<b>GAUGE-FUEL LEVEL</b>	ELECTRONIC FUEL LEVEL
<b>S</b>	5712003	<b>GAUGE PANELS</b>	ALL GAUGES IMPERIAL
<b>O</b>	1472002	<b>VEHICLE MONITORING SYSTEM</b>	AUTOCAR GEOTAB TELEMATICS - FULL INSTALL - 3YR SUBSCRIPTION FROM DAY OF FACTORY INVOICE

## LIGHTING

<b>S</b>	8360003	<b>LAMPS-HEAD</b>	LED HEADLAMPS
<b>S</b>	8410002	<b>LAMPS-TURN SIGNAL - FRONT</b>	LED FRONT TURN SIGNALS
<b>S</b>	8510002	<b>LAMPS-MARKER</b>	AMBER LED ROOF MARKERS
<b>S</b>	859001	<b>LAMPS-RUNNING</b>	DAYTIME
<b>S</b>	8700001	<b>CIRCUIT PROTECTION DEVICE</b>	AUTO CIRCUIT BREAKERS

## RADIO/MISC

<b>O</b>	509002	<b>KEY &amp; LOCK SETS- IGN/DOORS</b>	DOOR & IGNITION SAME - SAME FOR FLEET - D324
<b>O</b>	509Q2002	<b>KEY QTY.</b>	2 ADDITIONAL KEYS PER TRUCK (4 TOTAL)
<b>O</b>	5902002	<b>RADIO</b>	AM/FM/USB/MP3/WB/BT
<b>O</b>	59A0002	<b>RADIO MOUNTING LOCATION</b>	RADIO MOUNTED IN RHS HEADLINER
<b>S</b>	5910002	<b>ANTENNA/POWER SUPPLY</b>	ANTENNA - ROOF MOUNTED
<b>O</b>	596005	<b>RADIO SPEAKERS</b>	2 DUAL CONE SPEAKERS
<b>O</b>	962003	<b>FIRE EXTINGUISHER</b>	DRY TYPE ABC 5LB. CAP MTD. IN CAB

## FRONT TIRES / WHEELS

<b>O</b>	9310046	<b>TIRE MANUFACTURER &amp; TREAD - FRONT</b>	MICHELIN XZU-S 2
<b>S</b>	930469	<b>TIRE SIZE &amp; LOAD RANGE - FRONT</b>	315/80R22.5L
<b>S</b>	9050015	<b>WHEELS-DISC FRONT</b>	22.5X9.0" STEEL, 5.25" INSET, HAYES

## REAR TIRES / WHEELS

<b>O</b>	9342006	<b>TIRE MANUFACTURER &amp; TREAD - REAR</b>	MICHELIN X WORKS Z (REPLACED BY XWZ2 AUG 2025 11R22.5 AND DEC 2024 11R24.5
<b>S</b>	933062	<b>TIRE SIZE &amp; LOAD RANGE - REAR</b>	11R22.5H

<b>O</b>	9140014	<b>WHEELS-DISC REAR</b>	22.5X8.25" STEEL, 6.2" INSET, HAYES
----------	---------	-------------------------	--

#### **PAINT**

---

<b>S</b>	950001	<b>CAB PAINT SCHEME</b>	SINGLE COLOR PAINT
<b>S</b>	9550001	<b>CAB PAINT TYPE</b>	STANDARD WHITE
<b>S</b>	9801002	<b>CAB COLOR-FIRST</b>	APPROVED -- DPSS-N0007EX -- STANDARD WHITE N0007
<b>S</b>	9861U1	<b>CHASSIS COLOR</b>	BLACK P3036
<b>S</b>	987949	<b>BUMPER COLOR</b>	SAME AS CHASSIS,UNPAINTED ALUM OR CHROME
<b>S</b>	988401	<b>DISC WHEEL OR RIM COLOR</b>	STEEL, E-COAT WHITE / ALUM-UNPAINTED

#### **ADDITIONAL OPTIONS**

---

<b>S</b>	899002	<b>CHASSIS WARRANTY</b>	STANDARD WARRANTY
<b>O</b>	899A203	<b>TRANSMISSION WARRANTY</b>	ALLISON 5YR. EXT WARRANTY
<b>O</b>	899B511	<b>ENGINE WARRANTY</b>	2025 L9_EPA_LD1_5 Years / 150,000 Miles_PP1_Matrix:232163
<b>O</b>	899K530	<b>EXHAUST AFTERTREATMENT EXTENDED WARRANTIES</b>	2025 L9_EPA_AT3_5 Years / 150,000 Miles_Matrix:234547
<b>S</b>	978015	<b>FLOOR PLAN</b>	15 DAYS FLOORING

*Quote Summary and Firm Order\**

06/20/2025

Values are in U.S. Dollar

<i>EQUIPMENT</i>	<i>EACH</i>	<i>TOTAL</i>
ACX64 Class 8	\$214,511.00	\$214,511.00
DUAL DRIVE LH SIT AND RH STAND		
QUANTITY	1	
ADDITIONAL PURCHASED COVERAGES	\$4,842.00	\$4,842.00
EPA SURCHARGE	\$0.00	\$0.00
LEGACY ENGINE VOLUME PENALTY FEE	\$0.00	\$0.00
ADDITIONAL PRICE ADJUSTMENT	\$0.00	\$0.00
FACTORY CONTRACT MODIFICATION	\$0.00	\$0.00
OUTSIDE CONTRACT FREIGHT	\$0.00	\$0.00
PDI CHARGES	\$750.00	\$750.00
ADDITIONAL SURCHARGE	\$0.00	\$0.00
NJPA FEE	\$1,000.00	\$1,000.00
NORTH AMERICAN FREIGHT VIA DESIGNATED SHIPPER	\$1,950.00	\$1,950.00
TEMPORARY FREIGHT CHARGE	\$600.00	\$600.00
TOTAL EQUIPMENT PRICE	\$223,653.00	\$223,653.00

<i>OTHER CHARGES</i>	<i>EACH</i>	<i>TOTAL</i>
FET AMOUNT TOTAL	\$0.00	\$0.00
STATE TAX/OTHER FEES	\$0.00	\$0.00
TOTAL QUOTE	\$223,653.00	\$223,653.00

**ACKNOWLEDGEMENT OF SPECIFICATIONS AND FIRM ORDER\***

Customer has read the specifications set forth in this Quote, agrees they are accurate and hereby places a firm order for trucks with such specifications according to this Quote Summary and Firm Order.\* Customer acknowledges that AUTOCAR will custom build the trucks. Accordingly, Customer agrees that once AUTOCAR places a truck in the production schedule, the order placed under this Quote Summary and Firm Order is binding and cannot be cancelled, changed, reduced or suspended by dealer or Customer except with AUTOCAR's written consent. Any provision contained in any Customer acknowledgment, purchase order or Customer terms and conditions that allows for cancellation without Autocar's written consent of the order placed under this Quote Summary and Firm Order is rejected and is not binding on AUTOCAR. This Quote Summary and Firm Order is subject to AUTOCAR's standard Quote Terms and Conditions, which can be found by [clicking here](#).

The undersigned having authority to agree on behalf of Dealer and Customer sign this Quote Summary and Firm Order as of the last date noted below the signatures.

Dealer Signature: \_\_\_\_\_

Customer Signature: \_\_\_\_\_

Printed Name: \_\_\_\_\_

Printed Name: \_\_\_\_\_

Title: \_\_\_\_\_

Title: \_\_\_\_\_

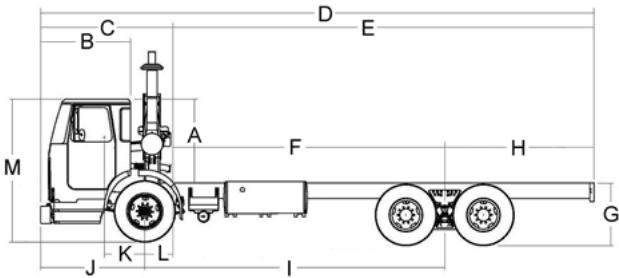
Date: \_\_\_\_\_

Date: \_\_\_\_\_

\* Quotes are based on the specifications requested and the cost of materials and labor as of the date issued. AUTOCAR reserves the right to alter its prices at any time prior to delivery of the trucks. Prices may be updated to reflect changes to specifications, labor costs, or material costs - including, but not limited to, any new or additional tariffs. Any price changes will be communicated to Customer. Final prices will be reflected on the AUTOCAR vehicle invoice or on a document expressly evidencing AUTOCAR's intent to be bound.

06/20/2025

Dimensions



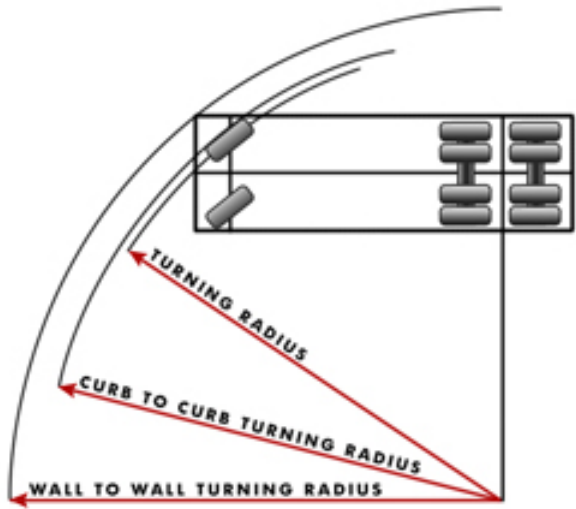
	Dimension(in)	Description
A	59.00	CAB HEIGHT
B	62.00	BUMPER TO BACK OF CAB
C	95.00	EFFECTIVE BUMPER TO BACK OF CAB
D	330.75	OVERALL LENGTH
E	233.00	EFFECTIVE CAB TO END OF FRAME
F	129.00	EFFECTIVE CAB TO REAR AXLE
G	41.65	UNLADEN FRAME HEIGHT
H	104.00	OVERHANG
I	153.00	WHEELBASE
J	71.00	BUMPER TO FRONT AXLE
K	-24.00	DRIVER CENTER OF GRAVITY
L	24.00	EFFECTIVE FRONT AXLE TO BACK
M	100.65	OVERALL HEIGHT
N	2.75	FRONT FRAME EXTENSION

SPECIFICATION SUMMARY

Model	ACX64 Class 8
Engine	L9, 360HP / 2200RPM / 1150 LB-FT, CUMMINS
Transmission	ALLISON 4500 SERIES,6-SPEED
Rear Axle	MERITOR RT46-160 46,000 LB
Rear Axle Ratio	5.63
Rear Tire	11R22.5H

06/20/2025

Turning Radius



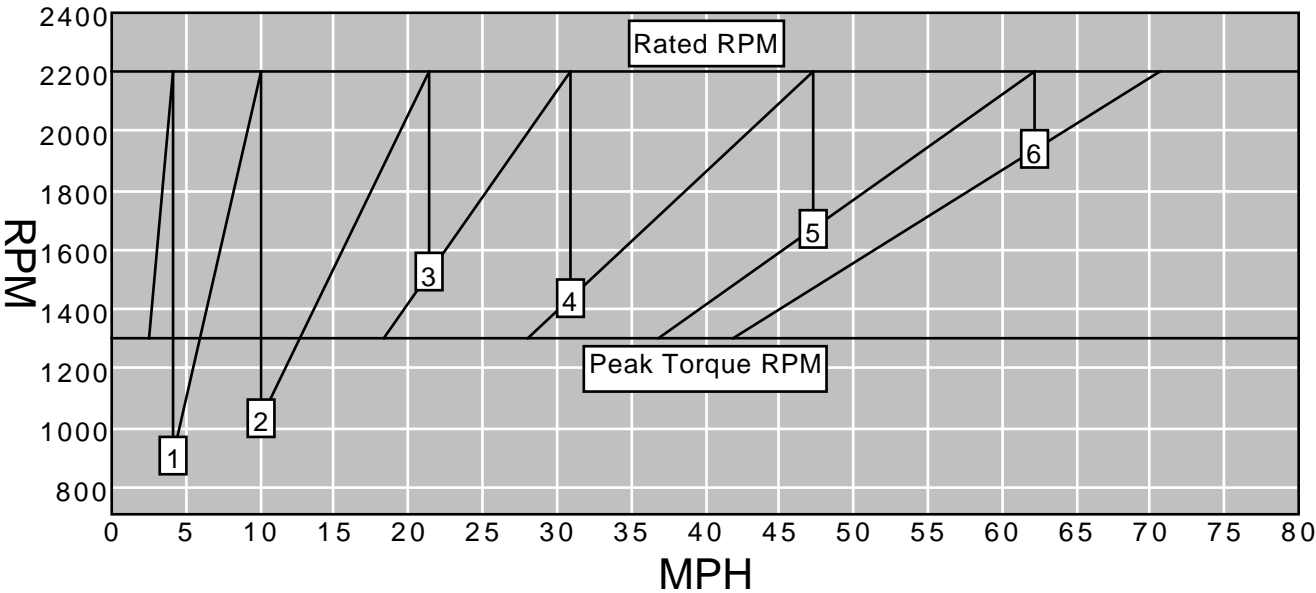
	Dimension(ft)	Description
A	24.86	TURNING RADIUS
B	51.80	CURB TO CURB TURNING DIAMETER
C	57.99	WALL TO WALL TURNING DIAMETER

SPECIFICATION SUMMARY

Model	
Engine	L9, 360HP / 2200RPM / 1150 LB-FT, CUMMINS
Transmission	ALLISON 4500 SERIES,6-SPEED
Rear Axle	MERITOR RT46-160 46,000 LB
Rear Axle Ratio	5.63
Rear Tire	11R22.5H

06/20/2025

Shift Chart



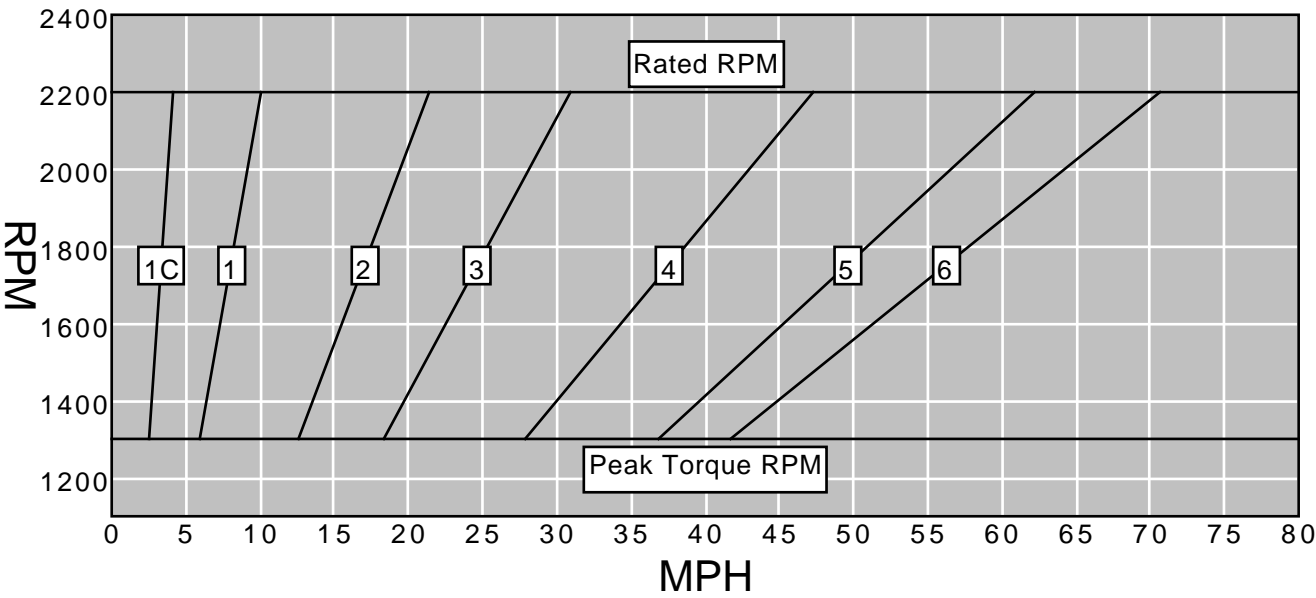
Gear	Trans. Ration	Rear Axle Ration	Overall Reduction	% Split	MPH	RPM After Shift
1C	11.37	5.63	64.0	0.0	4.2	0
1	4.70	5.63	26.5	141.9	10.1	909
2	2.21	5.63	12.4	112.7	21.4	1,034
3	1.53	5.63	8.6	44.4	30.9	1,523
4	1.00	5.63	5.6	53.0	47.3	1,437
5	0.76	5.63	4.3	31.6	62.2	1,672
6	0.67	5.63	3.8	13.4	70.6	1,939

SPECIFICATION SUMMARY

Model	ACX64 Class 8
Engine	L9, 360HP / 2200RPM / 1150 LB-FT, CUMMINS
Rated Power	360 HP @ 2200 RPM
Peak Torque	1150 LB-FT @ 1300
Transmission	ALLISON 4500 SERIES,6-SPEED
Rear Axle	MERITOR RT46-160 46,000 LB
Rear Axle Ratio	5.63
Rear Tire	11R22.5H
Tire Revolution	496

06/20/2025

Operating Range



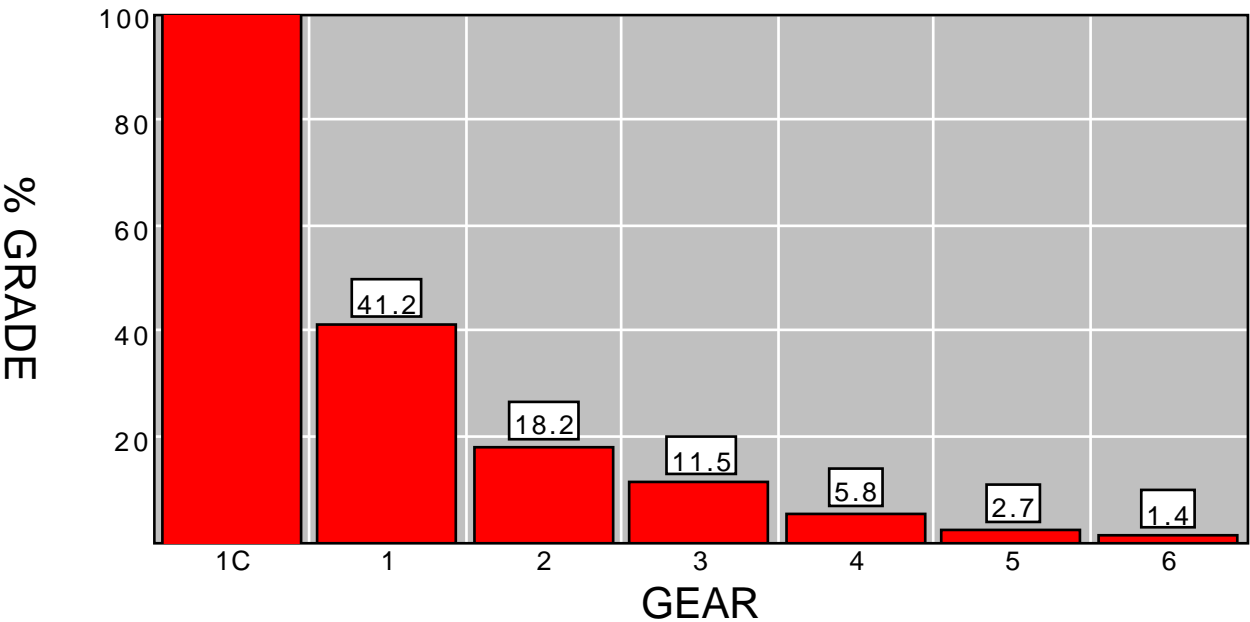
	Gear	Trans. Ratio	Rear Axle Ratio	Minimum MPH	Maximum MPH
	1C	11.37	5.63	2.5	4.2
	1	4.70	5.63	5.9	10.1
	2	2.21	5.63	12.6	21.4
	3	1.53	5.63	18.3	30.9
	4	1.00	5.63	27.9	47.3
	5	0.76	5.63	36.8	62.2
	6	0.67	5.63	41.7	70.6

SPECIFICATION SUMMARY

Model	ACX64 Class 8
Engine	L9, 360HP / 2200RPM / 1150 LB-FT, CUMMINS
Rated Power	360 HP @ 2200 RPM
Peak Torque	1150 LB-FT @ 1300
Transmission	ALLISON 4500 SERIES,6-SPEED
Rear Axle	MERITOR RT46-160 46,000 LB
Rear Axle Ratio	5.63
Rear Tire	11R22.5H
Tire Revolution	496

Gradeability

06/20/2025



Gear	Trans. Ratio	Rear Axle Ratio	Overall Reduction	Peak Torque	Wheel HP	MPH	Maximum Grade%
1C	11.37	5.63	64.0	1,150.0	287.6	2.5	101.4
1	4.70	5.63	26.5	1,150.0	287.6	5.9	41.2
2	2.21	5.63	12.4	1,150.0	287.6	12.6	18.2
3	1.53	5.63	8.6	1,150.0	287.6	18.3	11.5
4	1.00	5.63	5.6	1,150.0	287.6	27.9	5.8
5	0.76	5.63	4.3	1,150.0	287.6	36.8	2.7
6	0.67	5.63	3.8	1,150.0	287.6	41.7	1.4

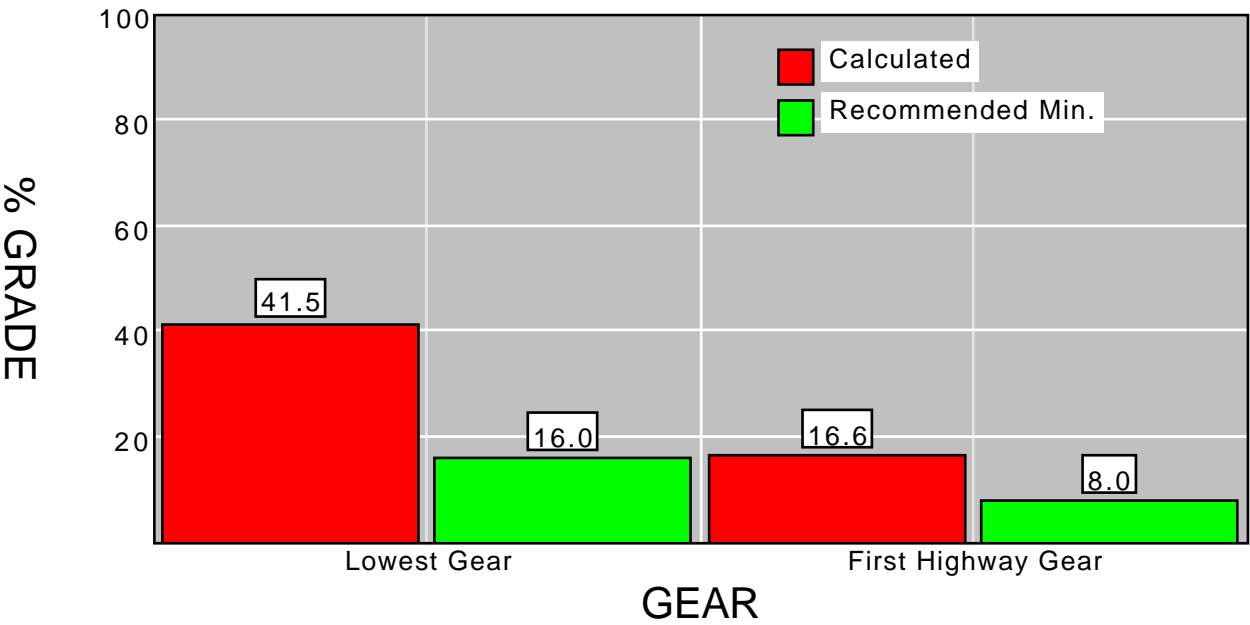
SPECIFICATION SUMMARY

Model	ACX64 Class 8
Engine	L9, 360HP / 2200RPM / 1150 LB-FT, CUMMINS
Peak Torque	1150 LB-FT @ 1300
Transmission	ALLISON 4500 SERIES,6-SPEED
Rear Axle	MERITOR RT46-160 46,000 LB
Rear Axle Ratio	5.63
Rear Tire	11R22.5H
Tire Revolution	496
GVW/GCV	0
Surface	Concrete



Startability

06/20/2025



Gear		Application	Recommended Minimum Grade %	Calculated Grade %
Lowest Gear	City		12.0	n/a
	On Highway		16.0	41.5
	On-Off Highway		18.0	n/a
	Off Highway		20.0	n/a
			0.0	n/a
First Highway Gear	All Applications		8.0	16.6

"SPECIFICATION SUMMARY"

Model	ACX64 Class 8
Engine	L9, 360HP / 2200RPM / 1150 LB-FT, CUMMINS
Clutch Torque	549 LB-FT 700 RPM
Transmission	ALLISON 4500 SERIES,6-SPEED
Rear Axle	MERITOR RT46-160 46,000 LB
Rear Axle Ratio	5.63
Rear Tire	11R22.5H
Tire Radius	19.6
GVW/GCV	0
Surface	Concrete
Terrain	On Highway

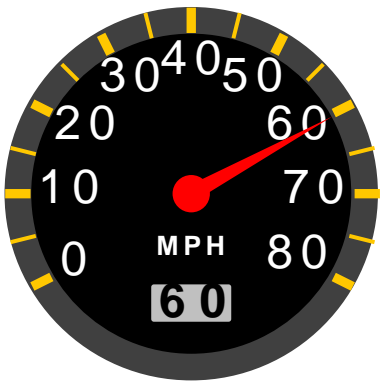
06/20/2025

Top Speed

Speed At Maximum RPM



RPM At 60MPH



	MPH	RPM
Top Speed	70.6	2,200
Cruise Speed	60.0	1,870
Minimum Of Engine Range	22.4	700
Maximum Of Engine Range	70.6	2,200
Minimum Of Economy Range	22.4	700
Maximum Of Economy Range	70.6	2,200

**SPECIFICATION SUMMARY**

---

Model	ACX64 Class 8
Engine	L9, 360HP / 2200RPM / 1150 LB-FT, CUMMINS
Transmission	ALLISON 4500 SERIES,6-SPEED
Rear Axle	MERITOR RT46-160 46,000 LB
Rear Axle Ratio	5.63
Rear Tire	11R22.5H
Tire Revolution	496

***GAWR, GVWR & Tire Pressure***

06/20/2025

GVW Rating – 66,000#			
Front GAWR	20,000#	Rear GAWR	46,000#
Front Suspension	22,000#	Rear Suspension	46,000#
Front Wheels & Hubs	20,000#	Rear Wheels & Hubs	52,000#
Front Tire Size & Tread	20,000#	Rear Tire Size & Tread	48,000#
Front Brakes	20,000#	Rear Brakes	52,000#
Front Axle	20,000#	Rear Axle	46,000#
PSI			
Front PSI	130.0	Rear PSI	105.0

## *Cummins Statement*

06/20/2025

Cummins Inc. will claim all emissions credits authorized by EPA, CARB, or CARB-adopting state regulations for sale of our engines. This may result in products being ineligible for purchase using certain grant or incentive funding ("voluntary purchase incentive program(s)"). Purchasers and users of products are solely responsible for ensuring their compliance with the terms of any voluntary purchase incentive program(s).



Sourcewell   
Awarded Contract

June 24, 2025

Request for Quotation:  
New 2025 McNeilus 3.5HD  
Rear Load Refuse Truck

Prepared For:  
Brett Wollenzien  
City of West Allis  
6300 W McGeoch Ave  
West Allis, WI 53219



Prepared by:  
MacQueen  
N60 W15835 Kohler Ln  
Menomonee Falls, WI 53051

Brett,

The attached proposal lists all the options that make up the combined purchase price. The final sections explain the terms, MacQueen services, training, and warranty for the proposed machine.

Thank you for this opportunity to submit this proposal on behalf of your equipment needs.

Sincerely,

Cody Pfennig  
Sales Representative  
MacQueen



## CHASSIS

Option Description  
GVW Category  
Corporate Contract  
Destination State/Country  
Chassis Type  
Chassis Make  
Chassis Model  
Steering Configuration  
Fuel Type  
Fuel System  
Primary CNG Capacity  
Chassis Model Year  
Packer Type  
Frame CNG Bracket Type

Option Selection  
33,001 LBS OR GREATER  
MUNICIPAL  
MINNESOTA  
CUSTOMER CHASSIS  
AUTOCAR  
ACX  
SS SEATED and CS STAND UP STEER  
DIESEL  
DIESEL  
DIESEL  
2026  
3.5YD TG HEAVY DUTY REARLOADER  
NO FRAME CNG SYSTEM SELECTED

Option Description  
Engine  
Transmission  
Double Frame  
Cab Mirrors  
Pump Drive  
Rear Suspension  
Exhaust Location  
Rear Tire Arrangement  
Engine Horsepower  
Transmission Oil Cooler

Option Selection  
CUM ISL/ISC-AFTER 1/1/2017 EMI  
ALLISON 4500 RDS  
TRUE  
AERO STYLE  
REMOTE CONSTANT MESH  
HENDRICKSON PRIMAXX AIR RIDE  
LEFT HAND VERTICAL EXHAUST  
DUAL TIRE TANDEM AXLE  
HORSEPOWER GREATER THAN 300  
NO

## BODY

Option Description  
Capacity  
Body Floor Thickness  
Roof  
Side Access Door  
Access Door Ladder  
Hyd Tube Front Cover  
End Cap Reinforcement  
Rear to Cab Buzzer  
Floor Build Location  
Model/Capacity

Option Selection  
20 YD REAR LOADER  
AR200 3/16"  
STANDARD ROOF  
SS DOOR HINGED FORWARD  
ANSI FOLD UP W/SHUTDOWN  
STD  
TRUE  
KEYPAD BOTH SIDES TG  
DODGE CENTER  
2016 REL 3.5HD



## BODY OPTIONS

Option Description  
Cab Control  
TG Hole Mounting Loc  
Power Dist Module Loc  
Load Edge  
Hopper Liner  
Tailgate Lock  
Slide and Sweep Controls  
Tailgate Steps  
Tailgate Seal  
Packer/Sweep Panels  
Nitrited S and S Pin  
Hopper Bottom  
Tailgate Lift Cylinder  
Hook Retaining Loop  
Guides and Latches  
Plumb For Quick-Tip  
Remote Tailgate Lube  
S and S Dock Handle On CS  
Telematics

Option Selection  
IN DASH CONTROL SWITCHES  
UPPER HOLE  
FRONT OF BODY SS TOP-STANDARD  
B-TYPE (STANDARD/BAYNE)  
3/16" AR200 STD HOPPER  
TURNBUCKLE LOCK  
CS and SS STANDARD LINKAGE  
16"-24" ADJUSTABLE HEIGHT STEP  
STANDARD HEIGHT  
STANDARD  
TRUE  
1/4" AR200 W/ CS 1.5" DRAIN  
STANDARD  
STREETSIDE  
NO  
NO  
REMOTE TG LIFT,HINGE,S and S LUBE  
NO  
TRUE

## HYDRAULICS

Option Description  
Hydraulic Res Breather  
Hyd Res Filler Cap  
Hyd Fluid Sample Port  
Hydraulic Fluid  
Hydraulic Reservoir  
Hydraulic Pump  
Hydraulic Return Filter  
Ejector Cylinder  
Hyd Hose Wrap  
Res Suction Shutoff Valve  
Valve on Res Return  
TG/Ejector VLV Location  
Slide and Sweep Cyl Make

Option Selection  
FILLER/BREATHING ON RESERVOIR  
STANDARD FILLER CAP  
CHECK FLUID KP14NV 90DEG  
ISO46-US OIL  
INSIDE OF BODY MOUNTED STEEL  
GEAR PUMP  
SCHROEDER IN RESERVOIR  
MAILHOT  
CORDURA WRAP REQUIRED HOSES  
RED HANDLE BALL VALVE  
NO VALVE ON RES RETURN  
STANDARD LOCATION FROM FOB  
ROSENBOOM





## LIGHTING

Option Description  
DOT Light Manufacturer  
Tailgate Camera Assist Lights  
Mid-Body DOT Oval Light  
Tailgate Outer Corner Lights  
Light/Harness Package  
Smart Lights  
Mid Body Work Lights  
Hopper Work Lights  
Hopper Lt Switch On TG  
DOT Reverse Lights  
Mid Body Work Lt Switch

Option Selection  
ECONOMY LED  
DUAL ECONOMY 5" ROUND LED  
OVAL AMBER TURN SIGNAL/MARKER  
4" AMBER TURN SIGNALS  
STANDARD LIGHT and HARNESS  
4" PETERSON TG, FRONT, TG SIDE (QTY 8)  
FDR MT RD ECON 5" LED  
TWO ECONOMY 5" ROUND LED  
KEYPAD CURB SIDE TG  
4" DUAL UPPER REVERSE LIGHTS  
SINGLE SWITCH FOR BOTH LIGHTS

## CAMERA

Option Description  
Monitor Display In Rev  
Camera/Monitor Make  
Backup Camera  
Monitor Mount  
CC Camera Qty

Option Selection  
TG CAMERA  
SSV9" MON/DVR 6 PORT  
CENTER TG CYL SUPPORT BEAM  
MOUNTED BETWEEN SEATS W/SWIVEL  
SSV9 Camera Qty 1

## RESIDENTIAL OPTIONS

Option Description  
Cart Tipper Location  
Cart Tipper Type  
Cart Tipper Mount  
Cart Tipper Make  
Cart Tipper Controls  
Tipper Mount Style

Option Selection  
CS and SS STANDARD GATE  
MTM INSTALLED TIPPER  
FLUSH MOUNT  
PERKINS D6220B-COMP BUSH  
CS and SS MANUAL LINKAGE  
BOLTED



## MISC BODY

Option Description  
Limit Speed With Tailgate Open  
Front Mudflaps  
Backup Alarm  
Shovel  
Shovel Holder Tailgate  
Broom Holder Tailgate  
Auto-Neutral  
In-Cab Ejection Control  
In-Cab Tailgate Control  
Battery Box Location

Option Selection  
NO  
BLACK MCNEILUS LOGO  
PRECO 1059 DUAL TONE-LWR LT BX  
ONE 11" PLASTIC  
EJECTOR MOUNT  
PUSH BROOM HOLDER BOTH SIDES  
TRUE  
TRUE  
MOMENTARY SWITCH  
STREET SIDE FRAME MOUNTED

## SAFETY

Option Description  
Fire Extinguisher In Cab  
Triangle Safety Kit

Option Selection  
5# ABC  
CUSTOMER INSTALLED IN CAB

## PAINT

Option Description  
CNG System Cover Color  
Paint Scheme  
Number Of Body Colors  
Body Paint Category  
Body Clear Coat  
Body Color 1 Description  
Body Color 1 Code  
Cab / Hood Paint  
Wheel Paint  
Decal Language  
Undercoating  
Conspicuity Tape  
Access Ladder Color

Option Selection  
NO ADDED CNG SYSTEM COVER COLOR  
STANDARD PAINT TEMPLATE  
QTY 1  
1 COLOR, MEDIUM COMPLEXITY  
ANTI-GRAFFITI CLEAR COAT  
Yellow  
HST500647  
NO CAB PAINT  
NO WHEEL PAINT  
ANSI COMPLIANT ENGLISH  
VG104 UNDERCOATING ON BODY  
TRUE  
MATCH BODY COLOR

## AXLE

Option Description  
Pusher Axle Quantity  
Pusher Tire  
Pusher Lift Control  
Tag Lift Control

Option Selection  
0  
NO PUSHER SELECTED  
NO PUSHER AXLE IN ORDER  
NO TAG AXLE IN ORDER



**Special Features and Options:**

REF-ETO-25502 Power beyond plow setup for rear loaders.

REF-NPO-12716 Install Pinnacle fenders on multiple chassis makes/body models. Work to be completed by Franzen.

REF-NPO-13120 Converting customer from LFL to HFL by doing LFL options at MN service after the truck exits the factory. Install Slide and Sweep Grease lines, Install in cab controls for tailgate lift and eject to be completed at MN Service.

**Extended Warranties:**

1317396 WARRANTY - BODY RLXC, 2YR

**Subscriptions:**

**Options Available at Additional Cost (not included in quoted price):**

**Additional Notes: Pricing per Sourcewell Contract #110223-MCN for the City of West Allis.**

The following Force America controls and Bonnell plow hitch will be installed by our Menomonee Falls shop:

**FORCE AMERICA CONTROLS:**

- ✓ 1090588  
CFG-151159  
Gen2 AAF10(UNL)-4-4-E  
FORCE AMERICA Gen2 ADD-A-FOLD VALVE TO OPERATE: D/A PLOT LIFT WITHOUT  
FLOAT AND D/A PLOW ANGLE  
F-A KIT-CFG
- ✓ 1086365  
ENCLOSURE, MCV-99, AAF, PC STEEL, 2&3 SECTION WITH (0)  
#12 SECTION  
MCV-99ENCL-03S-PC
- ✓ 1090624  
CFG-119581  
MPJC-BLANK-3-ULTRA-NO-ARM C/O WEST ALLIS WI  
ELC KIT-CFG

**PLOW HITCH PARTS:**

- ✓ Plow Hitch
- ✓ H10130  
4in X 6in Double Acting Cylinder
- ✓ H10190  
Telescopic Lift Arm in lieu of Rigid Lift Arm
- ✓ Custom Bumper Plate to fit Autocar Chassis

**PLOW HITCH INSTALL:**

- ✓ INSTALL BONNELL HITCH ASSEMBLY
- ✓ REMOVE AND MODIFY FRONT BUMPER
- ✓ MOUNT AND INSTALL FORCE CONTROL BOX. INSTALL FORCE CONTROL  
VALVE IN BOX. INSTALL FORCE CONTROLS IN CAB.
- ✓ INSTALL PUSH/PULL VALVE ON BODY.
- ✓ INSTALL COUPLERS ON FRONT BUMPER
- ✓ RUN HYD TO MCNEILUS POWER BEYOND VALVE AND TO TANK FROM  
FORCE CONTROLS.
- ✓ TOP OFF HYD FLUID
- ✓ MAKE ANY OTHER MODIFICATIONS OR ADJUSTMENTS AS NECESSARY.
- ✓ TEST ALL OPERATIONS AFTER INSTALL.



### Pricing

2025 McNeilus 3.5HD w/ Included Options	\$215,853.00
Tariff Surcharge	\$1,779.00
<b>Total</b>	<b>\$217,632.00</b>

\*Price includes freight, PDI, and delivery and is based on Sourcewell Contract #110223-MCN for the City of West Allis

Quoted prices are based on current costs and therefore subject to change with written notice to account for pricing changes beyond seller's control.

### MACQUEEN EQUIPMENT SERVICES:

- ✓ Full service-center located in Menomonee Falls, WI with over \$1,000,000 in parts stocked.
  - 70+ years of experience servicing refuse equipment in Wisconsin.
- ✓ 7 factory qualified service technicians including over-the-road service.
- ✓ One of our Product Training Specialists, Travis Fritz or Tim Schell, will fully train operators upon delivery.
  - They can also be scheduled to come back in events such as new hires, turnover, or if operators simply want to refresh knowledge. Fees for non-delivery training sessions should be discussed with Travis and Tim.
  - They are available by phone for questions at any time:
    - Travis' mobile: (920) 263-7272
    - Tim's mobile: (262) 893-3611

### PARTS AND SERVICE CONTACTS:

❖ Aaron Long – Service Manager  
(414) 614-4799 | aaron.long@macqueengroup.com

❖ Bill Wellman – Parts Manager  
(262) 252-4744 | bill.wellman@macqueengroup.com

**Terms of Sale:** Net 30 Terms. Estimated delivery is December 2025/January 2026. Signature below will signify intent to purchase the above machine.

SIGNATURE: \_\_\_\_\_ DATE: \_\_\_\_\_



### **Terms and Conditions of Sale Including Limitations of Warranty**

**Order Placement.** All goods and services furnished by McNEILUS FINANCIAL, INC. d/b/a McNEILUS TRUCK AND MANUFACTURING ("McNeilus") are governed by these Terms and Conditions of Sale. Placement of order by Buyer shall be in accordance with McNeilus' then current procedure. Acceptance by McNeilus of Buyer's order is expressly conditioned upon Buyer's acceptance of these Terms and Conditions, including those on the face of the order acceptance, and any provisions of Buyer's order or other communication in conflict with these Terms and Conditions are expressly rejected. Stenographic and clerical errors are subject to correction. No additions or modifications shall be valid unless confirmed in writing by McNeilus. McNeilus may supplement or alter these Terms and Conditions of Sale, issue product and/or sale policy announcements, or the like, but no such publication shall supersede any of these Terms and Conditions of Sale. McNeilus IS NOT BOUND TO FURNISH ITS GOODS OR SERVICES EXCEPT IN ACCORDANCE WITH THE TERMS OF ITS ORDER ACCEPTANCE FORM.

**Cancellation.** Buyer may cancel the order, in whole or in part, by written notice any time, provided the Buyer pays: a) the cost, including installation and removal costs, of any equipment purchased by McNeilus prior to cancellation for the purpose of filling Buyer's order and not usable by McNeilus for making other goods it then manufactures; b) the quoted price for all goods finished and ready to ship; and c) other reasonable costs (including but not limited to the cost of raw materials and goods still in the process of manufacture but unfinished at the time of cancellation) which McNeilus may have incurred in the performance of the order. Notice of cancellation is not effective until received by McNeilus at its corporate address (P.O. Box 70, 524 E. Highway St, Dodge Center, MN 55927 U.S.A., Attn: Corporate Secretary). If Buyer elects to cancel the order in part, McNeilus may, at its option, within a reasonable time thereafter, cancel the entire order by written notice. If Buyer elects, upon payment of costs of equipment, quoted prices of goods finished and ready to ship and/or costs of raw materials, it may take delivery of the same as provided below.

**Price/Delivery.** Unless otherwise provided by our quotation or agreed by us in writing, price and delivery terms shall be on FOBShipping Point (Incoterms 2010) basis. All applicable taxes shall be for the account of Buyer. Unless otherwise agreed in writing, we will select the route and manner of shipment, reserve the right to make delivery in installments when necessary, to invoice each installment separately and to expect payment for each installment within our selling terms. All risk of loss shall pass to the Buyer at the point and time of delivery set forth in this paragraph. Prices for goods shall be those in effect on the date of invoice unless otherwise provided by our quotation or agreed to in writing by McNeilus. If McNeilus shall fail to make delivery, or Buyer to accept delivery, according to the agreed upon delivery schedule, the other party may cancel the then remaining balance of the order unless the delay is an excusable delay. Prices are good for only quantities indicated. If shipment or any other act or condition affecting payment for the goods or any part of them shall be delayed on account of Buyer, payment shall be due as if shipment had been made. A reasonable storage charge may be made and such storage shall be at the risk of Buyer.

**Payment/Credit/Security.** All payments shall be made in U.S. dollars. Payment shall be due upon delivery or as otherwise provided by our quotation, order acceptance, invoice or other writing. We reserve and by its order Buyer grants a security interest in all goods wherever located until payment has been received, and Buyer will promptly execute and deliver documents provided by McNeilus to perfect such security interest. All orders received are subject to credit approval. Buyer agrees to submit to McNeilus those items reasonably requested in order to establish Buyer's credit. McNeilus shall be entitled to charge interest for payments made not in accordance with the stated or agreed upon terms of payment at the stated rate or the highest rate permitted by law, whichever is lower. Whenever McNeilus in good faith deems itself insecure, it may: cancel any outstanding orders with Buyer and/or hold production/shipment of any unfilled orders; modify or revoke its extension of credit to Buyer; reduce any unpaid debt by enforcing its security interest (and proceeds therefrom); and take any other steps permitted by law and necessary or desirable to secure McNeilus with respect to Buyer's payment of goods and services furnished or to be furnished. Buyer will pay McNeilus actual costs of collection incurred, including reasonable attorney's fees if McNeilus is required to commence any suit or proceeding for collection of any delinquency. Certificates of Origin for a Vehicle shall be released to Buyer only upon receipt of payment in full by McNeilus unless otherwise agreed upon in writing. Buyer shall permit McNeilus at any reasonable time to make audits of its collateral, including records of shipments, sales and payment. McNeilus may demand immediate payment for trucks, chassis or parts shipped from Buyer's location for which payment has not been received in accordance with agreed payment terms. Buyer shall have no right of offset against amounts owed to McNeilus.





**Acceptance:** Goods furnished or services performed by McNeilus in all events will be deemed to have been accepted within thirty (30) days after receipt by Buyer, unless rightfully rejected within such period by written notice to McNeilus, by Certified Mail, Return Receipt requested, setting forth all of the defects upon which the rejection is claimed. Claims for factory damage or shortages shall not be considered unless made in writing within ten (10) days after receipt of the goods and accompanied by reference to our bill of lading and invoice numbers. Claims for damage or shortage in transit must be filed by Buyer against carrier unless shipping costs are prepaid. Defective goods shall be held for McNeilus' inspection or disposition.

**Limited Warranty Disclaimer:** McNeilus warrants that all new and unused goods furnished by McNeilus are free from defect in workmanship and material as of the time and place of delivery by McNeilus in accordance with its Standard Limited Warranty in effect at the date of contract formation. Our obligation under this Limited Warranty is subject to the following qualifications: a) McNeilus or its authorized Dealer shall have been notified of such claimed defect within thirty (30) days of its discovery or such later date as is specified in the Standard Limited Warranty; b) the vehicle shall have been subject only to proper use normal for similar vehicles; and c) it shall have been regularly maintained and serviced in accordance with the Manufacturer's Service Manual. No defective part may be returned to the factory without our prior written consent, or that of our authorized representative. Any return must be with transportation prepaid, which may be refunded at the discretion of McNeilus. The Standard Limited Warranty for the goods is incorporated herein by reference. It is the exclusive warranty given by McNeilus. MCNEILUS HEREBY DISCLAIMS AND EXCLUDES ALL OTHER WARRANTIES, WHETHER EXPRESS, IMPLIED OR STATUTORY, INCLUDING ANY WARRANTY OF MERCHANTABILITY, ANY WARRANTY OF FITNESS FOR A PARTICULAR PURPOSE, AND ANY IMPLIED WARRANTIES ARISING FROM COURSE OF DEALING OR USAGE OF TRADE, notwithstanding any knowledge of McNeilus regarding the use or uses intended to be made of goods, proposed changes or additions to goods, or any assistance or suggestions that may have been made by McNeilus personnel.

**Buyer's Remedies.** At its option, McNeilus will repair or replace nonconforming goods, or allow a credit for the replacement price of parts.

**Exclusions of Incidental and Consequential Damages.** In no event shall McNeilus be liable for any incidental, special, indirect or consequential damages, whether resulting from nondelivery or from McNeilus' own negligence or other tort. This exclusion applies regardless of whether such damages are sought for breach of warranty, breach of contract, negligence, or strict liability in tort or under any other legal theory.

**Excusable Delay.** McNeilus shall not be responsible nor deemed to be in default on account of delays in performance due to causes which are beyond our control and not occasioned by our fault or negligence and which make our performance impracticable, including but not limited to civil wars, insurrections, strikes, riots, fires, storms, floods, other acts of nature, explosions, earthquakes, accidents, any act of government, delays in transportation, inability to obtain necessary labor supplies or manufacturing facilities, allocation regulations or orders affecting materials, equipment, facilities or completed products, failure to obtain any required license or certificates, acts of God or the public enemy, failure of transportation, epidemics, quarantine restrictions, failure of vendors (due to causes similar to those within the scope of this clause) to perform their contracts or labor troubles causing cessation, slowdown, or interruption of work provided such cause is beyond our reasonable control.

**Indemnification.** Buyer shall indemnify and hold McNeilus harmless from any and all damages or injury of any kind or nature whatsoever (including, but without limitation, personal injury and death) to all property and persons caused by, resulting from, arising out of or occurring in connection with the Buyer's sale, installation or use of goods sold or supplied by McNeilus and not caused by the negligence of McNeilus, its employees or agents, or arising out of defects in any such goods.

**No Waiver.** The failure of McNeilus upon knowledge of any default or violation by Buyer of any of the Terms and Conditions of this agreement to enforce its rights or remedies shall not be construed as a waiver of such default or violation, or of any provision hereof, or of any of its rights or remedies.



Equal Opportunity Employment. We are an Equal Opportunity Employer and have an Affirmative Action Plan on file. We comply with Executive Order No. 11246 dated September 24, 1965 and The Federal Occupational Safety and Health Act of 1970 along with all subsequent amendments. We comply with all other applicable federal, state and local laws, regulations and ordinances and agree upon request to furnish Buyer a certificate to such effect in such form as is acceptable to both parties.

Entire Agreement and Governing Law. Except as otherwise agreed in writing, this constitutes the entire agreement between us, superseding all prior quotations and understandings, oral or written. Any questions concerning the validity, interpretation or effect of this Agreement are governed by the laws of the State of Wisconsin. The rights and obligations of the parties hereunder shall not be governed by the provisions of the 1980 United Nations Convention on Contracts for the International Sales of Goods.

Export Laws. If applicable, performance is subject to U.S. export laws and regulations. Our failure to perform due to such laws and regulations shall not constitute a breach of this agreement.