



City of West Allis

Matter Summary

7525 W. Greenfield Ave.
West Allis, WI 53214

File Number	Title	Status
-------------	-------	--------

R-2011-0005 Resolution Introduced

Resolution to confirm and adopt the report of the Director of Public Works/City Engineer containing the schedule of proposed assessments for improvement of W. National Ave. from 120 feet east of S. 82 St. to 365 feet west of S. 84 St.; S. 84 St. from 75 feet north of W. Maple St. to 155 feet south of W. National Ave., and portions of intersecting streets by major asphalt resurfacing with miscellaneous sidewalk repair; miscellaneous driveway repair; sanitary sewer relay and utility adjustments; and S. 77 St. from W. Grant St. to W. Lincoln Ave.; S. 80 St. from W. Grant St. to 700 feet north of W. Grant St.; W. Oklahoma Ave. Service Dr. from S. 72 St. to S. 74 St.; and W. Oklahoma Ave. Service Dr. from S. Stratton Dr. to S. 80 St. by minor asphalt resurfacing with miscellaneous sidewalk repair; miscellaneous driveway repair and utility adjustments.

COMMITTEE RECOMMENDATION

Introduced: 1/18/2011

Adopt

Controlling Body: Public Works Committee

ACTION DATE:

4/8/2011

MOVER	SECONDER	
		Barczak
		Czaplewski
		Kopplin
		Lajsic
		Narlock
		Reinke
		Roadt
		Sengstock
		Vitale
	✓	Weigel
		TOTAL

AYE	NO	PRESENT	EXCUSED
✓			
✓			
✓			
<i>Excused</i>			✓
✓			
4			1

SIGNATURE OF COMMITTEE MEMBER

Henry Barczak

Chair

Vice-Chair

Member

COMMON COUNCIL ACTION

ADOPT

ACTION DATE:

JAN 18 2011

MOVER	SECONDER	
✓		Barczak
		Czaplewski
		Kopplin
		Lajsic
		Narlock
	✓	Reinke
		Roadt
		Sengstock
		Vitale
		Weigel
		TOTAL

AYE	NO	PRESENT	EXCUSED
✓			
✓			
✓			
✓			
✓			
✓			
✓			
✓			✓
✓			
✓			
9			1



City of West Allis

7525 W. Greenfield Ave.
West Allis, WI 53214

Resolution

File Number: R-2011-0005

Final Action:

JAN 18 2011

Sponsor(s): Public Works Committee

Resolution to confirm and adopt the report of the Director of Public Works/City Engineer containing the schedule of proposed assessments for improvement of W. National Ave. from 120 feet east of S. 82 St. to 365 feet west of S. 84 St.; S. 84 St. from 75 feet north of W. Maple St. to 155 feet south of W. National Ave., and portions of intersecting streets by major asphalt resurfacing with miscellaneous sidewalk repair, miscellaneous driveway repair, sanitary sewer relay and utility adjustments; and S. 77 St. from W. Grant St. to W. Lincoln Ave.; S. 80 St. from W. Grant St. to 700 feet north of W. Grant St.; W. Oklahoma Ave. Service Dr. from S. 72 St. to S. 74 St.; and W. Oklahoma Ave. Service Dr. from S. Stratton Dr. to S. 80 St. by minor asphalt resurfacing with miscellaneous sidewalk repair, miscellaneous driveway repair and utility adjustments.

WHEREAS, The Director of Public Works/City Engineer, pursuant to Preliminary Resolution Nos. R-2010-0209 and R-2010-0212, adopted on September 21, 2010, and R-2009-0227, adopted on October 6, 2009, prepared and submitted his report as provided in sec. 66.0703(5) of the Wisconsin Statutes, for the improvement of the streets as hereinafter described; and,

WHEREAS, The City Clerk/Treasurer gave due notice that such report was open for inspection at his office and also at the office of the Director of Public Works/City Engineer, and that all persons interested could appear before the Common Council and be heard concerning the matters contained in the Preliminary Resolution and Report; and,

WHEREAS, The Common Council met pursuant to such notice, at the time and place therein named; and having considered all statements and communications concerning the proposed improvements, relating to the matters contained in the Director of Public Works/City Engineer's report, including the schedule of proposed assessments, the Common Council makes no change in said report.

NOW, THEREFORE, BE IT RESOLVED By the Common Council of the City of West Allis

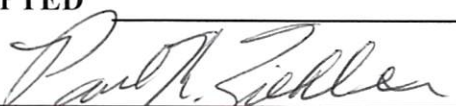
1. The report of the Director of Public Works/City Engineer, including the schedule of the proposed assessments, for the improvement of W. National Ave. from 120 feet east of S. 82 St. to 365 feet west of S. 84 St.; S. 84 St. from 75 feet north of W. Maple St. to 155 feet south of W. National Ave., and portions of intersecting streets by major asphalt resurfacing with miscellaneous sidewalk repair, miscellaneous driveway repair, sanitary sewer relay and utility adjustments; and S. 77 St. from W. Grant St. to W. Lincoln Ave.; S. 80 St. from W. Grant St. to 700 feet north of W. Grant St.; W. Oklahoma Ave. Service Dr. from S. 72 St. to S. 74 St.; and W. Oklahoma Ave. Service Dr. from S. Stratton Dr. to S. 80 St. by minor asphalt resurfacing with miscellaneous sidewalk repair,

miscellaneous driveway repair and utility adjustments be and the same is hereby approved and adopted.

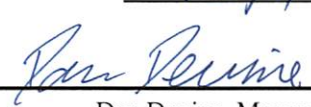
2. The property against which the assessments are proposed is benefited; the assessments shown on the report are true and correct, have been determined on a reasonable basis and are hereby confirmed.

3. The Director of Public Works/City Engineer is hereby authorized and directed to prepare final plans for the aforesaid area in accordance with the terms of this resolution.

EngP1121S, P1129S, P1130S, P1131S, P1132S

ADOPTED JAN 18 2011


Paul M. Ziehler, City Admin. Officer, Clerk/Treas.

APPROVED 1/20/11


Dan Devine, Mayor



ENGINEERING DEPARTMENT

Michael G. Lewis

Director of Public Works / City Engineer

414/302-8360

414/302-8366 (Fax)

City Hall

7525 West Greenfield Avenue

West Allis, Wisconsin 53214

www.ci.west-allis.wi.us

mlewis@ci.west-allis.wi.us

January 18, 2011

Honorable Mayor and Common Council
West Allis, Wisconsin

Dear Mayor and Council Members:

I herewith respectfully submit my report on the assessment of benefits for major asphalt resurfacing with miscellaneous sidewalk repair, miscellaneous driveway repair, sanitary sewer relay and utility adjustments in:

**W. National Ave. from 120 feet east of S. 82 St. to 365 feet west of S. 84 St., and
S. 84 St. from 75 feet north of W. Maple St. to 155 feet south of W. National Ave., and portions of
intersecting streets**

as directed in Preliminary Resolution No. R-2010-0209, adopted on 09/21/10.

And minor asphalt resurfacing with miscellaneous sidewalk repair, miscellaneous driveway repair and utility adjustments in:

**S. 77 St. from W. Grant St. to W. Lincoln Ave., and
S. 80 St. from W. Grant St. to 700 feet north of W. Grant St.**

as directed in Preliminary Resolution No. R-2010-0212, adopted 09/21/10.

And minor asphalt resurfacing with miscellaneous sidewalk repair, miscellaneous driveway repair and utility adjustments in:

**W. Oklahoma Ave. Service Dr. from S. 72 St. to S. 74 St., and
W. Oklahoma Ave. Service Dr. from S. Stratton Dr. to S. 80 St.**

as directed in Preliminary Resolution No. R-2009-0227, adopted 10/6/09.

This report consists of the following schedules attached hereto:

- Schedule A. - Preliminary Plans and Specifications;
- Schedule B. - Estimate of Entire Cost of Proposed Improvements;
- Schedule C. - Schedule of Proposed Assessments Against Each Parcel Affected.

The properties against which the assessments are proposed are benefited.

Respectfully submitted,

A handwritten signature in black ink, appearing to read "Michael G. Lewis".

Michael G. Lewis, P.E.
Director of Public Works/City Engineer

MGL:ns

Encs.

PROPOSED IMPROVEMENT OF

**W. National Ave. from 120 feet east of S. 82 St. to 365 feet west of S. 84 St.,
S. 84 St. from 75 feet north of W. Maple St. to 155 feet south of W. National Ave.,
and portions of intersecting streets**

by major asphalt resurfacing with miscellaneous sidewalk repair, miscellaneous driveway repair
sanitary sewer relay and utility adjustments

**S. 77 St. from W. Grant St. to W. Lincoln Ave.,
S. 80 St. from W. Grant St. to 700 feet north of W. Grant St.,
W. Oklahoma Ave. Service Dr. from S. 72 St. to S. 74 St., and
W. Oklahoma Ave. Service Dr. from S. Stratton Dr. to S. 80 St.**

by minor asphalt resurfacing with miscellaneous sidewalk repair, miscellaneous driveway repair,
and utility adjustments

SCHEDULE "A"

Preliminary Plans & Specifications Attached

SCHEDULE "B"

Estimate of the Entire Cost

\$654,500

SCHEDULE "C"

Schedule of Proposed Assessments
Against Each Parcel Affected

W. NATIONAL AVE.

S. 85 ST.

S. 84 TH ST.

S. 84 ST.

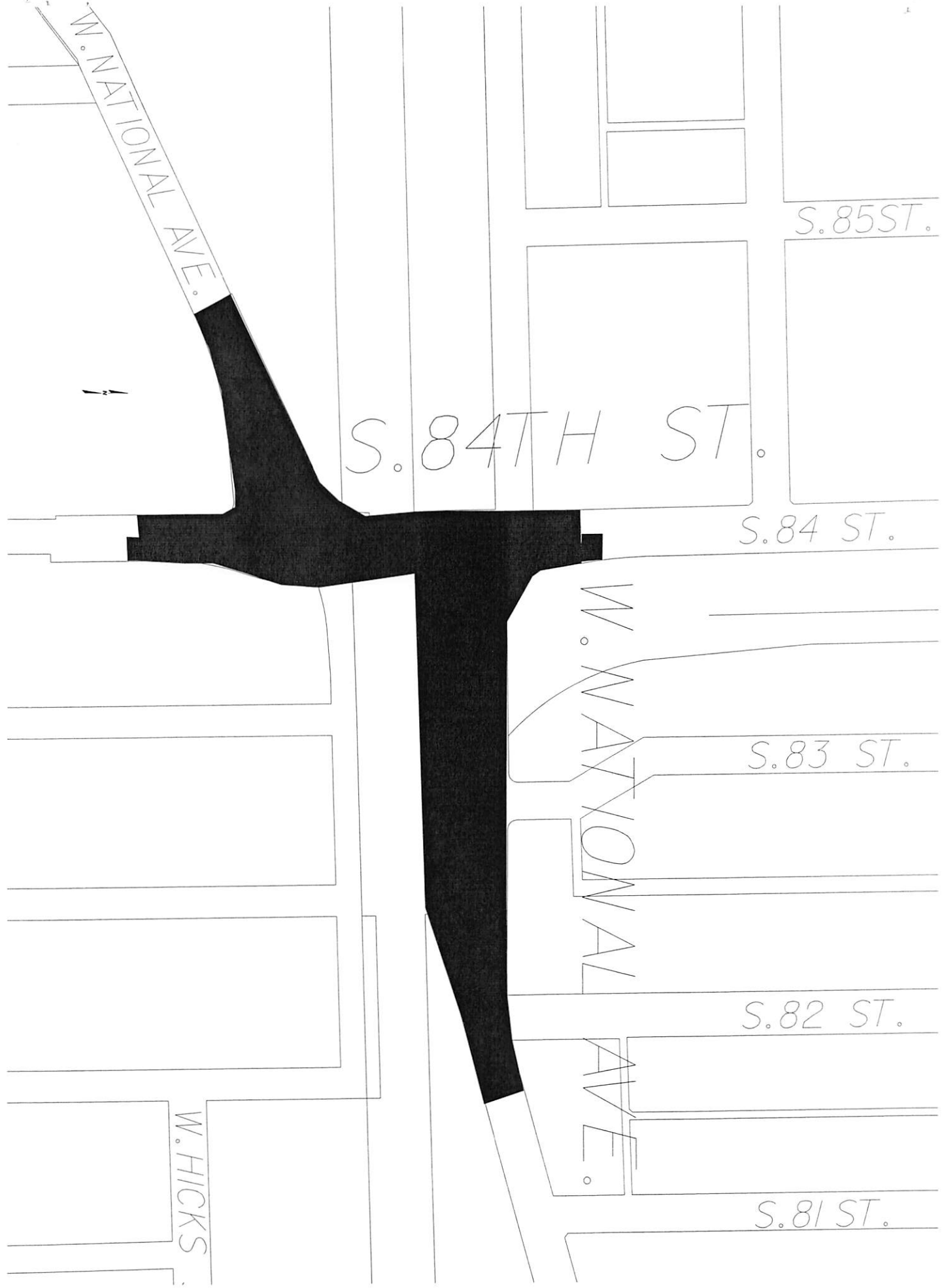
W. NATIONAL AVE.

S. 83 ST.

S. 82 ST.

S. 81 ST.

W. HICKS



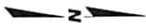
S. 78 ST.

W. LINCOLN AVE.

S. 77TH ST.

W. GRANT ST.

S. 76 ST.



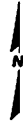
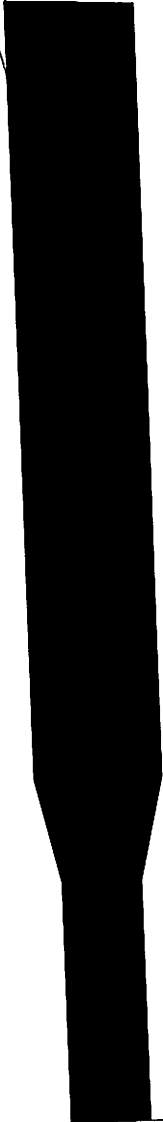
W. BECHER ST.

S. 81 ST.

S. 80TH ST.

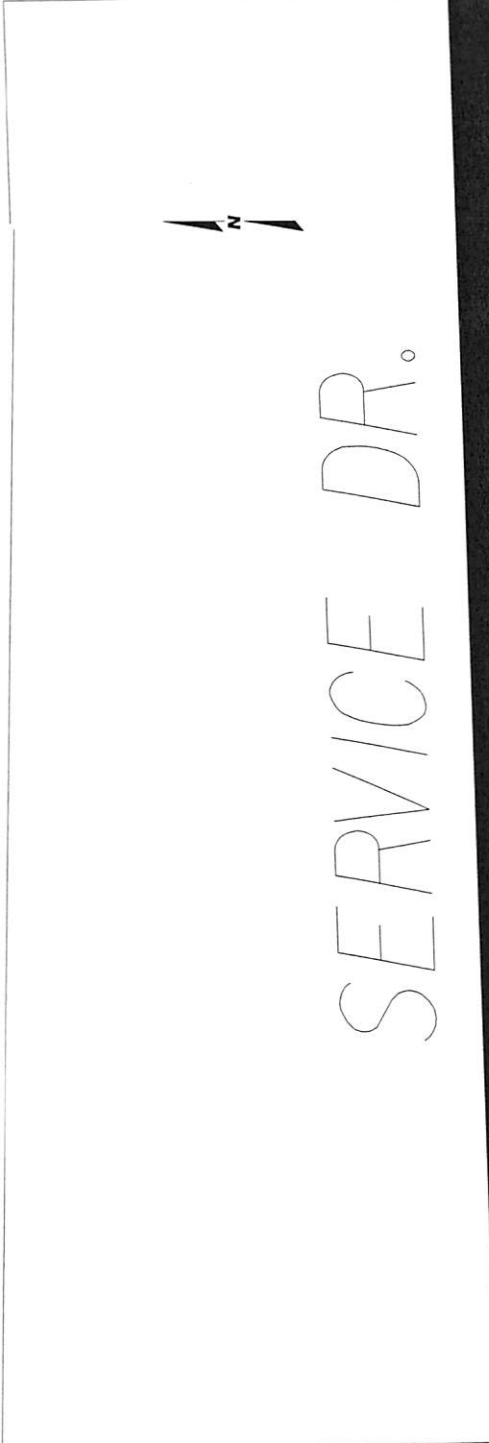
S. 79 ST.

W. GRANT ST.



W. BENNETT AVE.

S. 72 ST.



SERVICE DR.

S. 74 ST.

W. OKLAHOMA AVE.

S. 80 ST.

W. MANITOBA ST.



SERVICE DR.



W. OKLAHOMA AVE.

~~S. STRATTON DR.~~



ENGINEERING DEPARTMENT

Michael G. Lewis

Director of Public Works / City Engineer

414/302-8360

414/302-8366 (Fax)

City Hall

7525 West Greenfield Avenue

West Allis, Wisconsin 53214

www.ci.west-allis.wi.us

mlewis@ci.west-allis.wi.us

January 18, 2011

Board of Public Works
West Allis City Hall
West Allis, Wisconsin

Dear Board Members:

I am herewith submitting preliminary plans and an estimate of costs for the major asphalt resurfacing with miscellaneous sidewalk repair, miscellaneous driveway repair, sanitary sewer relay and utility adjustments in:

**W. National Ave. from 120 feet east of S. 82 St. to 365 feet west of S. 84 St.,
S. 84 St. from 75 feet north of W. Maple St. to 155 feet south of W. National Ave., and
portions of intersecting streets**

Estimated Construction Cost:	\$ 299,000
Contingency:	30,000
TOTAL:	\$ 329,000

And minor asphalt resurfacing with miscellaneous sidewalk repair, miscellaneous driveway repair and utility adjustments in:

**S. 77 St. from W. Grant St. to W. Lincoln Ave.,
S. 80 St. from W. Grant St. to 700 feet north of W. Grant St.,
W. Oklahoma Ave. Service Dr. from S. 72 St. to S. 74 St., and
W. Oklahoma Ave. Service Dr. from S. Stratton Dr. to S. 80 St.**

Estimated Construction Cost:	\$ 296,000
Contingency:	29,500
TOTAL:	\$ 325,500

Sincerely,

Michael G. Lewis, P.E.
Director of Public Works/City Engineer

MGL:ns

ASSESSMENT REPORT FOR COUNCIL

HEARING DATE: January 18, 2011

LOCATION

DESCRIPTION: W. National Ave. from 120 feet east of S. 82 St. to 365 feet west of S. 84 St.
S. 84 St. from 75 feet north of W. Maple St. to 155 feet south of W. National Ave.,
and portions of intersecting streets
S. 77 St. from W. Grant St. to W. Lincoln Ave.
S. 80 St. from W. Grant St. to 700 feet north of W. Grant St.
W. Oklahoma Ave. Service Dr. from S. 72 St. to S. 74 St.
W. Oklahoma Ave. Service Dr. from S. Stratton Dr. to S. 80 St.

ACCOUNT NO.: P1121S, P1129S, P1130S, P1131S, P1132S

INTEREST RATE: 4.0%

<u>2011 ASSESSMENT RATES</u>	<u>Resid.</u>	<u>Comm.</u>	<u>Mfg.</u>
<u>Streets</u>			
Major Asphalt Resurface, lin. ft.	\$37.93	\$47.41	
Minor Asphalt Resurface, lin. ft.	30.34	37.93	
Service Drive Minor Resurface, lin. ft.	20.23	25.29	

The properties against which the assessments are proposed are benefited.



City of West Allis Engineering Department

Project Details P1121S

W. National Ave. from 120' east of S. 82 St. to 365' west of S. 84 St. and S. 84 St. from 75' north of W. Maple S

Property Assessments

452-0702-000	8118-8122 W NATIONAL AVE	Nancy W. Leiner & James R. Leiner			Commercial	10
	Street Major Asphalt Resurface	47.41 x 33.58 Lin Ft	= \$	1,592.03	100.00	\$ 1,592.03
						Total: \$ 1,592.03
452-0701-000	1736 S 82 ST	Brian R & Karen S Nelson LLC			Commercial	20
	Street Major Asphalt Resurface	47.41 x 73.35 Lin Ft	= \$	3,477.52	100.00	\$ 3,477.52
	Street Major Asphalt Resurface	47.41 x 15.00 Lin Ft	= \$	711.15	40.00	\$ 284.46
	Reduction Code Longside					Total: \$ 3,761.98
452-0611-000	8200 W NATIONAL AVE	N & S Towing Inc			Commercial	30
	Street Major Asphalt Resurface	47.41 x 75.00 Lin Ft	= \$	3,555.75	100.00	\$ 3,555.75
	Street Major Asphalt Resurface	47.41 x 21.00 Lin Ft	= \$	995.61	40.00	\$ 398.24
	Reduction Code Longside					Total: \$ 3,953.99
452-0612-000	8214 W NATIONAL AVE	Charles P. Melk			Commercial	40
	Street Major Asphalt Resurface	47.41 x 85.00 Lin Ft	= \$	4,029.85	100.00	\$ 4,029.85
						Total: \$ 4,029.85
452-0613-005	1750-1752 S 83 ST	Wm J. Bowman			Residential	50
	Street Major Asphalt Resurface	37.93 x 118.00 Lin Ft	= \$	4,475.74	40.00	\$ 1,790.30
	Reduction Code Longside					
	Street Major Asphalt Resurface	37.93 x 15.00 Lin Ft	= \$	568.95	100.00	\$ 568.95
						Total: \$ 2,359.25



City of West Allis Engineering Department

Project Details P1121S

W. National Ave. from 120' east of S. 82 St. to 365' west of S. 84 St. and S. 84 St. from 75' north of W. Maple S

452-0480-001	1759-1761 S 83 ST	Sharon R. Sass				Commercial	60
	Street Major Asphalt Resurface	47.41	x	73.70 Lin Ft	= \$	3,494.12 100.00	\$ 3,494.12
	Street Major Asphalt Resurface	47.41	x	15.00 Lin Ft	= \$	711.15 40.00	\$ 284.46
	Reduction Code Longside						
						Total:	\$ 3,778.58
452-0438-002	1700 Block S 84 ST	West Allis City of				Exempt Local	70
	Street Major Asphalt Resurface	37.93	x	278.33 Lin Ft	= \$	10,557.06 0.00	\$ 0.00
	Reduction Code Longside						
	Exempt Property Charged as Residential						
	Street Major Asphalt Resurface	37.93	x	65.00 Lin Ft	= \$	2,465.45 0.00	\$ 0.00
	Exempt Property Charged as Residential						
						Total:	\$ 0.00
478-9998-004	8440 W NATIONAL AVE	First Municipal Credit Union				Commercial	80
	Street Major Asphalt Resurface	47.41	x	169.35 Lin Ft	= \$	8,028.88 50.00	\$ 4,014.44
	Reduction Code Depth Factor						
	Street Major Asphalt Resurface	47.41	x	189.00 Lin Ft	= \$	8,960.49 100.00	\$ 8,960.49
						Total:	\$12,974.93
478-9998-003	8530-8556 W NATIONAL AVE	Bernhard Schreib & Nancy Schreib				Commercial	90
	Street Major Asphalt Resurface	47.41	x	26.00 Lin Ft	= \$	1,232.66 100.00	\$ 1,232.66
						Total:	\$ 1,232.66
452-0602-000	8113 W NATIONAL AVE	Mel Adams				Commercial	100
	Street Major Asphalt Resurface	47.41	x	17.00 Lin Ft	= \$	805.97 100.00	\$ 805.97
						Total:	\$ 805.97
452-0601-000	8121-8125 W NATIONAL AVE	Benjamin P. Prescher				Commercial	110
	Street Major Asphalt Resurface	47.41	x	46.45 Lin Ft	= \$	2,202.19 100.00	\$ 2,202.19
						Total:	\$ 2,202.19



City of West Allis Engineering Department
 Project Details P1121S

W. National Ave. from 120' east of S. 82 St. to 365' west of S. 84 St. and S. 84 St. from 75' north of W. Maple S

452-9999-004	8100 Block W NATIONAL AVE	West Allis City of				Exempt Local	120
	Street Major Asphalt Resurface		37.93	x	272.80 Lin Ft	= \$ 10,347.30	0.00 \$ 0.00
	Exempt Property Charged as Residential						
						Total:	\$ 0.00
452-9999-008	8333 W NATIONAL AVE	C & NW Transportation Co				Exempt Other	130
	Street Major Asphalt Resurface		37.93	x	471.49 Lin Ft	= \$ 17,883.62	100.00 \$17,883.62
	Exempt Property Charged as Residential						
						Total:	\$17,883.62
478-0029-000	8405 W NATIONAL AVE	West Allis City of				Exempt Local	140
	Street Major Asphalt Resurface		37.93	x	85.80 Lin Ft	= \$ 3,254.39	0.00 \$ 0.00
	Exempt Property Charged as Residential						
	Street Major Asphalt Resurface		37.93	x	87.20 Lin Ft	= \$ 3,307.50	0.00 \$ 0.00
	Reduction Code Longside						
	Exempt Property Charged as Residential						
						Total:	\$ 0.00
478-0030-001	1981 S 84 ST & 8435-8437 W NATIONAL AVE	West Allis City of				Exempt Local	150
	Street Major Asphalt Resurface		37.93	x	243.00 Lin Ft	= \$ 9,216.99	0.00 \$ 0.00
	Exempt Property Charged as Residential						
						Total:	\$ 0.00
477-0472-001	8323 W BURNHAM ST	Paul R. Neymeyr				Residential	160
	Street Major Asphalt Resurface		37.93	x	120.00 Lin Ft	= \$ 4,551.60	40.00 \$ 1,820.64
	Reduction Code Longside						
	Street Major Asphalt Resurface		37.93	x	70.10 Lin Ft	= \$ 2,658.89	100.00 \$ 2,658.89
	Street Major Asphalt Resurface		37.93	x	40.00 Lin Ft	= \$ 1,517.20	100.00 \$ 1,517.20
						Total:	\$ 5,996.73
477-0479-000	1934 S 84 ST	Katherine Lageman				Residential	170
	Street Major Asphalt Resurface		37.93	x	40.00 Lin Ft	= \$ 1,517.20	100.00 \$ 1,517.20
						Total:	\$ 1,517.20



City of West Allis Engineering Department

Project Details P1121S

W. National Ave. from 120' east of S. 82 St. to 365' west of S. 84 St. and S. 84 St. from 75' north of W. Maple S

477-0478-000	1938 S 84 ST	Dolores A. Bentz				Residential	180
	Street Major Asphalt Resurface	37.93	x	40.00 Lin Ft	= \$	1,517.20	100.00 \$ 1,517.20
							Total: \$ 1,517.20
452-0457-000	8406 W MAPLE ST	Lorelei A. Beauprey				Residential	190
	Street Major Asphalt Resurface	37.93	x	10.00 Lin Ft	= \$	379.30	96.25 \$ 365.08
	Reduction Code Depth Factor						
	Street Major Asphalt Resurface	37.93	x	17.00 Lin Ft	= \$	644.81	40.00 \$ 257.92
	Reduction Code Longside						
							Total: \$ 623.00
452-0442-001	1811 S 84 ST	1811 S 84th St LLC				Commercial	200
	Street Major Asphalt Resurface	47.41	x	130.00 Lin Ft	= \$	6,163.30	40.00 \$ 2,465.32
	Reduction Code Longside						
	Street Major Asphalt Resurface	47.41	x	17.00 Lin Ft	= \$	805.97	100.00 \$ 805.97
							Total: \$ 3,271.29
478-9999-000	1900 Block S 84 ST	West Allis City of				Exempt Local	210
	Street Major Asphalt Resurface	37.93	x	28.00 Lin Ft	= \$	1,062.04	0.00 \$ 0.00
	Exempt Property Charged as Residential						
							Total: \$ 0.00

Property Type Summary

10	Commercial
11	Residential



City of West Allis Engineering Department

Project Details P1121S

W. National Ave. from 120' east of S. 82 St. to 365' west of S. 84 St. and S. 84 St. from 75' north of W. Maple S

Item Summary

	Total Quantity		Gross Total	Net Total
<hr/>				
Street				
Major Asphalt Resurface				
Commercial	986.43	Lin Ft	\$46,766.64	\$37,603.47
Residential	2,001.72	Lin Ft	\$75,925.24	\$29,897.00
			<hr/>	<hr/>
			\$122,691.88	\$67,500.47
<hr/>				
Grand Totals			\$122,691.88	\$67,500.47



Property Assessments

477-0534-000	2200 S 77 ST	Vernon J. Wehr & Martha J. Wehr	Residential	10
Street Minor Asphalt Resurface		30.34 x 30.00 Lin Ft = \$	910.20 100.00 \$ 910.20	
			Total: \$ 910.20	
477-0535-000	2204 S 77 ST	Kathleen A. Stauff	Residential	20
Street Minor Asphalt Resurface		30.34 x 30.00 Lin Ft = \$	910.20 100.00 \$ 910.20	
			Total: \$ 910.20	
477-0536-000	2208 S 77 ST	John L. Brunner	Residential	30
Street Minor Asphalt Resurface		30.34 x 40.00 Lin Ft = \$	1,213.60 100.00 \$ 1,213.60	
			Total: \$ 1,213.60	
477-0537-000	2214 S 77 ST	Margaret A. Franzen	Residential	40
Street Minor Asphalt Resurface		30.34 x 40.00 Lin Ft = \$	1,213.60 100.00 \$ 1,213.60	
			Total: \$ 1,213.60	
477-0538-000	2220-2222 S 77 ST	Tomislav Spremo & Dana Spremo	Residential	50
Street Minor Asphalt Resurface		30.34 x 40.00 Lin Ft = \$	1,213.60 100.00 \$ 1,213.60	
			Total: \$ 1,213.60	
477-0539-000	2224 S 77 ST	Charles Megal & Beverly Megal	Residential	60
Street Minor Asphalt Resurface		30.34 x 50.00 Lin Ft = \$	1,517.00 100.00 \$ 1,517.00	
			Total: \$ 1,517.00	
477-0540-000	2232 S 77 ST	Sue Ann Bliven	Residential	70
Street Minor Asphalt Resurface		30.34 x 40.00 Lin Ft = \$	1,213.60 100.00 \$ 1,213.60	
			Total: \$ 1,213.60	
477-0541-000	2236-2238 S 77 ST	Terry L. Needham & Julie A. Needham	Residential	80
Street Minor Asphalt Resurface		30.34 x 45.00 Lin Ft = \$	1,365.30 100.00 \$ 1,365.30	
			Total: \$ 1,365.30	



City of West Allis Engineering Department

Project Details P1129S

S. 77 St. from W. Grant St. to W. Lincoln Ave.

477-0822-001	7606 W LINCOLN AVE	Semandel Investments LLC	Commercial	90
Street Minor Asphalt Resurface		37.93 x 60.90 Lin Ft	= \$ 2,309.94 100.00 \$ 2,309.94	
			Total: \$ 2,309.94	
477-0543-000	2201 S 77 ST	Caleb A. Porter	Residential	100
Street Minor Asphalt Resurface		30.34 x 30.00 Lin Ft	= \$ 910.20 100.00 \$ 910.20	
			Total: \$ 910.20	
477-0544-000	2205 S 77 ST	Saul Hernandez & Angela M. Hernandez	Residential	110
Street Minor Asphalt Resurface		30.34 x 30.00 Lin Ft	= \$ 910.20 100.00 \$ 910.20	
			Total: \$ 910.20	
477-0545-000	2209-2211 S 77 ST	Mark S. Menzia & John J. Menzia	Residential	120
Street Minor Asphalt Resurface		30.34 x 37.50 Lin Ft	= \$ 1,137.75 100.00 \$ 1,137.75	
			Total: \$ 1,137.75	
477-0546-000	2215 S 77 ST	James Middlestead & Susan Middlestead	Residential	130
Street Minor Asphalt Resurface		30.34 x 37.50 Lin Ft	= \$ 1,137.75 100.00 \$ 1,137.75	
			Total: \$ 1,137.75	
477-0547-000	2219-2221 S 77 ST	Elizabeth M. Lenarchich	Residential	140
Street Minor Asphalt Resurface		30.34 x 45.00 Lin Ft	= \$ 1,365.30 100.00 \$ 1,365.30	
			Total: \$ 1,365.30	
477-0548-000	2225 S 77 ST	Melissa Steffen & Jason Steffen	Residential	150
Street Minor Asphalt Resurface		30.34 x 30.00 Lin Ft	= \$ 910.20 100.00 \$ 910.20	
			Total: \$ 910.20	
477-0549-000	2229 S 77 ST	Jason P. Steffen & Melissa M. Steffen	Residential	160
Street Minor Asphalt Resurface		30.34 x 30.00 Lin Ft	= \$ 910.20 100.00 \$ 910.20	
			Total: \$ 910.20	



City of West Allis Engineering Department

Project Details P1129S

S. 77 St. from W. Grant St. to W. Lincoln Ave.

477-0550-001	2233-2235 S 77 ST	Jason Steffen & Melissa Steffen	Residential	170
Street Minor Asphalt Resurface	30.34 x 40.00 Lin Ft	= \$ 1,213.60	100.00	\$ 1,213.60
			Total:	\$ 1,213.60
477-0551-001	2239-2241 S 77 ST	Murra Property Management LLC	Residential	180
Street Minor Asphalt Resurface	30.34 x 50.00 Lin Ft	= \$ 1,517.00	100.00	\$ 1,517.00
			Total:	\$ 1,517.00
477-0552-000	2247 S 77 ST & 7710 W LINCOLN AVE	Lucas Miller Jr	Residential	190
Street Minor Asphalt Resurface	30.34 x 45.90 Lin Ft	= \$ 1,392.61	100.00	\$ 1,392.61
			Total:	\$ 1,392.61

Property Type Summary

1	Commercial
18	Residential

Item Summary

	Total Quantity		Gross Total	Net Total
Street				
Minor Asphalt Resurface				
Commercial	60.90	Lin Ft	\$2,309.94	\$2,309.94
Residential	690.90	Lin Ft	\$20,961.91	\$20,961.91
			<u>\$23,271.85</u>	<u>\$23,271.85</u>
Grand Totals			\$23,271.85	\$23,271.85



City of West Allis Engineering Department

Project Details P1130S

S. 80 St. from W. Grant St. to 700' north of W. Grant St.

Property Assessments

477-0694-000	8003 W BECHER ST	Rubicon Holdings LLC & Robert J. Bakos	Commercial	10
	Street Minor Asphalt Resurface	37.93 x 20.00 Lin Ft	= \$ 758.60 40.00 \$ 303.44	
	Reduction Code Longside			
			Total: \$ 303.44	
477-0695-000	7941 W BECHER ST	Donna J. Dietsche	Residential	20
	Street Minor Asphalt Resurface	30.34 x 40.00 Lin Ft	= \$ 1,213.60 40.00 \$ 485.44	
	Reduction Code Longside			
			Total: \$ 485.44	
477-0696-000	7935 W BECHER ST	Szymborski Gary & Sharon Rev Trust	Residential	30
	Street Minor Asphalt Resurface	30.34 x 18.00 Lin Ft	= \$ 546.12 40.00 \$ 218.45	
	Reduction Code Longside			
			Total: \$ 218.45	
477-0700-000	2114 S 80 ST	Elenor J. Spitzer	Residential	40
	Street Minor Asphalt Resurface	30.34 x 50.00 Lin Ft	= \$ 1,517.00 100.00 \$ 1,517.00	
			Total: \$ 1,517.00	
477-0701-000	2120 S 80 ST	Brian E. Larson	Residential	50
	Street Minor Asphalt Resurface	30.34 x 50.00 Lin Ft	= \$ 1,517.00 100.00 \$ 1,517.00	
			Total: \$ 1,517.00	
477-0702-000	2126-2128 S 80 ST	Benjamin F. Servidas Sr & Myrtle L. Servidas	Residential	60
	Street Minor Asphalt Resurface	30.34 x 50.00 Lin Ft	= \$ 1,517.00 100.00 \$ 1,517.00	
			Total: \$ 1,517.00	
477-0703-000	2132-2134 S 80 ST	Stephen H. Gorski & Lenore J. Krokowski	Residential	70
	Street Minor Asphalt Resurface	30.34 x 50.00 Lin Ft	= \$ 1,517.00 100.00 \$ 1,517.00	
			Total: \$ 1,517.00	



City of West Allis Engineering Department

Project Details P1130S

S. 80 St. from W. Grant St. to 700' north of W. Grant St.

477-0704-000	2138-2140 S 80 ST	Thomas S. Bolton				Residential	80
	Street Minor Asphalt Resurface	30.34 x	50.00 Lin Ft	= \$	1,517.00	100.00	\$ 1,517.00
						Total:	\$ 1,517.00
477-0705-000	2144-2146 S 80 ST	Tilemahos P. Panagiotopoulos & Shelley L. Keger				Residential	90
	Street Minor Asphalt Resurface	30.34 x	50.00 Lin Ft	= \$	1,517.00	100.00	\$ 1,517.00
						Total:	\$ 1,517.00
477-0706-000	2152-2154 S 80 ST	Quest Investmnt Properties LLC				Residential	100
	Street Minor Asphalt Resurface	30.34 x	50.00 Lin Ft	= \$	1,517.00	100.00	\$ 1,517.00
						Total:	\$ 1,517.00
477-0707-000	2156-2158 S 80 ST	Marlin J. Bradway & Marlene Bradway				Residential	110
	Street Minor Asphalt Resurface	30.34 x	50.00 Lin Ft	= \$	1,517.00	100.00	\$ 1,517.00
						Total:	\$ 1,517.00
477-0708-000	2164-2166 S 80 ST	Michael K. Brzycki & Kristi K. Brzycki				Residential	120
	Street Minor Asphalt Resurface	30.34 x	47.00 Lin Ft	= \$	1,425.98	100.00	\$ 1,425.98
						Total:	\$ 1,425.98
477-0709-000	2170 S 80 ST	Sandra J. Windau				Residential	130
	Street Minor Asphalt Resurface	30.34 x	47.52 Lin Ft	= \$	1,441.76	100.00	\$ 1,441.76
						Total:	\$ 1,441.76
477-0710-000	2176 S 80 ST	Max F. Vollmann				Residential	140
	Street Minor Asphalt Resurface	30.34 x	51.30 Lin Ft	= \$	1,556.44	100.00	\$ 1,556.44
						Total:	\$ 1,556.44
477-0711-000	2182 S 80 ST	Richard L. Kantak & Nancy P. Kantak				Residential	150
	Street Minor Asphalt Resurface	30.34 x	50.00 Lin Ft	= \$	1,517.00	100.00	\$ 1,517.00
						Total:	\$ 1,517.00



City of West Allis Engineering Department

Project Details P1130S

S. 80 St. from W. Grant St. to 700' north of W. Grant St.

477-0712-000	2188 S 80 ST	Irma G. Olson				Residential	160
	Street Minor Asphalt Resurface		30.34	x	50.00 Lin Ft	= \$ 1,517.00	100.00 \$ 1,517.00
						Total:	\$ 1,517.00
477-0713-000	7930 W GRANT ST	Richard A. Strangfeld III & Joy P. Schum				Residential	170
	Street Minor Asphalt Resurface		30.34	x	50.00 Lin Ft	= \$ 1,517.00	100.00 \$ 1,517.00
						Total:	\$ 1,517.00
477-0693-000	2115 S 80 ST	Denise L. Ullrich				Residential	180
	Street Minor Asphalt Resurface		30.34	x	57.05 Lin Ft	= \$ 1,730.90	100.00 \$ 1,730.90
						Total:	\$ 1,730.90
477-0692-000	2121 S 80 ST	Casey J. Capra				Residential	190
	Street Minor Asphalt Resurface		30.34	x	47.00 Lin Ft	= \$ 1,425.98	100.00 \$ 1,425.98
						Total:	\$ 1,425.98
477-0691-000	2127 S 80 ST	Jesus E. Guzman				Residential	200
	Street Minor Asphalt Resurface		30.34	x	50.00 Lin Ft	= \$ 1,517.00	100.00 \$ 1,517.00
						Total:	\$ 1,517.00
477-0690-000	2133 S 80 ST	Karyn Ann Ziegler				Residential	210
	Street Minor Asphalt Resurface		30.34	x	50.00 Lin Ft	= \$ 1,517.00	100.00 \$ 1,517.00
						Total:	\$ 1,517.00
477-0689-001	2141 S 80 ST	Mark D. Kraemer & Gena L. Kraemer				Residential	220
	Street Minor Asphalt Resurface		30.34	x	52.00 Lin Ft	= \$ 1,577.68	100.00 \$ 1,577.68
						Total:	\$ 1,577.68
477-0688-000	2145-2147 S 80 ST	Malin Margie M Revoc Trust				Residential	230
	Street Minor Asphalt Resurface		30.34	x	48.00 Lin Ft	= \$ 1,456.32	100.00 \$ 1,456.32
						Total:	\$ 1,456.32



City of West Allis Engineering Department

Project Details P1130S

S. 80 St. from W. Grant St. to 700' north of W. Grant St.

477-0687-000	2151 S 80 ST	Tracie Linn Semanski				Residential	240
	Street Minor Asphalt Resurface	30.34 x	45.00 Lin Ft	= \$	1,365.30	100.00	\$ 1,365.30
						Total:	\$ 1,365.30
477-0686-000	2159 S 80 ST	Don W. Dussault				Residential	250
	Street Minor Asphalt Resurface	30.34 x	55.00 Lin Ft	= \$	1,668.70	100.00	\$ 1,668.70
						Total:	\$ 1,668.70
477-0685-000	2167 S 80 ST	Jane Domacinovich				Commercial	260
	Street Minor Asphalt Resurface	37.93 x	80.00 Lin Ft	= \$	3,034.40	100.00	\$ 3,034.40
						Total:	\$ 3,034.40
477-0684-000	2177 S 80 ST	Thomas Mitchell & Pamela Mitchell				Residential	270
	Street Minor Asphalt Resurface	30.34 x	66.18 Lin Ft	= \$	2,007.90	90.00	\$ 1,807.11
	Reduction Code Rectangularized					Total:	\$ 1,807.11
477-0683-000	2183 S 80 ST	Brian K. Meier & Cynthia Meier				Residential	280
	Street Minor Asphalt Resurface	30.34 x	50.00 Lin Ft	= \$	1,517.00	100.00	\$ 1,517.00
						Total:	\$ 1,517.00
477-0682-000	2189 S 80 ST	Christian T. St Antoine & Holly St Antoine				Residential	290
	Street Minor Asphalt Resurface	30.34 x	50.00 Lin Ft	= \$	1,517.00	100.00	\$ 1,517.00
						Total:	\$ 1,517.00
477-0681-000	8004 W GRANT ST	Robert A. Downs & Nicole M. Downs				Residential	300
	Street Minor Asphalt Resurface	30.34 x	50.00 Lin Ft	= \$	1,517.00	100.00	\$ 1,517.00
						Total:	\$ 1,517.00

Property Type Summary

2	Commercial
28	Residential



Item Summary

	Total Quantity		Gross Total	Net Total
Street				
Minor Asphalt Resurface				
Commercial	100.00	Lin Ft	\$3,793.00	\$3,337.84
Residential	1,374.05	Lin Ft	\$41,688.68	\$40,432.06
			<u>\$45,481.68</u>	<u>\$43,769.90</u>
Grand Totals			\$45,481.68	\$43,769.90



Property Assessments

515-0138-000	3061 S 72 ST	Crystal A. Trahan				Commercial	10
	Service Drive Asphalt Resurface	25.29	x	62.88 Lin Ft	= \$	1,590.24 100.00	\$ 1,590.24
						Total:	\$ 1,590.24
515-0139-000	7210 W OKLAHOMA AVE	James D. Vogt				Commercial	20
	Service Drive Asphalt Resurface	25.29	x	62.88 Lin Ft	= \$	1,590.24 100.00	\$ 1,590.24
						Total:	\$ 1,590.24
515-0284-000	7220 W OKLAHOMA AVE	Arshagouhi Ohanian				Commercial	30
	Service Drive Asphalt Resurface	25.29	x	70.00 Lin Ft	= \$	1,770.30 100.00	\$ 1,770.30
						Total:	\$ 1,770.30
515-0285-000	7230 W OKLAHOMA AVE	Robert Bernhardt				Commercial	40
	Service Drive Asphalt Resurface	25.29	x	70.00 Lin Ft	= \$	1,770.30 100.00	\$ 1,770.30
						Total:	\$ 1,770.30
515-0286-000	7240 W OKLAHOMA AVE	Robert Bernhardt				Commercial	50
	Service Drive Asphalt Resurface	25.29	x	70.00 Lin Ft	= \$	1,770.30 100.00	\$ 1,770.30
						Total:	\$ 1,770.30
515-0287-000	7250 W OKLAHOMA AVE	Michael John Kuzminski				Commercial	60
	Service Drive Asphalt Resurface	25.29	x	70.00 Lin Ft	= \$	1,770.30 100.00	\$ 1,770.30
						Total:	\$ 1,770.30
515-0288-000	7258 W OKLAHOMA AVE	Bosko Dragicevic & Joka Dragicevic				Commercial	70
	Service Drive Asphalt Resurface	25.29	x	70.00 Lin Ft	= \$	1,770.30 100.00	\$ 1,770.30
						Total:	\$ 1,770.30
515-0289-000	7304 W OKLAHOMA AVE	Stevan Rajak & Gordana Rajak				Commercial	80
	Service Drive Asphalt Resurface	25.29	x	70.00 Lin Ft	= \$	1,770.30 100.00	\$ 1,770.30
						Total:	\$ 1,770.30



City of West Allis Engineering Department
 Project Details P1131S
 W. Oklahoma Ave. Service Drive: S. 72 St. to S. 74 St.

515-0290-000	7314 W OKLAHOMA AVE	Rogich Erling J & Sharon A Trust	Commercial	90
Service Drive Asphalt Resurface		25.29 x 70.00 Lin Ft	= \$ 1,770.30 100.00	\$ 1,770.30
				Total: \$ 1,770.30
515-0291-000	7324 W OKLAHOMA AVE	Audi Investments LLC	Commercial	100
Service Drive Asphalt Resurface		25.29 x 70.00 Lin Ft	= \$ 1,770.30 100.00	\$ 1,770.30
				Total: \$ 1,770.30
515-0292-000	7332 W OKLAHOMA AVE	Klewin Virginia A Revoc Trust	Commercial	110
Service Drive Asphalt Resurface		25.29 x 73.82 Lin Ft	= \$ 1,866.91 100.00	\$ 1,866.91
				Total: \$ 1,866.91

Property Type Summary

11 Commercial

Item Summary

	Total Quantity	Gross Total	Net Total
Service Drive Asphalt Resurface Commercial	759.58 Lin Ft	\$19,209.79	\$19,209.79
		<u>\$19,209.79</u>	<u>\$19,209.79</u>
Grand Totals		\$19,209.79	\$19,209.79



Property Assessments

516-0100-000	7814 W OKLAHOMA AVE	Kenneth R. Peszczyński & Rose M. Peszczyński	Residential	10
	Service Drive Asphalt Resurface	20.23 x 60.00 Lin Ft = \$	1,213.80 100.00 \$ 1,213.80	
			Total: \$ 1,213.80	
516-0099-000	7822 W OKLAHOMA AVE	Nancy C. Moore & Susan E. Moore	Residential	20
	Service Drive Asphalt Resurface	20.23 x 60.00 Lin Ft = \$	1,213.80 100.00 \$ 1,213.80	
			Total: \$ 1,213.80	
516-0098-000	7830 W OKLAHOMA AVE	Russell M. Woelffer & June L. Woelffer	Residential	30
	Service Drive Asphalt Resurface	20.23 x 60.00 Lin Ft = \$	1,213.80 100.00 \$ 1,213.80	
			Total: \$ 1,213.80	
516-0097-000	7904 W OKLAHOMA AVE	James A. Dombek & Janet R. Dombek	Residential	40
	Service Drive Asphalt Resurface	20.23 x 60.00 Lin Ft = \$	1,213.80 100.00 \$ 1,213.80	
			Total: \$ 1,213.80	
516-0096-000	7912 W OKLAHOMA AVE	David L. Vanden Busch & Dana M. Vanden Busch	Residential	50
	Service Drive Asphalt Resurface	20.23 x 60.00 Lin Ft = \$	1,213.80 100.00 \$ 1,213.80	
			Total: \$ 1,213.80	
516-0095-000	7920 W OKLAHOMA AVE	Ervin J. Pachucki & Elizabeth J. Pachucki	Residential	60
	Service Drive Asphalt Resurface	20.23 x 60.00 Lin Ft = \$	1,213.80 100.00 \$ 1,213.80	
			Total: \$ 1,213.80	
516-0094-000	7928 W OKLAHOMA AVE	Jeffrey R. Petrus	Residential	70
	Service Drive Asphalt Resurface	20.23 x 60.00 Lin Ft = \$	1,213.80 100.00 \$ 1,213.80	
			Total: \$ 1,213.80	
516-0093-000	7936 W OKLAHOMA AVE	Arthur S. Ulma	Residential	80
	Service Drive Asphalt Resurface	20.23 x 63.61 Lin Ft = \$	1,286.83 100.00 \$ 1,286.83	
			Total: \$ 1,286.83	



City of West Allis Engineering Department

Project Details P1132S

W. Oklahoma Ave. Service Drive: S. 80 St. to S. Stratton Dr.

516-0322-000	8000 W OKLAHOMA AVE	Lee A. Dayne & Valentina Dayne	Residential	90
Service Drive Asphalt Resurface		20.23 x 55.00 Lin Ft	= \$ 1,112.65	100.00 \$ 1,112.65
			Total:	<u>\$ 1,112.65</u>

Property Type Summary

9 Residential

Item Summary

	Total Quantity		Gross Total	Net Total
Service Drive				
Asphalt Resurface				
Residential	538.61	Lin Ft	<u>\$10,896.08</u>	<u>\$10,896.08</u>
			\$10,896.08	\$10,896.08
Grand Totals			\$10,896.08	\$10,896.08