



Peter C. Daniels, P.E.
City Engineer
Engineering Department
pdaniels@westalliswi.gov
414.302.8360

February 19, 2020

Honorable Mayor and Common Council
West Allis, Wisconsin

Dear Mayor and Council Members:

I herewith respectfully submit my report on the assessment of benefits for major asphalt resurfacing, miscellaneous sidewalk repair, miscellaneous driveway repair, storm sewer relay, sanitary sewer relay, water main relay and utility adjustments in:

S. Wollmer Rd. from W. National Ave. to W. Oklahoma Ave.

as directed in Preliminary Resolution No. R-2019-0688, adopted on October 1, 2019.

This report consists of the following schedules attached hereto:

- Schedule A. - Preliminary Plans and Specifications;
- Schedule B. - Estimate of Entire Cost of Proposed Improvements;
- Schedule C. - Schedule of Proposed Assessments Against Each Parcel Affected.

The properties against which the assessments are proposed are benefited.

Respectfully submitted,

Peter C. Daniels, P.E.
City Engineer

/ns
Encs.

PROPOSED IMPROVEMENT OF

S. Wollmer Rd. from W. National Ave. to W. Oklahoma Ave.

by major asphalt resurfacing, miscellaneous sidewalk repair, miscellaneous driveway repair, storm sewer relay, sanitary sewer relay, water main relay and utility adjustments

SCHEDULE "A"

Preliminary Plans & Specifications Attached

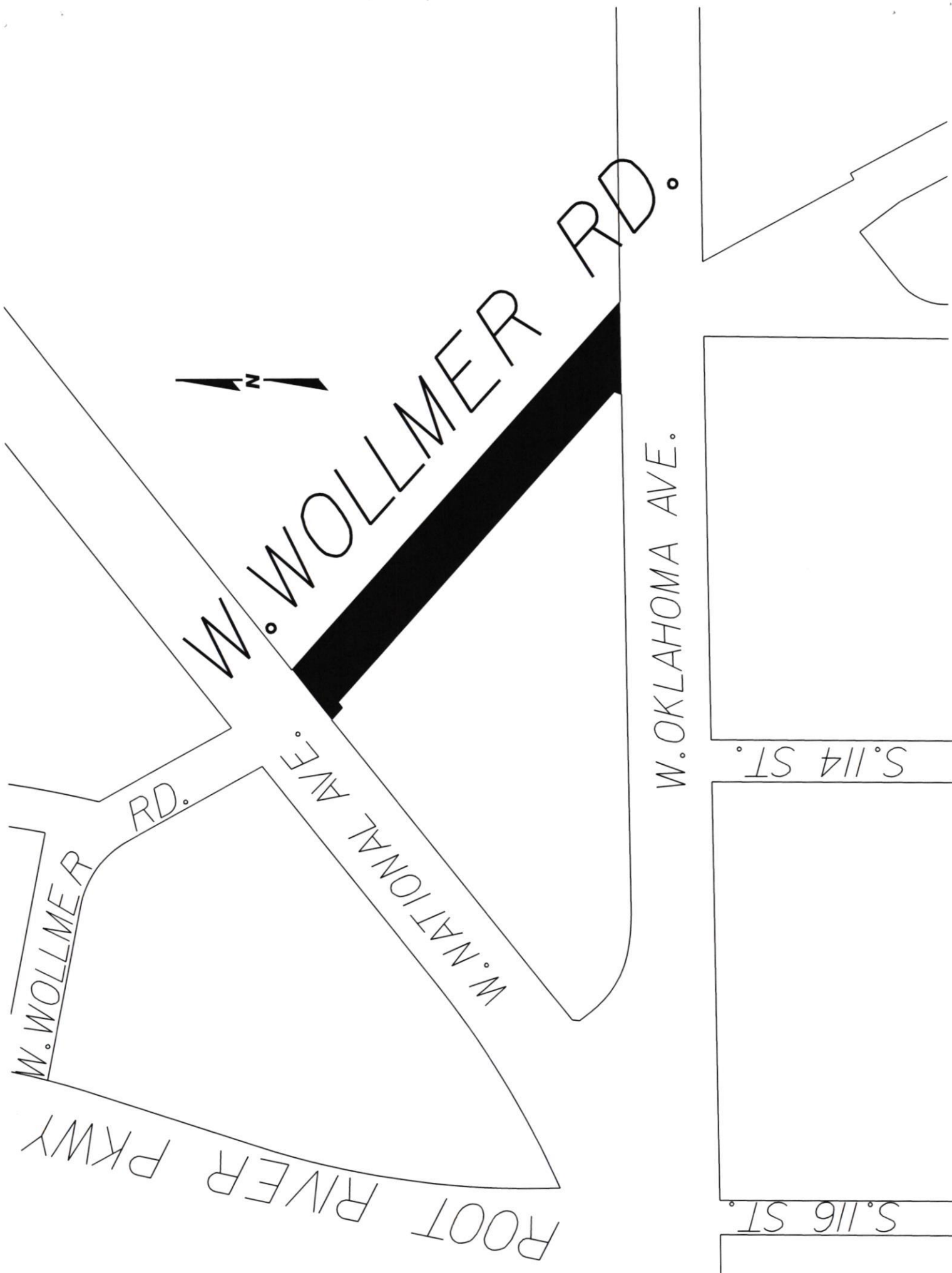
SCHEDULE "B"

Estimate of the Entire Cost

\$131,000

SCHEDULE "C"

Schedule of Proposed Assessments
Against Each Parcel Affected



W. WOLLMER RD.

W. NATIONAL AVE.

W. OKLAHOMA AVE.

S. 114 ST.

S. 116 ST.

W. WOLLMER RD.

ROOT RIVER PKWY



Peter C. Daniels, P.E.
City Engineer
Engineering Department
pdaniels@westalliswi.gov
414.302.8360

February 19, 2020

Board of Public Works
West Allis City Hall
West Allis, Wisconsin

Dear Board Members:

I am herewith submitting preliminary plans and an estimate of costs for the major asphalt resurfacing, miscellaneous sidewalk repair, miscellaneous driveway repair, storm sewer relay, sanitary sewer relay, water main relay and utility adjustments in:

S. Wollmer Rd. from W. National Ave. to W. Oklahoma Ave.

Estimated Construction Cost:	\$ 119,000
Contingency:	12,000
TOTAL:	\$ 131,000

Sincerely,

Peter C. Daniels, P.E.
City Engineer

/ns

ASSESSMENT REPORT FOR COUNCIL

HEARING DATE: February 19, 2020

LOCATION DESCRIPTION: S. Wollmer Rd. from W. National Ave. to W. Oklahoma Ave.

ACCOUNT NO.: P2028S

INTEREST RATE: 4.0%

<u>2020 ASSESSMENT RATES</u>	<u>Resid.</u>	<u>Comm.</u>	<u>Mfg.</u>
<u>Streets</u>			
Major Asphalt Resurface, lin. ft.	\$51.85	\$64.81	\$77.77

The properties against which the assessments are proposed are benefited



City of West Allis Engineering Department
 Project Details P2028S

S. Wollmer Rd. from W. National Ave. to W. Oklahoma Ave.

Property Assessments

520-0155-004	11102 W OKLAHOMA AVE	H.O.L.I.E. Of West Allis & c/o Becker Property S	10
Street Major Asphalt Resurface	51.85 x 3.60 Lin Ft	Exempt Other	186.66
Exempt Property Charged as Residential			\$ 186.66
		Total:	\$ 186.66
520-9965-028	11333 W NATIONAL AVE - 3030 S WOLLMER RD	Aurora Health Care, Inc.	20
Street Major Asphalt Resurface	64.81 x 86.00 Lin Ft	Commercial	5,573.66
Reduction Code Longside			\$ 2,229.46
Street Major Asphalt Resurface	64.81 x 478.69 Lin Ft		\$ 31,023.90
		Total:	\$33,253.36
520-9969-004	11220 W OKLAHOMA AVE	Guardian Credit Union	30
Street Major Asphalt Resurface	64.81 x 98.44 Lin Ft	Commercial	6,379.90
Reduction Code Longside			\$ 2,551.96
Street Major Asphalt Resurface	64.81 x 283.80 Lin Ft		\$ 18,393.08
		Total:	\$20,945.04
520-1003-000	11400 W OKLAHOMA AVE	Weather Tight Prop Mgmt Group LLC	40
Street Major Asphalt Resurface	64.81 x 100.00 Lin Ft	Commercial	6,481.00
		Total:	\$ 6,481.00
520-9971-000	11401-03 W NATIONAL AVE	Gilbert F Frenn & Jaime L Frenn	50
Street Major Asphalt Resurface	64.81 x 91.00 Lin Ft	Commercial	5,897.71
Reduction Code Longside			\$ 2,359.08
		Total:	\$ 2,359.08

Property Type Summary

4	Commercial
1	Residential



City of West Allis Engineering Department
Project Details P2028S

S. Wollmer Rd. from W. National Ave. to W. Oklahoma Ave.

Item Summary

Street	Total Quantity	Gross Total	Net Total
Major Asphalt Resurface			
Commercial	1,137.93 Lin Ft	\$73,749.25	\$63,038.48
Residential	3.60 Lin Ft	\$186.66	\$186.66
		<u>\$73,935.91</u>	<u>\$63,225.14</u>
Grand Totals		\$73,935.91	\$63,225.14