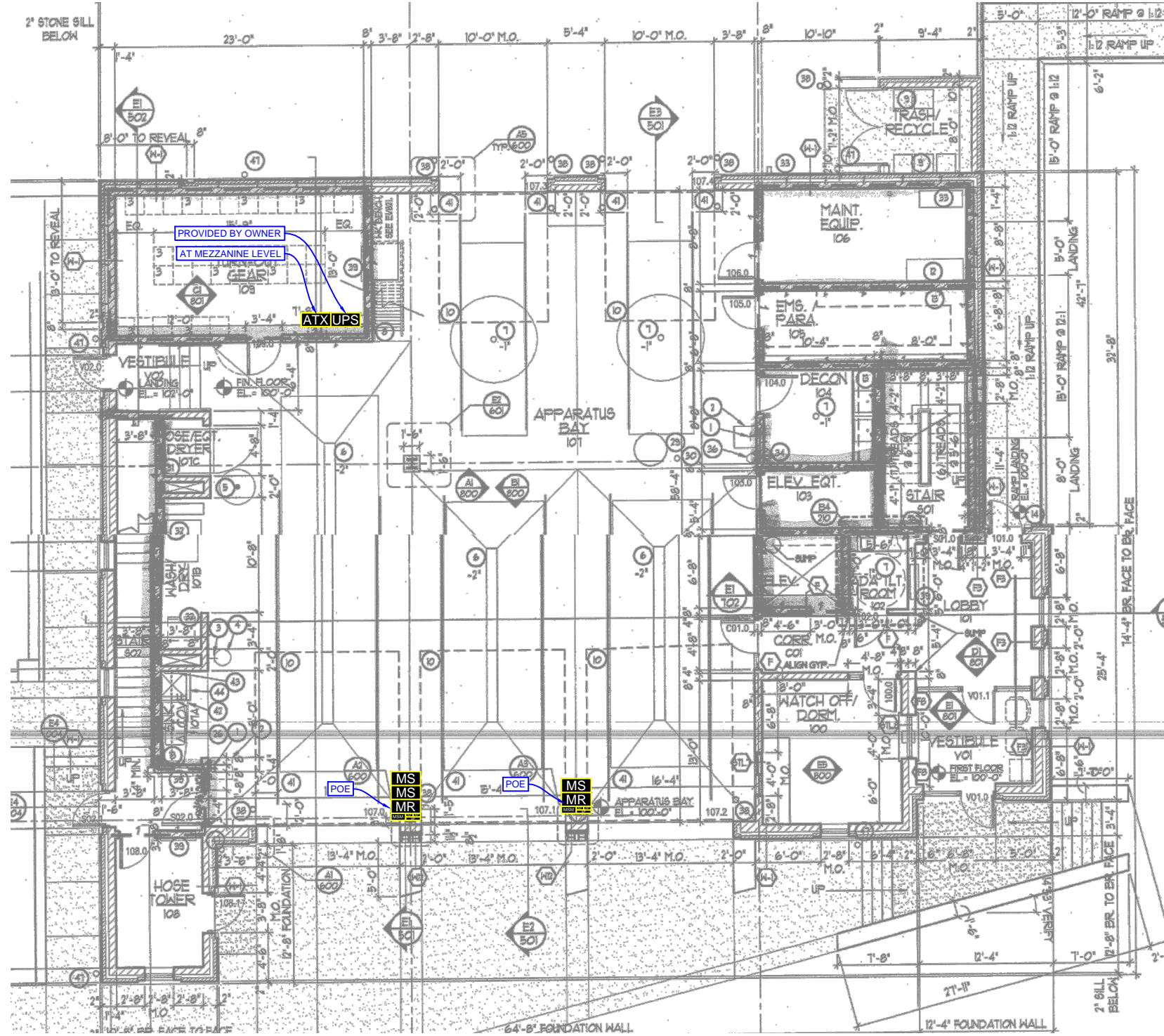
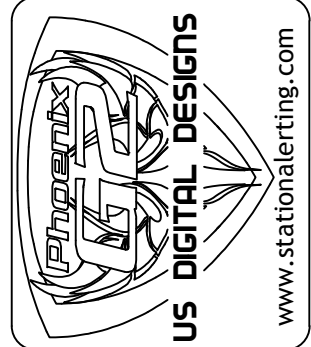


- NOTES:
1. SEE ARCHITECTURAL SPECIFICATIONS FOR ALL ROUGH-IN AND INSTALLATION DETAILS.
  2. US DIGITAL DESIGNS DOES NOT SUPPLY BACK BOXES, CONDUITS, OR MOUNTING FASTENERS.
  3. US DIGITAL DESIGNS FIRE STATION ALERTING PLANS ARE DIAGRAMMATIC AND FOR QUOTING PURPOSES ONLY. DRAWING MAY NOT BE TO SCALE.

US DIGITAL DESIGNS	
Count	Name
1	G2 ATX STATION CONTROLLER
1	G2 HDTV REMOTE
3	G2 MESSAGE REMOTE (G2-MR)
3	G2 MESSAGE SIGN (G2-MS)
4	MS ADAPTOR PLATE - V100 (MS-ADPT-V100)
2	MS MOUNT (MS-MNT-ART-S)
2	MS TIE STRAPS - PAIR (MS-ADPT-STRP)

SYMBOL	DESCRIPTION
ATX	G2 ATX STATION CONTROLLER
G2	PHOENIX G2 STATION CONTROLLER
EXP	G2 EXPANSION MODULE
I/O	G2 I/O REMOTE
MR	G2 MESSAGE REMOTE
MS	G2 MESSAGE SIGN
RR	G2 ROOM REMOTE
SR	G2 SIGN REMOTE
HDT	G2 HDTV REMOTE
CIR	G2 COLOR INDICATOR REMOTE
	G2 LED SPEAKER, FLUSH MOUNT
	G2 LED SPEAKER, METAL BOX
PB	OEM PUSH BUTTON
STR	OEM STROBE LIGHT
AMP	OEM AMPLIFIER
T	OEM TRANSFORMER
	SPEAKER, WEATHER-PROOF
	SPEAKER, FLUSH MOUNT
	SPEAKER, METAL BOX



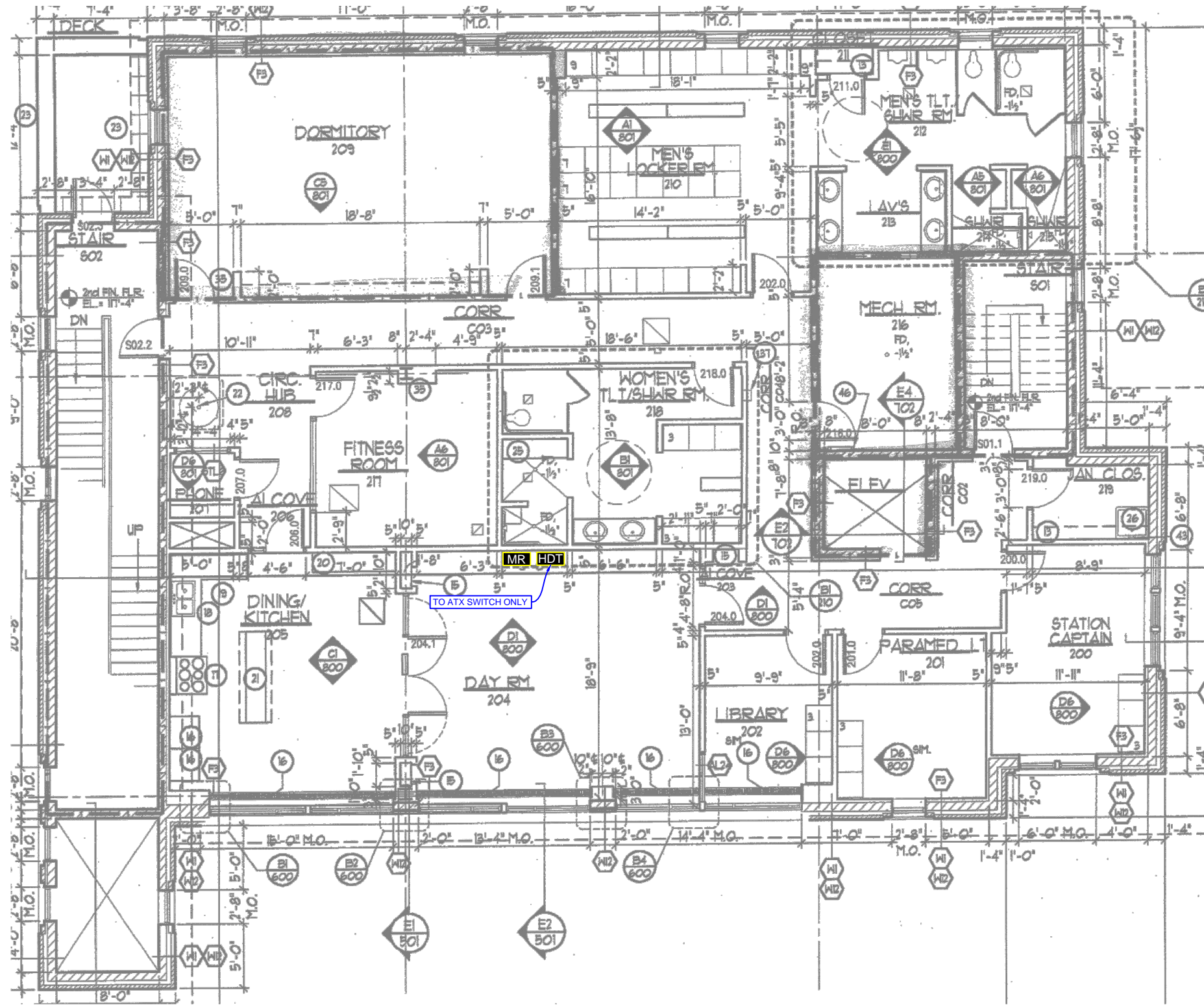
POE = USDD devices requiring POE may be connected to G2 ATX Power-Over-Ethernet port 1-8, or G2 Expansion Module(s) ports 1-12.  
 A.n = G2 ATX Amplifier 1...4  
 EA.n = G2 External Amplifier 1...n  
 N.n = Note 4...99

project **WEST ALLIS FIRE STATION (WI)**  
 building **FS01 FIRST FLOOR**  
 filename **USDD.WAW.FS01.DWG**  
 date **27 FEB 2017**

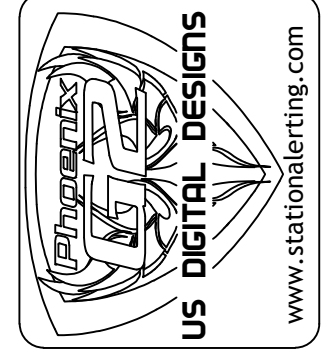
design by **JB, JA**



- NOTES:
1. SEE ARCHITECTURAL SPECIFICATIONS FOR ALL ROUGH-IN AND INSTALLATION DETAILS.
  2. US DIGITAL DESIGNS DOES NOT SUPPLY BACK BOXES, CONDUITS, OR MOUNTING FASTENERS.
  3. US DIGITAL DESIGNS FIRE STATION ALERTING PLANS ARE DIAGRAMMATIC AND FOR QUOTING PURPOSES ONLY. DRAWING MAY NOT BE TO SCALE.



SYMBOL	DESCRIPTION
ATX	G2 ATX STATION CONTROLLER
G2	PHOENIX G2 STATION CONTROLLER
EXP	G2 EXPANSION MODULE
I/O	G2 I/O REMOTE
MR	G2 MESSAGE REMOTE
MS	G2 MESSAGE SIGN
RR	G2 ROOM REMOTE
SR	G2 SIGN REMOTE
HDT	G2 HDTV REMOTE
CIR	G2 COLOR INDICATOR REMOTE
S	G2 LED SPEAKER, FLUSH MOUNT
S	G2 LED SPEAKER, METAL BOX
PB	OEM PUSH BUTTON
STR	OEM STROBE LIGHT
AMP	OEM AMPLIFIER
T	OEM TRANSFORMER
S	SPEAKER, WEATHER-PROOF
S	SPEAKER, FLUSH MOUNT
S	SPEAKER, METAL BOX



www.stationalerting.com

WEST ALLIS FIRE STATION (WI)  
 FS01 SECOND FLOOR  
 USDD.WAW.FS01.DWG

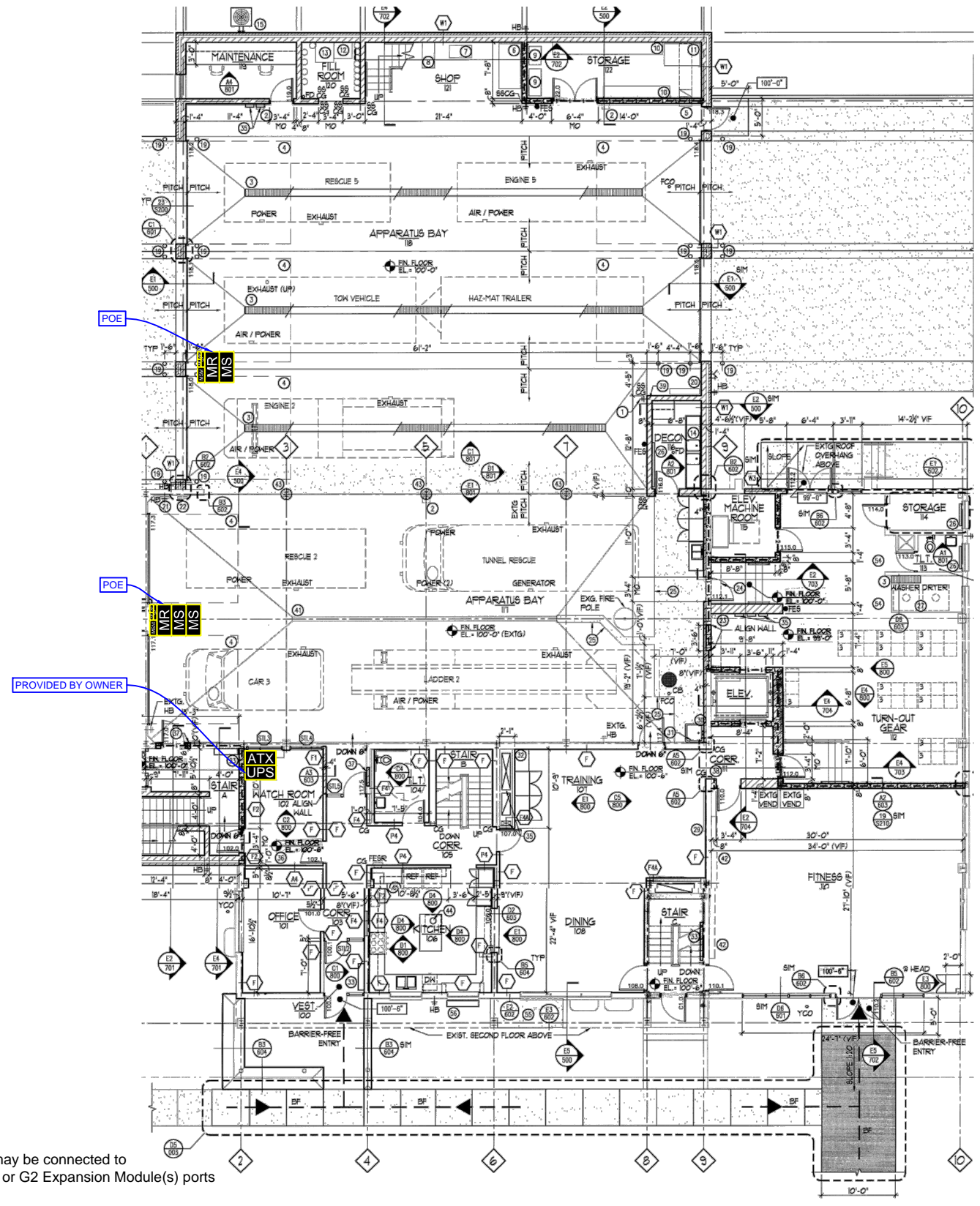
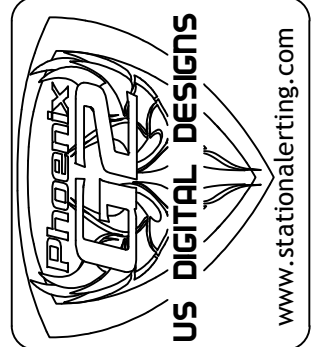
project  
 building  
 filename  
 date 27 FEB 2017

POE = USDD devices requiring POE may be connected to G2 ATX Power-Over-Ethernet port 1-8, or G2 Expansion Module(s) ports 1-12.  
 A.n = G2 ATX Amplifier 1...4  
 EA.n = G2 External Amplifier 1...n  
 N.n = Note 4...99

- NOTES:
1. SEE ARCHITECTURAL SPECIFICATIONS FOR ALL ROUGH-IN AND INSTALLATION DETAILS.
  2. US DIGITAL DESIGNS DOES NOT SUPPLY BACK BOXES, CONDUITS, OR MOUNTING FASTENERS.
  3. US DIGITAL DESIGNS FIRE STATION ALERTING PLANS ARE DIAGRAMMATIC AND FOR QUOTING PURPOSES ONLY. DRAWING MAY NOT BE TO SCALE.

US DIGITAL DESIGNS	
Count	Name
1	G2 ATX STATION CONTROLLER
1	G2 HDTV REMOTE
3	G2 MESSAGE REMOTE (G2-MR)
3	G2 MESSAGE SIGN (G2-MS)
4	MS ADAPTOR PLATE - V100 (MS-ADPT-V100)
2	MS MOUNT (MS-MNT-ART-S)
2	MS TIE STRAPS - PAIR (MS-ADPT-STRP)

SYMBOL	DESCRIPTION
ATX	G2 ATX STATION CONTROLLER
G2	PHOENIX G2 STATION CONTROLLER
EXP	G2 EXPANSION MODULE
I/O	G2 I/O REMOTE
MR	G2 MESSAGE REMOTE
MS	G2 MESSAGE SIGN
RR	G2 ROOM REMOTE
SR	G2 SIGN REMOTE
HDT	G2 HDTV REMOTE
CIR	G2 COLOR INDICATOR REMOTE
	G2 LED SPEAKER, FLUSH MOUNT
	G2 LED SPEAKER, METAL BOX
PB	OEM PUSH BUTTON
STR	OEM STROBE LIGHT
AMP	OEM AMPLIFIER
T	OEM TRANSFORMER
	SPEAKER, WEATHER-PROOF
	SPEAKER, FLUSH MOUNT
	SPEAKER, METAL BOX



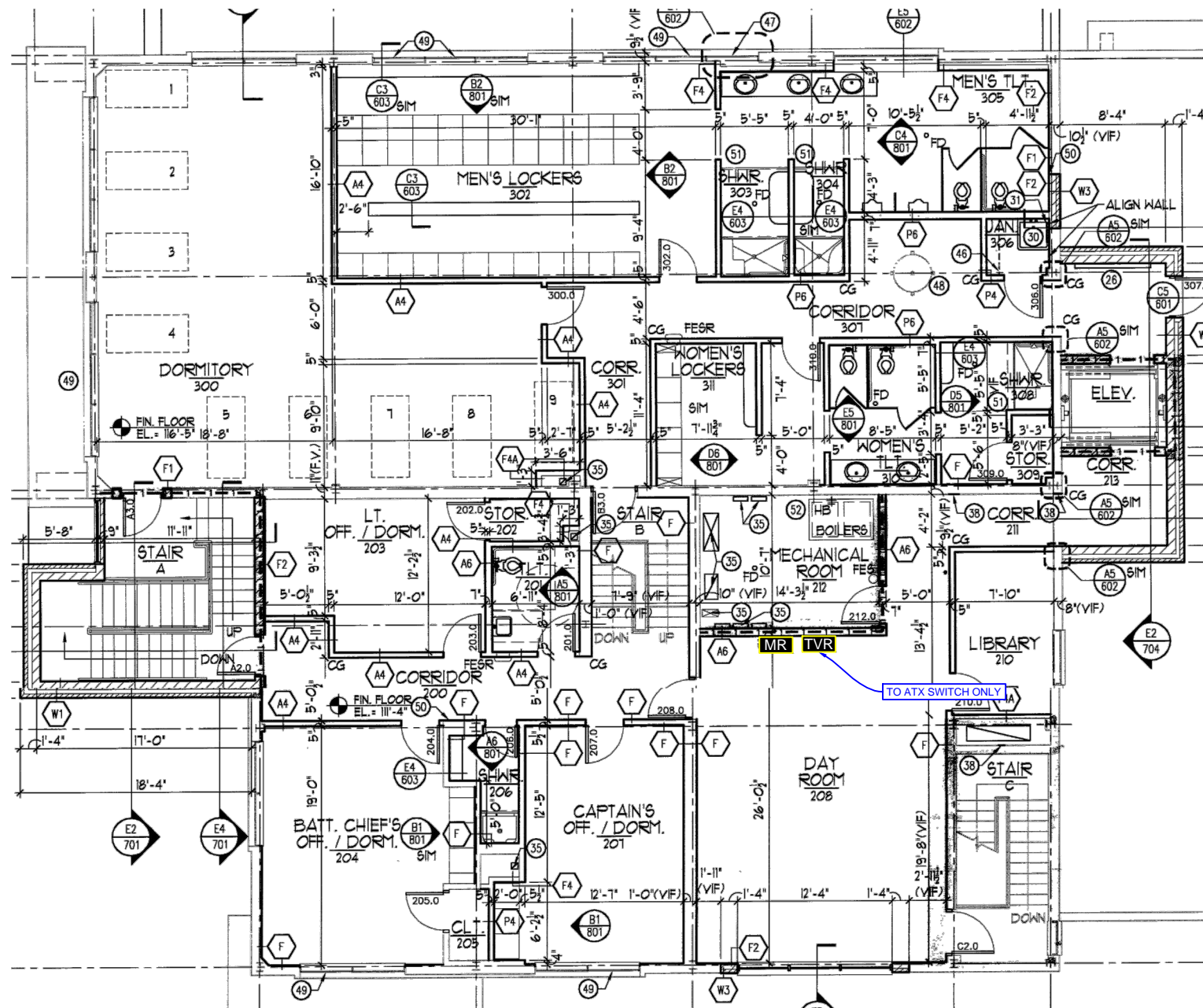
POE = USDD devices requiring POE may be connected to G2 ATX Power-Over-Ethernet port 1-8, or G2 Expansion Module(s) ports 1-12.  
 A.n = G2 ATX Amplifier 1...4  
 EA.n = G2 External Amplifier 1...n  
 N.n = Note 4...99

project	WEST ALLIS FIRE STATION (WI)
building	FS02 FIRST FLOOR
filename	USDD.WAW.FS02.DWG
date	27 FEB 2017

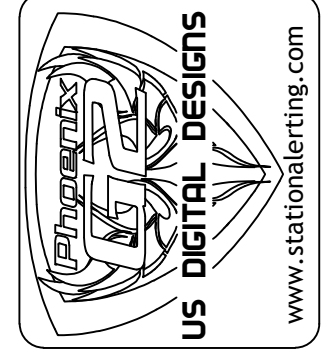
design by  
JB, JA



- NOTES:
1. SEE ARCHITECTURAL SPECIFICATIONS FOR ALL ROUGH-IN AND INSTALLATION DETAILS.
  2. US DIGITAL DESIGNS DOES NOT SUPPLY BACK BOXES, CONDUITS, OR MOUNTING FASTENERS.
  3. US DIGITAL DESIGNS FIRE STATION ALERTING PLANS ARE DIAGRAMMATIC AND FOR QUOTING PURPOSES ONLY. DRAWING MAY NOT BE TO SCALE.



SYMBOL	DESCRIPTION
[ATX]	G2 ATX STATION CONTROLLER
[G2]	PHOENIX G2 STATION CONTROLLER
[EXP]	G2 EXPANSION MODULE
[I/O]	G2 I/O REMOTE
[MR]	G2 MESSAGE REMOTE
[MS]	G2 MESSAGE SIGN
[RR]	G2 ROOM REMOTE
[SR]	G2 SIGN REMOTE
[HDT]	G2 HDTV REMOTE
[CIR]	G2 COLOR INDICATOR REMOTE
[S]	G2 LED SPEAKER, FLUSH MOUNT
[S]	G2 LED SPEAKER, METAL BOX
[PB]	OEM PUSH BUTTON
[STR]	OEM STROBE LIGHT
[AMP]	OEM AMPLIFIER
[T]	OEM TRANSFORMER
[S]	SPEAKER, WEATHER-PROOF
[S]	SPEAKER, FLUSH MOUNT
[S]	SPEAKER, METAL BOX



POE = USDD devices requiring POE may be connected to G2 ATX Power-Over-Ethernet port 1-8, or G2 Expansion Module(s) ports 1-12.  
 A.n = G2 ATX Amplifier 1...4  
 EA.n = G2 External Amplifier 1...n  
 N.n = Note 4...99

**WEST ALLIS FIRE STATION (WI)**  
**FS02 SECOND FLOOR**  
**USDD.WAW.FS02.DWG**

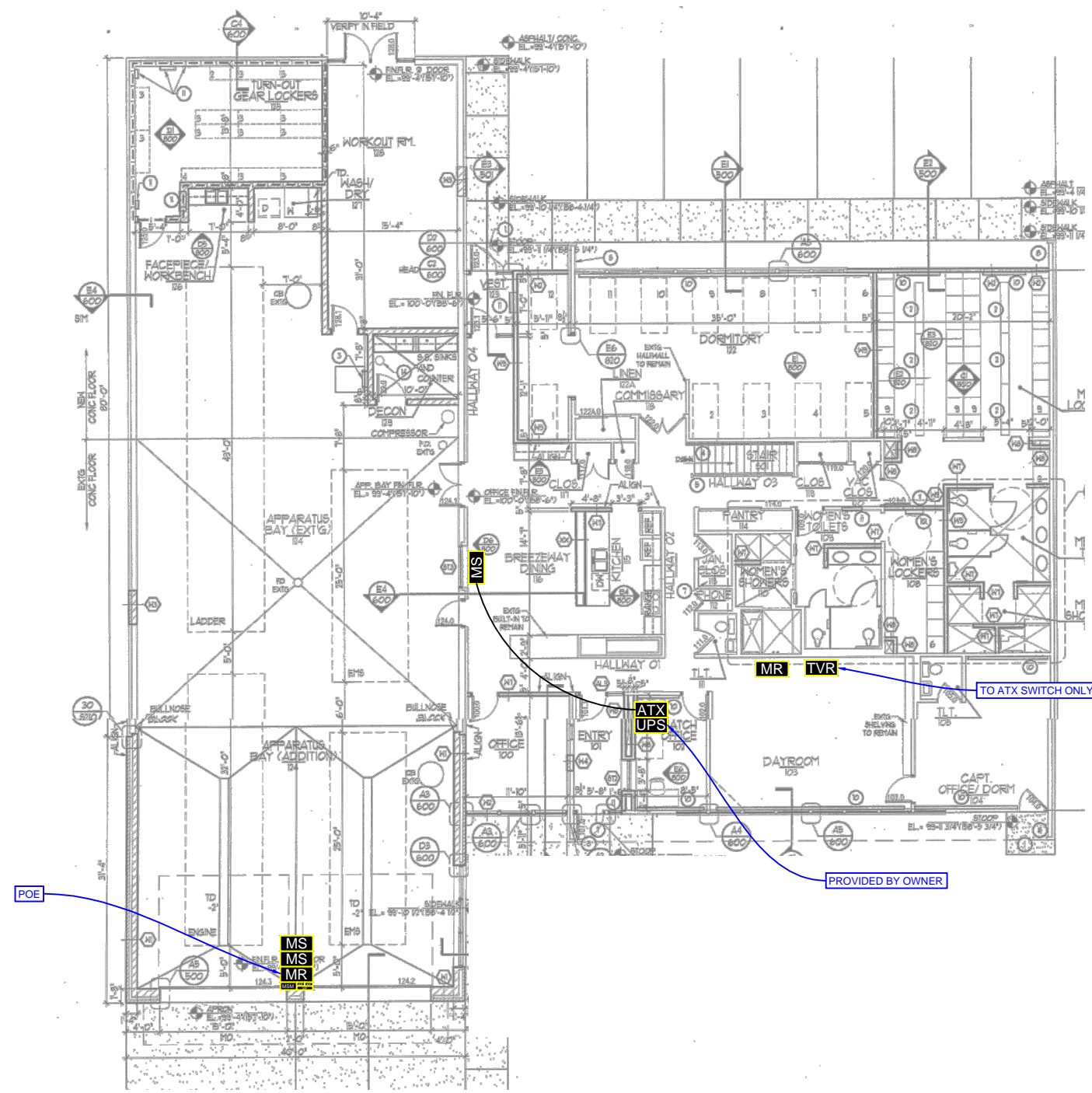
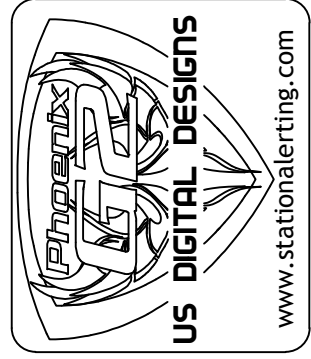
project	WEST ALLIS FIRE STATION (WI)
building	FS02 SECOND FLOOR
filename	USDD.WAW.FS02.DWG
date	27 FEB 2017

design by  
 JB, JA

- NOTES:
1. SEE ARCHITECTURAL SPECIFICATIONS FOR ALL ROUGH-IN AND INSTALLATION DETAILS.
  2. US DIGITAL DESIGNS DOES NOT SUPPLY BACK BOXES, CONDUITS, OR MOUNTING FASTENERS.
  3. US DIGITAL DESIGNS FIRE STATION ALERTING PLANS ARE DIAGRAMMATIC AND FOR QUOTING PURPOSES ONLY. DRAWING MAY NOT BE TO SCALE.

US DIGITAL DESIGNS	
Count	Name
1	G2 ATX STATION CONTROLLER
1	G2 HDTV REMOTE
2	G2 MESSAGE REMOTE (G2-MR)
3	G2 MESSAGE SIGN (G2-MS)
2	MS ADAPTOR PLATE - V100 (MS-ADPT-V100)
1	MS MOUNT (MS-MNT-ART-S)
1	MS TIE STRAPS - PAIR (MS-ADPT-STRP)

SYMBOL	DESCRIPTION
ATX	G2 ATX STATION CONTROLLER
G2	PHOENIX G2 STATION CONTROLLER
EXP	G2 EXPANSION MODULE
I/O	G2 I/O REMOTE
MR	G2 MESSAGE REMOTE
MS	G2 MESSAGE SIGN
RR	G2 ROOM REMOTE
SR	G2 SIGN REMOTE
HDT	G2 HDTV REMOTE
CIR	G2 COLOR INDICATOR REMOTE
	G2 LED SPEAKER, FLUSH MOUNT
	G2 LED SPEAKER, METAL BOX
PB	OEM PUSH BUTTON
STR	OEM STROBE LIGHT
AMP	OEM AMPLIFIER
T	OEM TRANSFORMER
	SPEAKER, WEATHER-PROOF
	SPEAKER, FLUSH MOUNT
	SPEAKER, METAL BOX



POE = USDD devices requiring POE may be connected to G2 ATX Power-Over-Ethernet port 1-8, or G2 Expansion Module(s) ports 1-12.  
 A.n = G2 ATX Amplifier 1...4  
 EA.n = G2 External Amplifier 1...n  
 N.n = Note 4...99

project	WEST ALLIS FIRE STATION (WI)
building	FS03
filename	USDD.WAW.FS03.DWG
date	27 FEB 2017
design by	JB