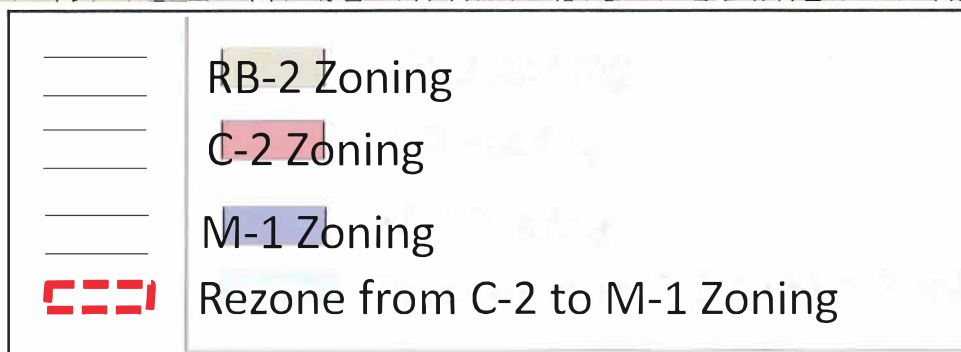
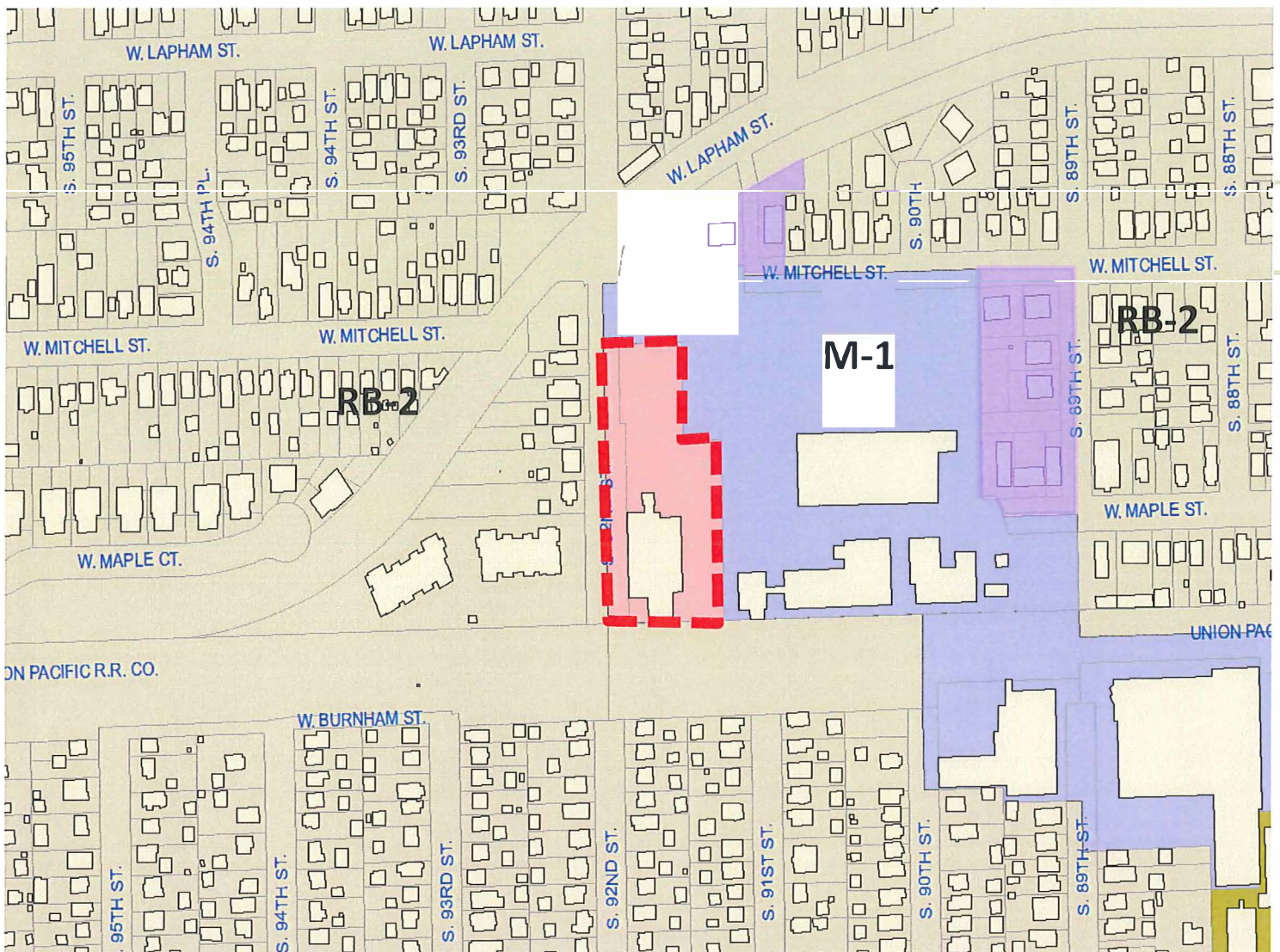


Area Map indicating requested Rezoning Map Amendment

Ordinance to amend the Official West Allis Zoning Map by rezoning the property located at 1800 S. 92 St. from C-2, Neighborhood Commercial District to M-1, Manufacturing District submitted by Chr. Hansen (Tax Key No. 451-1002-000).



Area Map indicating requested Land Use Map Amendment

Ordinance to amend the Future Land Use Map within the City's Comprehensive Plan (Chapter 10 Land Use) from "Commercial" to "Industrial and Office" land use classification for property located at 1800 S. 92 St. submitted by Chr. Hansen (Tax Key No. 451-1002-000).

