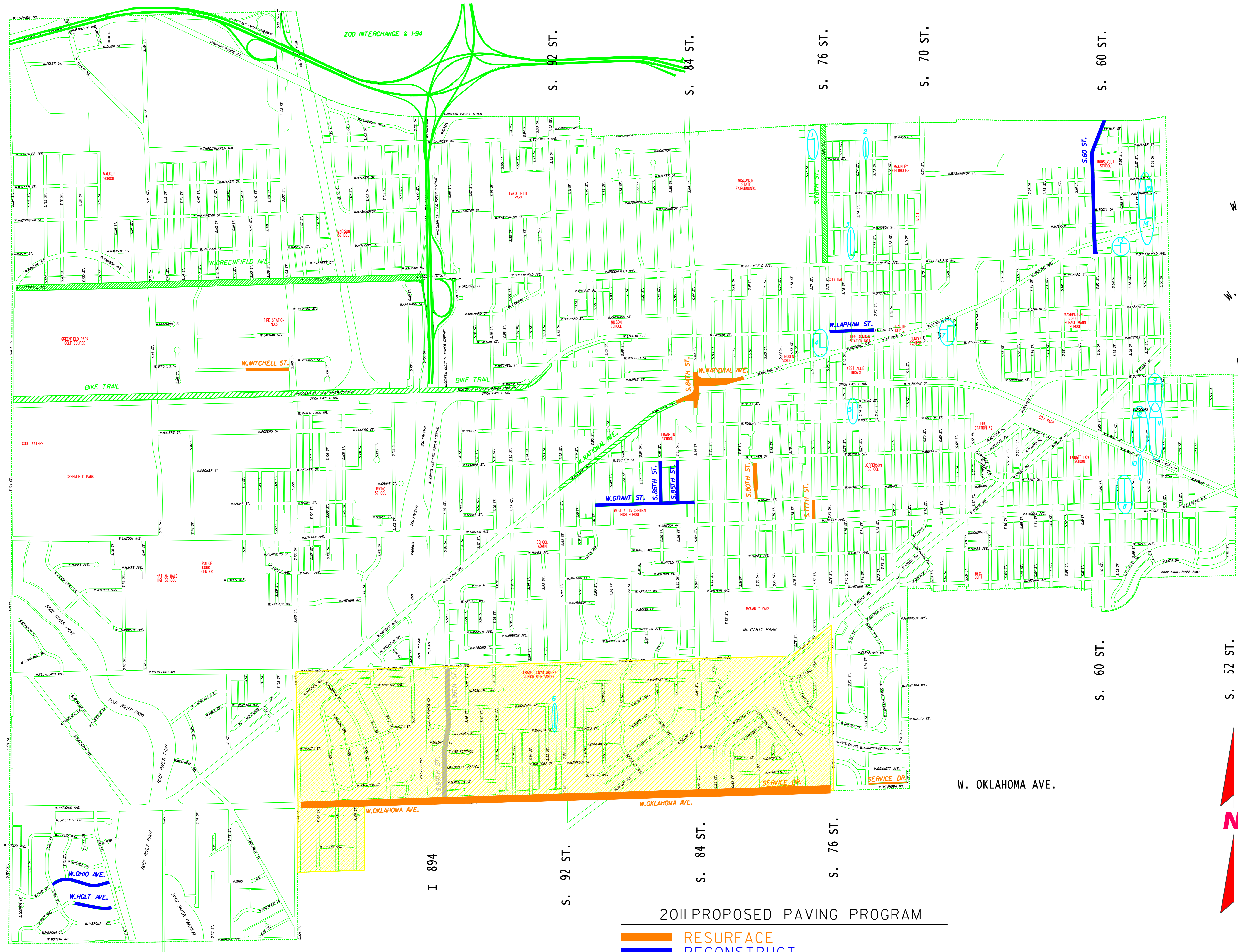


W. FAIRVIEW AVE.
 W. GREENFIELD AVE.
 UNION PACIFIC R.R.
 W. LINCOLN AVE.
 W. CLEVELAND AVE.
 W. OKLAHOMA AVE.
 W. MORGAN AVE.



W. NATIONAL AVE.
 W. BELOIT AVE.
 W. BURNHAM ST.
 W. LINCOLN AVE.

S. 124 ST.
 S. 116 ST.
 S. 108 ST.

I 894

S. 92 ST.
 S. 84 ST.
 S. 76 ST.
 S. 70 ST.
 S. 60 ST.
 S. 60 ST.
 S. 52 ST.

2011 PROPOSED PAVING PROGRAM

- RESURFACE
- RECONSTRUCT
- ALLEY RECONSTRUCT
- INTERIM RESURFACE
- WALK PROGRAM
- ENGINEERING ONLY
- CONCRETE PAVEMENT REPAIR



2011 PROPOSED PAVING PROGRAM