

R/W PROJECT NUMBER 1090-07-23	SHEET NUMBER 4.1	TOTAL SHEETS 2
FEDERAL PROJECT NUMBER		
PLAT OF RIGHT-OF-WAY REQUIRED FOR I-894/US 45 (ZOO FREEWAY)		
CONSTRUCTION PROJECT NUMBER 1090-07-73, 1100-03-79		

**CONVENTIONAL ABBREVIATIONS**

ACCESS POINT/ DRIVEWAY CONNECTION	AP	REFERENCE LINE	R/L
ACCESS RIGHTS	AR	RELEASE OF RIGHTS	ROR
ACRES	AC.	REMAINING	REM.
AND OTHERS	ET. AL.	RIGHT-OF-WAY	R/W
CENTERLINE	C/L	SECTION	SEC.
CERTIFIED SURVEY MAP	CSM	STATION	STA.
CORNER	COR.	TEMPORARY LIMITED EASEMENT	TLE
DOCUMENT	DOC.	VOLUME	V.
EASEMENT	EASE.	<b>CURVE DATA</b>	
HIGHWAY EASEMENT	H.E.	LONG CHORD	LOH
LAND CONTRACT	LC	LONG CHORD BEARING	LCB
MONUMENT	MON.	RADIUS	R
PAGE	P.	DEGREE OF CURVE	D
PERMANENT LIMITED EASEMENT	PLE	CENTRAL ANGLE OR DELTA	DELTA
PROPERTY LINE	PL	LENGTH OF CURVE	L
RECORDED AS	(100)	TANGENT	TAN

**CONVENTIONAL SYMBOLS**

FOUND IRON PIPE/PIN	(IF UNLESS NOTED)	PROPOSED R/W LINE	—————
R/W MONUMENT	○ (SET)	EXISTING H.E. LINE	—————
R/W STANDARD	△ (SET)	PROPERTY LINE	—————
SIGN	ISIGN	LOT & TIE LINES	—————
SECTION CORNER MONUMENT	●	SLOPE INTERCEPTS	//////
SECTION CORNER SYMBOL	⊙	CORPORATE LIMITS	—————
FEE (HATCH VARIES)		ACCESS RESTRICTED (BY PREVIOUS ACQUISITION/CONTROL)	●●●●●
TEMPORARY LIMITED EASEMENT		ACCESS RESTRICTED (BY ACQUISITION)	
PERMANENT LIMITED EASEMENT		NO ACCESS (BY STATUTORY AUTHORITY)	●●●●●
R/W BOUNDARY POINT	⊙	SECTION LINE	—————
PARCEL NUMBER	⊙	QUARTER LINE	—————
UTILITY PARCEL NUMBER	⊙	SIXTEENTH LINE	—————
SIGN NUMBER (OFF PREMISE)	⊙	EXISTING CENTERLINE	—————
BUILDING	⊙	PROPOSED REFERENCE LINE	—————
		PARALLEL OFFSET	—————

**CONVENTIONAL UTILITY SYMBOLS**

WATER	—W—	NON COMPENSABLE	—
GAS	—G—	COMPENSABLE	—
TELEPHONE	—T—		
OVERHEAD	—OH—		
TRANSMISSION LINES	—E—		
ELECTRIC	—E—		
CABLE TELEVISION	—TV—		
FIBER OPTIC	—FO—		
SANITARY SEWER	—SAN—		
STORM SEWER	—SS—		
POWER POLE	⊙		
TELEPHONE POLE	⊙		
TELEPHONE PEDESTAL	⊙		
ELECTRIC TOWER	⊙		

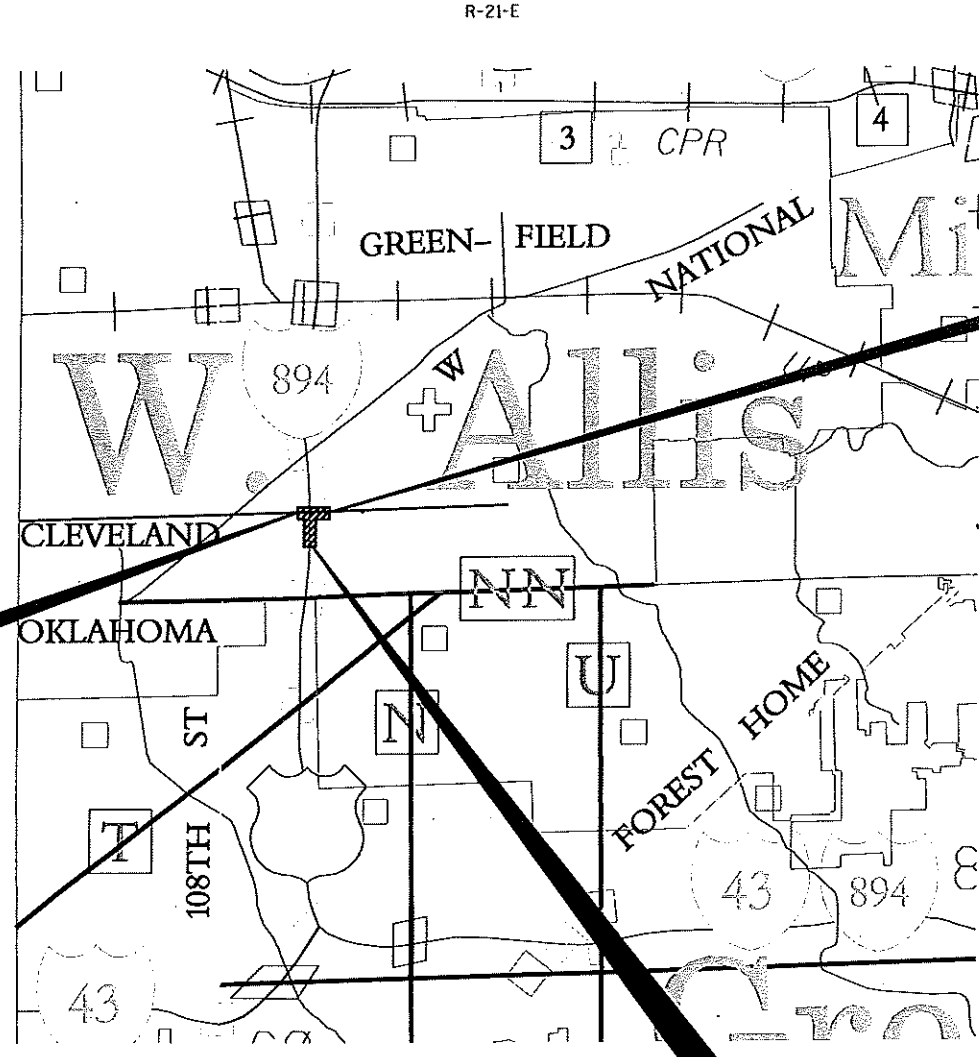
**NOTES**

COORDINATES AND BEARINGS ON THIS PLAT ARE ORIENTED TO THE WISCONSIN COUNTY COORDINATE SYSTEM, MILWAUKEE COUNTY ZONE, NAD 83 (2007) ADJUSTMENT. THE COORDINATES SHOWN ARE GRID COORDINATES AND ARE TO BE USED AS GRID OR GROUND VALUES ON THIS PLAT.

RIGHT-OF-WAY MONUMENTS ARE TYPE 2 (TYPICAL 3/4" REBAR) AND WILL BE PLACED PRIOR TO THE COMPLETION OF THE PROJECT BY SE REGION DOT SURVEY.

RIGHT-OF-WAY BOUNDARIES ARE DEFINED WITH COURSES OF THE PERIMETER OF THE HIGHWAY LANDS REFERENCED TO THE U.S. PUBLIC LAND SURVEY SYSTEM OR OTHER SURVEYS OF PUBLIC RECORD.

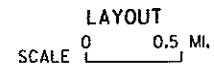
FOR THE LATEST ACCESS/DRIVEWAY INFORMATION, CONTACT THE PLANNING UNIT OF THE WISCONSIN DEPARTMENT OF TRANSPORTATION OFFICE IN WAUKESHA.



**BEGIN RELOCATION ORDER**  
STATION 45+00 CLEVELAND AVENUE  
4.25' SOUTH OF AND 500.01' WEST OF THE CENTER OF SEC 8, T6N, R21E

**END RELOCATION ORDER**  
STATION 51+20 CLEVELAND AVENUE  
1.04' NORTH OF AND 119.96' EAST OF THE CENTER OF SEC 8, T6N, R21E

**SOUTH LIMITS**  
STATION 21+10.81 DAKOTA STREET PEDESTRIAN BRIDGE  
1147.70' SOUTH OF AND 3.68' EAST OF THE CENTER OF SEC 8, T6N, R21E



TOTAL NET LENGTH OF CENTERLINE = 0.117 MI.



ORIGINAL PLANS PREPARED BY



(Date) (Signature)

STATE OF WISCONSIN  
DEPARTMENT OF TRANSPORTATION

APPROVED FOR THE DEPARTMENT  
DATE: 10-12-12 (Signature)

E

**SCHEDULE OF LANDS AND INTERESTS REQUIRED**

PARCEL NUMBER	OWNER	INTEREST REQUIRED	H.E. ACRES REQUIRED			T.L.E. ACRES
			NEW	EXISTING	TOTAL	
1	KEBF DUPLEX, LLC	T.L.E.	---	---	---	0.014
2	JAMES A. AND KIM E. NEIBUHR	T.L.E.	---	---	---	0.011
3	WE ENERGIES	H.E., T.L.E.	0.406	0.229	0.635	0.201

OWNER'S NAMES ARE SHOWN FOR REFERENCE PURPOSES ONLY AND ARE SUBJECT TO CHANGE PRIOR TO THE TRANSFER OF LAND INTERESTS TO THE DEPARTMENT.

**COURSE TABLE**

COURSE	BEARING	DISTANCE
HE700 TO HE701	S 44° 07' 59" E	28.28'
HE701 TO HE702	S 00° 52' 01" W	310.18'
HE702 TO HE703	N 89° 16' 39" W	20.00'
HE703 TO HE704	S 00° 52' 01" W	30.00'
HE704 TO HE705	N 89° 08' 45" W	104.00'
HE705 TO HE706	N 02° 10' 19" E	30.08'
HE706 TO HE707	S 89° 06' 16" E	93.32'
HE707 TO HE708	N 00° 52' 01" E	268.41'
HE708 TO HE709	N 89° 07' 59" W	94.18'
HE709 TO HE710	N 00° 40' 59" E	61.83'
HE710 TO HE700	S 89° 07' 59" E	104.38'

**COURSE TABLE**

COURSE	BEARING	DISTANCE
HE500 TO HE501	N 03° 31' 47" E	24.81'
HE501 TO HE502	N 00° 29' 14" W	50.00'
HE502 TO HE503	S 89° 30' 46" W	60.32'
HE503 TO HE504	S 00° 28' 55" W	74.76'
HE504 TO HE505	S 89° 30' 46" W	1.00'
HE505 TO HE506	S 00° 40' 59" W	75.02'
HE506 TO HE507	N 89° 30' 46" E	60.64'
HE507 TO HE508	N 00° 29' 14" W	50.25'
HE508 TO HE500	N 03° 31' 47" E	24.81'

HWY	BASIS OF EXISTING R/W	WIDTH
CLEVELAND AVENUE	I-894-7(3)303 CSM 2135 CSM 2258	1960 1973 1974
I-894 ZOO FREEWAY	I-894-7(3)303	1960
DAKOTA STREET	WILDWOOD PARK MILWAUKEE BUILDERS ASSOC. WILDWOOD ESTATES	1954 1954
101ST STREET	MILWAUKEE BUILDERS ASSOC. WILDWOOD ESTATES	1954
W. MONTANA AVENUE	WILDWOOD PARK MILWAUKEE BUILDERS ASSOC. WILDWOOD ESTATES	1954 1954

**UTILITY SCHEDULE AND INTERESTS REQUIRED**

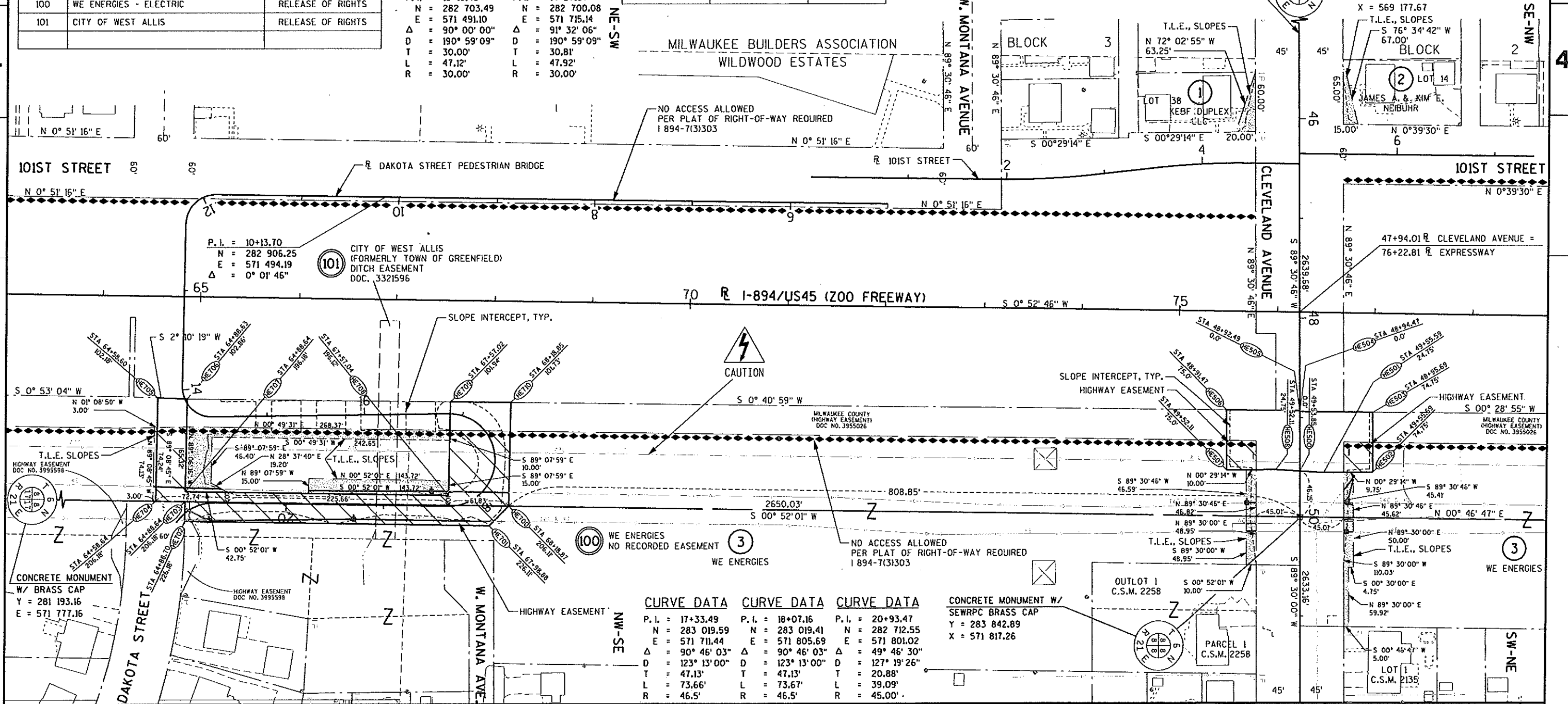
UTILITY NUMBER	OWNER	INTEREST REQUIRED
100	WE ENERGIES - ELECTRIC	RELEASE OF RIGHTS
101	CITY OF WEST ALLIS	RELEASE OF RIGHTS

**CURVE DATA**

P.I. = 12+16.48	P.I. = 14+27.67
N = 282 703.49	N = 282 700.08
E = 571 491.10	E = 571 715.14
Δ = 90° 00' 00"	Δ = 91° 32' 06"
D = 190° 59' 09"	D = 190° 59' 09"
T = 30.00'	T = 30.81'
L = 47.12'	L = 47.92'
R = 30.00'	R = 30.00'

**CURVE DATA**

P.I. = 10+13.70	P.I. = 17+33.49	P.I. = 18+07.16	P.I. = 20+93.47
N = 282 906.25	N = 283 019.59	N = 283 019.41	N = 282 712.55
E = 571 494.19	E = 571 711.44	E = 571 805.69	E = 571 801.02
Δ = 0° 01' 46"	Δ = 90° 46' 03"	Δ = 90° 46' 03"	Δ = 49° 46' 30"
	D = 123° 13' 00"	D = 123° 13' 00"	D = 127° 19' 26"
	T = 47.13'	T = 47.13'	T = 20.88'
	L = 73.66'	L = 73.67'	L = 39.09'
	R = 46.5'	R = 46.5'	R = 45.00'



REVISION DATE	DATE OCT. 12, 2012	SCALE, FEET	HWY: I-894/US 45	STATE R/W PROJECT NUMBER 1090-07-23	PLAT SHEET 4.2
GRID FACTOR		0 50 100	COUNTY: MILWAUKEE	CONSTRUCTION PROJECT NUMBER 1090-07-73, 1100-03-79	PS&E SHEET E