

The floor plan shows the layout of the 1000 Series exhibit space. The rooms and their dimensions are as follows:

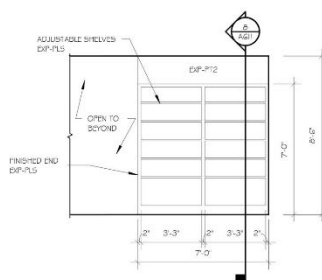
- WORK AREA** (108): Located on the left side of the plan.
- SERVER** (106): Located in the center-left area.
- STORAGE** (105): Located in the bottom-left corner.
- CHECK-IN** (103): Located in the center-right area.
- MARKET** (104): Located in the bottom-right corner.
- 101B**: Located in the top-right corner.

Dimensions are indicated in red text:

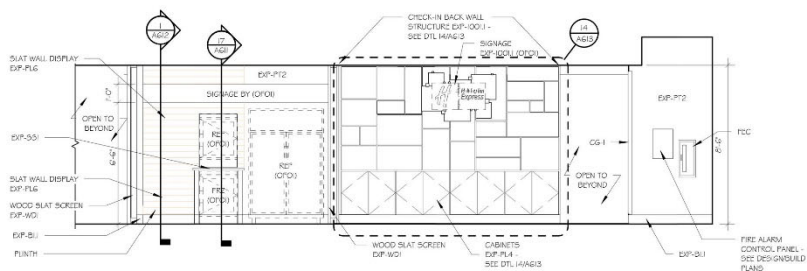
- 9'**: Dimension across the bottom of the CHECK-IN and MARKET areas.
- 5'**: Dimension across the bottom of the MARKET area.

Other labels include 109A, 108A, 106A, 105A, 109B, 108B, 106B, 105B, 109C, 108C, 106C, 105C, 109D, 108D, 106D, 105D, 109E, 108E, 106E, 105E, 109F, 108F, 106F, 105F, 109G, 108G, 106G, 105G, 109H, 108H, 106H, 105H, 109I, 108I, 106I, 105I, 109J, 108J, 106J, 105J, 109K, 108K, 106K, 105K, 109L, 108L, 106L, 105L, 109M, 108M, 106M, 105M, 109N, 108N, 106N, 105N, 109O, 108O, 106O, 105O, 109P, 108P, 106P, 105P, 109Q, 108Q, 106Q, 105Q, 109R, 108R, 106R, 105R, 109S, 108S, 106S, 105S, 109T, 108T, 106T, 105T, 109U, 108U, 106U, 105U, 109V, 108V, 106V, 105V, 109W, 108W, 106W, 105W, 109X, 108X, 106X, 105X, 109Y, 108Y, 106Y, 105Y, 109Z, 108Z, 106Z, 105Z, 109AA, 108AA, 106AA, 105AA, 109AB, 108AB, 106AB, 105AB, 109AC, 108AC, 106AC, 105AC, 109AD, 108AD, 106AD, 105AD, 109AE, 108AE, 106AE, 105AE, 109AF, 108AF, 106AF, 105AF, 109AG, 108AG, 106AG, 105AG, 109AH, 108AH, 106AH, 105AH, 109AI, 108AI, 106AI, 105AI, 109AJ, 108AJ, 106AJ, 105AJ, 109AK, 108AK, 106AK, 105AK, 109AL, 108AL, 106AL, 105AL, 109AM, 108AM, 106AM, 105AM, 109AN, 108AN, 106AN, 105AN, 109AO, 108AO, 106AO, 105AO, 109AP, 108AP, 106AP, 105AP, 109AQ, 108AQ, 106AQ, 105AQ, 109AR, 108AR, 106AR, 105AR, 109AS, 108AS, 106AS, 105AS, 109AT, 108AT, 106AT, 105AT, 109AU, 108AU, 106AU, 105AU, 109AV, 108AV, 106AV, 105AV, 109AW, 108AW, 106AW, 105AW, 109AX, 108AX, 106AX, 105AX, 109AY, 108AY, 106AY, 105AY, 109AZ, 108AZ, 106AZ, 105AZ, 109BA, 108BA, 106BA, 105BA, 109BB, 108BB, 106BB, 105BB, 109BC, 108BC, 106BC, 105BC, 109BD, 108BD, 106BD, 105BD, 109BE, 108BE, 106BE, 105BE, 109BF, 108BF, 106BF, 105BF, 109BG, 108BG, 106BG, 105BG, 109BH, 108BH, 106BH, 105BH, 109BI, 108BI, 106BI, 105BI, 109BJ, 108BJ, 106BJ, 105BJ, 109BK, 108BK, 106BK, 105BK, 109BL, 108BL, 106BL, 105BL, 109BM, 108BM, 106BM, 105BM, 109BN, 108BN, 106BN, 105BN, 109BO, 108BO, 106BO, 105BO, 109BP, 108BP, 106BP, 105BP, 109BQ, 108BQ, 106BQ, 105BQ, 109BR, 108BR, 106BR, 105BR, 109BS, 108BS, 106BS, 105BS, 109BT, 108BT, 106BT, 105BT, 109BU, 108BU, 106BU, 105BU, 109BV, 108BV, 106BV, 105BV, 109BW, 108BW, 106BW, 105BW, 109BX, 108BX, 106BX, 105BX, 109BY, 108BY, 106BY, 105BY, 109BZ, 108BZ, 106BZ, 105BZ, 109CA, 108CA, 106CA, 105CA, 109CB, 108CB, 106CB, 105CB, 109CC, 108CC, 106CC, 105CC, 109CD, 108CD, 106CD, 105CD, 109CE, 108CE, 106CE, 105CE, 109CF, 108CF, 106CF, 105CF, 109CG, 108CG, 106CG, 105CG, 109CH, 108CH, 106CH, 105CH, 109CI, 108CI, 106CI, 105CI, 109CJ, 108CJ, 106CJ, 105CJ, 109CK, 108CK, 106CK, 105CK, 109CL, 108CL, 106CL, 105CL, 109CM, 108CM, 106CM, 105CM, 109CN, 108CN, 106CN, 105CN, 109CO, 108CO, 106CO, 105CO, 109CP, 108CP, 106CP, 105CP, 109CQ, 108CQ, 106CQ, 105CQ, 109CR, 108CR, 106CR, 105CR, 109CS, 108CS, 106CS, 105CS, 109CT, 108CT, 106CT, 105CT, 109CU, 108CU, 106CU, 105CU, 109CV, 108CV, 106CV, 105CV, 109CW, 108CW, 106CW, 105CW, 109CX, 108CX, 106CX, 105CX, 109CY, 108CY, 106CY, 105CY, 109CZ, 108CZ, 106CZ, 105CZ, 109DA, 108DA, 106DA, 105DA, 109DB, 108DB, 106DB, 105DB, 109DC, 108DC, 106DC, 105DC, 109DD, 108DD, 106DD, 105DD, 109DE, 108DE, 106DE, 105DE, 109DF, 108DF, 106DF, 105DF, 109DG, 108DG, 106DG, 105DG, 109DH, 108DH, 106DH, 105DH, 109DI, 108DI, 106DI, 105DI, 109DJ, 108DJ, 106DJ, 105DJ, 109DK, 108DK, 106DK, 105DK, 109DL, 108DL, 106DL, 105DL, 109DM, 108DM, 106DM, 105DM, 109DN, 108DN, 106DN, 105DN, 109DO, 108DO, 106DO, 105DO, 109DP, 108DP, 106DP, 105DP, 109DQ, 108DQ, 106DQ, 105DQ, 109DR, 108DR, 106DR, 105DR, 109DS, 108DS, 106DS, 105DS, 109DT, 108DT, 106DT, 105DT, 109DU, 108DU, 106DU, 105DU, 109DV, 108DV, 106DV, 105DV, 109DW, 108DW, 106DW, 105DW, 109DX, 108DX, 106DX, 105DX, 109DY, 108DY, 106DY, 105DY, 109DZ, 108DZ, 106DZ, 105DZ, 109EA, 108EA, 106EA, 105EA, 109EB, 108EB, 106EB, 105EB, 109EC, 108EC, 106EC, 105EC, 109ED, 108ED, 106ED, 105ED, 109EE, 108EE, 106EE, 105EE, 109EF, 108EF, 106EF, 105EF, 109EG, 108EG, 106EG, 105EG, 109EH, 108EH, 106EH, 105EH, 109EI, 108EI, 106EI, 105EI, 109EJ, 108EJ, 106EJ, 105EJ, 109EK, 108EK, 106EK, 105EK, 109EL, 108EL, 106EL, 105EL, 109EM, 108EM, 106EM, 105EM, 109EN, 108EN, 106EN, 105EN, 109EO, 108EO, 106EO, 105EO, 109EP, 108EP, 106EP, 105EP, 109EQ, 108EQ, 106EQ, 105EQ, 109ER, 108ER, 106ER, 105ER, 109ES, 108ES, 106ES, 105ES, 109ET, 108ET, 106ET, 105ET, 109EU, 108EU, 106EU, 105EU, 109EV, 108EV, 106EV, 105EV, 109EW, 108EW, 106EW, 105EW, 109EX, 108EX, 106EX, 105EX, 109EY, 108EY, 106EY, 105EY, 109EZ, 108EZ, 106EZ, 105EZ, 109FA, 108FA, 106FA, 105FA, 109FB, 108FB, 106FB, 105

54" x 26.5" x 77"



SCALE: 1/4" = 1'-0"



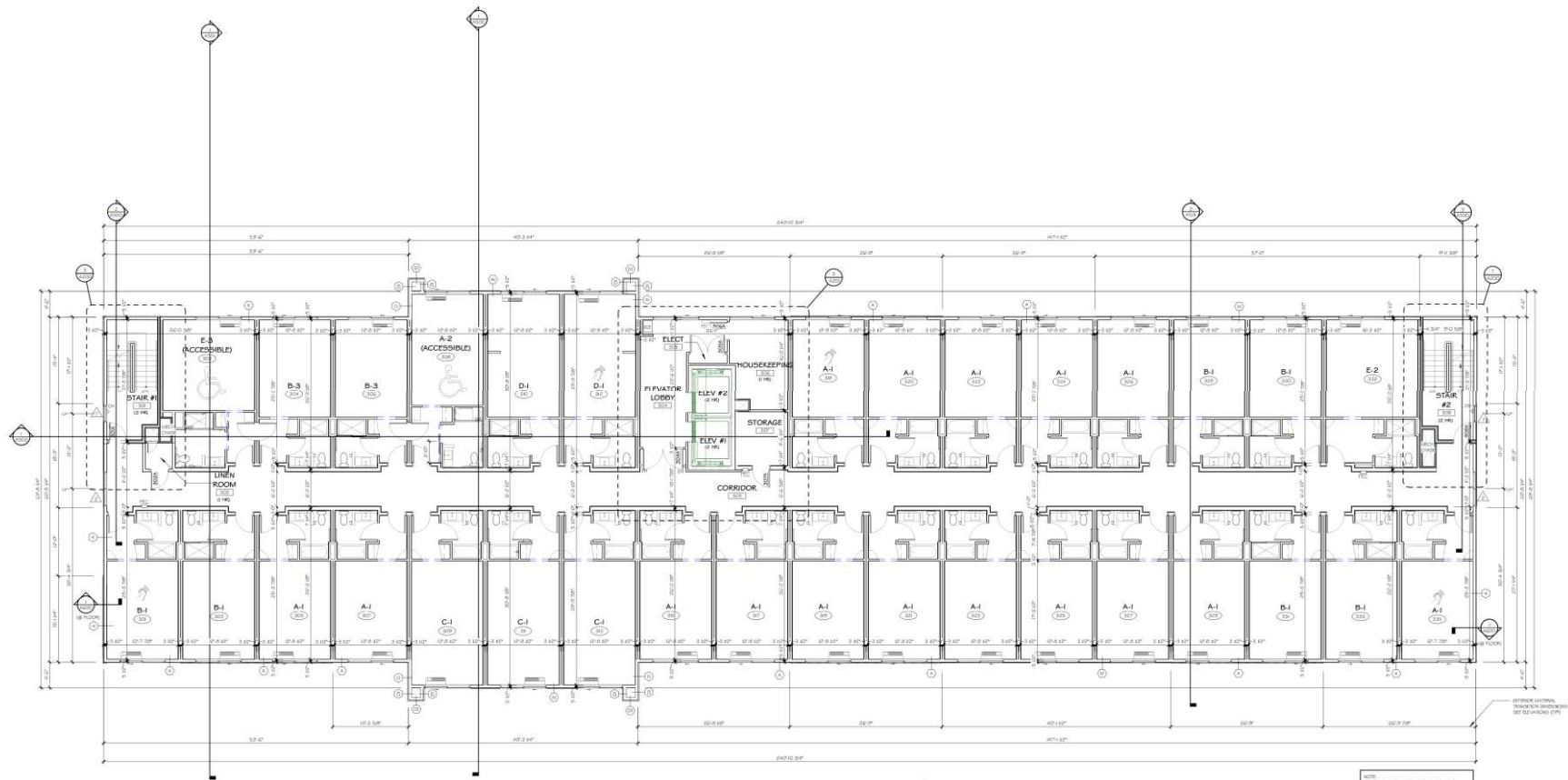
SCALE: 1/4" = 1'-0"





SCALE: 100 = 1-00



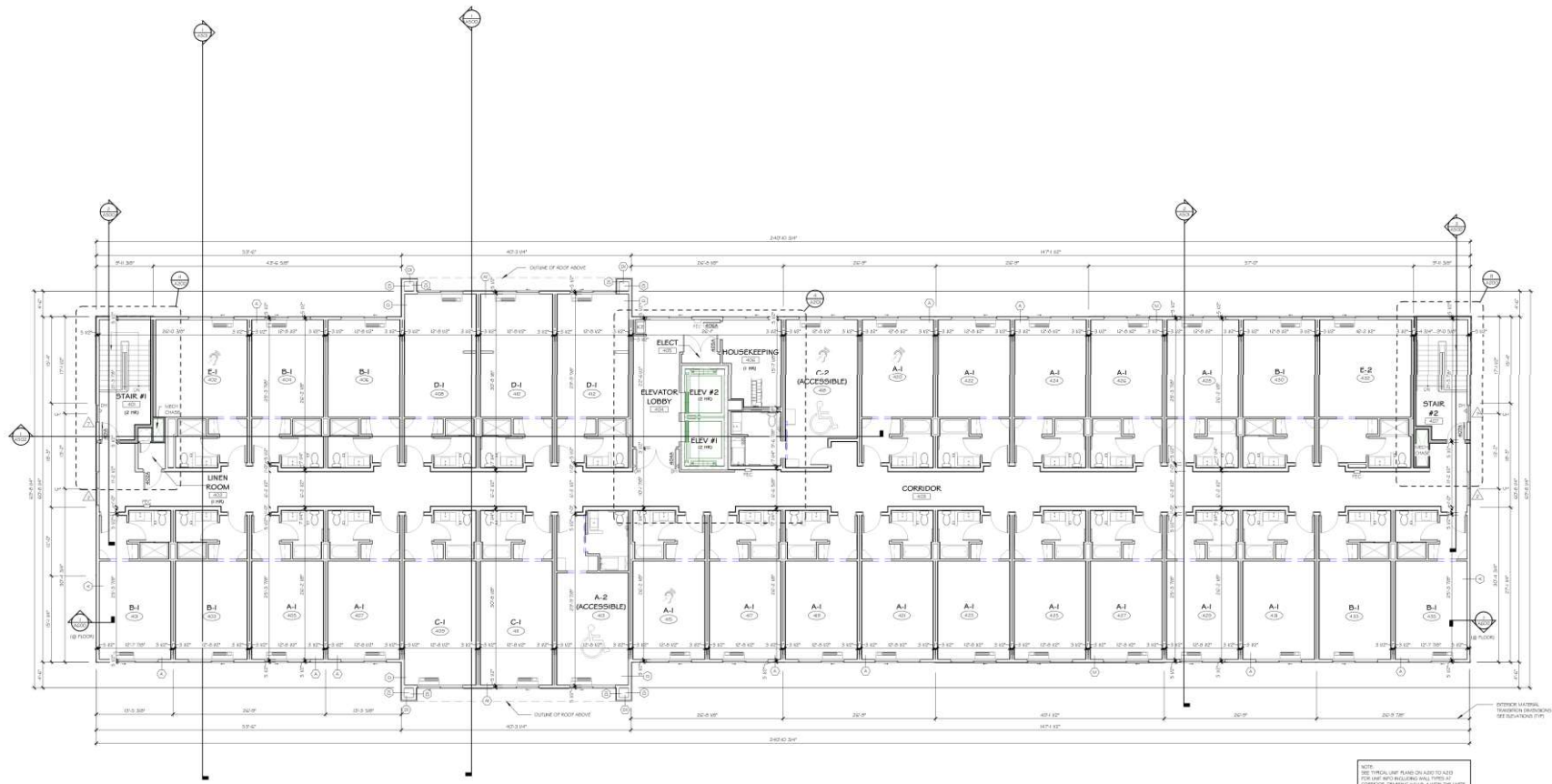


THIRD FLOOR PLAN

SCALE: 1/8" = 1'-0"



NOTE:
SEE SPECIFICATIONS PLANS ON 420 TO 443
FOR UNIT INFO INCLUDING UNIT TYPES AND
CORRELATE, DIMENSIONS, FINISHES, ETC. WITH THE UNITS



FOURTH FLOOR PLAN

SCALE: 1/8" = 1'-0"



NOTES:
SEE TYPICAL UNIT PLANS ON ADDS TO A-123
FOR UNIT AND BUILDING WALL TYPES AND
CORRELATE DRAWING TO A-123, THE CORRELATE