

R/W PROJECT NUMBER 2410-00-07	SHEET NUMBER 4.01	TOTAL SHEETS 10
FEDERAL PROJECT NUMBER		
PLAT OF RIGHT OF WAY REQUIRED FOR W. NATIONAL AVENUE S. 76TH ST. - S. 70TH ST.		
W. NATIONAL AVENUE		MILWAUKEE CO.
CONSTRUCTION PROJECT NUMBER 2410-00-77		

STATE OF WISCONSIN
DEPARTMENT OF TRANSPORTATION
PLAN OF PROPOSED IMPROVEMENT
W. NATIONAL AVENUE
S. 76TH STREET TO S. 70TH STREET
LOCAL ROAD
MILWAUKEE COUNTY

STATE PROJECT NUMBER
2410-00-77

CAUTION
THIS PLAT IS FOR ILLUSTRATIVE PURPOSES ONLY.
DEEDS MUST BE CHECKED TO DETERMINE
PROPERTY BOUNDARIES.

CONVENTIONAL SYMBOLS

SECTION LINE	---	SECTION CORNER SYMBOL		R/W MONUMENT (TO BE SET)	●
QUARTER LINE	---	SECTION CORNER MONUMENT		NON-MONUMENTED R/W POINT	○
SIXTEENTH LINE	---	GEODETIC SURVEY MONUMENT		FOUND IRON PIN (1-INCH UNLESS NOTED)	IP
NEW REFERENCE LINE	---	SIXTEENTH CORNER MONUMENT		OFF-PREMISE SIGN	
NEW R/W LINE	---	SIGN		NON-COMPENSABLE	
EXISTING R/W OR HE LINE	---	PARCEL NUMBER	25	UTILITY NUMBER	40
PROPERTY LINE	---	PARALLEL OFFSETS			
LOT, TIE & OTHER MINOR LINES	---				
SLOPE INTERCEPT	---				
CORPORATE LIMITS	---				
UNDERGROUND FACILITY (COMMUNICATIONS, ELECTRIC, ETC)	---				
NEW R/W (FEE OR HE) (HATCHING VARIES BY OWNER)	---				
TEMPORARY LIMITED EASEMENT AREA	---				
EASEMENT AREA (PERMANENT LIMITED OR RESTRICTED DEVELOPMENT)	---				
TRANSMISSION STRUCTURES	---				
BUILDING TO BE REMOVED	---				
BRIDGE	---				

CONVENTIONAL ABBREVIATIONS

ACCESS RIGHTS	AR	POINT OF BEGINNING	POB
ACRES	AC	POINT OF CURVATURE	PC
AHEAD	AH	POINT OF COMPOUND CURVE	PCC
ALUMINUM	ALUM	POINT OF INTERSECTION	PI
AND OTHERS	ET AL	POINT OF TANGENCY	PT
BACK	BK	PROPERTY LINE	PL
BLOCK	BLK	RECORDED AS	(100')
CENTERLINE	C	REEL / IMAGE	R/I
CERTIFIED SURVEY MAP	CSM	REFERENCE LINE	R
CONCRETE	CONC	REMAINING	REM
COUNTY	CO	RESTRICTIVE DEVELOPMENT EASEMENT	RDE
COUNTY TRUNK HIGHWAY	CTH	RIGHT	RT
DISTANCE	DIST.	RIGHT OF WAY	R/W
CORNER	COR	SECTION	SEC
DOCUMENT NUMBER	DOC	SEPTIC VENT	SEPV
EASEMENT	EASE	SQUARE FEET	SF
EXISTING	EX	STATE TRUNK HIGHWAY	STH
GAS VALVE	GV	STATION	STA
GRID NORTH	GN	TELEPHONE PEDESTAL	TP
HIGHWAY EASEMENT	HE	TEMPORARY LIMITED EASEMENT	TLE
IDENTIFICATION	ID	TRANSPORTATION PROJECT PLAT	TPP
LAND CONTRACT	LC	UNITED STATES HIGHWAY	USH
LEFT	LT	VOLUME	V
MONUMENT	MON	GRID COORDINATES	Y, X
NATIONAL GEODETIC SURVEY NUMBER	NGS	GROUND COORDINATES	N, E
OUTLOT	OL		
PAGE	P		
PERMANENT LIMITED EASEMENT	PLE		

NOTES:

COORDINATES SHOWN ON THIS PLAT ARE ORIENTED TO THE WISCONSIN STATE PLANE COORDINATE SYSTEM, SOUTH ZONE. ALL PLAT DISTANCES ARE GROUND LENGTH AND MAY BE CONVERTED TO GRID LENGTH BY MULTIPLYING THE DISTANCE BY THE GRID FACTOR PROVIDED ON THE DETAIL SHEETS.

RIGHT OF WAY MONUMENTS ARE AND ARE PLACED PRIOR TO OR AT THE TIME OF LAND TITLE TRANSFER.

RIGHT OF WAY BOUNDARIES ARE DEFINED WITH COURSES OF THE PERIMETER OF THE HIGHWAY LANDS REFERENCED TO THE U.S. PUBLIC LAND SURVEY OR OTHER SURVEYS OF PUBLIC RECORD.

A TEMPORARY LIMITED EASEMENT (TLE) IS A RIGHT FOR CONSTRUCTION PURPOSES, AS DEFINED HEREIN, INCLUDING THE RIGHT TO OPERATE THE NECESSARY EQUIPMENT THEREON AND THE RIGHT OF INGRESS AND EGRESS, AS LONG AS REQUIRED FOR SUCH PUBLIC PURPOSE, INCLUDING THE RIGHT TO PRESERVE, PROTECT, REMOVE, OR PLANT THEREON ANY VEGETATION THAT HIGHWAY AUTHORITIES DEEM NECESSARY OR DESIRABLE. ALL TLE'S EXPIRE AT THE COMPLETION OF THE CONSTRUCTION PROJECT FOR WHICH THIS INSTRUMENT IS GIVEN.

END PROJECT
STA. 39+06.96
1091' NORTH OF AND 1968' EAST OF THE SW CORNER OF THE NW 1/4, SECTION 3, T.6N., R.21E.

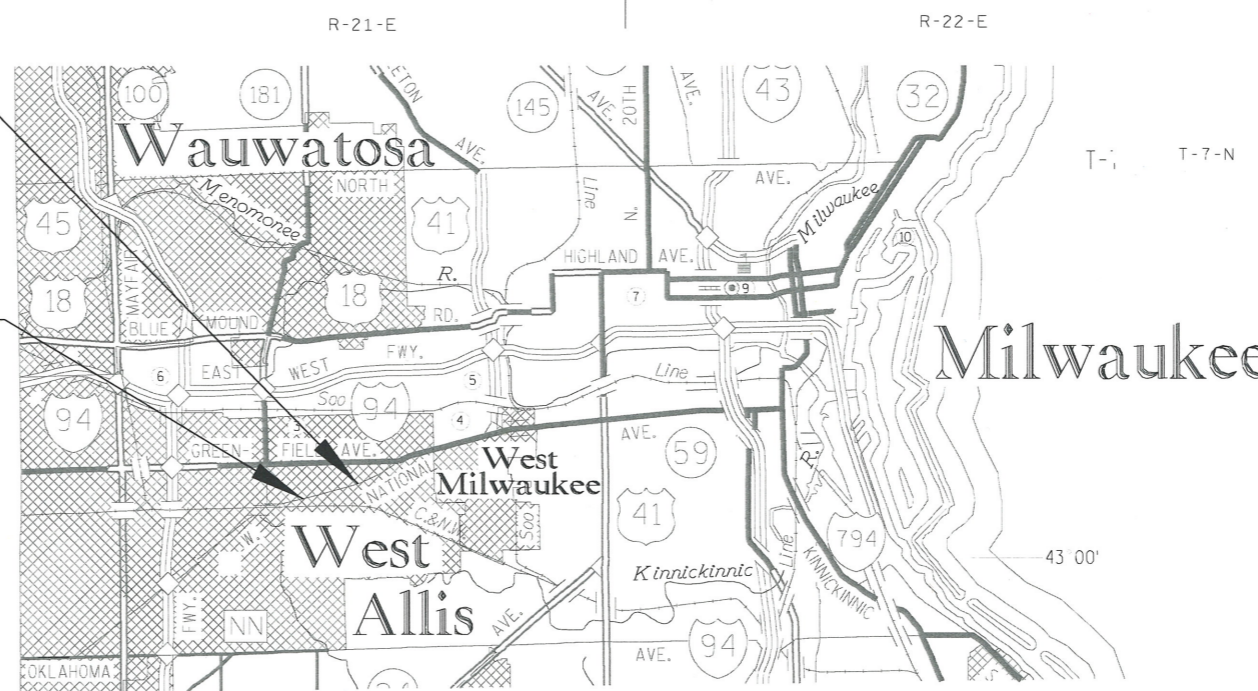
BEGIN PROJECT
STA. 15+86.00
540' NORTH OF AND 273' WEST OF THE SW CORNER OF THE NW 1/4, SECTION 3, T.6N., R.21E.

CURVE DATA

LONG CHORD	LCH
LONG CHORD BEARING	LCB
RADIUS	R
DEGREE OF CURVE	D
CENTRAL ANGLE	Δ/DELTA
LENGTH OF CURVE	L
TANGENT	T
DIRECTION AHEAD	DA
DIRECTION BACK	DB

CONVENTIONAL UTILITY SYMBOLS

WATER	---
GAS	---
TELEPHONE	---
OVERHEAD	---
TRANSMISSION LINES	---
ELECTRIC	---
CABLE TELEVISION	---
FIBER OPTIC	---
SANITARY SEWER	---
STORM SEWER	---



LAYOUT
SCALE 0 MI.

TOTAL NET LENGTH OF CENTERLINE = 0.440 MI.

ORIGINAL PLAT PREPARED BY

GRAEF

WISCONSIN

MICHAEL J. RATZBURG
S-2236
WAUKESHA, WI

LAND SURVEYOR

11/01/16 (Date) (Signature)

REVISION DATE	
09/28/17	
10/04/17	

CITY OF WEST ALLIS

APPROVED FOR THE CITY

DATE: 10/24/17 (Signature)

SCHEDULE OF LANDS & INTERESTS REQUIRED

OWNER'S NAMES ARE SHOWN FOR REFERENCE
PURPOSED ONLY AND ARE SUBJECT TO CHANGE
PRIOR TO THE TRANSFER OF LAND INTERESTS
TO THE DEPARTMENT.

PARCEL NUMBER	SHEET NUMBER	OWNER	INTEREST REQUIRED	TOTAL ACRES	NEW	EXISTING	TOTAL	REMAINING ACRES	TEMP. ACRES	PERM. ACRES	PARCEL NUMBER
1	4.05	KAH II LLC	FEE, TLE	0.959	0.001	0.000	0.001	0.958	0.021	0.000	1
2	4.05	Jordan Evangelical Lutheran Congregation	FEE, TLE	0.781	0.003	0.000	0.003	0.781	0.006	0.000	2
3	4.05	City of West Allis	TLE	0.670	0.000	0.000	0.000	0.670	0.018	0.000	3
4	4.06	Gerald P. Neitzel	FEE, TLE	0.167	0.002	0.000	0.002	0.165	0.033	0.000	4
5	4.06	Charles I. Foster, Willaim Murdock, Frank Baldwin, Trustees of W.A. Lodge No. 291F. & A.M. and W.A. Lodge No. 291, a Fraternal Org.	TLE	0.494	0.000	0.000	0.000	0.494	0.041	0.000	5
6	4.06	Central Park, LLC	TLE	1.884	0.000	0.000	0.000	1.884	0.029	0.000	6
7	4.07	Richardson Holdings, LLC	FEE, TLE	0.662	0.004	0.000	0.004	0.658	0.045	0.000	7
8	4.07	City of West Allis	FEE, TLE	4.042	0.040	0.000	0.040	4.002	0.251	0.000	8
9	4.07/4.08	City of West Allis	TLE	0.558	0.000	0.000	0.000	0.558	0.041	0.000	9
10	4.08	City of West Allis	FEE, TLE	0.078	0.001	0.000	0.001	0.077	0.006	0.000	10
11	4.08	Jack A. Schoberg	FEE, TLE	0.083	0.001	0.000	0.001	0.082	0.005	0.000	11
12	4.08	Donnelly Real Estate, LLC	TLE	0.203	0.000	0.000	0.000	0.203	0.006	0.000	12
13	4.08	Dennis & Goria Geniesse	TLE	0.182	0.000	0.000	0.000	0.182	0.001	0.000	13
14	4.08	Dennis & Goria Geniesse	TLE	0.099	0.000	0.000	0.000	0.099	0.008	0.000	14
15	4.08	Dennis & Goria Geniesse	TLE	0.116	0.000	0.000	0.000	0.116	0.011	0.000	15
16	4.08	First Property Development, LLC	TLE	0.147	0.000	0.000	0.000	0.147	0.002	0.000	16
17	4.08	Russell & Arlene Kleist	TLE	0.147	0.000	0.000	0.000	0.147	0.009	0.000	17
18	4.08	Donald Falk	TLE	0.082	0.000	0.000	0.000	0.082	0.002	0.000	18
19	4.08	Ziegler-Wisconsin 16, LLC	TLE	1.285	0.000	0.000	0.000	1.285	0.043	0.000	19
20	4.09	Cesar Romero & Jenny Dela Cruz Pillado	TLE	0.113	0.000	0.000	0.000	0.113	0.009	0.000	20
21	4.09	BFS WI LLC	TLE	0.083	0.000	0.000	0.000	0.083	0.001	0.000	21
22	4.09	Wade V. & Rae Ann Register	TLE	0.088	0.000	0.000	0.000	0.088	0.001	0.000	22
23	4.09	Christopher L. Taylor	TLE	0.082	0.000	0.000	0.000	0.082	0.001	0.000	23
24	4.09	George & Lillian Steller	TLE	0.077	0.000	0.000	0.000	0.077	0.001	0.000	24
25	4.09	Thomas & Janet Doyle	FEE, TLE	0.261	0.001	0.000	0.001	0.260	0.026	0.000	25
26	4.09	City of West Allis	FEE, TLE	0.538	0.009	0.000	0.009	0.529	0.038	0.000	26
27	4.09	Craig F. Bushberger	FEE, TLE	0.080	0.001	0.000	0.001	0.079	0.008	0.000	27
28	4.09	Jaden/Brody LLC	TLE	0.108	0.000	0.000	0.000	0.108	0.011	0.000	28
29	4.10	Lloyd T. & Patricia Bradford	TLE	0.066	0.000	0.000	0.000	0.066	0.012	0.000	29
30	4.10	Thor Housing, LLC	TLE	0.071	0.000	0.000	0.000	0.071	0.005	0.000	30
31	4.10	Jorge Avila	TLE	0.076	0.000	0.000	0.000	0.076	0.006	0.000	31
32	4.10	Bradley J. Toth	TLE	0.100	0.000	0.000	0.000	0.100	0.009	0.000	32
33	4.10	City of West Allis	FEE, TLE	0.602	0.001	0.000	0.001	0.601	0.033	0.000	33
34	4.10	Expert Realty & Investments, LLC	FEE, TLE	0.476	0.001	0.000	0.001	0.475	0.021	0.000	34
35	4.10	Daniel S. & Valerie A. Garaci	TLE	0.110	0.000	0.000	0.000	0.110	0.005	0.000	35
36	4.10	Ken Baranowski	FEE, TLE	0.098	0.001	0.000	0.001	0.097	0.006	0.000	36
37	4.10	Thu-Phuong T Do	TLE	0.177	0.000	0.000	0.000	0.177	0.003	0.000	37

4

4

REVISION DATE
09/28/17 (NO CHANGES)
10/04/17 - PARCEL 80 REMOVED

DATE 08-15-2016

SCALE, FEET
0 N/A

HWY: NATIONAL AVENUE

R/W PROJECT NUMBER 2410-00-07

PLAT SHEET 4.02

COUNTY: MILWAUKEE

CONSTRUCTION PROJECT NUMBER 2410-00-77

PS&E SHEET

E

CITY

SE-NE

OF

SW-NE

SW-NE

WEST ALLIS

W. NATIONAL AVENUE

S. 77TH STREET

S. 76TH STREET

S. 75TH STREET

S. 74TH STREET

S. 73RD STREET

②

③

⑥

⑦

⑨

①

④

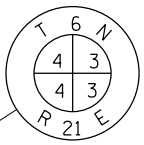
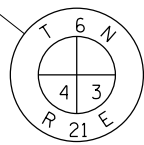
⑤

⑧

⑩

⑪

⑫



4

4

REVISION DATE
09/28/17 (NO CHANGES)
10/04/17 (NO CHANGES)

DATE 08-15-2016

SCALE, FEET



HWY: NATIONAL AVENUE

R/W PROJECT NUMBER 2410-00-07

PLAT SHEET 4.03

GRID FACTOR 0.99992401

COUNTY: MILWAUKEE

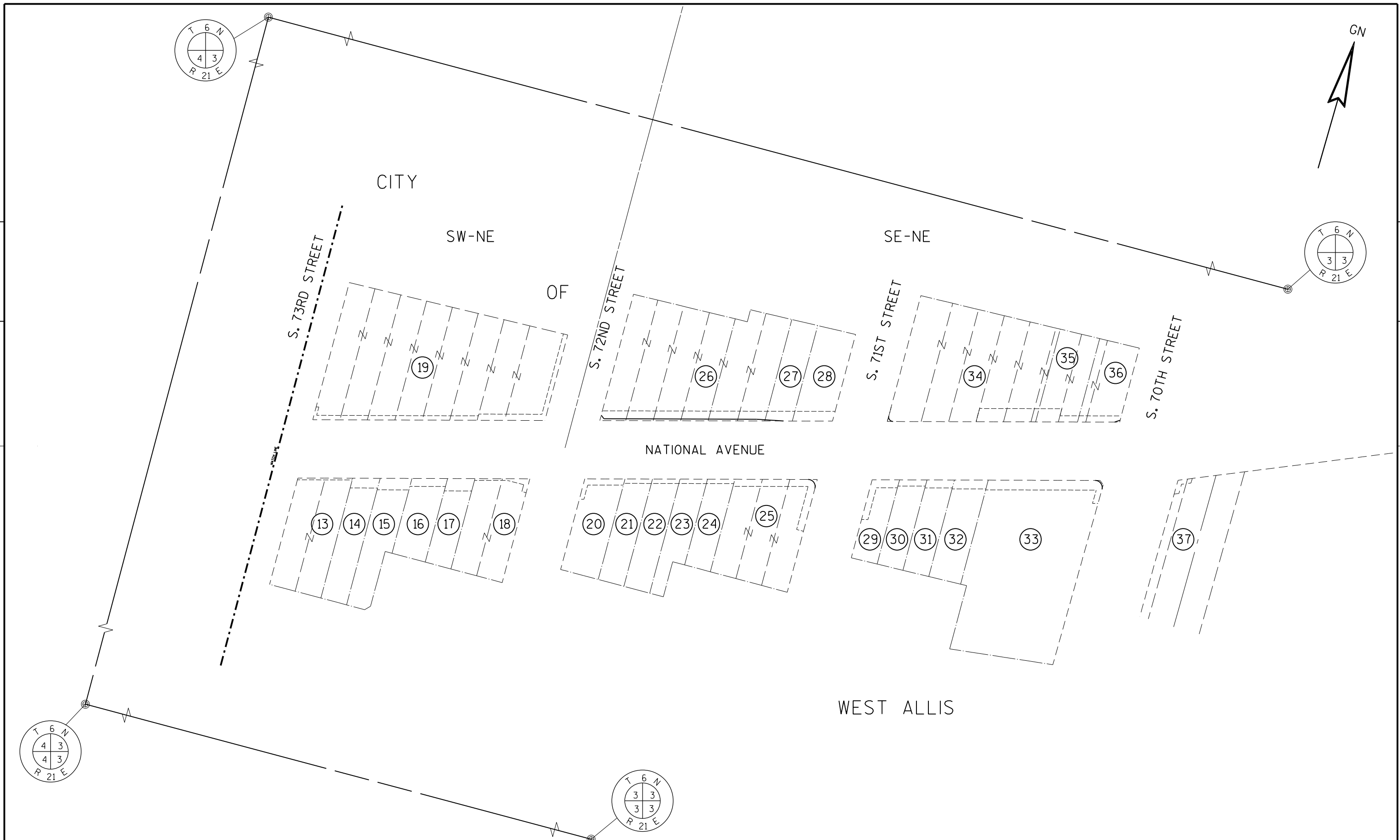
CONSTRUCTION PROJECT NUMBER 2410-00-77

PS&E SHEET

E

4

4



REVISION DATE
 09/28/17 (NO CHANGES)
 10/04/17 - PARCEL 80 REMOVED

DATE 08-15-2016
 GRID FACTOR 0.99992401

SCALE, FEET
 0 50 100

HWY: NATIONAL AVENUE
 COUNTY: MILWAUKEE

R/W PROJECT NUMBER 2410-00-07
 CONSTRUCTION PROJECT NUMBER 2410-00-77

PLAT SHEET 4.04
 PS&E SHEET

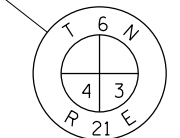
E

LINE TABLE

420-421	N 05°45'28" W	10.84'
421-422	N 00°27'53" W	32.68'
422-423	S 42°35'43" E	1.49'
423-420	S 00°27'53" E	42.37'
424-425	N 15°07'41" W	3.00'
425-426	N 74°52'19" W	44.34'
426-427	S 00°27'53" E	3.10'
427-424	S 74°52'19" W	43.55'
420-555	S 00°27'53" E	14.25'
555-571	S 89°32'07" W	45.91'
555-556	S 89°32'07" W	9.00'
571-426	S 00°27'53" E	6.20'
556-557	N 00°27'53" W	57.63'
557-558	N 42°35'43" W	6.37'
558-559	N 82°33'15" W	11.76'
559-560	S 75°35'26" W	50.57'
560-561	N 00°27'53" W	6.18'
561-562	N 75°35'26" E	50.24'
562-563	S 82°33'15" E	15.10'
563-422	S 42°35'43" E	13.84'
564-427	S 74°52'19" W	12.03'
425-565	N 15°07'41" W	6.00'
427-571	N 00°27'53" W	9.03'
571-566	N 74°52'19" E	12.12'
566-567	N 32°30'50" E	11.53'
567-568	N 00°27'53" W	74.17'
568-569	N 89°32'07" E	8.00'
569-570	S 00°27'53" E	71.03'
570-564	S 32°30'50" W	26.39'

BEGIN RELOCATION ORDER

STA. 15+86.00
N=375,060.537
E=2,532,876.387

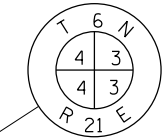


CONCRETE MONUMENT
W/BRASS CAP
N=376,917.33
E=2,533,134.77

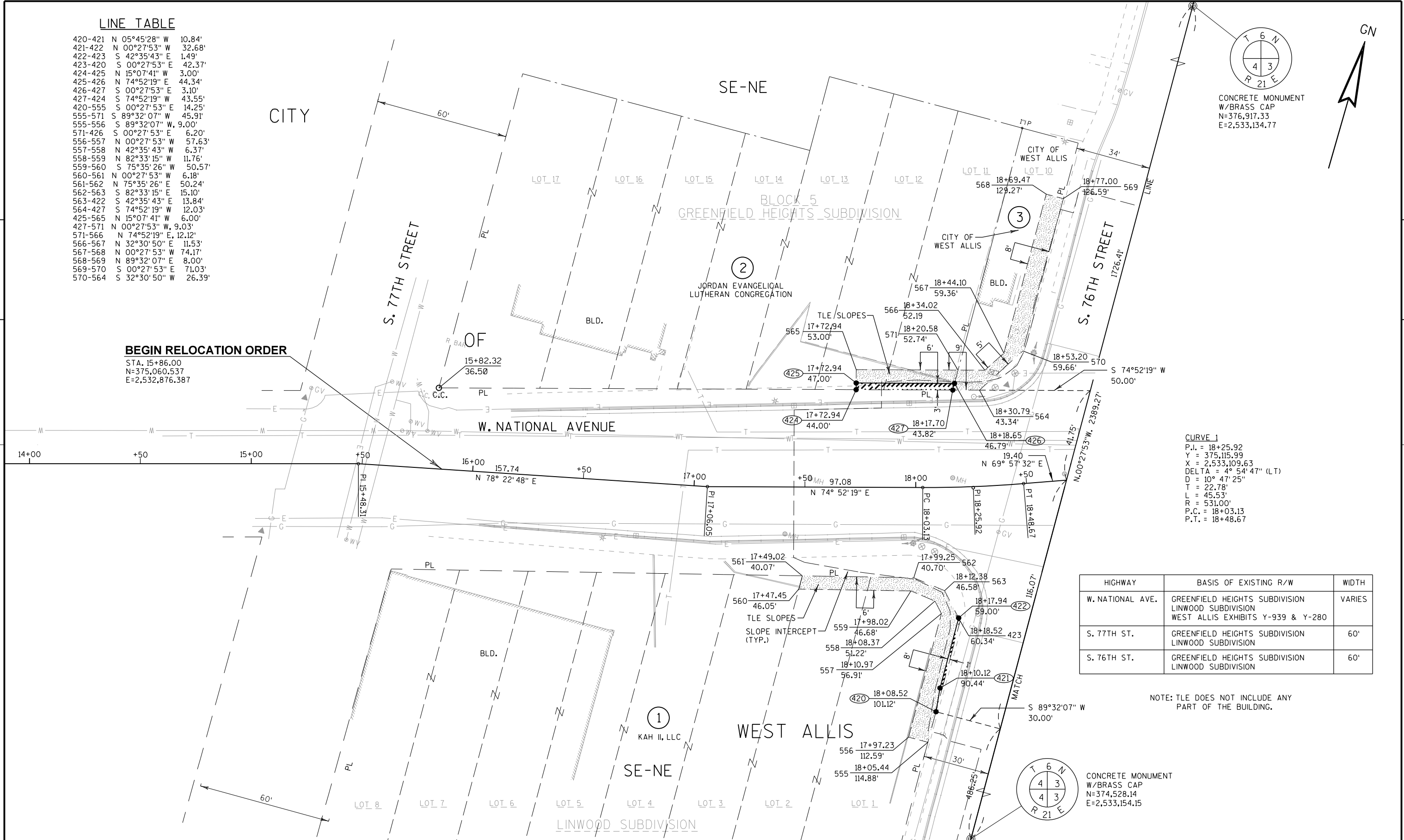
CURVE 1
P.I. = 18+25.92
Y = 375,115.99
X = 2,533,109.63
DELTA = 4° 54' 47" (LT)
D = 10° 47' 25"
T = 22.78'
L = 45.53'
R = 531.00'
P.C. = 18+03.13
P.T. = 18+48.67

HIGHWAY	BASIS OF EXISTING R/W	WIDTH
W. NATIONAL AVE.	GREENFIELD HEIGHTS SUBDIVISION LINWOOD SUBDIVISION WEST ALLIS EXHIBITS Y-939 & Y-280	VARIABLE
S. 77TH ST.	GREENFIELD HEIGHTS SUBDIVISION LINWOOD SUBDIVISION	60'
S. 76TH ST.	GREENFIELD HEIGHTS SUBDIVISION LINWOOD SUBDIVISION	60'

NOTE: TLE DOES NOT INCLUDE ANY PART OF THE BUILDING.



CONCRETE MONUMENT
W/BRASS CAP
N=374,528.14
E=2,533,154.15



REVISION DATE 09/28/17 (NO CHANGES) 10/04/17 (NO CHANGES)	DATE 08-15-2016	SCALE, FEET 0 20 40	HWY: NATIONAL AVENUE	R/W PROJECT NUMBER 2410-00-07	PLAT SHEET 4.05
GRID FACTOR 0.99992401			COUNTY: MILWAUKEE	CONSTRUCTION PROJECT NUMBER 2410-00-77	PS&E SHEET

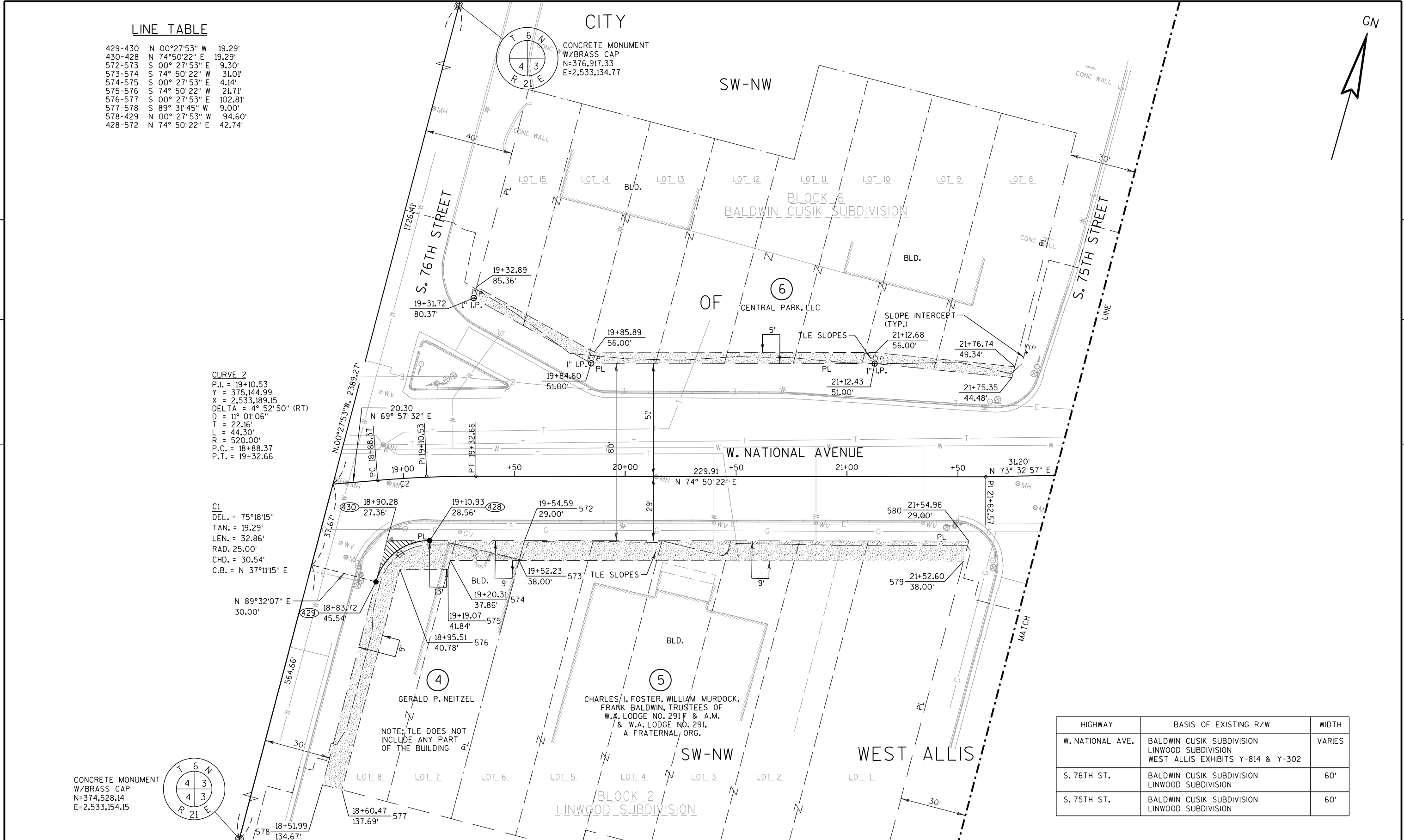
LINE TABLE

429-430	N 00°27'53" W	19.29'
430-428	N 74°50'22" E	19.29'
572-573	S 00° 27' 53" E	9.30'
573-574	S 74° 50' 22" W	31.01'
574-575	S 00° 27' 53" E	4.14'
575-576	S 74° 50' 22" W	21.71'
576-577	S 00° 27' 53" E	102.81'
577-578	S 89° 31' 45" W	9.00'
578-429	N 00° 27' 53" W	94.60'
428-572	N 74° 50' 22" E	42.74'

CURVE 2
 P.I. = 19+10.53
 Y = 375,144.99
 X = 2,533,189.15
 DELTA = 4° 52' 50" (RT)
 D = 11° 01' 06"
 T = 22.16'
 L = 44.30'
 R = 520.00'
 P.C. = 18+88.37
 P.T. = 19+32.66

C1
 DEL. = 75°18'15"
 TAN. = 19.29'
 LEN. = 32.86'
 RAD. 25.00'
 CHD. = 30.54'
 C.B. = N 37°11'15" E

CONCRETE MONUMENT
 W/BRASS CAP
 N=374,528.14
 E=2,533,154.15



HIGHWAY	BASIS OF EXISTING R/W	WIDTH
W. NATIONAL AVE.	BALDWIN CUSIK SUBDIVISION LINWOOD SUBDIVISION WEST ALLIS EXHIBITS Y-814 & Y-302	VARIES
S. 76TH ST.	BALDWIN CUSIK SUBDIVISION LINWOOD SUBDIVISION	60'
S. 75TH ST.	BALDWIN CUSIK SUBDIVISION LINWOOD SUBDIVISION	60'

REVISION DATE
 09/28/17 (NO CHANGES)
 10/04/17 (NO CHANGES)

DATE 08-15-2016
 GRID FACTOR 0.99992401

SCALE, FEET
 0 20 40

HWY: NATIONAL AVENUE
 COUNTY: MILWAUKEE

R/W PROJECT NUMBER 2410-00-07
 CONSTRUCTION PROJECT NUMBER 2410-00-77

PLAT SHEET 4.06
 PS&E SHEET

E

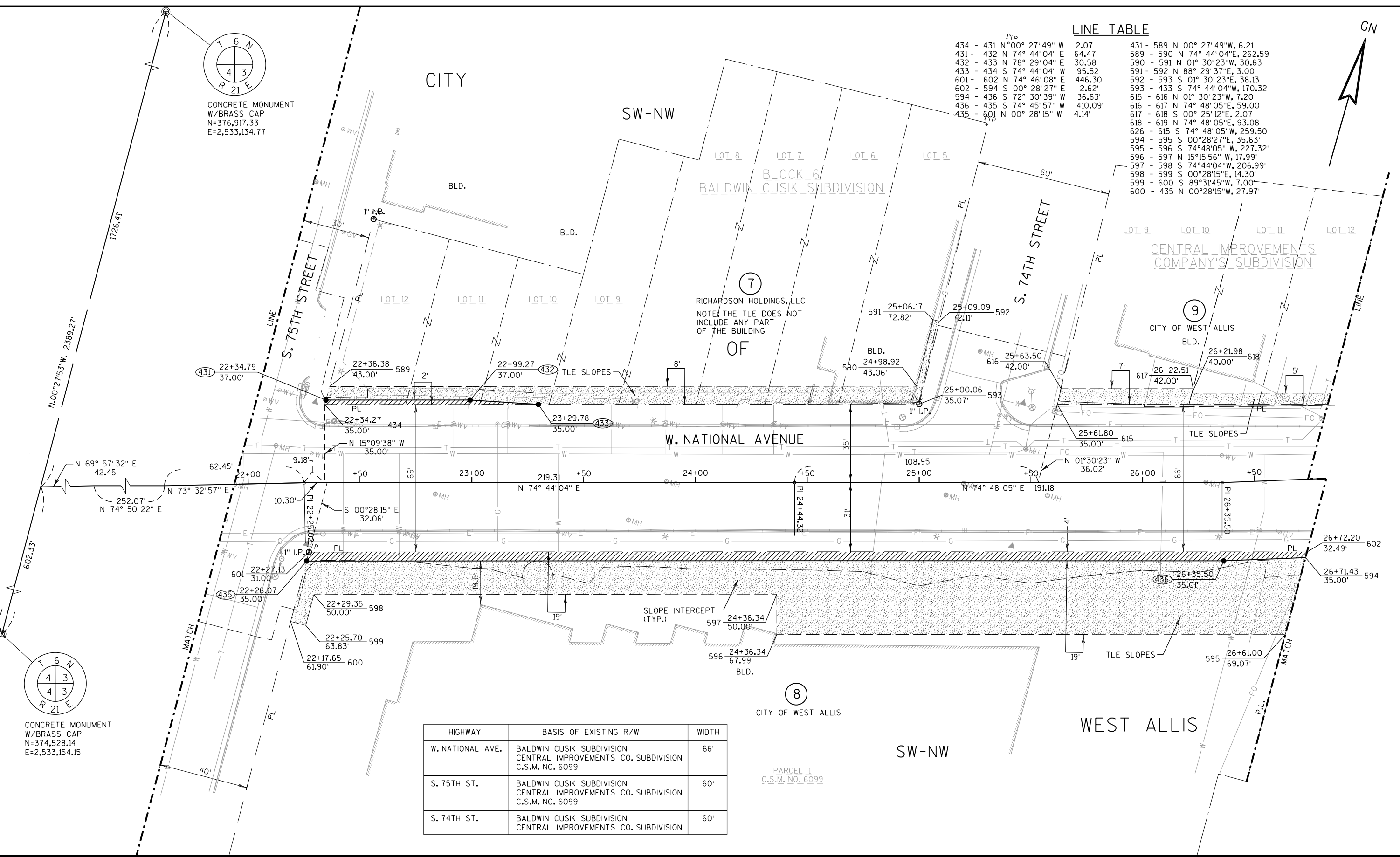
CONCRETE MONUMENT
W/BRASS CAP
N=376,917.33
E=2,533,134.77

CONCRETE MONUMENT
W/BRASS CAP
N=374,528.14
E=2,533,154.15

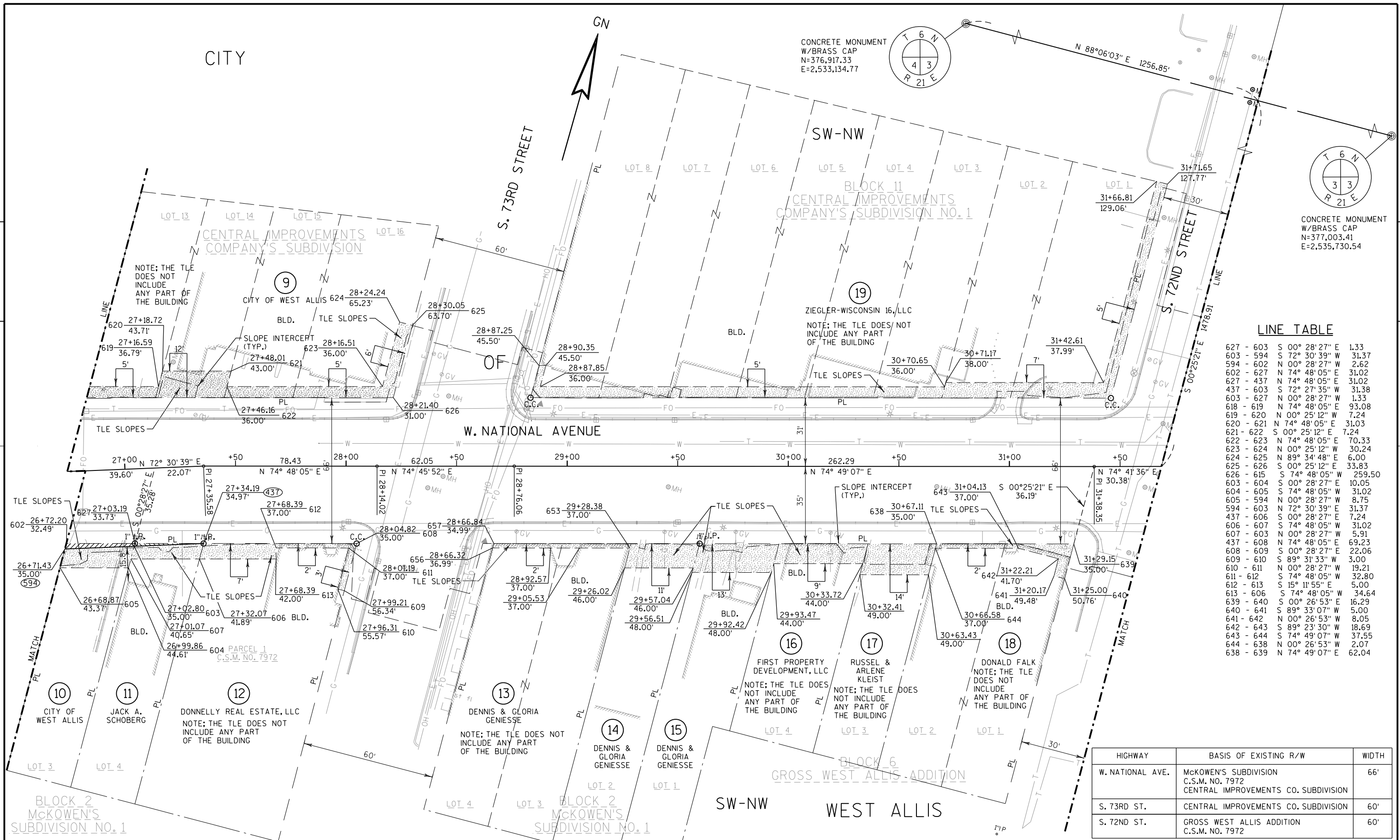
LINE TABLE

434 - 431 N 0°00' 27' 49" W	2.07	431 - 589 N 00° 27' 49" W, 6.21
431 - 432 N 74° 44' 04" E	64.47	589 - 590 N 74° 44' 04" E, 262.59
432 - 433 N 78° 29' 04" E	30.58	590 - 591 N 01° 30' 23" W, 30.63
433 - 434 S 74° 44' 04" W	95.52	591 - 592 N 88° 29' 37" E, 3.00
601 - 602 N 74° 46' 08" E	446.30'	592 - 593 S 01° 30' 23" W, 38.13
602 - 594 S 00° 28' 27" E	2.62'	593 - 433 S 74° 44' 04" W, 170.32
594 - 436 S 72° 30' 39" W	36.63'	615 - 616 N 01° 30' 23" W, 7.20
436 - 435 S 74° 45' 57" W	410.09'	616 - 617 N 74° 48' 05" E, 59.00
435 - 601 N 00° 28' 15" W	4.14'	617 - 618 S 00° 25' 12" E, 2.07
		618 - 619 N 74° 48' 05" E, 93.08
		626 - 615 S 74° 48' 05" W, 259.50
		594 - 595 S 00° 28' 27" E, 35.63'
		595 - 596 S 74° 48' 05" W, 227.32'
		596 - 597 N 15° 15' 56" W, 17.99'
		597 - 598 S 74° 44' 04" W, 206.99'
		598 - 599 S 00° 28' 15" E, 14.30'
		599 - 600 S 89° 31' 45" W, 7.00'
		600 - 435 N 00° 28' 15" W, 27.97'

HIGHWAY	BASIS OF EXISTING R/W	WIDTH
W. NATIONAL AVE.	BALDWIN CUSIK SUBDIVISION CENTRAL IMPROVEMENTS CO. SUBDIVISION C.S.M. NO. 6099	66'
S. 75TH ST.	BALDWIN CUSIK SUBDIVISION CENTRAL IMPROVEMENTS CO. SUBDIVISION C.S.M. NO. 6099	60'
S. 74TH ST.	BALDWIN CUSIK SUBDIVISION CENTRAL IMPROVEMENTS CO. SUBDIVISION	60'



REVISION DATE 09/28/17 (NO CHANGES) 10/04/17 (NO CHANGES)	DATE 08-15-2016	SCALE, FEET 0 20 40	HWY: NATIONAL AVENUE	R/W PROJECT NUMBER 2410-00-07	PLAT SHEET 4.07
GRID FACTOR			COUNTY: MILWAUKEE	CONSTRUCTION PROJECT NUMBER 2410-00-77	PS&E SHEET

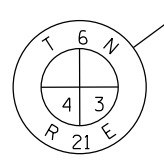


LINE TABLE

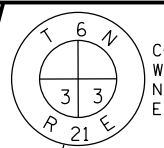
627 - 603	S 00° 28' 27" E	1.33
603 - 594	S 72° 30' 39" W	31.37
594 - 602	N 00° 28' 27" W	2.62
602 - 627	N 74° 48' 05" E	31.02
627 - 437	N 74° 48' 05" E	31.02
437 - 603	S 72° 27' 35" W	31.38
603 - 627	N 00° 28' 27" W	1.33
618 - 619	N 74° 48' 05" E	93.08
619 - 620	N 00° 25' 12" W	7.24
620 - 621	N 74° 48' 05" E	31.03
621 - 622	S 00° 25' 12" E	7.24
622 - 623	N 74° 48' 05" E	70.33
623 - 624	N 00° 25' 12" W	30.24
624 - 625	N 89° 34' 48" E	6.00
625 - 626	S 00° 25' 12" E	33.83
626 - 615	S 74° 48' 05" W	259.50
603 - 604	S 00° 28' 27" E	10.05
604 - 605	S 74° 48' 05" W	31.02
605 - 594	N 00° 28' 27" W	8.75
594 - 603	S 72° 30' 39" E	31.37
437 - 606	S 00° 28' 27" E	7.24
606 - 607	S 74° 48' 05" W	31.02
607 - 603	N 00° 28' 27" W	5.91
437 - 608	N 74° 48' 05" E	69.23
608 - 609	S 00° 28' 27" E	22.06
609 - 610	S 89° 31' 33" W	3.00
610 - 611	N 00° 28' 27" W	19.21
611 - 612	S 74° 48' 05" W	32.80
612 - 613	S 15° 11' 55" E	5.00
613 - 606	S 74° 48' 05" W	34.64
639 - 640	S 00° 26' 53" E	16.29
640 - 641	S 89° 33' 07" W	5.00
641 - 642	N 00° 26' 53" W	8.05
642 - 643	S 89° 23' 30" W	18.69
643 - 644	S 74° 49' 07" W	37.55
644 - 638	N 00° 26' 53" W	2.07
638 - 639	N 74° 49' 07" E	62.04

HIGHWAY	BASIS OF EXISTING R/W	WIDTH
W. NATIONAL AVE.	McKOWEN'S SUBDIVISION C.S.M. NO. 7972 CENTRAL IMPROVEMENTS CO. SUBDIVISION	66'
S. 73RD ST.	CENTRAL IMPROVEMENTS CO. SUBDIVISION	60'
S. 72ND ST.	GROSS WEST ALLIS ADDITION C.S.M. NO. 7972	60'

REVISION DATE 09/28/17 (NO CHANGES) 10/04/17 - PARCEL 80 REMOVED	DATE 08-15-2016	SCALE, FEET 0 20 40	HWY: NATIONAL AVENUE	R/W PROJECT NUMBER 2410-00-07	PLAT SHEET 4.08
GRID FACTOR			COUNTY: MILWAUKEE	CONSTRUCTION PROJECT NUMBER 2410-00-77	PS&E SHEET



CONCRETE MONUMENT
W/BRASS CAP
N=376,917.33
E=2,533,134.77



CONCRETE MONUMENT
W/BRASS CAP
N=377,003.41
E=2,535,730.54

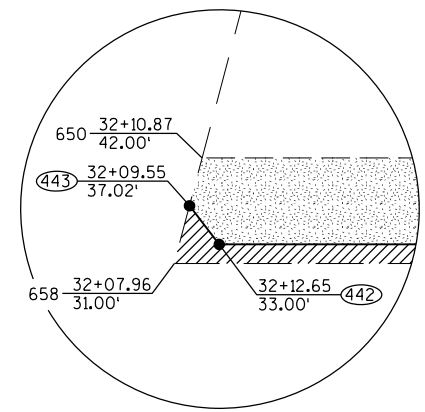
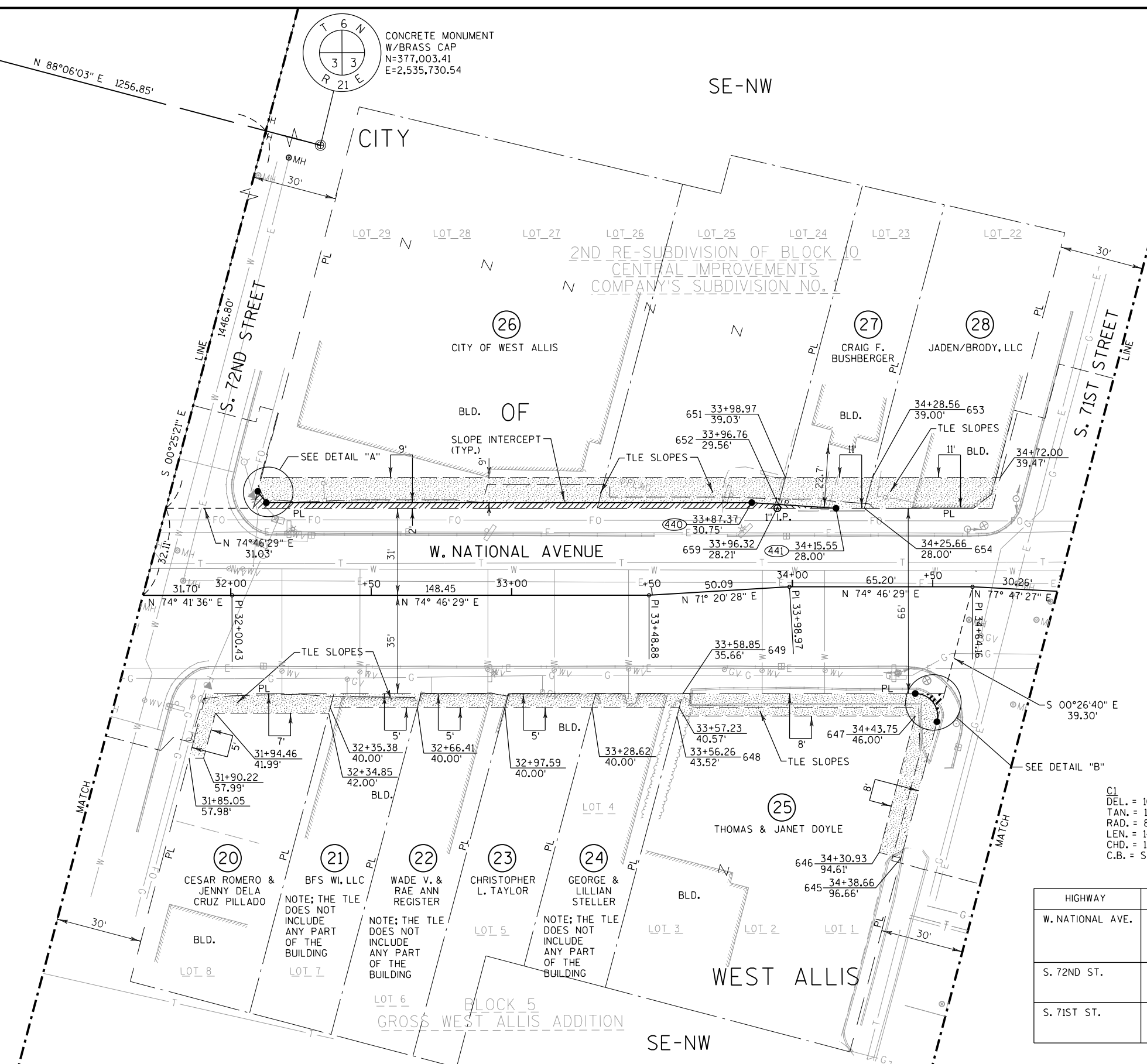


LINE TABLE

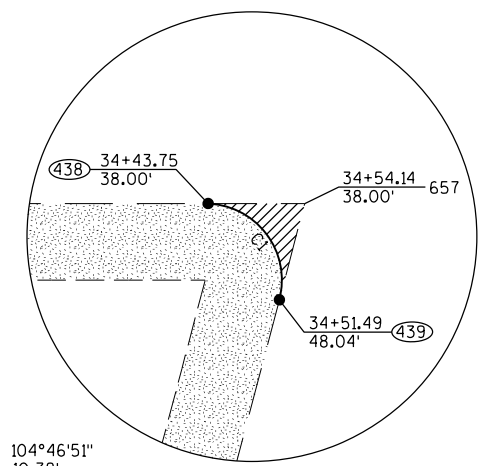
657-438	S 74° 46' 29" W	10.38'
439-657	N 00° 26' 40" W	10.38'
439-645	S 00° 26' 40" E	50.28'
645-646	S 89° 33' 20" W	8.00'
646-647	N 00° 26' 40" W	50.28'
647-648	S 74° 46' 29" W	84.81'
648-649	N 00° 26' 40" W	8.27'
649-438	N 74° 46' 29" E	82.70'
658-443	N 00° 25' 21" W	6.23'
443-442	S 52° 49' 26" E	5.08'
442-440	N 74° 46' 29" E	172.81'
440-652	N 78° 35' 20" E	9.46'
651-659	S 00° 27' 11" E	1.42'
659-658	S 74° 46' 29" W	186.58'
443-650	N 00° 25' 21" W	5.15'
650-651	N 74° 46' 29" E	186.57'
652-651	N 00° 27' 11" W	9.96'
652-440	S 78° 35' 20" W	9.46'
440-442	S 74° 46' 29" W	172.81'
442-443	N 52° 49' 26" W	5.08'
659-652	N 00° 27' 11" W	1.42'
652-441	S 78° 35' 20" E	20.60'
441-659	S 74° 46' 29" W	20.92'
651-652	S 00° 27' 11" E	9.96'
651-653	N 58° 46' 01" E	31.03'
653-654	S 00° 27' 11" E	11.38'
654-441	S 74° 46' 29" W	10.11'

4

4



DETAIL "A"
N.T.S.

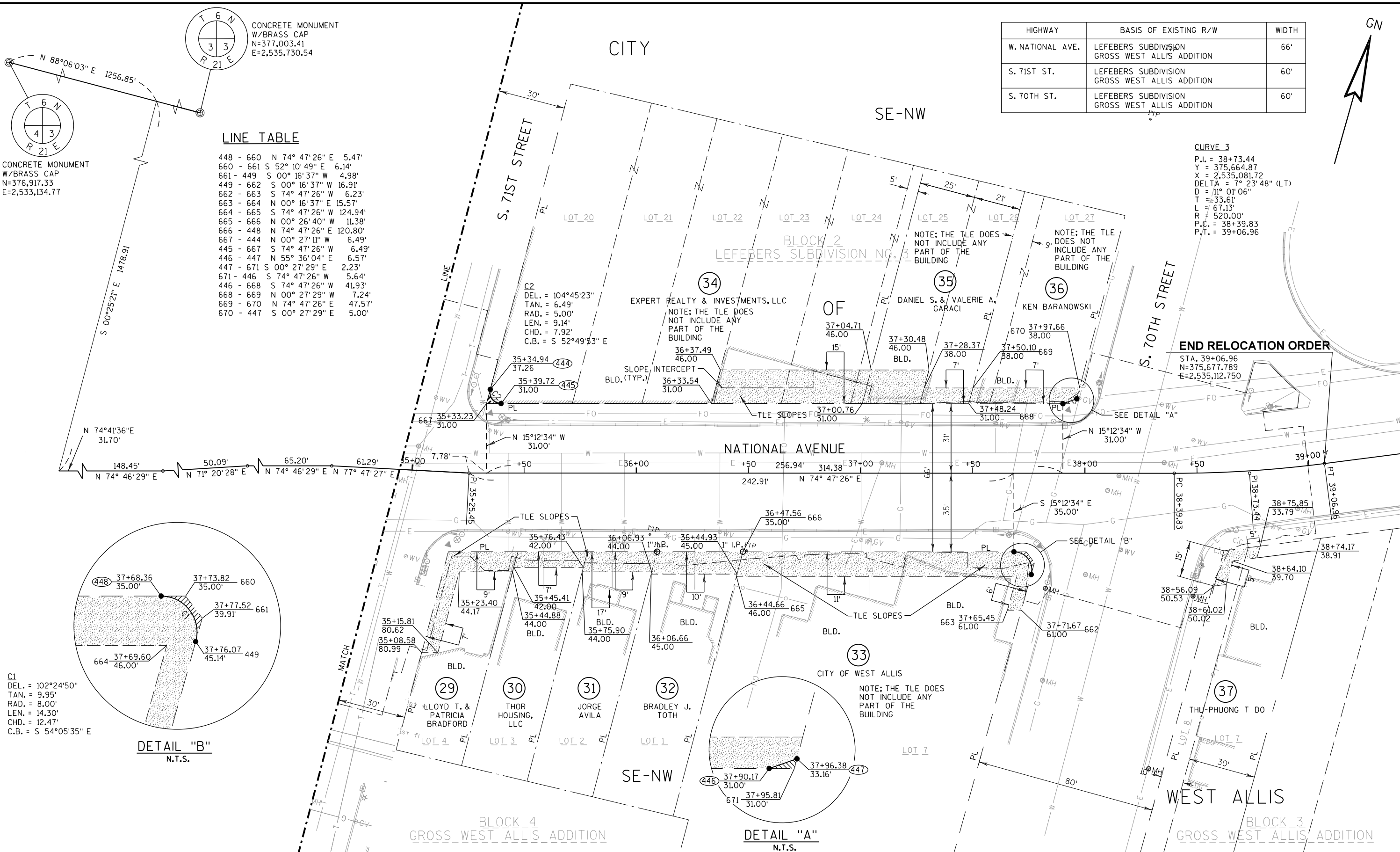


DETAIL "B"
N.T.S.

C1
DEL. = 104°46'51"
TAN. = 10.38'
RAD. = 8.00'
LEN. = 14.63'
CHD. = 12.68'
C.B. = S 52°50'06" E

HIGHWAY	BASIS OF EXISTING R/W	WIDTH
W. NATIONAL AVE.	2ND REDIVISION OF CENTRAL IMPROVEMENTS CO. SUBDIVISION GROSS WEST ALLIS ADDITION WEST ALLIS EXHIBIT Y-549	66'
S. 72ND ST.	2ND REDIVISION OF CENTRAL IMPROVEMENTS CO. SUBDIVISION GROSS WEST ALLIS ADDITION	60'
S. 71ST ST.	2ND REDIVISION OF CENTRAL IMPROVEMENTS CO. SUBDIVISION GROSS WEST ALLIS ADDITION	60'

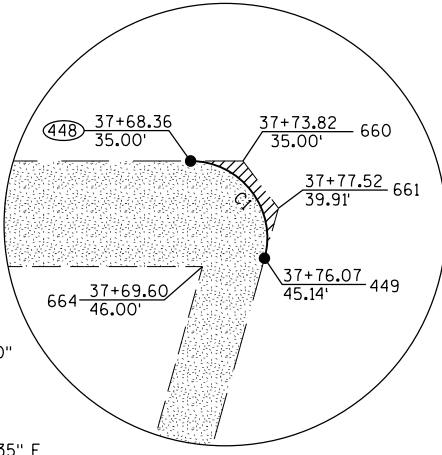
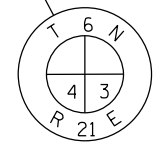
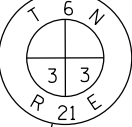
REVISION DATE 09/28/17 - REVISED STA/OFFSETS 10/04/17 (NO CHANGES)	DATE 08-15-2016	SCALE, FEET 0 20 40	HWY: NATIONAL AVENUE	R/W PROJECT NUMBER 2410-00-07	PLAT SHEET 4.09
GRID FACTOR			COUNTY: MILWAUKEE	CONSTRUCTION PROJECT NUMBER 2410-00-77	PS&E SHEET



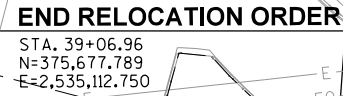
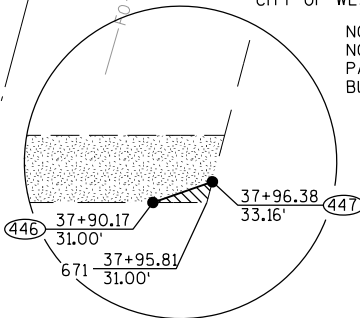
LINE TABLE

448 - 660	N 74° 47' 26" E	5.47'
660 - 661	S 52° 10' 49" E	6.14'
661 - 449	S 00° 16' 37" W	4.98'
449 - 662	S 00° 16' 37" W	16.91'
662 - 663	S 74° 47' 26" W	6.23'
663 - 664	N 00° 16' 37" E	15.57'
664 - 665	S 74° 47' 26" W	124.94'
665 - 666	N 00° 26' 40" W	11.38'
666 - 448	N 74° 47' 26" E	120.80'
667 - 444	N 00° 27' 11" W	6.49'
445 - 667	S 74° 47' 26" W	6.49'
446 - 447	N 55° 36' 04" E	6.57'
447 - 671	S 00° 27' 29" E	2.23'
671 - 446	S 74° 47' 26" W	5.64'
446 - 668	S 74° 47' 26" W	41.93'
668 - 669	N 00° 27' 29" W	7.24'
669 - 670	N 74° 47' 26" E	47.57'
670 - 447	S 00° 27' 29" E	5.00'

CONCRETE MONUMENT
W/BRASS CAP
N=376,917.33
E=2,533,134.77



C1
DEL. = 102°24'50"
TAN. = 9.95'
RAD. = 8.00'
LEN. = 14.30'
CHD. = 12.47'
C.B. = S 54°05'35" E



REVISION DATE 09/28/17 - REVISED STA/OFFSETS 10/04/17 (NO CHANGES)	DATE 08-15-2016	SCALE, FEET 0 20 40	HWY: NATIONAL AVENUE	R/W PROJECT NUMBER 2410-00-07	PLAT SHEET 4.10
GRID FACTOR			COUNTY: MILWAUKEE	CONSTRUCTION PROJECT NUMBER 2410-00-77	PS&E SHEET