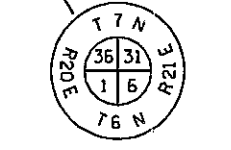


**BEGIN PROJECT**  
**STA. 433+40.00**  
 BEGIN MILL AND OVERLAY  
 SEE BUTT JOINT DETAIL  
 MATCH EXISTING

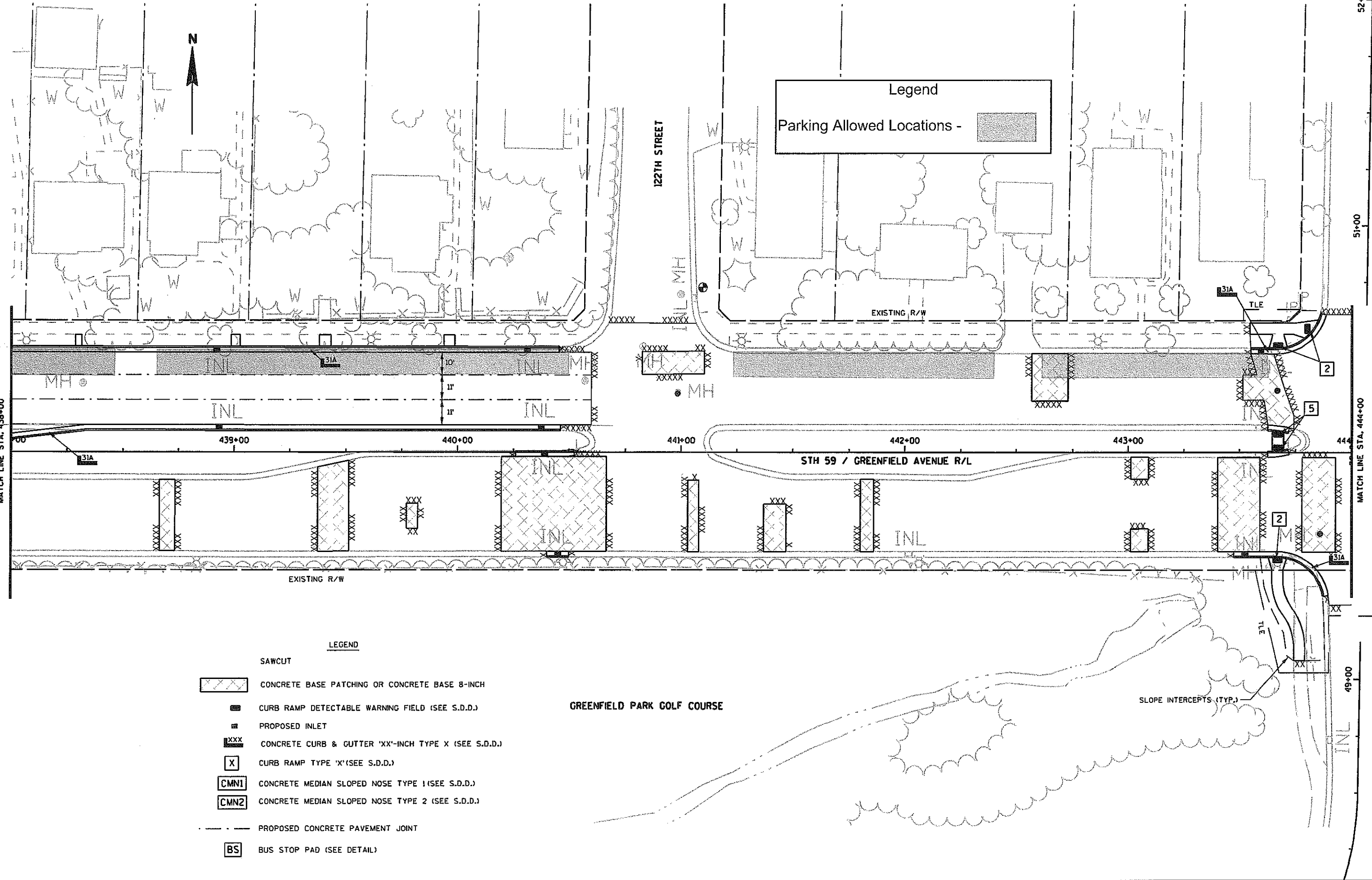
**Legend**  
 Parking Allowed Locations - [shaded box]

- LEGEND**
- XXXXX SAWCUT
  - [hatched box] CONCRETE BASE PATCHING OR CONCRETE BASE 8-INCH
  - [dotted box] CURB RAMP DETECTABLE WARNING FIELD (SEE S.D.D.)
  - [square with dot] PROPOSED INLET
  - [square with XXX] CONCRETE CURB & GUTTER 'XX'-INCH TYPE X (SEE S.D.D.)
  - [square with X] CURB RAMP TYPE 'X' (SEE S.D.D.)
  - [square with CMN1] CONCRETE MEDIAN SLOPED NOSE TYPE 1 (SEE S.D.D.)
  - [square with CMN2] CONCRETE MEDIAN SLOPED NOSE TYPE 2 (SEE S.D.D.)
  - [dashed line] PROPOSED CONCRETE PAVEMENT JOINT
  - [square with BS] BUS STOP PAD (SEE DETAIL)



SECTION CORNER TO BE REPLACED BY SEWRPC

GREENFIELD PARK GOLF COURSE



Legend  
 Parking Allowed Locations - [shaded box]

**LEGEND**

- [diagonal lines] SAWCUT
- [cross-hatch] CONCRETE BASE PATCHING OR CONCRETE BASE 8-INCH
- [dotted] CURB RAMP DETECTABLE WARNING FIELD (SEE S.D.D.)
- [square with 'I'] PROPOSED INLET
- [cross-hatch with 'X'] CONCRETE CURB & GUTTER 'XX'-INCH TYPE X (SEE S.D.D.)
- [square with 'X'] CURB RAMP TYPE 'X' (SEE S.D.D.)
- [square with 'CMN1'] CONCRETE MEDIAN SLOPED NOSE TYPE 1 (SEE S.D.D.)
- [square with 'CMN2'] CONCRETE MEDIAN SLOPED NOSE TYPE 2 (SEE S.D.D.)
- [dashed line] PROPOSED CONCRETE PAVEMENT JOINT
- [square with 'BS'] BUS STOP PAD (SEE DETAIL)

GREENFIELD PARK GOLF COURSE

SLOPE INTERCEPTS (TYP.)



Legend  
 Parking Allowed Locations -

FILLER CAPS  
 CANOPY

SIGN

EXISTING R/W

120TH STREET

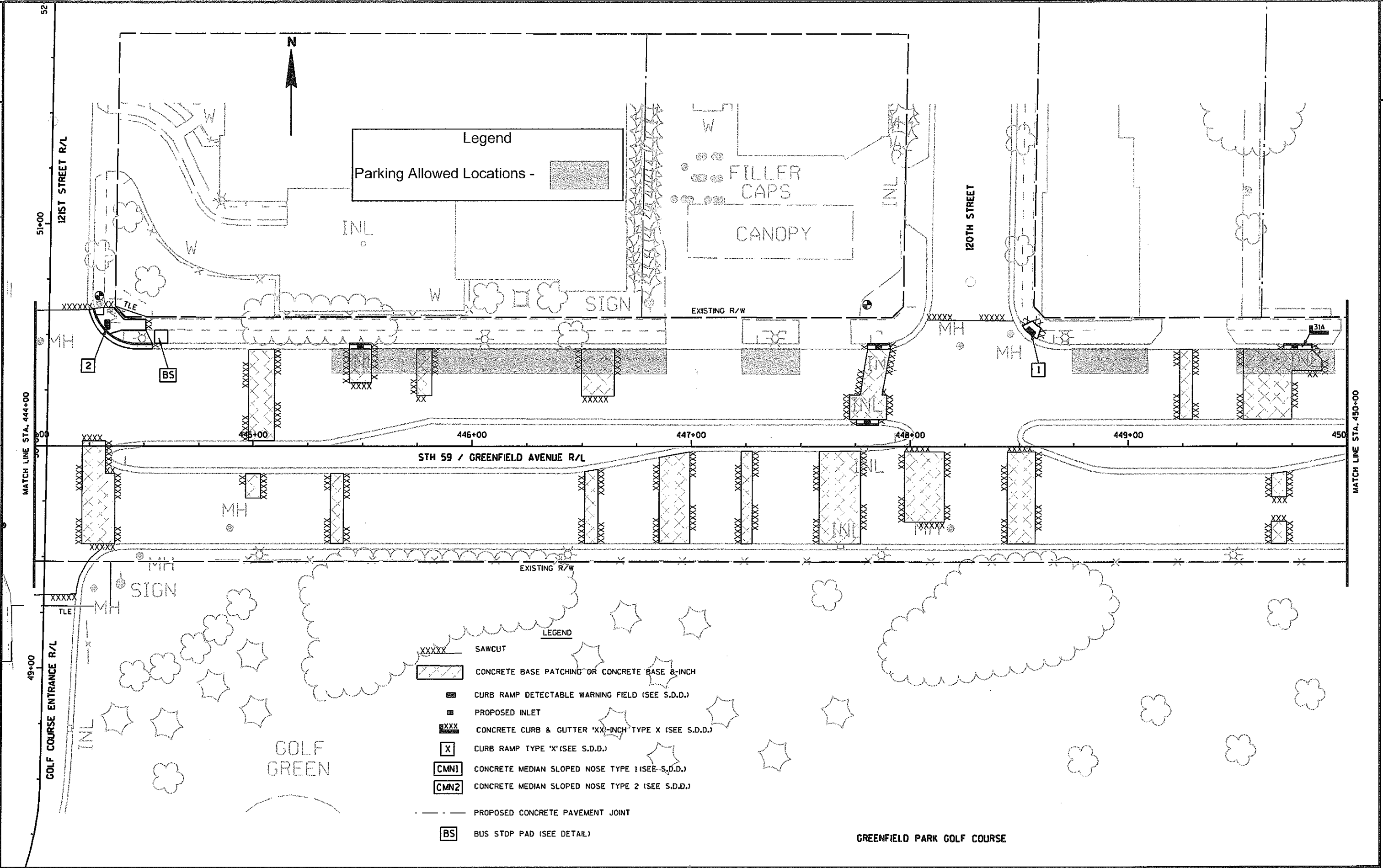
STH 59 / GREENFIELD AVENUE R/L

EXISTING R/W

GOLF GREEN

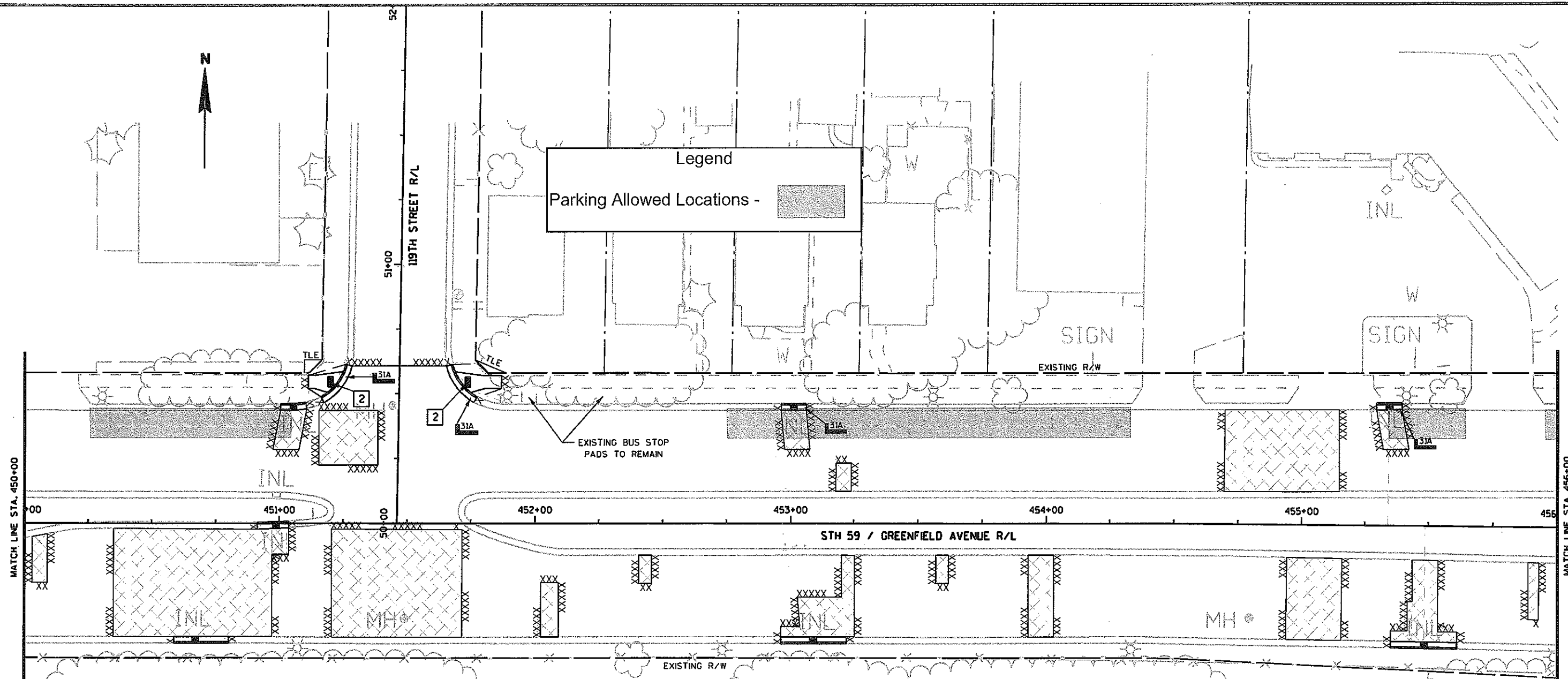
GREENFIELD PARK GOLF COURSE

- LEGEND
- SAWCUT
  - CONCRETE BASE PATCHING OR CONCRETE BASE 8-INCH
  - CURB RAMP DETECTABLE WARNING FIELD (SEE S.D.D.)
  - PROPOSED INLET
  - CONCRETE CURB & GUTTER 'XX'-INCH TYPE X (SEE S.D.D.)
  - CURB RAMP TYPE 'X' (SEE S.D.D.)
  - CONCRETE MEDIAN SLOPED NOSE TYPE 1 (SEE S.D.D.)
  - CONCRETE MEDIAN SLOPED NOSE TYPE 2 (SEE S.D.D.)
  - PROPOSED CONCRETE PAVEMENT JOINT
  - BUS STOP PAD (SEE DETAIL)





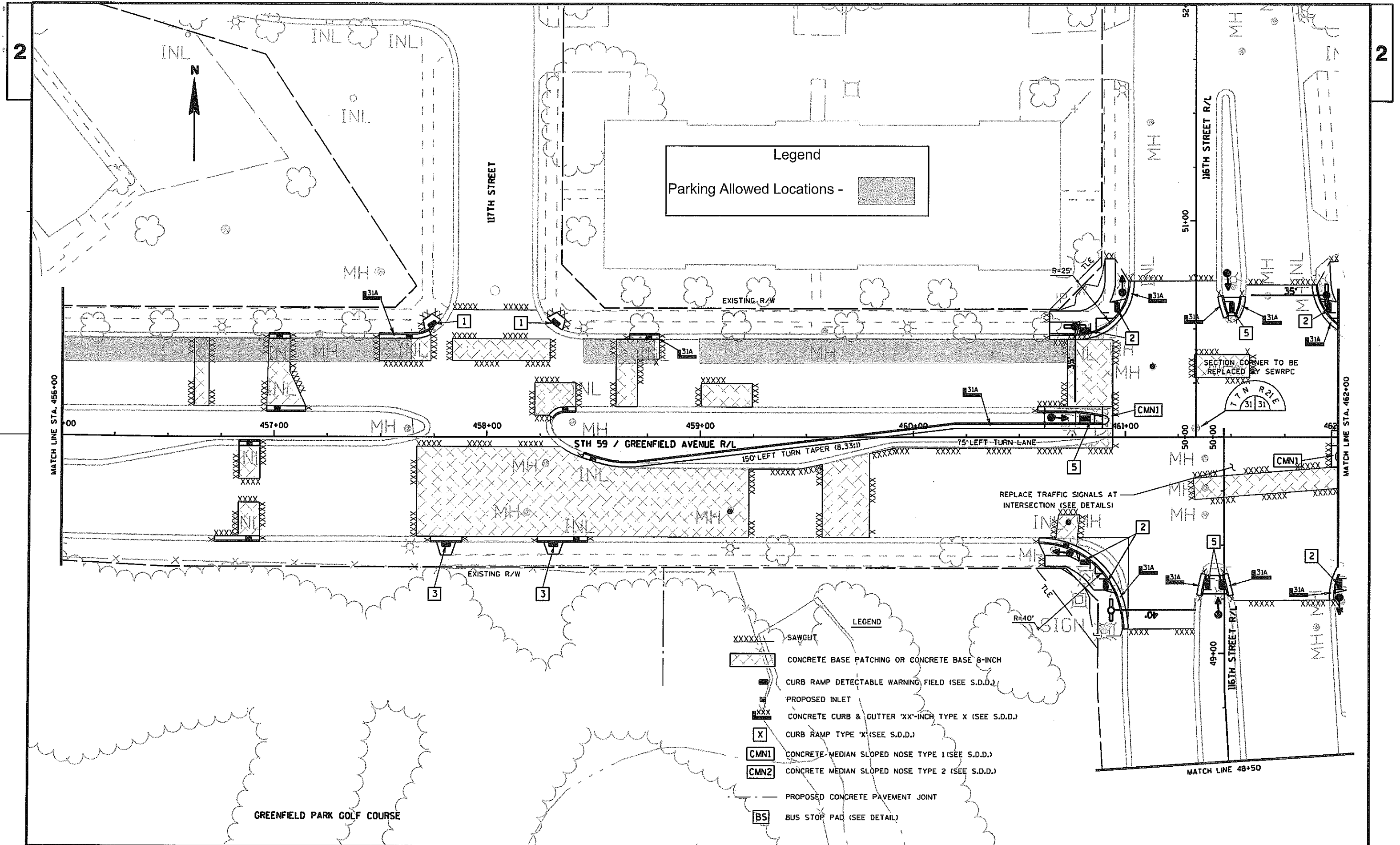
Legend  
 Parking Allowed Locations - [shaded box]



LEGEND

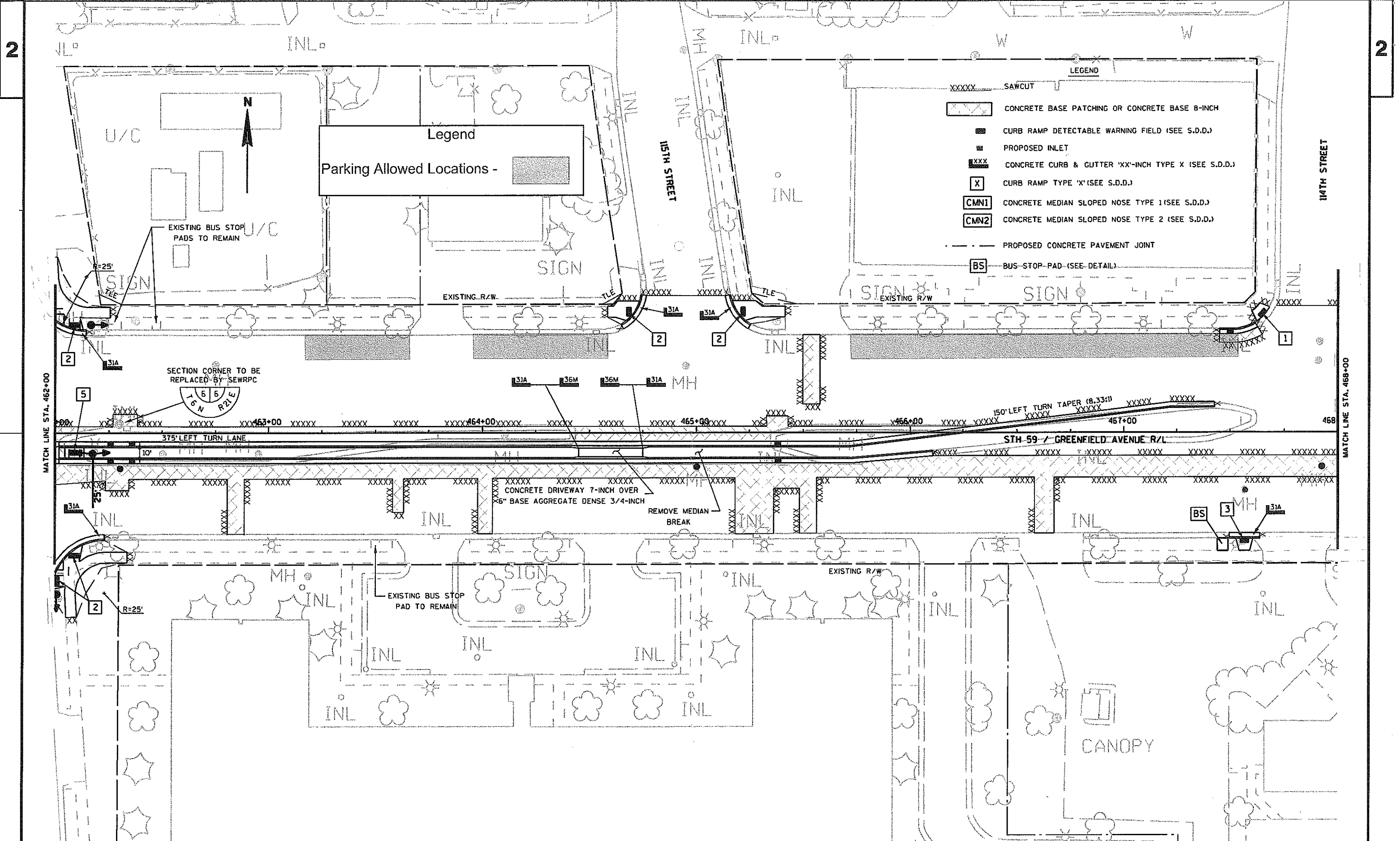
- XXXXX SAWCUT
- [diagonal hatching] CONCRETE BASE PATCHING OR CONCRETE BASE 8-INCH
- [grid pattern] CURB RAMP DETECTABLE WARNING FIELD (SEE S.D.D.)
- [square with 'I'] PROPOSED INLET
- [hatched box] CONCRETE CURB & GUTTER 'XX'-INCH TYPE X (SEE S.D.D.)
- [square with 'X'] CURB RAMP TYPE 'X'(SEE S.D.D.)
- [square with 'CMN1'] CONCRETE MEDIAN SLOPED NOSE TYPE 1(SEE S.D.D.)
- [square with 'CMN2'] CONCRETE MEDIAN SLOPED NOSE TYPE 2 (SEE S.D.D.)
- [dashed line] PROPOSED CONCRETE PAVEMENT JOINT
- [square with 'BS'] BUS STOP PAD (SEE DETAIL)

GREENFIELD PARK GOLF COURSE



Legend  
 Parking Allowed Locations - [shaded box]

- LEGEND
- XXXXXX SAWCUT
  - [hatched box] CONCRETE BASE PATCHING OR CONCRETE BASE 8-INCH
  - [dashed box] CURB RAMP DETECTABLE WARNING FIELD (SEE S.D.D.)
  - [square with dot] PROPOSED INLET
  - [line with 'x'] CONCRETE CURB & GUTTER 'XX'-INCH TYPE X (SEE S.D.D.)
  - [square with 'x'] CURB RAMP TYPE 'X' (SEE S.D.D.)
  - [square with 'CMN1'] CONCRETE-MEDIAN SLOPED NOSE TYPE 1 (SEE S.D.D.)
  - [square with 'CMN2'] CONCRETE-MEDIAN SLOPED NOSE TYPE 2 (SEE S.D.D.)
  - [dashed line] PROPOSED CONCRETE PAVEMENT JOINT
  - [square with 'BS'] BUS STOP PAD (SEE DETAIL)



Legend  
 Parking Allowed Locations - [shaded rectangle]

- LEGEND
- XXXXX SAWCUT
  - [hatched box] CONCRETE BASE PATCHING OR CONCRETE BASE 8-INCH
  - [dashed box] CURB RAMP DETECTABLE WARNING FIELD (SEE S.D.D.)
  - [square with 'X'] PROPOSED INLET
  - [line with 'XXX'] CONCRETE CURB & GUTTER 'XX'-INCH TYPE X (SEE S.D.D.)
  - [square with 'X'] CURB RAMP TYPE 'X' (SEE S.D.D.)
  - [square with 'CMN1'] CONCRETE MEDIAN SLOPED NOSE TYPE 1 (SEE S.D.D.)
  - [square with 'CMN2'] CONCRETE MEDIAN SLOPED NOSE TYPE 2 (SEE S.D.D.)
  - [dashed line] PROPOSED CONCRETE PAVEMENT JOINT
  - [square with 'BS'] BUS-STOP-PAD (SEE-DETAIL)

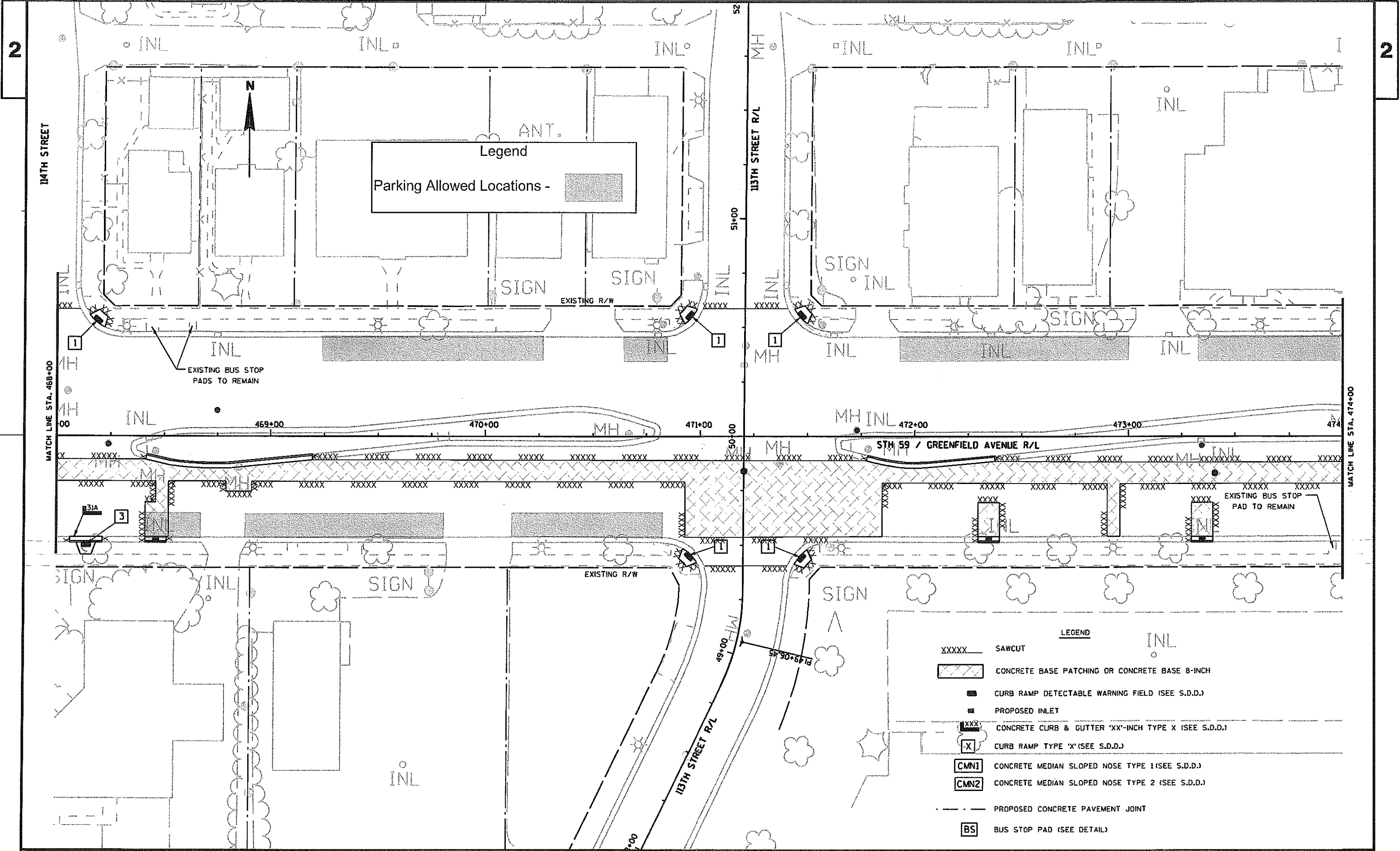


31A 36M 36M 31A MH

XXXXX CONCRETE DRIVEWAY 7-INCH OVER  
 6" BASE AGGREGATE DENSE 3/4-INCH

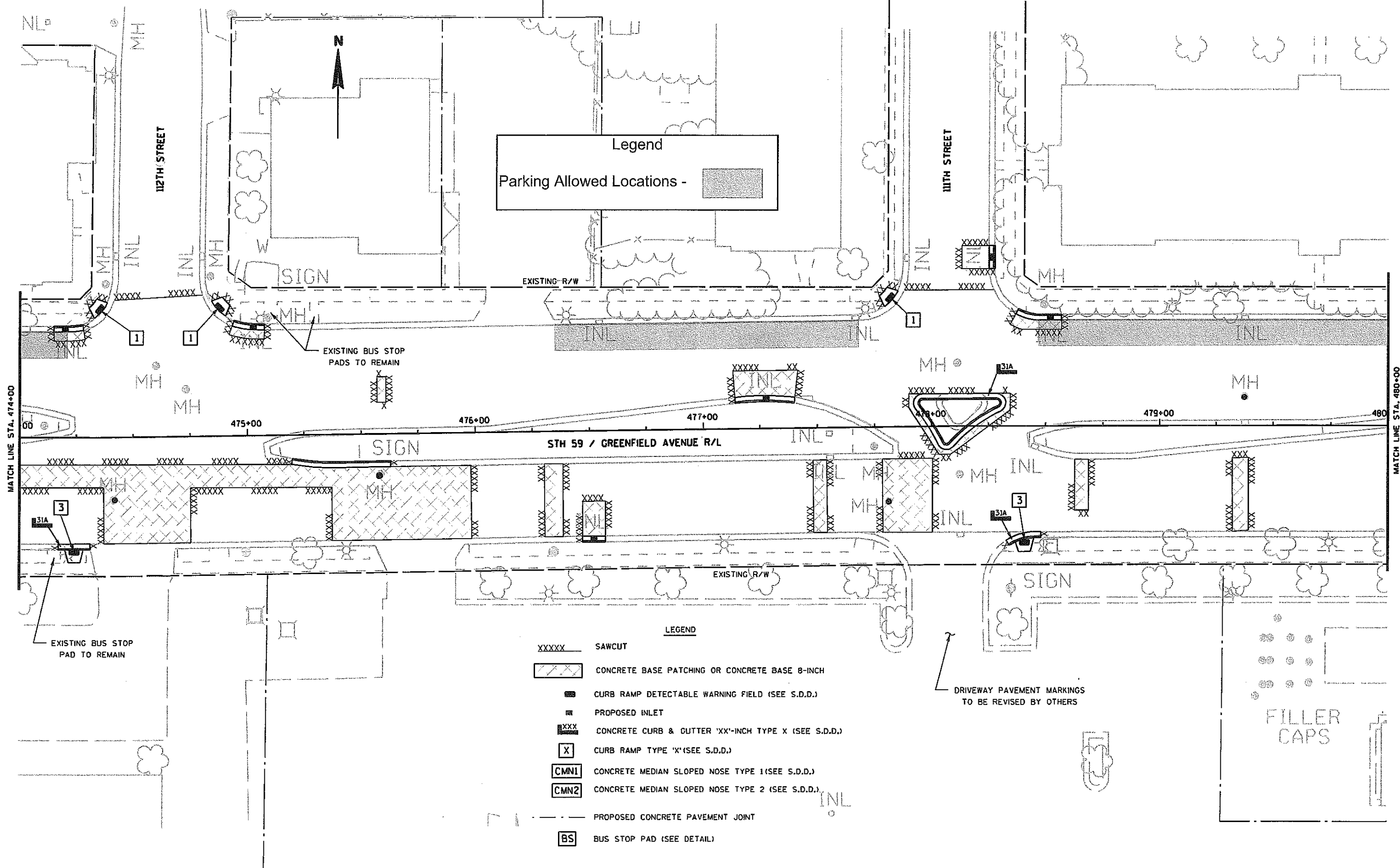
REMOVE MEDIAN  
 BREAK

CANOPY



Legend  
 Parking Allowed Locations - [shaded box]

- LEGEND**
- XXXXX SAWCUT
  - [hatched box] CONCRETE BASE PATCHING OR CONCRETE BASE 8-INCH
  - [shaded box] CURB RAMP DETECTABLE WARNING FIELD (SEE S.D.D.)
  - [square with dot] PROPOSED INLET
  - [line with 'x'] CONCRETE CURB & GUTTER 'XX'-INCH TYPE X (SEE S.D.D.)
  - [square with 'x'] CURB RAMP TYPE 'X' (SEE S.D.D.)
  - [square with 'CM1'] CONCRETE MEDIAN SLOPED NOSE TYPE 1 (SEE S.D.D.)
  - [square with 'CM2'] CONCRETE MEDIAN SLOPED NOSE TYPE 2 (SEE S.D.D.)
  - [dashed line] PROPOSED CONCRETE PAVEMENT JOINT
  - [square with 'BS'] BUS STOP PAD (SEE DETAIL)

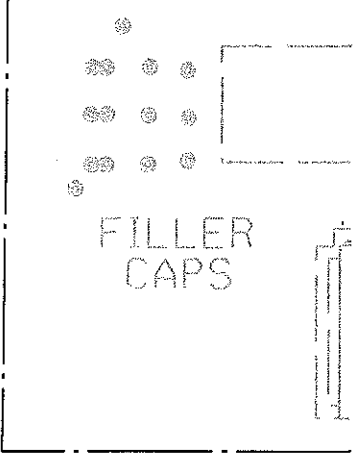


Legend  
 Parking Allowed Locations - [shaded box]

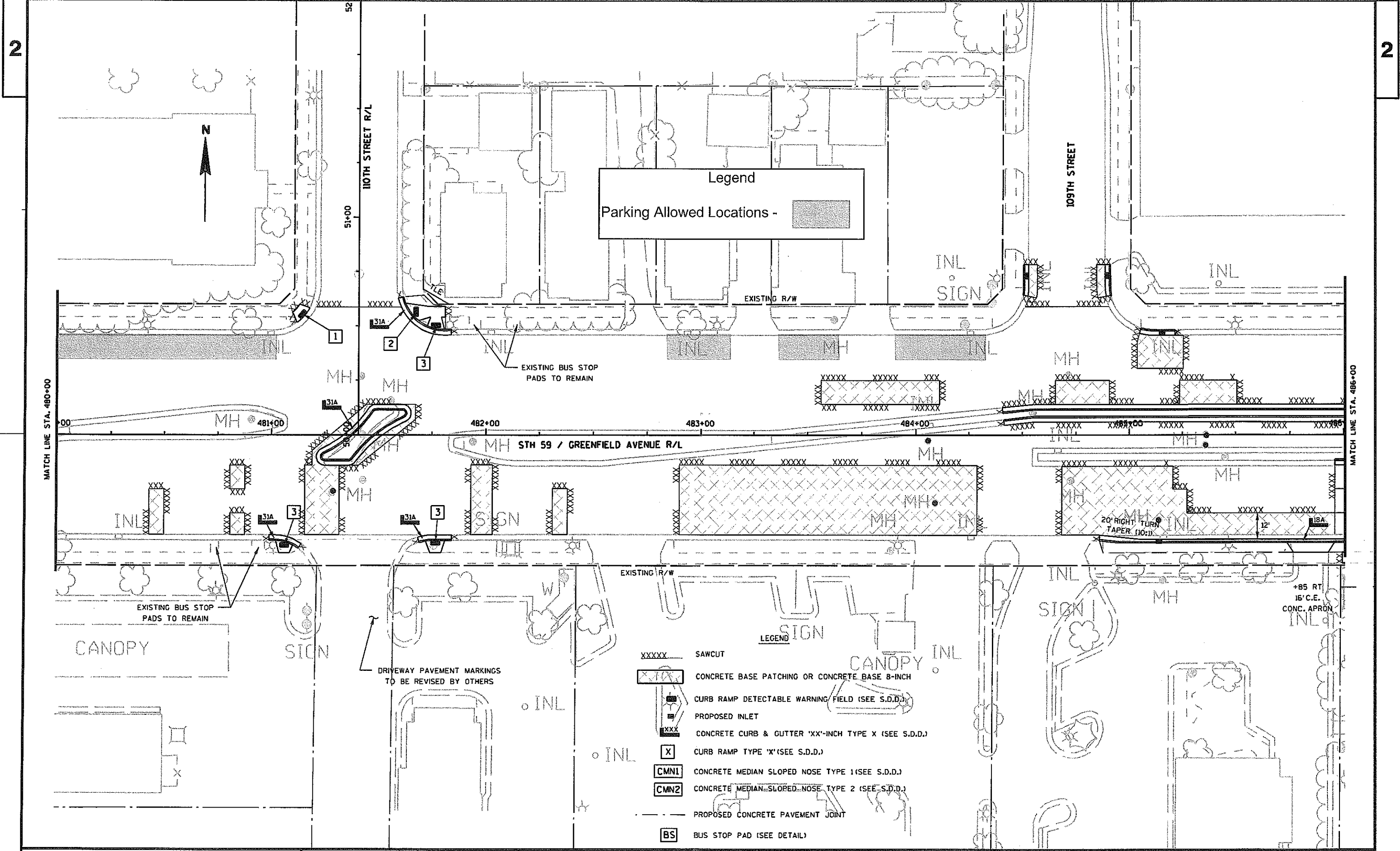
LEGEND

- XXXXX SAWCUT
- [diagonal lines] CONCRETE BASE PATCHING OR CONCRETE BASE 8-INCH
- [dotted pattern] CURB RAMP DETECTABLE WARNING FIELD (SEE S.D.D.)
- [square with 'I'] PROPOSED INLET
- [square with 'XXX'] CONCRETE CURB & GUTTER 'XX'-INCH TYPE X (SEE S.D.D.)
- [square with 'X'] CURB RAMP TYPE 'X' (SEE S.D.D.)
- [square with 'CMN1'] CONCRETE MEDIAN SLOPED NOSE TYPE 1 (SEE S.D.D.)
- [square with 'CMN2'] CONCRETE MEDIAN SLOPED NOSE TYPE 2 (SEE S.D.D.)
- [dashed line] PROPOSED CONCRETE PAVEMENT JOINT
- [square with 'BS'] BUS STOP PAD (SEE DETAIL)

DRIVEWAY PAVEMENT MARKINGS  
 TO BE REVISED BY OTHERS







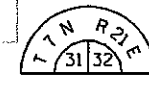
Legend  
 Parking Allowed Locations - [shaded box symbol]

- LEGEND
- XXXXX SAWCUT
  - [shaded box symbol] CONCRETE BASE PATCHING OR CONCRETE BASE 8-INCH
  - [curb ramp symbol] CURB RAMP DETECTABLE WARNING FIELD (SEE S.D.D.)
  - [inlet symbol] PROPOSED INLET
  - [curb & gutter symbol] CONCRETE CURB & GUTTER 'XX'-INCH TYPE X (SEE S.D.D.)
  - [curb ramp 'x' symbol] CURB RAMP TYPE 'X' (SEE S.D.D.)
  - [CMN1 symbol] CONCRETE MEDIAN SLOPED NOSE TYPE 1 (SEE S.D.D.)
  - [CMN2 symbol] CONCRETE MEDIAN SLOPED NOSE TYPE 2 (SEE S.D.D.)
  - [dashed line symbol] PROPOSED CONCRETE PAVEMENT JOINT
  - [BS symbol] BUS STOP PAD (SEE DETAIL)

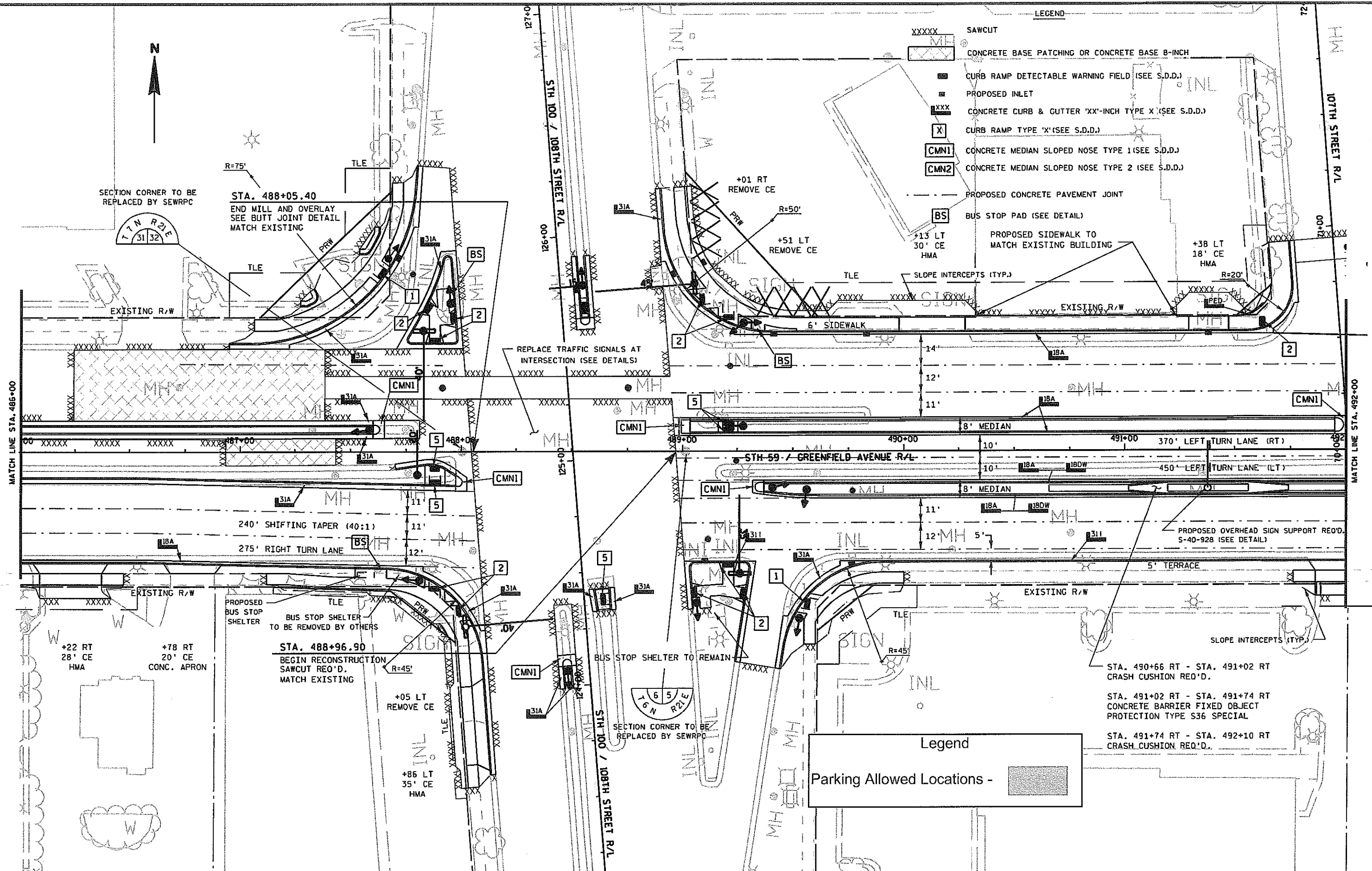


SECTION CORNER TO BE REPLACED BY SEWRPC

STA. 488+05.40  
END MILL AND OVERLAY  
SEE BUTT JOINT DETAIL  
MATCH EXISTING

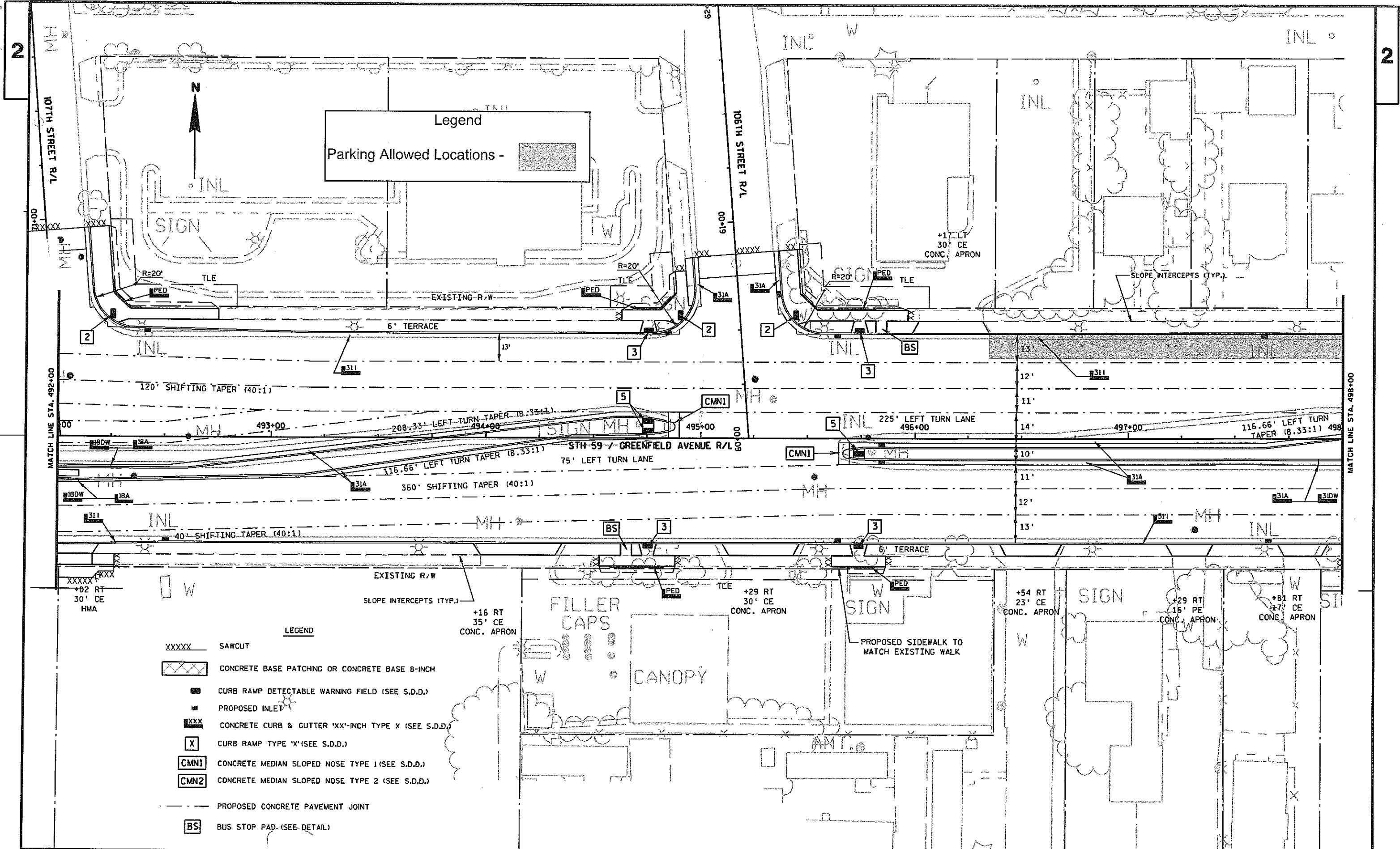


- LEGEND
- XXXXX SAWCUT
  - CONCRETE BASE PATCHING OR CONCRETE BASE 8-INCH
  - CURB RAMP DETECTABLE WARNING FIELD (SEE S.D.D.)
  - PROPOSED INLET
  - CONCRETE CURB & GUTTER 'XX'-INCH TYPE X (SEE S.D.D.)
  - CURB RAMP TYPE 'X' (SEE S.D.D.)
  - CMN1 CONCRETE MEDIAN SLOPED NOSE TYPE 1 (SEE S.D.D.)
  - CMN2 CONCRETE MEDIAN SLOPED NOSE TYPE 2 (SEE S.D.D.)
  - PROPOSED CONCRETE PAVEMENT JOINT
  - BS BUS STOP PAD (SEE DETAIL)
  - PROPOSED SIDEWALK TO MATCH EXISTING BUILDING
  - SLOPE INTERCEPTS (TYP.)
  - PROPOSED OVERHEAD SIGN SUPPORT REQ'D. S-40-928 (SEE DETAIL)



Legend

Parking Allowed Locations -



Legend  
 Parking Allowed Locations - [shaded box]

- LEGEND**
- XXXXX SAWCUT
  - [hatched box] CONCRETE BASE PATCHING OR CONCRETE BASE 8-INCH
  - [square with dot] CURB RAMP DETECTABLE WARNING FIELD (SEE S.D.D.)
  - [square with 'I'] PROPOSED INLET
  - [square with 'XXX'] CONCRETE CURB & GUTTER 'XX'-INCH TYPE X (SEE S.D.D.)
  - [square with 'X'] CURB RAMP TYPE 'X' (SEE S.D.D.)
  - [square with 'CMN1'] CONCRETE MEDIAN SLOPED NOSE TYPE 1 (SEE S.D.D.)
  - [square with 'CMN2'] CONCRETE MEDIAN SLOPED NOSE TYPE 2 (SEE S.D.D.)
  - [dashed line] PROPOSED CONCRETE PAVEMENT JOINT
  - [square with 'BS'] BUS STOP PAD (SEE-DETAIL)

PROJECT NO: 2230-14-70

HWY: STH 59

COUNTY: MILWAUKEE

PLAN DETAILS

SHEET

E

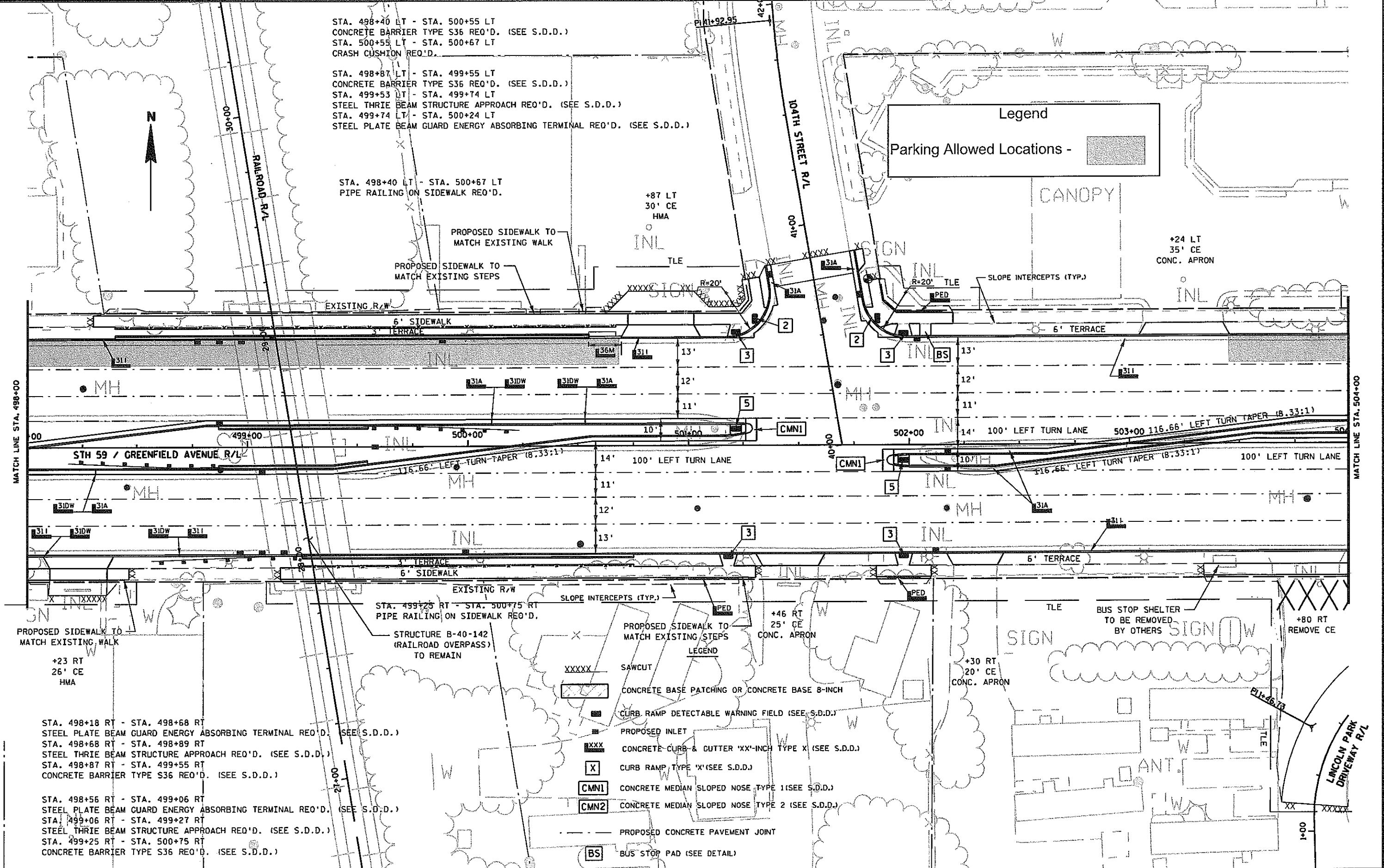
STA. 498+40 LT - STA. 500+55 LT  
 CONCRETE BARRIER TYPE S36 REQ'D. (SEE S.D.D.)  
 STA. 500+55 LT - STA. 500+67 LT  
 CRASH CUSHION REQ'D.

STA. 498+87 LT - STA. 499+55 LT  
 CONCRETE BARRIER TYPE S36 REQ'D. (SEE S.D.D.)  
 STA. 499+53 LT - STA. 499+74 LT  
 STEEL THRIE BEAM STRUCTURE APPROACH REQ'D. (SEE S.D.D.)  
 STA. 499+74 LT - STA. 500+24 LT  
 STEEL PLATE BEAM GUARD ENERGY ABSORBING TERMINAL REQ'D. (SEE S.D.D.)

STA. 498+40 LT - STA. 500+67 LT  
 PIPE RAILING ON SIDEWALK REQ'D.

**Legend**

Parking Allowed Locations - [Hatched Box]



+23 RT  
 26' CE  
 HMA

STA. 498+18 RT - STA. 498+68 RT  
 STEEL PLATE BEAM GUARD ENERGY ABSORBING TERMINAL REQ'D. (SEE S.D.D.)  
 STA. 498+68 RT - STA. 498+89 RT  
 STEEL THRIE BEAM STRUCTURE APPROACH REQ'D. (SEE S.D.D.)  
 STA. 498+87 RT - STA. 499+55 RT  
 CONCRETE BARRIER TYPE S36 REQ'D. (SEE S.D.D.)

STA. 498+56 RT - STA. 499+06 RT  
 STEEL PLATE BEAM GUARD ENERGY ABSORBING TERMINAL REQ'D. (SEE S.D.D.)  
 STA. 499+06 RT - STA. 499+27 RT  
 STEEL THRIE BEAM STRUCTURE APPROACH REQ'D. (SEE S.D.D.)  
 STA. 499+25 RT - STA. 500+75 RT  
 CONCRETE BARRIER TYPE S36 REQ'D. (SEE S.D.D.)

STA. 499+25 RT - STA. 500+75 RT  
 PIPE RAILING ON SIDEWALK REQ'D.

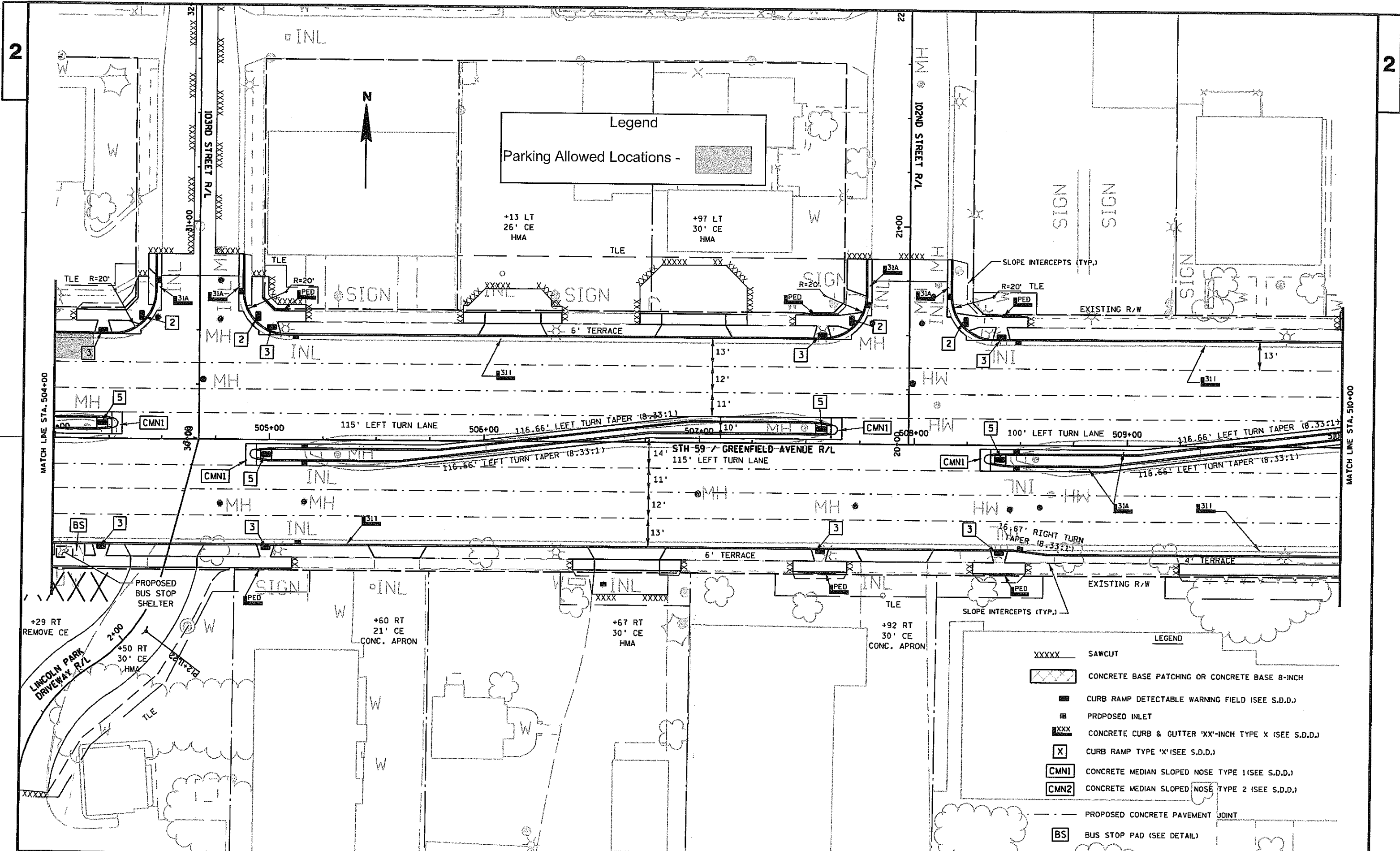
PROPOSED SIDEWALK TO MATCH EXISTING WALK  
 SLOPE INTERCEPTS (TYP.)  
 LEGEND

- XXXXX SAWCUT
- [Hatched Box] CONCRETE BASE PATCHING OR CONCRETE BASE 8-INCH
- [Dashed Box] CURB RAMP DETECTABLE WARNING FIELD (SEE S.D.D.)
- [Solid Box] PROPOSED INLET
- [XXX] CONCRETE CURB & GUTTER 'XX'-INCH TYPE X (SEE S.D.D.)
- [X] CURB RAMP TYPE 'X' (SEE S.D.D.)
- [CMN1] CONCRETE MEDIAN SLOPED NOSE TYPE 1 (SEE S.D.D.)
- [CMN2] CONCRETE MEDIAN SLOPED NOSE TYPE 2 (SEE S.D.D.)
- [Dashed Line] PROPOSED CONCRETE PAVEMENT JOINT
- [BS] BUS STOP PAD (SEE DETAIL)

+30 RT  
 20' CE  
 CONC. APRON

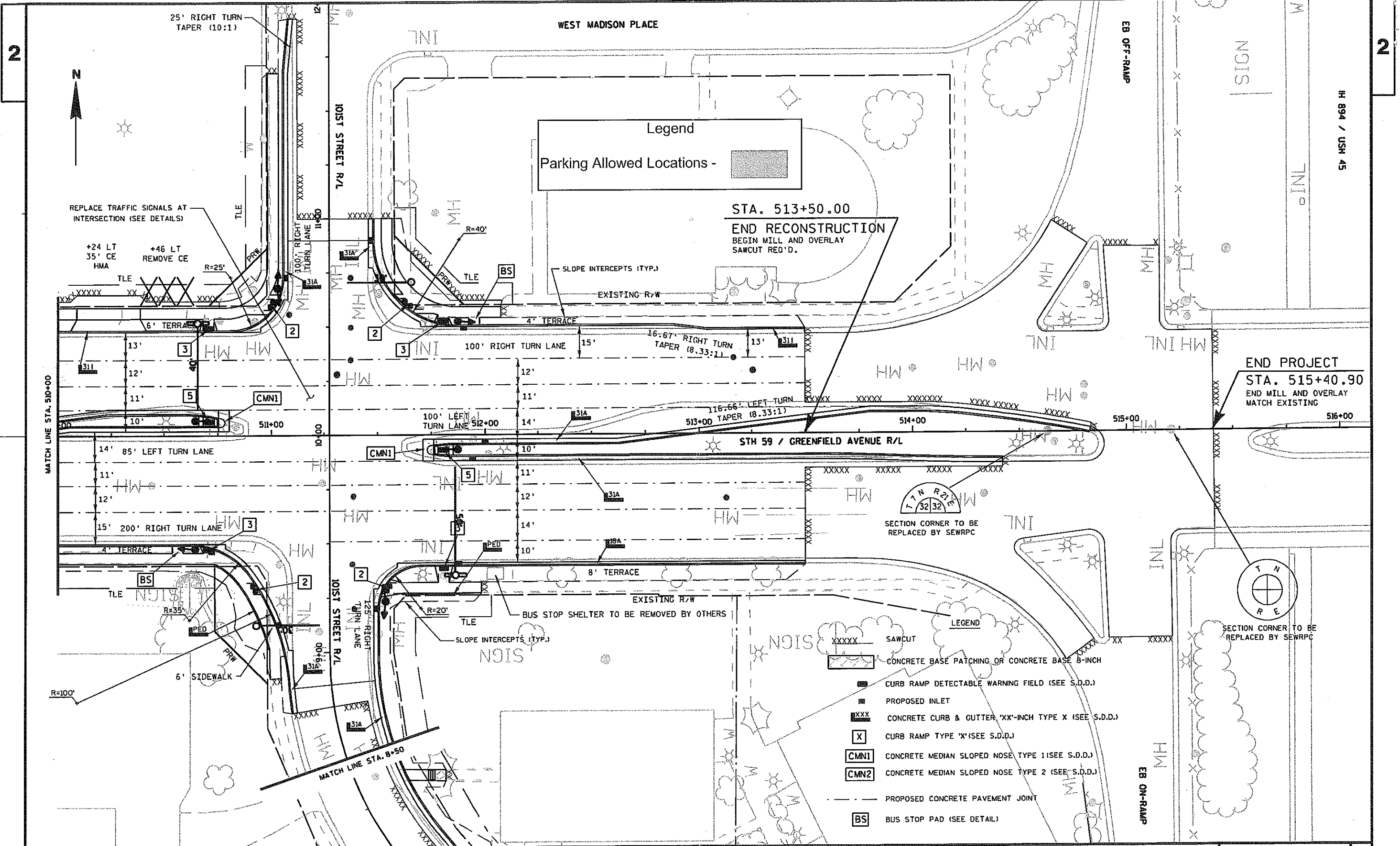
BUS STOP SHELTER  
 TO BE REMOVED  
 BY OTHERS

+80 RT  
 REMOVE CE



Legend  
 Parking Allowed Locations - [shaded box symbol]

- LEGEND
- XXXXX SAWCUT
  - [hatched box] CONCRETE BASE PATCHING OR CONCRETE BASE 8-INCH
  - [dashed box] CURB RAMP DETECTABLE WARNING FIELD (SEE S.D.D.)
  - [square with dot] PROPOSED INLET
  - [line with 'x'] CONCRETE CURB & GUTTER 'XX'-INCH TYPE X (SEE S.D.D.)
  - [square with 'x'] CURB RAMP TYPE 'X' (SEE S.D.D.)
  - [square with 'CMN1'] CONCRETE MEDIAN SLOPED NOSE TYPE 1 (SEE S.D.D.)
  - [square with 'CMN2'] CONCRETE MEDIAN SLOPED NOSE TYPE 2 (SEE S.D.D.)
  - [dashed line] PROPOSED CONCRETE PAVEMENT JOINT
  - [square with 'BS'] BUS STOP PAD (SEE DETAIL)



2

2

HW 894 / USH 45

PROJECT NO: 2230-14-70

HWY: STH 59

COUNTY: MILWAUKEE

PLAN DETAILS

SHEET

E

FILE NAME : g:\wdotse\wse200908\dgn\021214\_pd.dgn

PLOT DATE : 4/4/2011

PLOT BY : KL Engineering

PLOT NAME :

PLOT SCALE :

WISDOT/CADDs SHEET 42