

RELOCATION ORDER

RE3006 LPA-8/97

Project 2410-00-76	Name of Road W. National Avenue	Highway	County Milwaukee
Right of Way Plat Date 10/04/2016	Plat Sheet Numbers 4.01- 4.06	Date of Previously Approved Relocation Order N/A	

Description of Termini of Project

SITE LOCATION

Beginning at a point 60 feet north of and 1,003 feet west of the Southwest corner of Section 5, T6N, R21E in the City of West Allis, Milwaukee County, Wisconsin and continuing northeasterly to a point 807 feet north of and 13 feet east of the Southeast corner of Section 5, T6N, R21E in the City of West Allis, Milwaukee County, Wisconsin as shown on the plat of right of way or a copy thereof marked:

W. National Avenue (S. 95th Street to S. 92nd Street), Milwaukee County.

To properly establish, lay out, widen, enlarge, extend, construct, reconstruct, improve, or maintain a portion of the roadway designated above, it is necessary to relocate or change and acquire certain lands or interests in lands as shown on the right of way plat for the above project.

To effect this change, pursuant to authority granted under Sections 62.22 and 32.05(1), Wisconsin Statutes, the City of West Allis orders that:

1. The said road is laid out and established to the lines and widths as shown on the plat.
2. The required lands or interests in lands as shown on the plat shall be acquired by the City of West Allis.
3. This order supersedes and amends any previous order issued by the the City of West Allis.


Dan Devine

10/6/16
(Date)


Monica Schultz

10/4/16
(Date)

Mayor
(Title)

City Clerk
(Title)

SCHEDULE OF LANDS & INTERESTS REQUIRED

OWNERS' NAMES ARE SHOWN FOR REFERENCE
PURPOSED ONLY AND ARE SUBJECT TO CHANGE
PRIOR TO THE TRANSFER OF LAND INTERESTS
TO THE DEPARTMENT.

PARCEL NUMBER	SHEET NUMBER	OWNER	INTEREST REQUIRED	TOTAL ACRES	NEW	EXISTING	TOTAL	REMAINING ACRES	TEMP. ACRES	PERM. ACRES	PARCEL NUMBER
1	4.04	National Avenue Investments, LLC	FEE, TLE	0.203	0.001	0.000	0.001	0.202	0.001	0.000	1
2	4.04	James & Stephanie Besson	FEE, TLE	0.481	0.004	0.000	0.004	0.477	0.025	0.000	2
3	4.04	Konstantine S. George, Sam P. Neseemann, Thomas C. Pagedas	FEE, TLE	0.735	0.007	0.000	0.007	0.728	0.106	0.000	3
4	4.05	Philip Shovers, d/b/a Orthopedic Medical Building Co.	FEE, TLE	0.122	0.001	0.000	0.001	0.121	0.020	0.000	4
5	4.05	John Peiler	FEE, TLE	0.126	0.001	0.000	0.001	0.125	0.016	0.000	5
6	4.05	William J. Radtke, Katelyn A. Morkin	FEE, TLE	0.129	0.001	0.000	0.001	0.128	0.022	0.000	6
7	4.05	Randy Eldien	FEE, TLE	0.281	0.002	0.000	0.002	0.279	0.018	0.000	7
8	4.05	John M. Heuer, Kristen Faghtand Pezewski, Lisa K. Johnson	FEE, TLE	0.150	0.002	0.000	0.002	0.148	0.022	0.000	8
9	4.05	Ralph R. Stophinski	FEE, TLE	0.150	0.001	0.000	0.001	0.149	0.025	0.000	9
10	4.05	Andrea M. Dankert	FEE, TLE	0.186	0.001	0.000	0.001	0.185	0.024	0.000	10
11	4.05	Joseph P. & Denise J. Ray	FEE, TLE	0.222	0.001	0.000	0.001	0.221	0.022	0.000	11
12	4.05	Jaclyn J. Meyer	FEE, TLE	0.186	0.002	0.000	0.002	0.184	0.030	0.000	12
13	4.05	Martin Rojas	FEE, TLE	0.244	0.001	0.000	0.001	0.243	0.012	0.000	13
14	4.06	Hyde Commercial LLC	FEE, TLE	0.224	0.002	0.000	0.002	0.222	0.018	0.000	14
15	4.06	Roth Family Limited Partnership	FEE, TLE	0.096	0.001	0.000	0.001	0.095	0.007	0.000	15
16	4.06	Jacob Kings	FEE, TLE	0.142	0.001	0.000	0.001	0.141	0.005	0.000	16
17	4.06	Robert A. & Nancy L. Andrews	FEE, TLE	0.148	0.001	0.000	0.001	0.147	0.007	0.000	17
18	4.06	James B & Sara A. Perry	TLE	0.120	0.000	0.000	0.000	0.120	0.002	0.000	18
19	4.06	Douglas D. Westphal, Paul L. & Dolores A. Westphal Rev. Trust	FEE, TLE	0.216	0.002	0.000	0.002	0.214	0.012	0.000	19
20	4.06	Heleen Quarino, Louis J. Quarino Jr.	FEE, TLE	0.217	0.002	0.000	0.002	0.215	0.012	0.000	20
21	4.06	Clara Perry	FEE, TLE	0.193	0.002	0.000	0.002	0.191	0.017	0.000	21
		Boyd R. Spangrud									

REVISION DATE: _____

DATE 08-15-2016

SCALE: FEET

0 100 200

HWY: NATIONAL AVENUE

COUNTY: MILWAUKEE

R/W PROJECT NUMBER 2410-00-06

CONSTRUCTION PROJECT NUMBER 2410-00-76

PLAT SHEET 4.02

PS&E SHEET E

FILE NAME : L:\ndp82015\20150822\CAD\17-08080701.dwg

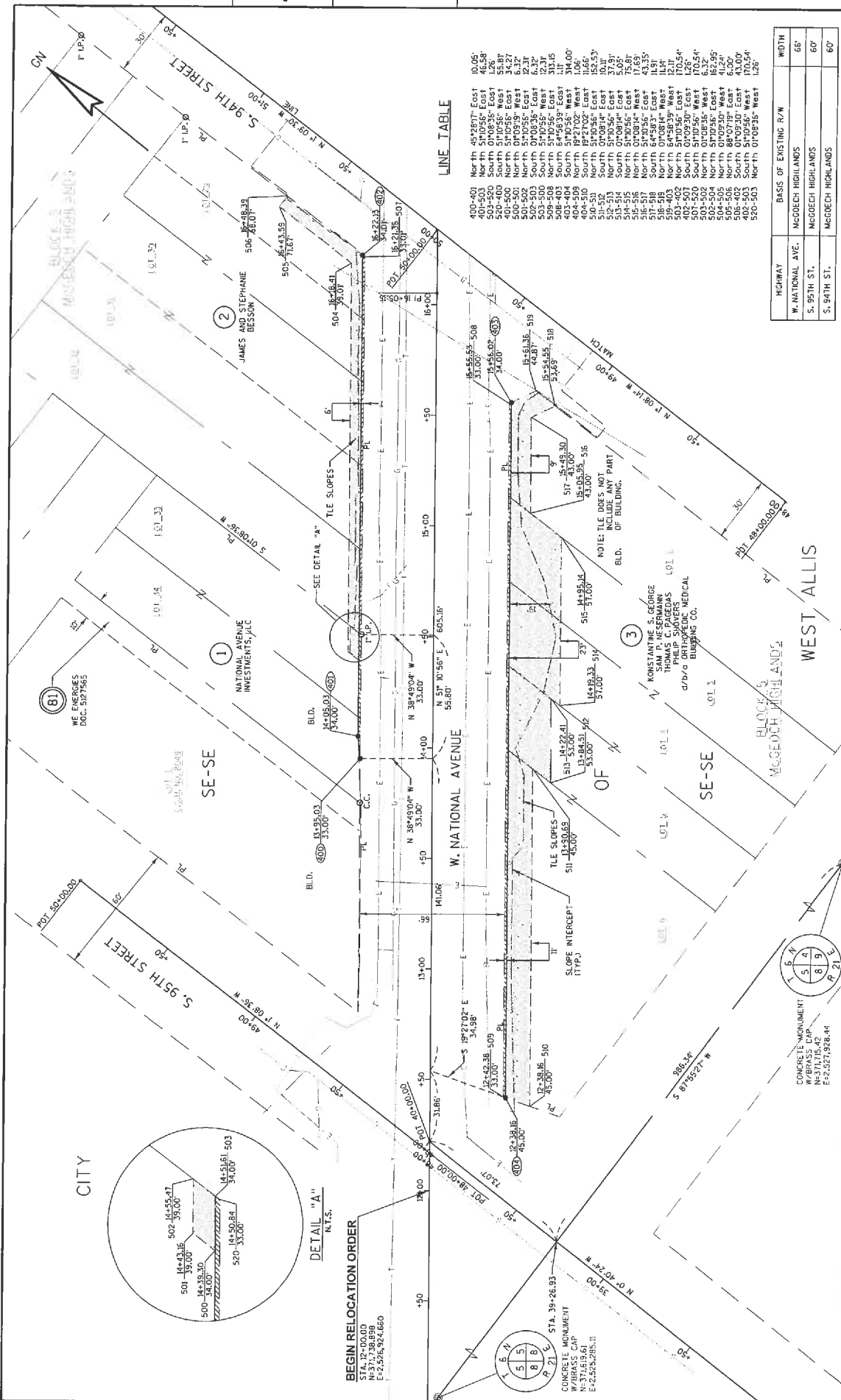
PLOT DATE : 9/27/2016

PLOT BY : GRAEF

PLOT NAME :

PLOT SCALE : 35.9998 87 / IN.

WSDOT/CADDIS SHEET 60



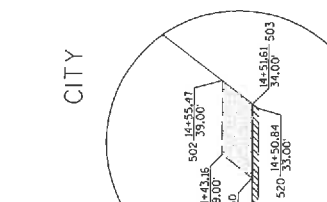
LINE TABLE

LINE NO.	DESCRIPTION	START STATION	END STATION	WIDTH
10.05	North 45°29'17" East	10.05	10.05	60'
400-401	North 51°05'55" East	10.05	10.05	60'
400-402	South 01°08'35" East	10.05	10.05	60'
400-403	North 51°05'55" East	10.05	10.05	60'
400-404	South 01°08'35" East	10.05	10.05	60'
400-405	North 51°05'55" East	10.05	10.05	60'
400-406	South 01°08'35" East	10.05	10.05	60'
400-407	North 51°05'55" East	10.05	10.05	60'
400-408	South 01°08'35" East	10.05	10.05	60'
400-409	North 51°05'55" East	10.05	10.05	60'
400-410	South 01°08'35" East	10.05	10.05	60'
400-411	North 51°05'55" East	10.05	10.05	60'
400-412	South 01°08'35" East	10.05	10.05	60'
400-413	North 51°05'55" East	10.05	10.05	60'
400-414	South 01°08'35" East	10.05	10.05	60'
400-415	North 51°05'55" East	10.05	10.05	60'
400-416	South 01°08'35" East	10.05	10.05	60'
400-417	North 51°05'55" East	10.05	10.05	60'
400-418	South 01°08'35" East	10.05	10.05	60'
400-419	North 51°05'55" East	10.05	10.05	60'
400-420	South 01°08'35" East	10.05	10.05	60'
400-421	North 51°05'55" East	10.05	10.05	60'
400-422	South 01°08'35" East	10.05	10.05	60'
400-423	North 51°05'55" East	10.05	10.05	60'
400-424	South 01°08'35" East	10.05	10.05	60'
400-425	North 51°05'55" East	10.05	10.05	60'
400-426	South 01°08'35" East	10.05	10.05	60'
400-427	North 51°05'55" East	10.05	10.05	60'
400-428	South 01°08'35" East	10.05	10.05	60'
400-429	North 51°05'55" East	10.05	10.05	60'
400-430	South 01°08'35" East	10.05	10.05	60'
400-431	North 51°05'55" East	10.05	10.05	60'
400-432	South 01°08'35" East	10.05	10.05	60'
400-433	North 51°05'55" East	10.05	10.05	60'
400-434	South 01°08'35" East	10.05	10.05	60'
400-435	North 51°05'55" East	10.05	10.05	60'
400-436	South 01°08'35" East	10.05	10.05	60'
400-437	North 51°05'55" East	10.05	10.05	60'
400-438	South 01°08'35" East	10.05	10.05	60'
400-439	North 51°05'55" East	10.05	10.05	60'
400-440	South 01°08'35" East	10.05	10.05	60'
400-441	North 51°05'55" East	10.05	10.05	60'
400-442	South 01°08'35" East	10.05	10.05	60'
400-443	North 51°05'55" East	10.05	10.05	60'
400-444	South 01°08'35" East	10.05	10.05	60'
400-445	North 51°05'55" East	10.05	10.05	60'
400-446	South 01°08'35" East	10.05	10.05	60'
400-447	North 51°05'55" East	10.05	10.05	60'
400-448	South 01°08'35" East	10.05	10.05	60'
400-449	North 51°05'55" East	10.05	10.05	60'
400-450	South 01°08'35" East	10.05	10.05	60'

HIGHWAY	BASIS OF EXISTING R/W	WIDTH
W. NATIONAL AVE.	MCGEECH HIGHLANDS	65'
S. 95TH ST.	MCGEECH HIGHLANDS	60'
S. 94TH ST.	MCGEECH HIGHLANDS	60'

REVISION DATE: _____
 DATE 08-15-2016
 GRID FACTOR: _____
 SCALE, FEET: 0 20 40
 HWY: NATIONAL AVENUE
 COUNTY: MILWAUKEE
 PROJECT NUMBER: 2410-00-06
 CONSTRUCTION PROJECT NUMBER: 2410-00-76
 R/W PROJECT NUMBER: 2410-00-06
 PLAT SHEET: 4.04
 PS&E SHEET: E

FILE NAME: L:\08082015\20150223\DATA\Twp\spc\101\con\spc\00\040110 - TP - 059
 PLOT SCALE: 40,000.00 / 1" = 4000.00'
 PLOT NAME: _____
 PLOT BY: GRAEF
 PLOT DATE: 9/27/2016
 WISDOT/CADDIS SHEET 75

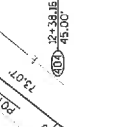


BEGIN RELOCATION ORDER
 STA. 12+00.00
 N=371,738.898
 E=21,526,324.660



DETAIL "A"
 N.T.S.
 500-1443.35
 500-1443.30
 500-1443.25
 500-1443.20
 500-1443.15
 500-1443.10
 500-1443.05
 500-1443.00
 500-1442.95
 500-1442.90
 500-1442.85
 500-1442.80
 500-1442.75
 500-1442.70
 500-1442.65
 500-1442.60
 500-1442.55
 500-1442.50
 500-1442.45
 500-1442.40
 500-1442.35
 500-1442.30
 500-1442.25
 500-1442.20
 500-1442.15
 500-1442.10
 500-1442.05
 500-1442.00
 500-1441.95
 500-1441.90
 500-1441.85
 500-1441.80
 500-1441.75
 500-1441.70
 500-1441.65
 500-1441.60
 500-1441.55
 500-1441.50
 500-1441.45
 500-1441.40
 500-1441.35
 500-1441.30
 500-1441.25
 500-1441.20
 500-1441.15
 500-1441.10
 500-1441.05
 500-1441.00
 500-1440.95
 500-1440.90
 500-1440.85
 500-1440.80
 500-1440.75
 500-1440.70
 500-1440.65
 500-1440.60
 500-1440.55
 500-1440.50
 500-1440.45
 500-1440.40
 500-1440.35
 500-1440.30
 500-1440.25
 500-1440.20
 500-1440.15
 500-1440.10
 500-1440.05
 500-1440.00

CONCRETE MONUMENT
 W/BRASS CAP
 N=371,693.61
 E=21,525,285.11



CONCRETE MONUMENT
 W/BRASS CAP
 N=371,693.61
 E=21,525,285.11



CONCRETE MONUMENT
 W/BRASS CAP
 N=371,693.61
 E=21,525,285.11



CONCRETE MONUMENT
 W/BRASS CAP
 N=371,693.61
 E=21,525,285.11

CONCRETE MONUMENT
 W/BRASS CAP
 N=371,693.61
 E=21,525,285.11

CONCRETE MONUMENT
 W/BRASS CAP
 N=371,693.61
 E=21,525,285.11

CONCRETE MONUMENT
 W/BRASS CAP
 N=371,693.61
 E=21,525,285.11

CONCRETE MONUMENT
 W/BRASS CAP
 N=371,693.61
 E=21,525,285.11

CONCRETE MONUMENT
 W/BRASS CAP
 N=371,693.61
 E=21,525,285.11

CONCRETE MONUMENT
 W/BRASS CAP
 N=371,693.61
 E=21,525,285.11

CONCRETE MONUMENT
 W/BRASS CAP
 N=371,693.61
 E=21,525,285.11

CONCRETE MONUMENT
 W/BRASS CAP
 N=371,693.61
 E=21,525,285.11

CONCRETE MONUMENT
 W/BRASS CAP
 N=371,693.61
 E=21,525,285.11

CONCRETE MONUMENT
 W/BRASS CAP
 N=371,693.61
 E=21,525,285.11

CONCRETE MONUMENT
 W/BRASS CAP
 N=371,693.61
 E=21,525,285.11

CONCRETE MONUMENT
 W/BRASS CAP
 N=371,693.61
 E=21,525,285.11

CONCRETE MONUMENT
 W/BRASS CAP
 N=371,693.61
 E=21,525,285.11

CONCRETE MONUMENT
 W/BRASS CAP
 N=371,693.61
 E=21,525,285.11

CONCRETE MONUMENT
 W/BRASS CAP
 N=371,693.61
 E=21,525,285.11

CONCRETE MONUMENT
 W/BRASS CAP
 N=371,693.61
 E=21,525,285.11

CONCRETE MONUMENT
 W/BRASS CAP
 N=371,693.61
 E=21,525,285.11

CONCRETE MONUMENT
 W/BRASS CAP
 N=371,693.61
 E=21,525,285.11

CONCRETE MONUMENT
 W/BRASS CAP
 N=371,693.61
 E=21,525,285.11

CONCRETE MONUMENT
 W/BRASS CAP
 N=371,693.61
 E=21,525,285.11

CONCRETE MONUMENT
 W/BRASS CAP
 N=371,693.61
 E=21,525,285.11

CONCRETE MONUMENT
 W/BRASS CAP
 N=371,693.61
 E=21,525,285.11

CONCRETE MONUMENT
 W/BRASS CAP
 N=371,693.61
 E=21,525,285.11

CONCRETE MONUMENT
 W/BRASS CAP
 N=371,693.61
 E=21,525,285.11

CONCRETE MONUMENT
 W/BRASS CAP
 N=371,693.61
 E=21,525,285.11

CONCRETE MONUMENT
 W/BRASS CAP
 N=371,693.61
 E=21,525,285.11

CONCRETE MONUMENT
 W/BRASS CAP
 N=371,693.61
 E=21,525,285.11

CONCRETE MONUMENT
 W/BRASS CAP
 N=371,693.61
 E=21,525,285.11

CONCRETE MONUMENT
 W/BRASS CAP
 N=371,693.61
 E=21,525,285.11

CONCRETE MONUMENT
 W/BRASS CAP
 N=371,693.61
 E=21,525,285.11

CONCRETE MONUMENT
 W/BRASS CAP
 N=371,693.61
 E=21,525,285.11

CONCRETE MONUMENT
 W/BRASS CAP
 N=371,693.61
 E=21,525,285.11

CONCRETE MONUMENT
 W/BRASS CAP
 N=371,693.61
 E=21,525,285.11

CONCRETE MONUMENT
 W/BRASS CAP
 N=371,693.61
 E=21,525,285.11

CONCRETE MONUMENT
 W/BRASS CAP
 N=371,693.61
 E=21,525,285.11

CONCRETE MONUMENT
 W/BRASS CAP
 N=371,693.61
 E=21,525,285.11

CONCRETE MONUMENT
 W/BRASS CAP
 N=371,693.61
 E=21,525,285.11

CONCRETE MONUMENT
 W/BRASS CAP
 N=371,693.61
 E=21,525,285.11

CONCRETE MONUMENT
 W/BRASS CAP
 N=371,693.61
 E=21,525,285.11

CONCRETE MONUMENT
 W/BRASS CAP
 N=371,693.61
 E=21,525,285.11

CONCRETE MONUMENT
 W/BRASS CAP
 N=371,693.61
 E=21,525,285.11

CONCRETE MONUMENT
 W/BRASS CAP
 N=371,693.61
 E=21,525,285.11

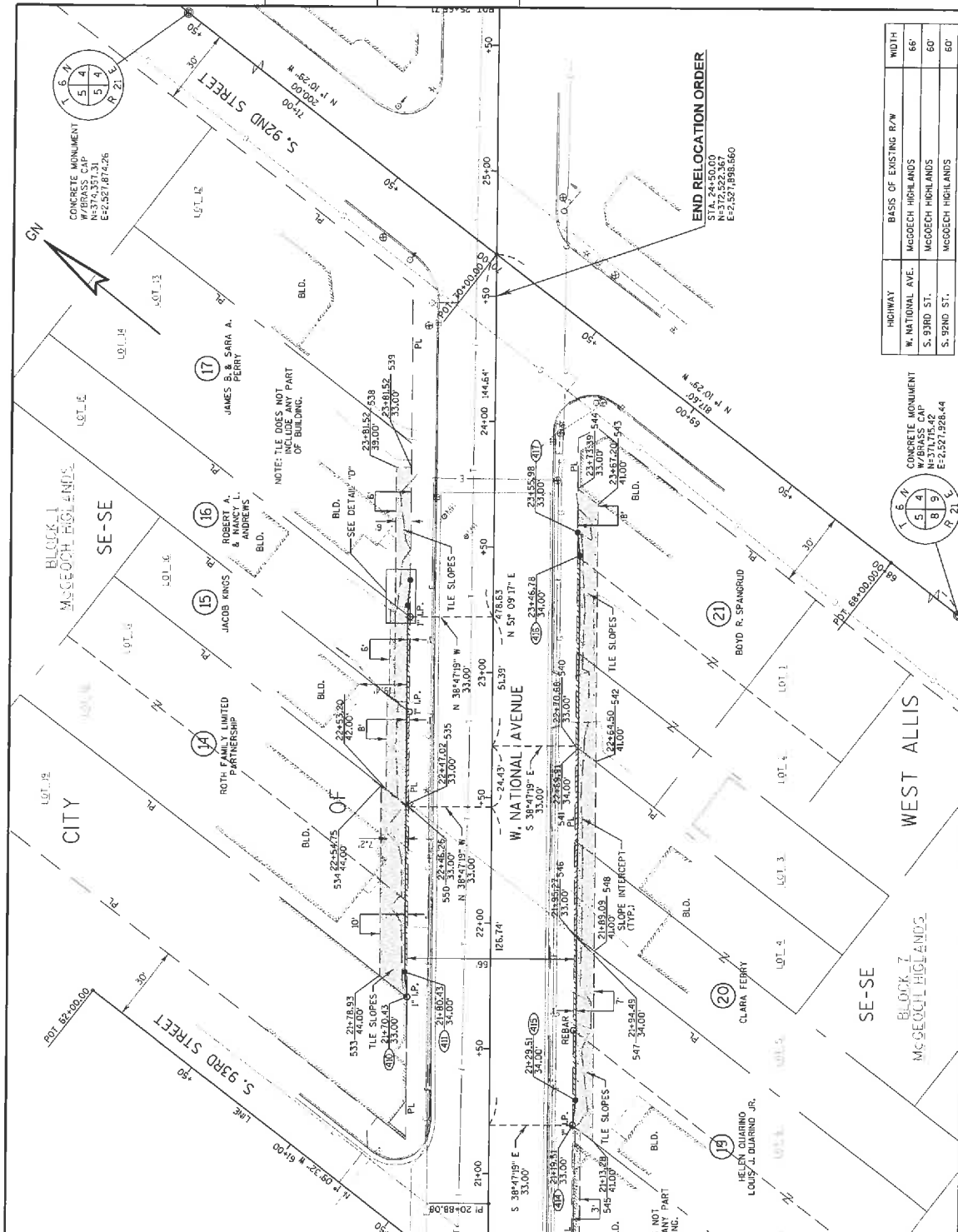
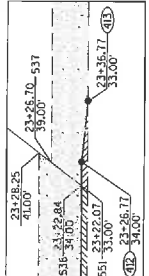
CONCRETE MONUMENT
 W/BRASS CAP
 N=371,693.61
 E=21,525,285.11

CONCRETE MONUMENT
 W/BRASS CAP
 N=371,693.61
 E=21,525,285.11

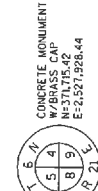
CONCRETE MONUMENT
 W/BRASS CAP
 N=371,693.61
 E=21,525,285.11

LINE TABLE

550-410	South 5709317 West	75.62'
400-410	North 5709177 East	66.59'
535-550	South 0709332 East	126'
410-535	North 0709332 West	16.59'
410-513	North 0709332 West	13.90'
532-534	South 0709177 East	75.82'
531-532	North 0709177 West	128.4'
551-536	North 0709332 West	3.93'
536-412	North 5709177 East	10.05'
413-551	South 5709355 East	6.32'
535-537	North 0709332 West	54.81'
537-538	North 5709177 East	44.75'
538-413	South 5709177 West	100.05'
413-412	South 565555 West	3.93'
412-536	South 5709177 West	126.76'
547-415	South 5709332 East	64.99'
415-547	North 5709332 West	100.05'
415-547	South 5709332 East	8.84'
547-548	South 0709033 East	75.81'
548-545	South 5709332 West	9.25'
540-417	North 5709177 East	85.30'
417-416	South 445703 West	9.25'
515-540	South 5709332 West	76.87'
416-540	North 445703 East	9.25'
417-544	North 5709177 East	17.41'
543-542	South 5709177 West	102.65'
542-541	North 0710229 West	8.84'



HIGHWAY	BASIS OF EXISTING R/W	WIDTH
W. NATIONAL AVE.	MCGOECH HIGHLANDS	66'
S. 93RD ST.	MCGOECH HIGHLANDS	60'
S. 92ND ST.	MCGOECH HIGHLANDS	60'



DATE 08-15-2016
GRID FACTOR
SCALE, FEET
0 20 40
HWY: NATIONAL AVENUE
COUNTY: MILWAUKEE
R/W PROJECT NUMBER 2410-00-06
CONSTRUCTION PROJECT NUMBER 2410-00-76
PLAT SHEET 4,06
PS&E SHEET E