





ARCHITECTURAL FENESTRATION TO ENHANCE RETAIL UNIFORMITY IN THE AREA

IMP EXCEEDS SUSTAINABLE LEED STANDARDS BY PROVIDING SUPERIOR R-VALUE INSULATION FOR GREATER THERMAL EFFICIENCY

ARTISTIC USE OF MATERIAL CREATES AN EXTRUDED LYRICAL ARTICULATED DESIGN ELEMENT

CHANGE IN MATERIAL AND COLORS TO PROVIDE VISUAL SEPARATION TO THE ELEVATION

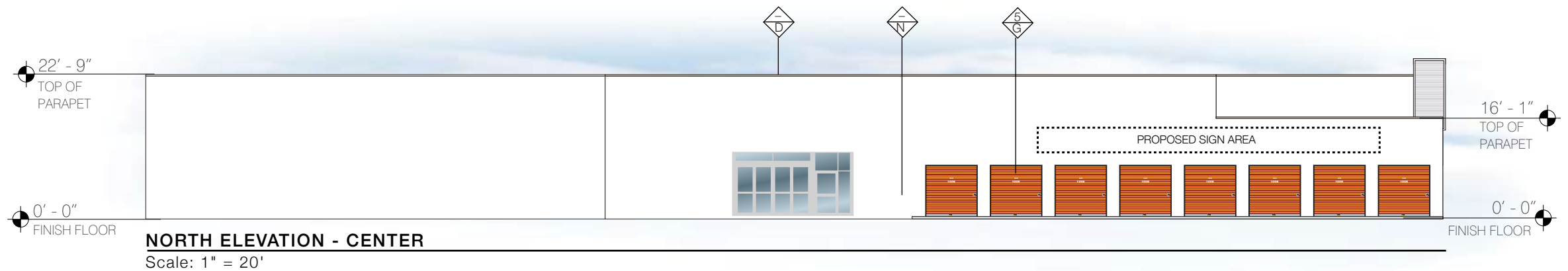
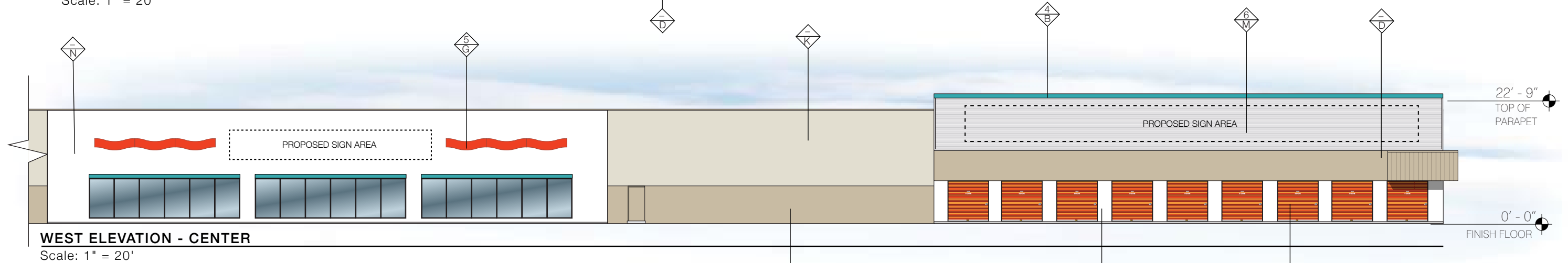
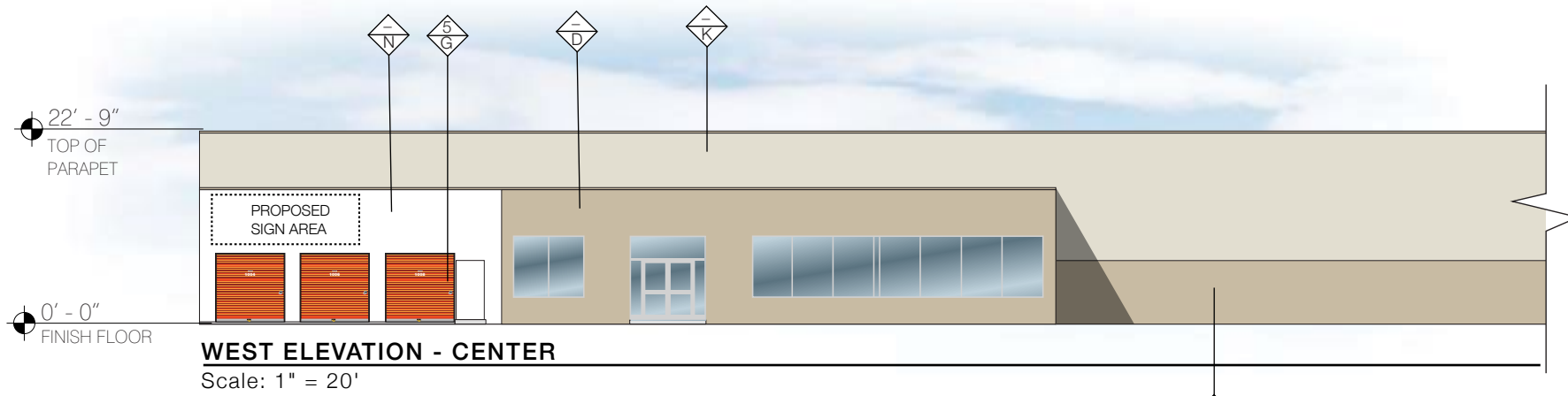


**A&M ASSOCIATES, INC.**  
2727 N. CENTRAL AVENUE  
PHOENIX, ARIZONA 85004  
P: 602.263.6841



**West Elevation**  
Composite Rendering

**SHEET 02**



**GENERAL NOTES:**  
 D1 - THE PROPOSED IMP USES FULL-WIDTH PANELS. DO NOT CUT PANELS DUE TO PAINT VARIATIONS. CONSULT WITH UHI CONSTRUCTION DEPT. OR A&M ASSOCIATES BEFORE CUTTING IMP.  
 D2 - THE PROPOSED PROJECT CONSISTS OF 42" WIDE IMP. DEVIATING FROM THIS SIZE PANEL WILL ALTER THE LYRICAL FIN DESIGN. PLEASE CONSULT WITH UHI CONSTRUCTION DEPT. OR A&M ASSOCIATES BEFORE CHANGING THE PLACEMENT AND WIDTH OF THIS PANEL.

COLOR BOARD			
A	FOREST GREEN	H	SW 6451 NURTURE GREEN
B	SW 6767 AQUARIUM	I	GALVALUME
C	U-HAUL PROMO GREEN	J	DARK OAK
D	SW 6182 RELAXED KHAKI	K	SW 7011 NATURAL CHOICE
E	SW 6884 OBSTINATE ORANGE	L	SW EGG SHELL BLACK
F	REGAL WHITE III	M	CLEAR SATIN ANODIZED
G	SIERRA SUNSET	N	ULTRA HIGH GLOSS WHITE

MATERIAL BOARD	
1	42"W STUCCO EMBOSSED VERTICAL IMP
2	9"D LYRICAL ARTICULATED DESIGN ELEMENT
3	9"H x 3"D ARCHITECTURAL DETAILS
4	12"H ROOF TRIMS TYP.
5	ARCHITECTURAL DETAILS
6	RIDGID WALL II HORIZONTAL PANELS
7	HORIZONTAL FAUX WOOD PANELS
8	2"W TRIM ON SIDES OF DARK OAK PANELS

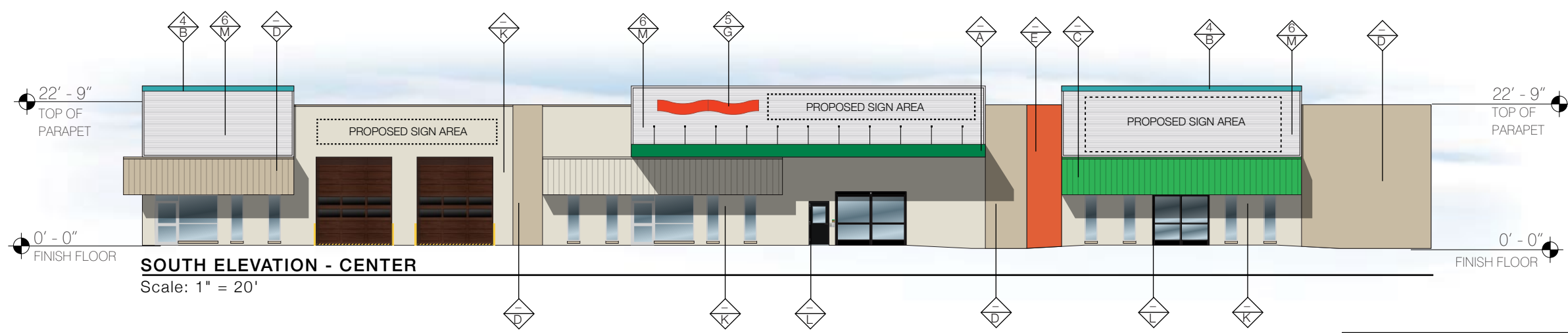
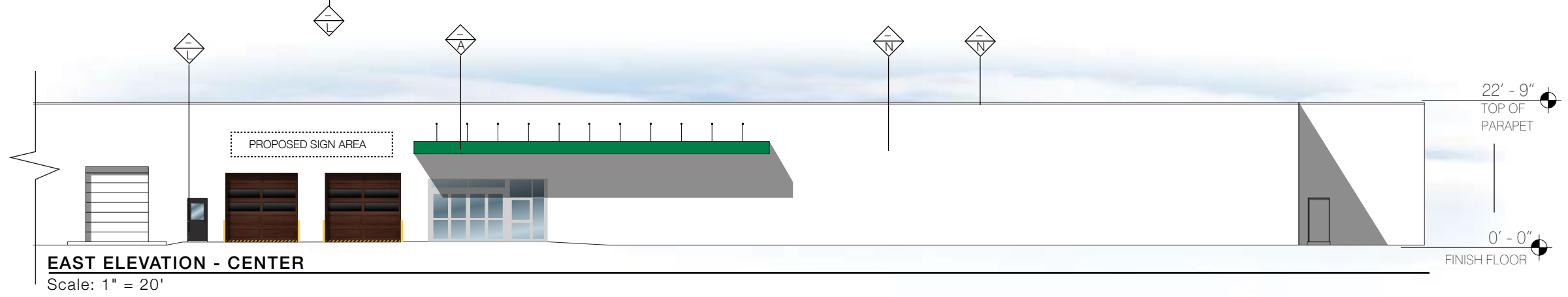


**A&M ASSOCIATES, INC.**  
 2727 N. CENTRAL AVENUE  
 PHOENIX, ARIZONA 85004  
 P: 602.263.6841



**Color & Material Board**

**SHEET 03**



**GENERAL NOTES:**  
 D1 - THE PROPOSED IMP USES FULL-WIDTH PANELS. DO NOT CUT PANELS DUE TO PAINT VARIATIONS. CONSULT WITH UHI CONSTRUCTION DEPT. OR A&M ASSOCIATES BEFORE CUTTING IMP.  
 D2 - THE PROPOSED PROJECT CONSISTS OF 42" WIDE IMP. DEVIATING FROM THIS SIZE PANEL WILL ALTER THE LYRICAL FIN DESIGN. PLEASE CONSULT WITH UHI CONSTRUCTION DEPT. OR A&M ASSOCIATES BEFORE CHANGING THE PLACEMENT AND WIDTH OF THIS PANEL.

COLOR BOARD			
A	FOREST GREEN	H	SW 6451 NURTURE GREEN
B	SW 6767 AQUARIUM	I	GALVALUME
C	U-HAUL PROMO GREEN	J	DARK OAK
D	SW 6182 RELAXED KHAKI	K	SW 7011 NATURAL CHOICE
E	SW 6884 OBSTINATE ORANGE	L	SW EGGSHELL BLACK
F	REGAL WHITE III	M	CLEAR SATIN ANODIZED
G	SIERRA SUNSET	N	ULTRA HIGH GLOSS WHITE

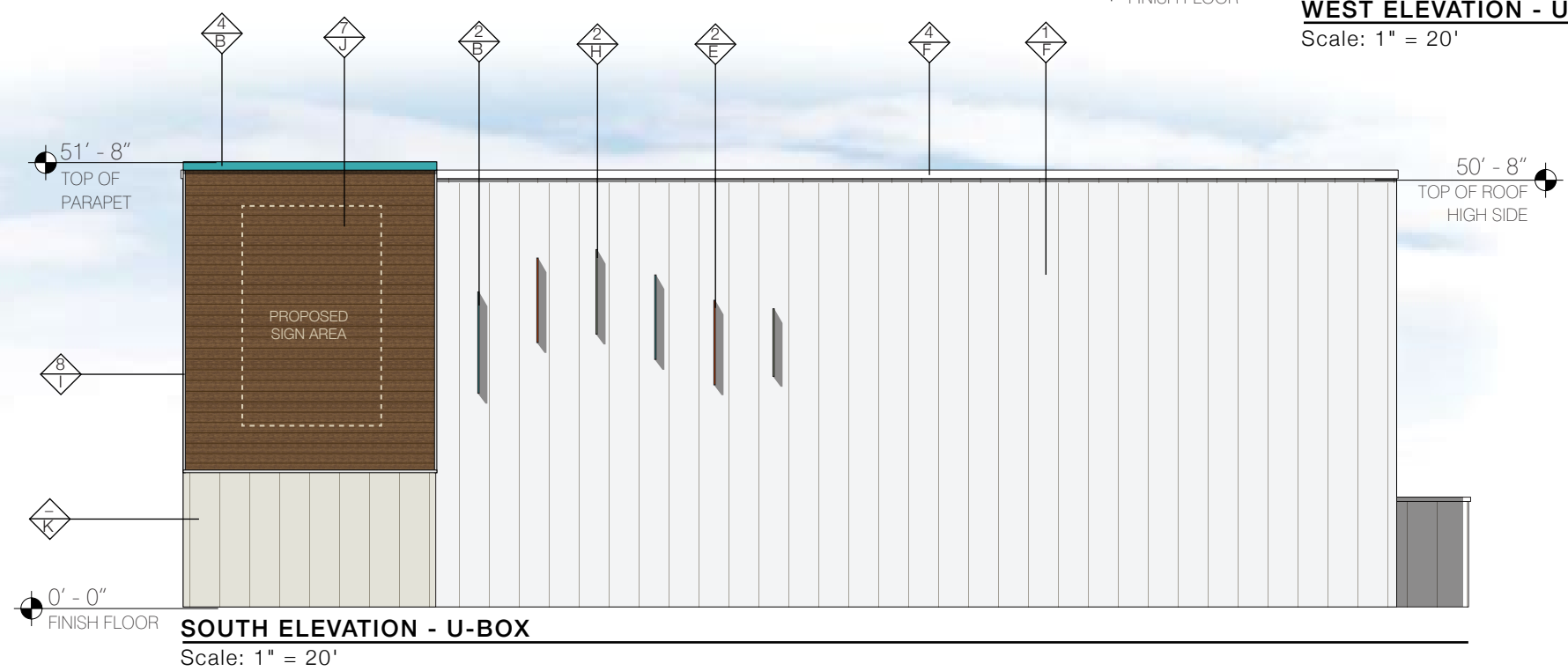
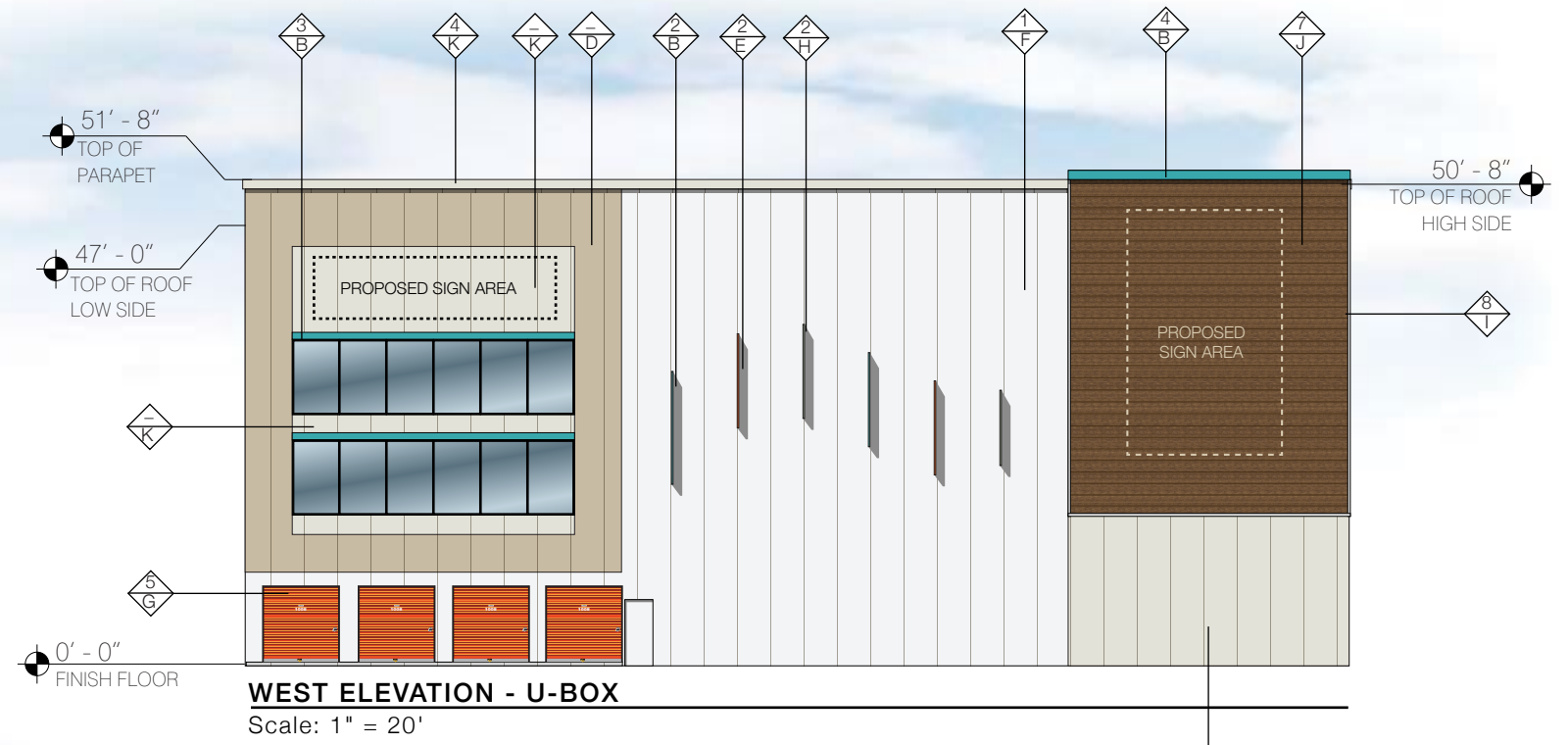
MATERIAL BOARD	
1	42"W STUCCO EMBOSSED VERTICAL IMP
2	9"D LYRICAL ARTICULATED DESIGN ELEMENT
3	9"H x 3"D ARCHITECTURAL DETAILS
4	12"H ROOF TRIMS TYP.
5	ARCHITECTURAL DETAILS
6	RIDGID WALL II HORIZONTAL PANELS
7	HORIZONTAL FAUX WOOD PANELS
8	2"W TRIM ON SIDES OF DARK OAK PANELS

**a&m**  
**A&M ASSOCIATES, INC.**  
 2727 N. CENTRAL AVENUE  
 PHOENIX, ARIZONA 85004  
 P: 602.263.6841



Color & Material Board

**SHEET 04**



**GENERAL NOTES:**  
 D1 - THE PROPOSED IMP USES FULL-WIDTH PANELS. DO NOT CUT PANELS DUE TO PAINT VARIATIONS. CONSULT WITH UHI CONSTRUCTION DEPT. OR A&M ASSOCIATES BEFORE CUTTING IMP.  
 D2 - THE PROPOSED PROJECT CONSISTS OF 42" WIDE IMP. DEVIATING FROM THIS SIZE PANEL WILL ALTER THE LYRICAL FIN DESIGN. PLEASE CONSULT WITH UHI CONSTRUCTION DEPT. OR A&M ASSOCIATES BEFORE CHANGING THE PLACEMENT AND WIDTH OF THIS PANEL.

COLOR BOARD			
A	FOREST GREEN	H	SW 6451 NURTURE GREEN
B	SW 6767 AQUARIUM	I	GALVALUME
C	U-HAUL PROMO GREEN	J	DARK OAK
D	SW 6182 RELAXED KHAKI	K	SW 7011 NATURAL CHOICE
E	SW 6884 OBSTINATE ORANGE	L	SW EGGSHELL BLACK
F	REGAL WHITE III	M	CLEAR SATIN ANODIZED
G	SIERRA SUNSET	N	ULTRA HIGH GLOSS WHITE

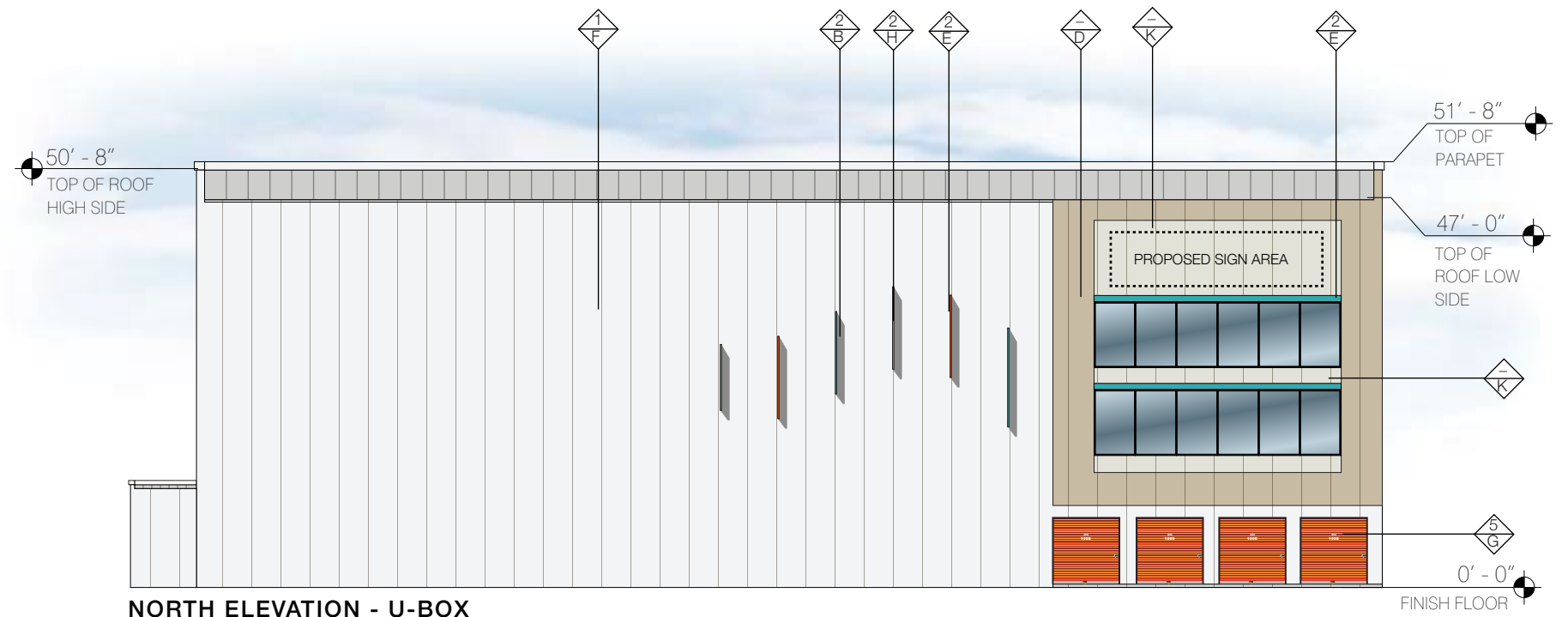
MATERIAL BOARD	
1	42"W STUCCO EMBOSSED VERTICAL IMP
2	9"D LYRICAL ARTICULATED DESIGN ELEMENT
3	9"H x 3"D ARCHITECTURAL DETAILS
4	12"H ROOF TRIMS TYP.
5	ARCHITECTURAL DETAILS
6	RIDGID WALL II HORIZONTAL PANELS
7	HORIZONTAL FAUX WOOD PANELS
8	2"W TRIM ON SIDES OF DARK OAK PANELS

**a&m**  
**A&M ASSOCIATES, INC.**  
 2727 N. CENTRAL AVENUE  
 PHOENIX, ARIZONA 85004  
 P: 602.263.6841

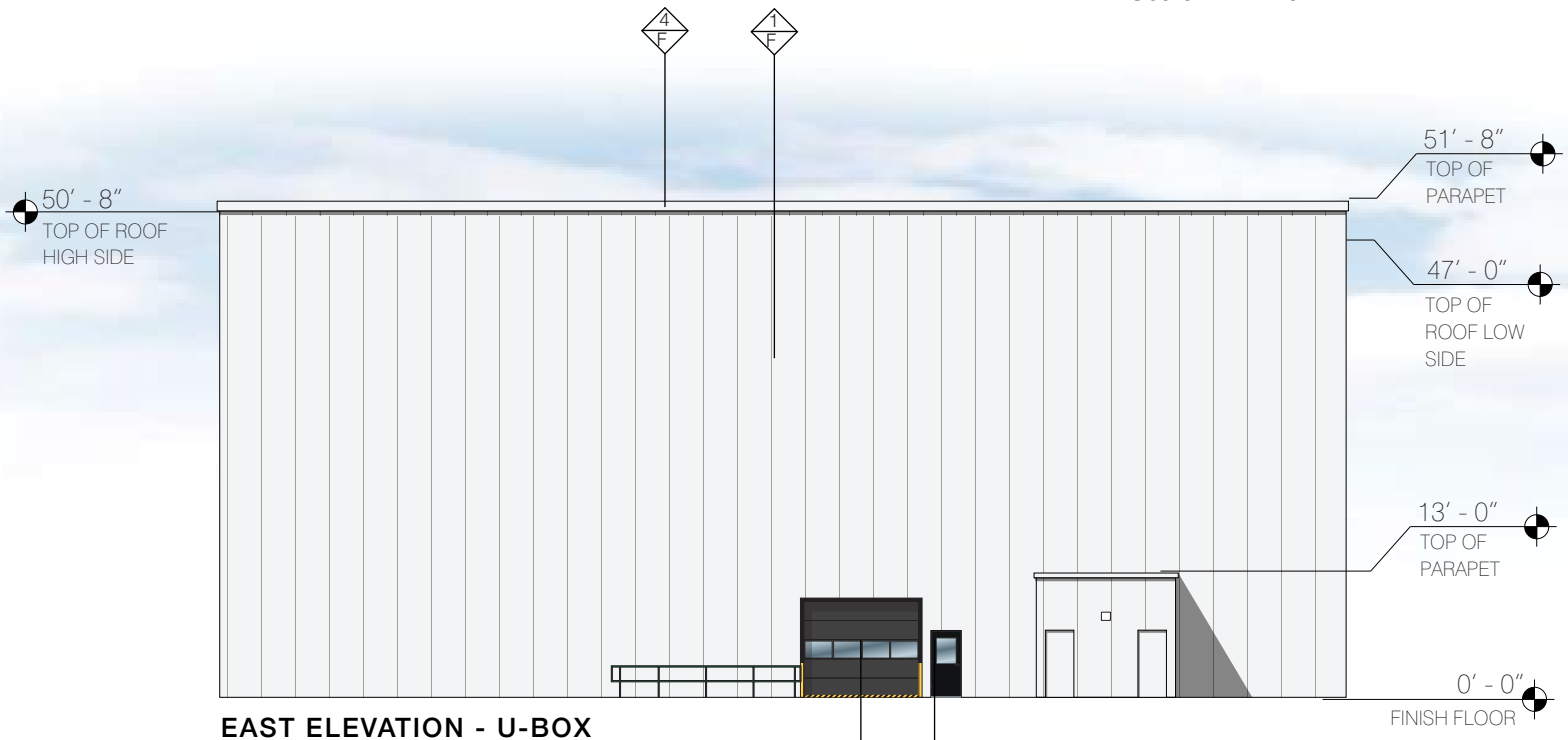
**U-HAUL**  
 of West Allis  
 West Allis, WI  
 (750080)

Color & Material Board

**SHEET 05**



**NORTH ELEVATION - U-BOX**  
Scale: 1" = 20'



**EAST ELEVATION - U-BOX**  
Scale: 1" = 20'

**GENERAL NOTES:**  
 D1 - THE PROPOSED IMP USES FULL-WIDTH PANELS. DO NOT CUT PANELS DUE TO PAINT VARIATIONS. CONSULT WITH UHI CONSTRUCTION DEPT. OR A&M ASSOCIATES BEFORE CUTTING IMP.  
 D2 - THE PROPOSED PROJECT CONSISTS OF 42" WIDE IMP. DEVIATING FROM THIS SIZE PANEL WILL ALTER THE LYRICAL FIN DESIGN. PLEASE CONSULT WITH UHI CONSTRUCTION DEPT. OR A&M ASSOCIATES BEFORE CHANGING THE PLACEMENT AND WIDTH OF THIS PANEL.

COLOR BOARD			
A	FOREST GREEN	H	SW 6451 NURTURE GREEN
B	SW 6767 AQUARIUM	I	GALVALUME
C	U-HAUL PROMO GREEN	J	DARK OAK
D	SW 6182 RELAXED KHAKI	K	SW 7011 NATURAL CHOICE
E	SW 6884 OBSTINATE ORANGE	L	SW EGGSHHELL BLACK
F	REGAL WHITE III	M	CLEAR SATIN ANODIZED
G	SIERRA SUNSET	N	ULTRA HIGH GLOSS WHITE

MATERIAL BOARD	
1	42"W STUCCO EMBOSSED VERTICAL IMP
2	9"D LYRICAL ARTICULATED DESIGN ELEMENT
3	9"H x 3"D ARCHITECTURAL DETAILS
4	12"H ROOF TRIMS TYP.
5	ARCHITECTURAL DETAILS
6	RIDGID WALL II HORIZONTAL PANELS
7	HORIZONTAL FAUX WOOD PANELS
8	2"W TRIM ON SIDES OF DARK OAK PANELS

**a&m**  
**A&M ASSOCIATES, INC.**  
 2727 N. CENTRAL AVENUE  
 PHOENIX, ARIZONA 85004  
 P: 602.263.6841

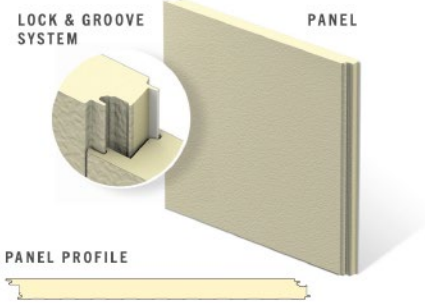


Color & Material Board

**SHEET 06**

# METL-SPAN CF Santa Fe IMP (or Equivalent IMP)

The Metl-Span CF Santa Fe panel has a flat exterior profile with a heavy, embossed stucco texture that mimics the look of a masonry stucco finish but with the added value of an insulated metal panel. The profile is flush with the warmth of an old-world finish, providing a visually pleasing building.



## PRODUCT SPECIFICATIONS

**WIDTH** • 24", 30", 36", 42"

**THICKNESS** • 2", 2½", 2¾", 3", 4"

**LENGTH** 8'-0" to 32'-0" Horizontal  
8'-0" to 40'-0" Vertical

**EXTERIOR PROFILE** • Flat profile with heavy embossing resembling desert southwestern appearance

**EXTERIOR FACE** • G-90 galvanized or AZ-50 aluminum-zinc coated steel in 24 and 22 Ga.

**INTERIOR PROFILE** • Light Mesa, nominal ¼" deep, embossed or unembossed

**INTERIOR FACE** • G-90 galvanized or AZ-50 aluminum-zinc coated in 26, 24 and 22 Ga.

**CORE** • Foamed-in-place, PUR Foam Core, zero ozone depleting (zero ODP) Class 1 foam

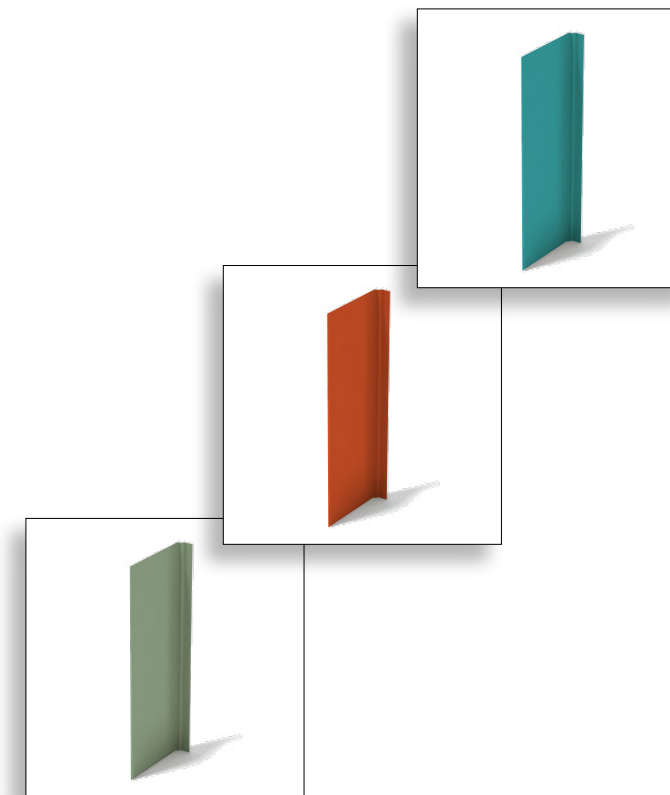
**JOINT** • Offset double tongue-and-groove with extended metal shelf for positive face fastening

**REVEAL** • Up to 1" reveal options in ¼", ½", ¾" and 1" increments

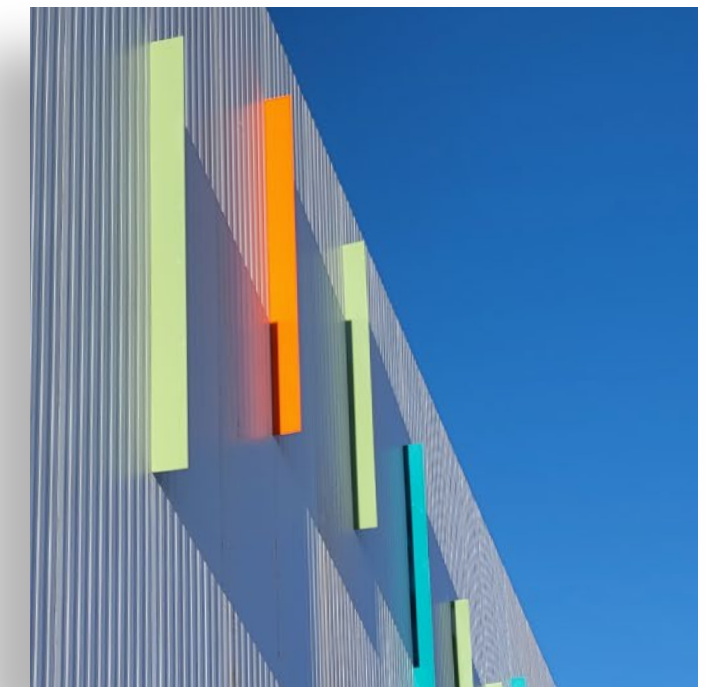
### U-FACTORS AND R-VALUES\*\*

U-FACTOR (BTU/h-ft <sup>2</sup> -°F)		R-VALUE (h-ft <sup>2</sup> -°F/BTU)	
PANEL WIDTH: 42"		PANEL WIDTH: 42"	
	35"		35"
2"	0.059	2"	17.5
2.5"	0.046	2.5"	21.9
3"	0.038	3"	26.2
4"	0.028	4"	35.0

\*Available only from Nevada plant  
\*\*Based on ASTM C518, ASTM C1363 and thermal modeling



# 9"D Lyrical Articulated Design Element

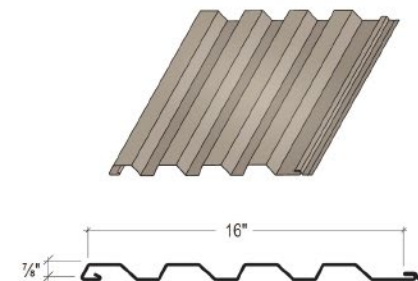


Dark Oak Horizontal Panels  
EXAMPLE



Stucco Embossed IMP  
EXAMPLE

## MASTERLINE 16



MasterLine 16 is a concealed-fastened metal wall panel that provides an interesting shadow line, enhancing the aesthetics of the panel. While primarily designed for horizontal applications, it can also be installed vertically to give a distinguished architectural design. The panels provide 16-inch coverage and are available with factory-applied mastic in the side laps. Panels may be attached to metal studs, with or without sheathing, as well as to subgirts.

### Product Specifications

- **Application:** Wall
- **Coverage Width:** 16"
- **Panel Attachment:** Concealed Fastening System
- **Gauges:** 24 (standard); 22, 20, 18 (optional)
- **Finishes:** Smooth (standard); Embossed (optional; 24 and 22 gauge only)
- **Coatings:** Galvalume Plus®, Signature® 200, Signature® 300, Signature® 300 Metallic



2727 N. CENTRAL AVENUE  
PHOENIX, ARIZONA 85004  
P: 602.263.6841



of West Allis  
West Allis, WI  
(750080)

Color & Materials

SHEET 07