

**STATE OF WISCONSIN**  
**DEPARTMENT OF TRANSPORTATION**  
**PLAN OF PROPOSED IMPROVEMENT**  
**W. NATIONAL AVENUE**  
**S. 62ND STREET TO S. 65TH STREET**  
**LOCAL ROAD**  
**MILWAUKEE COUNTY**

STATE PROJECT NUMBER  
**2410-13-70**

R/W PROJECT NUMBER 2410-13-00	SHEET NUMBER 4.01	TOTAL SHEETS 6
FEDERAL PROJECT NUMBER		
PLAT OF RIGHT OF WAY REQUIRED FOR <b>W. NATIONAL AVENUE</b> S. 62ND STREET TO S. 65TH STREET		
W. NATIONAL AVENUE		MILWAUKEE CO.
CONSTRUCTION PROJECT NUMBER 2410-13-70		

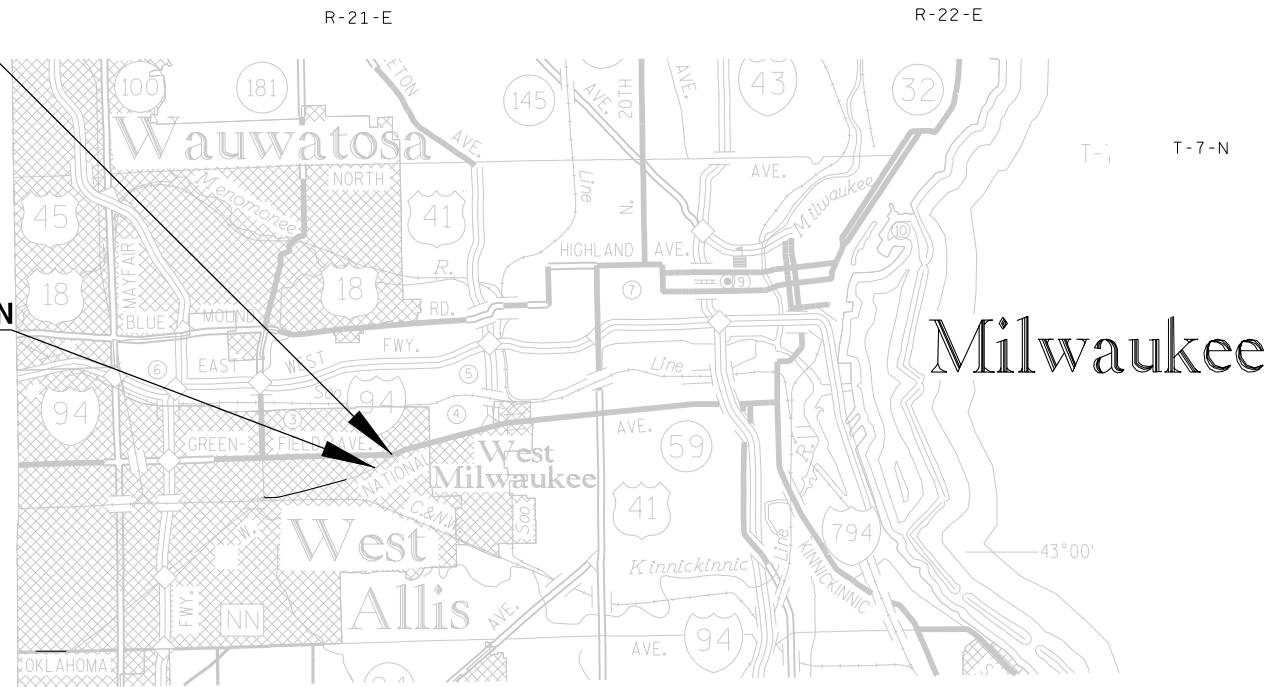
CAUTION  
 THIS PLAT IS FOR ILLUSTRATIVE PURPOSES ONLY.  
 DEEDS MUST BE CHECKED TO DETERMINE  
 PROPERTY BOUNDARIES.

**CURVE DATA**

LONG CHORD	LCH
LONG CHORD BEARING	LCB
RADIUS	R
DEGREE OF CURVE	D
CENTRAL ANGLE	Δ/DELTA
LENGTH OF CURVE	L
TANGENT	T
DIRECTION AHEAD	DA
DIRECTION BACK	DB

**CONVENTIONAL UTILITY SYMBOLS**

WATER	—W—
GAS	—G—
TELEPHONE OVERHEAD	—T—
TRANSMISSION LINES	—OH—
ELECTRIC	—E—
CABLE TELEVISION	—TV—
FIBER OPTIC	—FO—
SANITARY SEWER	—SAN—
STORM SEWER	—SS—



**CONVENTIONAL SYMBOLS**

SECTION LINE	---	SECTION CORNER SYMBOL		R/W MONUMENT (TO BE SET)	●
QUARTER LINE	---	SECTION CORNER MONUMENT		NON-MONUMENTED R/W POINT	○
SIXTEENTH LINE	---	GEODETIC SURVEY MONUMENT		FOUND IRON PIN (1-INCH UNLESS NOTED)	IP
NEW REFERENCE LINE	---	SIXTEENTH CORNER MONUMENT		OFF-PREMISE SIGN	
NEW R/W LINE	---	SIGN		NON-COMPENSABLE	
EXISTING R/W OR HE LINE	---	ELECTRIC POLE		COMPENSABLE	
PROPERTY LINE	---	TELEPHONE POLE		NON-COMPENSABLE	
LOT, TIE & OTHER MINOR LINES	---	PEDESTAL (LABEL TYPE) (TV, TEL, ELEC, ETC.)		ACCESS RESTRICTED BY ACQUISITION	
SLOPE INTERCEPT	---	NO ACCESS (BY STATUTORY AUTHORITY)		NO ACCESS (BY PREVIOUS PROJECT OR CONTROL)	
CORPORATE LIMITS	---	NO ACCESS (NEW HIGHWAY)		PARCEL NUMBER (25)	UTILITY NUMBER (40)
UNDERGROUND FACILITY (COMMUNICATIONS, ELECTRIC, ETC)	---	PARALLEL OFFSETS			
NEW R/W (FEE OR HE) (HATCHING VARIES BY OWNER)	---				
TEMPORARY LIMITED EASEMENT AREA	---				
EASEMENT AREA (PERMANENT LIMITED OR RESTRICTED DEVELOPMENT)	---				
TRANSMISSION STRUCTURES	---				
BUILDING TO BE REMOVED	---				
BRIDGE	---				

**CONVENTIONAL ABBREVIATIONS**

ACCESS RIGHTS	AR	POINT OF BEGINNING	POB
ACRES	AC	POINT OF CURVATURE	PC
AHEAD	AH	POINT OF COMPOUND CURVE	PCC
ALUMINUM	ALUM	POINT OF INTERSECTION	PI
AND OTHERS	ET AL	POINT OF TANGENCY	PT
BACK	BK	PROPERTY LINE	PL
BLOCK	BLK	RECORDED AS (100')	R/1
CENTERLINE	C	REEL / IMAGE	R
CERTIFIED SURVEY MAP	CSM	REFERENCE LINE	REM
CONCRETE	CONC	REMAINING	RDE
COUNTY	CO	RESTRICTIVE DEVELOPMENT EASEMENT	RT
COUNTY TRUNK HIGHWAY	CTH	RIGHT	R/W
DISTANCE	DIST	RIGHT OF WAY	SEC
CORNER	COR	SECTION	SEPV
DOCUMENT NUMBER	DOC	SEPTIC VENT	SF
EASEMENT	EASE	SQUARE FEET	STH
EXISTING	EX	STATE TRUNK HIGHWAY	STA
GAS VALVE	GV	STATION	TP
GRID NORTH	GN	TELEPHONE PEDESTAL	TLE
HIGHWAY EASEMENT	HE	TEMPORARY LIMITED EASEMENT	TPP
IDENTIFICATION	ID	PLAT	USH
LAND CONTRACT	LC	UNITED STATES HIGHWAY	V
LEFT	LT	VOLUME	Y,X
MONUMENT	MON	GRID COORDINATES	N,E
NATIONAL GEODETIC SURVEY	NGS	GROUND COORDINATES	
NUMBER	NO		
OUTLOT	OL		
PAGE	P		
PERMANENT LIMITED EASEMENT	PLE		

**END RELOCATION ORDER**  
 STA. 14+72.93  
 55' SOUTH OF AND  
 740' WEST OF THE  
 NE.1/4, SECTION 3,  
 T.6N., R.21E.  
 N= 377,038.14  
 E=2,537,705.09

**BEGIN RELOCATION ORDER**  
 STA. 5+61.01  
 459' SOUTH OF AND  
 AND 1,153' EAST OF  
 THE NW CORNER OF  
 THE NE.1/4, SECTION  
 3, T.6N., R.21E.  
 N= 376,546.47  
 E=2,536,937.07

**NOTES:**

COORDINATES SHOWN ON THIS PLAT ARE ORIENTED TO THE WISCONSIN STATE PLANE COORDINATE SYSTEM, SOUTH ZONE, NAD27. ALL PLAT DISTANCES ARE GROUND LENGTH AND MAY BE CONVERTED TO GRID LENGTH BY MULTIPLYING THE DISTANCE BY THE GRID FACTOR PROVIDED ON THE DETAIL SHEETS.

ALL NEW RIGHT OF WAY MONUMENTS WILL BE TYPE 2 MONUMENTS AND WILL BE PLACED PRIOR TO THE COMPLETION OF THE PROJECT. NEW RIGHT OF WAY MONUMENTATION THAT FALLS ON CONCRETE SURFACES WILL BE MONUMENTED BY A CHISELED CROSS ON 5' OFFSETS.

RIGHT OF WAY BOUNDARIES ARE DEFINED WITH COURSES OF THE PERIMETER OF THE HIGHWAY LANDS REFERENCED TO THE U.S. PUBLIC LAND SURVEY OR OTHER SURVEYS OF PUBLIC RECORD.

A TEMPORARY LIMITED EASEMENT (TLE) IS A RIGHT FOR CONSTRUCTION PURPOSES, AS DEFINED HEREIN, INCLUDING THE RIGHT TO OPERATE THE NECESSARY EQUIPMENT THEREON AND THE RIGHT OF INGRESS AND EGRESS, AS LONG AS REQUIRED FOR SUCH PUBLIC PURPOSE, INCLUDING THE RIGHT TO PRESERVE, PROTECT, REMOVE, OR PLANT THEREON ANY VEGETATION THAT HIGHWAY AUTHORITIES DEEM NECESSARY OR DESIRABLE. ALL TLE'S EXPIRE AT THE COMPLETION OF THE CONSTRUCTION PROJECT FOR WHICH THIS INSTRUMENT IS GIVEN.

PROPERTY LINES SHOWN ON THIS PLAT ARE DRAWN FOR DATA DERIVED FROM MAPS AND DOCUMENTS OF PUBLIC RECORD AND/OR EXISTING OCCUPATIONAL LINES. THIS PLAT MAY NOT BE A TRUE REPRESENTATION OF EXISTING PROPERTY LINES, EXCLUDING RIGHT-OF-WAY LINES, AND SHOULD NOT BE USED AS A SUBSTITUTE FOR AN ACCURATE FIELD SURVEY.

TOTAL NET LENGTH OF CENTERLINE = 0.173 MI.

REVISION DATE	CITY OF WEST ALLIS
APPROVED FOR THE CITY	DATE: 3/29/2021 <i>Jean Bender</i> (Signature)

ORIGINAL PLAT PREPARED BY

**GRaEF**

★ WISCONSIN ★

CARLA J. ROLLINS  
 S-3207  
 SHEBOYGAN, WI

LAND SURVEYOR

1/29/2021 *Carla J. Rollins* (Date) (Signature)

# SCHEDULE OF LANDS & INTERESTS REQUIRED

OWNER'S NAMES ARE SHOWN FOR REFERENCE  
PURPOSED ONLY AND ARE SUBJECT TO CHANGE  
PRIOR TO THE TRANSFER OF LAND INTERESTS  
TO THE DEPARTMENT.

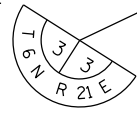
4

4

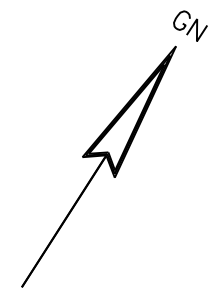
PARCEL NUMBER	SHEET NUMBER	OWNER	INTEREST REQUIRED	TOTAL ACRES	NEW	EXISTING	TOTAL	REMAINING ACRES	TEMP. ACRES	PERM. ACRES	PARCEL NUMBER
1	4.04	National Avenue North, LLC	TLE	0.172	0.000	0.000	0.000	0.172	0.010	0.000	1
2	4.04	National Avenue North, LLC	TLE	0.084	0.000	0.000	0.000	0.084	0.002	0.000	2
3	4.04	Midwest Commercial Funding, LLC	TLE	0.072	0.000	0.000	0.000	0.072	0.004	0.000	3
4	4.04	Nicholas J. Linz and Carrie L. Linz, husband and wife	TLE	0.110	0.000	0.000	0.000	0.110	0.004	0.000	4
5	4.04	Enhanced Properties II LLC	TLE	0.098	0.000	0.000	0.000	0.098	0.006	0.000	5
6	4.04	Juan J. Sendejo, Jr	TLE	0.164	0.000	0.000	0.000	0.164	0.011	0.000	6
7	4.04	INTENTIONALLY OMITTED	TLE	0.089	0.000	0.000	0.000	0.089	0.000	0.000	7
8	4.04	National Avenue South, LLC	TLE	0.080	0.000	0.000	0.000	0.080	0.006	0.000	8
9	4.04	National Avenue South, LLC	TLE	0.092	0.000	0.000	0.000	0.092	0.006	0.000	9
10	4.04	National Avenue South, LLC	TLE	0.103	0.000	0.000	0.000	0.103	0.006	0.000	10
11	4.04	National Avenue South, LLC	TLE	0.229	0.000	0.000	0.000	0.229	0.017	0.000	11
12	4.05	Brandon Viliunas	TLE	0.080	0.000	0.000	0.000	0.080	0.008	0.000	12
13	4.05	Jorge Avila, a single individual	TLE	0.080	0.000	0.000	0.000	0.080	0.006	0.000	13
14	4.05	Lacy Properties LLC	TLE	0.080	0.000	0.000	0.000	0.080	0.006	0.000	14
15	4.05	Brandon W. Masch, a single person	TLE	0.074	0.000	0.000	0.000	0.074	0.006	0.000	15
16	4.05	WFFI, LLC, a Wisconsin limited liability company	TLE	0.517	0.000	0.000	0.000	0.517	0.022	0.000	16
17	4.05	Motor Castings Company, a Wisconsin corporation	TLE	0.442	0.000	0.000	0.000	0.442	0.047	0.000	17
18	4.05	Z's Bar LLC	TLE	0.117	0.000	0.000	0.000	0.117	0.003	0.000	18
19	4.05	J & S 2008 LLC	TLE	0.138	0.000	0.000	0.000	0.138	0.001	0.000	19
20	4.06	Epikos, a Wisconsin religious organization	TLE	0.443	0.000	0.000	0.000	0.443	0.020	0.000	20
21	4.06	Daniel McGuire	TLE	0.099	0.000	0.000	0.000	0.099	0.003	0.000	21
22	4.06	BB5 Properties LLC, a Wisconsin limited liability company	TLE	0.121	0.000	0.000	0.000	0.121	0.004	0.000	22
23	4.06	City of West Allis, a Wisconsin municipal body corporate	TLE	0.243	0.000	0.000	0.000	0.243	0.015	0.000	23
24	4.06	Delton Properties, LLC	TLE	0.122	0.000	0.000	0.000	0.122	0.008	0.000	24
25	4.06	Richard A. Libbey and Eva A. Libbey, Trustees of the Richard A. Libbey and Eva A. Libbey Revocable Trust dated January 16, 2002, as amended and/or restated	FEE & TLE	0.069	0.001	0.000	0.001	0.068	0.007	0.000	25
50	4.04, 4.06	AT&T Wisconsin	Release of Rights	0.000	0.000	0.000	0.000	0.000	0.000	0.000	
51	4.06	WE Energies-Electric	Release of Rights	0.000	0.000	0.000	0.000	0.000	0.000	0.000	
52	4.06	WE Energies-Gas	Release of Rights	0.000	0.000	0.000	0.000	0.000	0.000	0.000	
53	4.05	City of West Allis	Release of Rights	0.000	0.000	0.000	0.000	0.000	0.000	0.000	
54	4.06	Milwaukee Metropolitan Sewerage District	Release of Rights	0.000	0.000	0.000	0.000	0.000	0.000	0.000	

REVISION DATE	DATE: 01/29/2021	SCALE, FEET 	HWY: W. NATIONAL AVENUE	R/W PROJECT NUMBER: 2410-13-00	PLAT SHEET 4.02
			COUNTY: MILWAUKEE	CONSTRUCTION PROJECT NUMBER: 2410-13-70	PS&E SHEET <b>E</b>

CONCRETE MONUMENT  
W/BRASS CAP  
N=377,005.18  
E=2,535,783.84



CITY



4

4

1/4 SECTION LINE

NW-NE  
SEC 3-6-21

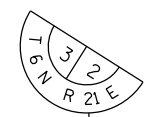
1/16 LINE

W. GREENFIELD AVENUE  
SECTION LINE

OF

BEGIN RELOCATION ORDER  
STA. 5+61.01  
N=376,546.47  
E=2,536,937.07

CONCRETE MONUMENT  
W/BRASS CAP  
N=377,093.51  
E=2,538,444.98



4+00 5+00 6+00 7+00 8+00 9+00 10+00 11+00 12+00 13+00 14+00 15+00 16+00 17+00

W. NATIONAL AVENUE

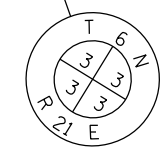
S. 65TH STREET

S. 64TH STREET

S. 63RD STREET

S. 62ND STREET

END RELOCATION ORDER  
STA. 14+72.93  
N=377,038.14  
E=2,537,705.09

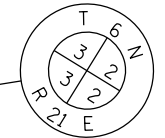


CONCRETE MONUMENT  
W/BRASS CAP  
N=377,005.18  
E=2,535,783.84

NE-NE  
SEC 3-6-21

WEST ALLIS

CONCRETE MONUMENT  
W/BRASS CAP  
N=374,695.12  
E=2,538,486.48



REVISION DATE	DATE: 01/29/2021	SCALE, FEET 0 50 100	HWY: W. NATIONAL AVENUE	R/W PROJECT NUMBER: 2410-13-00	PLAT SHEET 4.03
	GRID FACTOR 0.99992401		COUNTY: MILWAUKEE	CONSTRUCTION PROJECT NUMBER: 2410-13-70	PS&E SHEET

NOTE: THE TLE'S DO NOT INCLUDE ANY PART OF BUILDINGS

RECIPROCAL EASEMENT BETWEEN OWNERS OF LOTS 14 AND 15, BLOCK 1, C.A. MAYNARD'S SUBDIVISION NO. 3 FOR USE, REPAIR AND MAINTENANCE OF WATER LINES AND LATERALS THROUGH BUILDINGS AND REAL ESTATE THEREON WHICH CONNECT TO MUNICIPAL WATER SYSTEM AND MUNICIPAL WATER METERS PER DOCUMENT NO. 4751790.

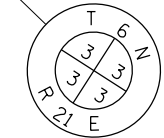
4

4

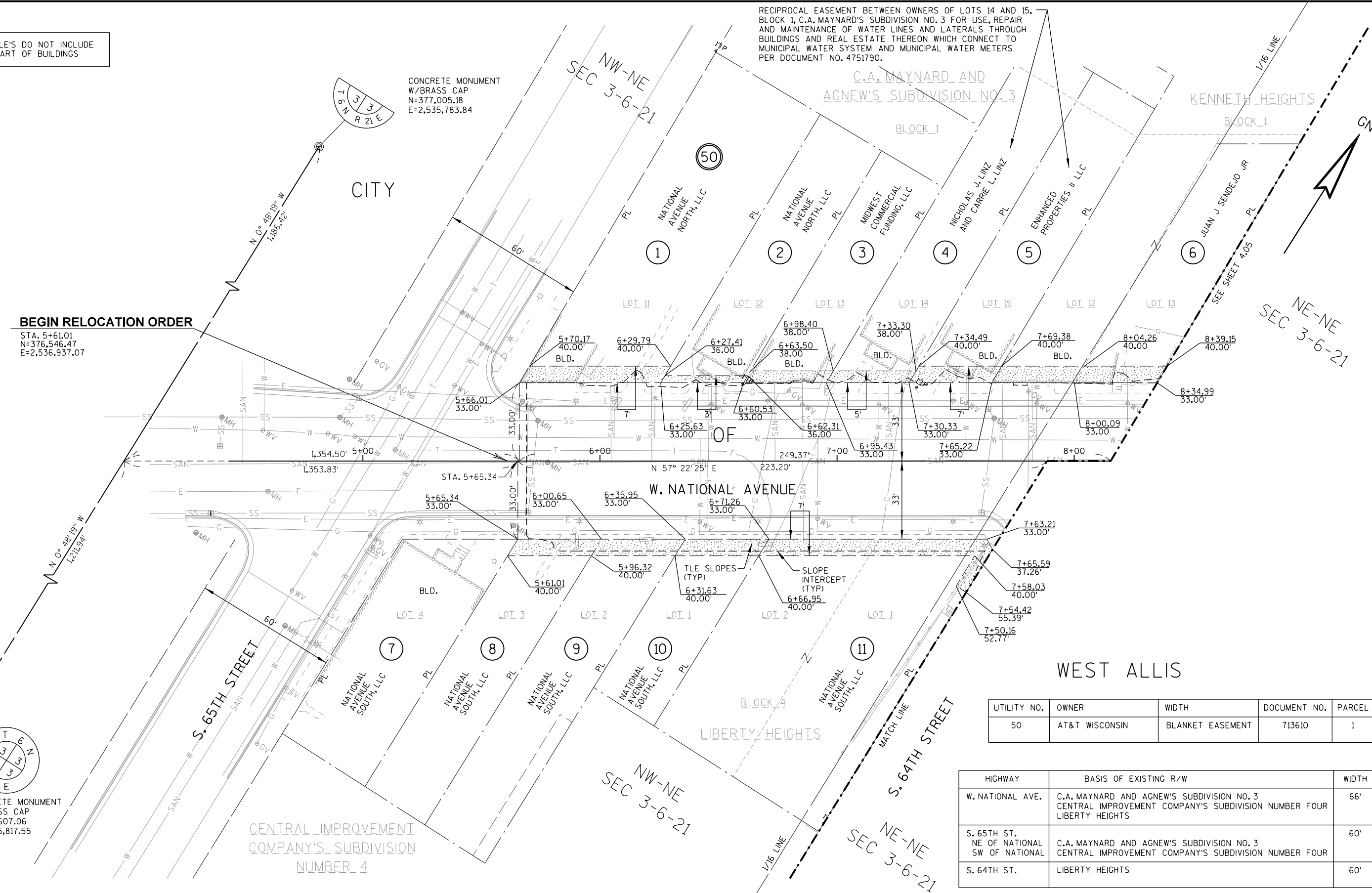
**BEGIN RELOCATION ORDER**

STA. 5+61.01  
N=376,546.47  
E=2,536,937.07

CONCRETE MONUMENT  
W/BRASS CAP  
N=377,005.18  
E=2,535,783.84



CONCRETE MONUMENT  
W/BRASS CAP  
N=374,607.06  
E=2,535,817.55



UTILITY NO.	OWNER	WIDTH	DOCUMENT NO.	PARCEL
50	AT&T WISCONSIN	BLANKET EASEMENT	713610	1

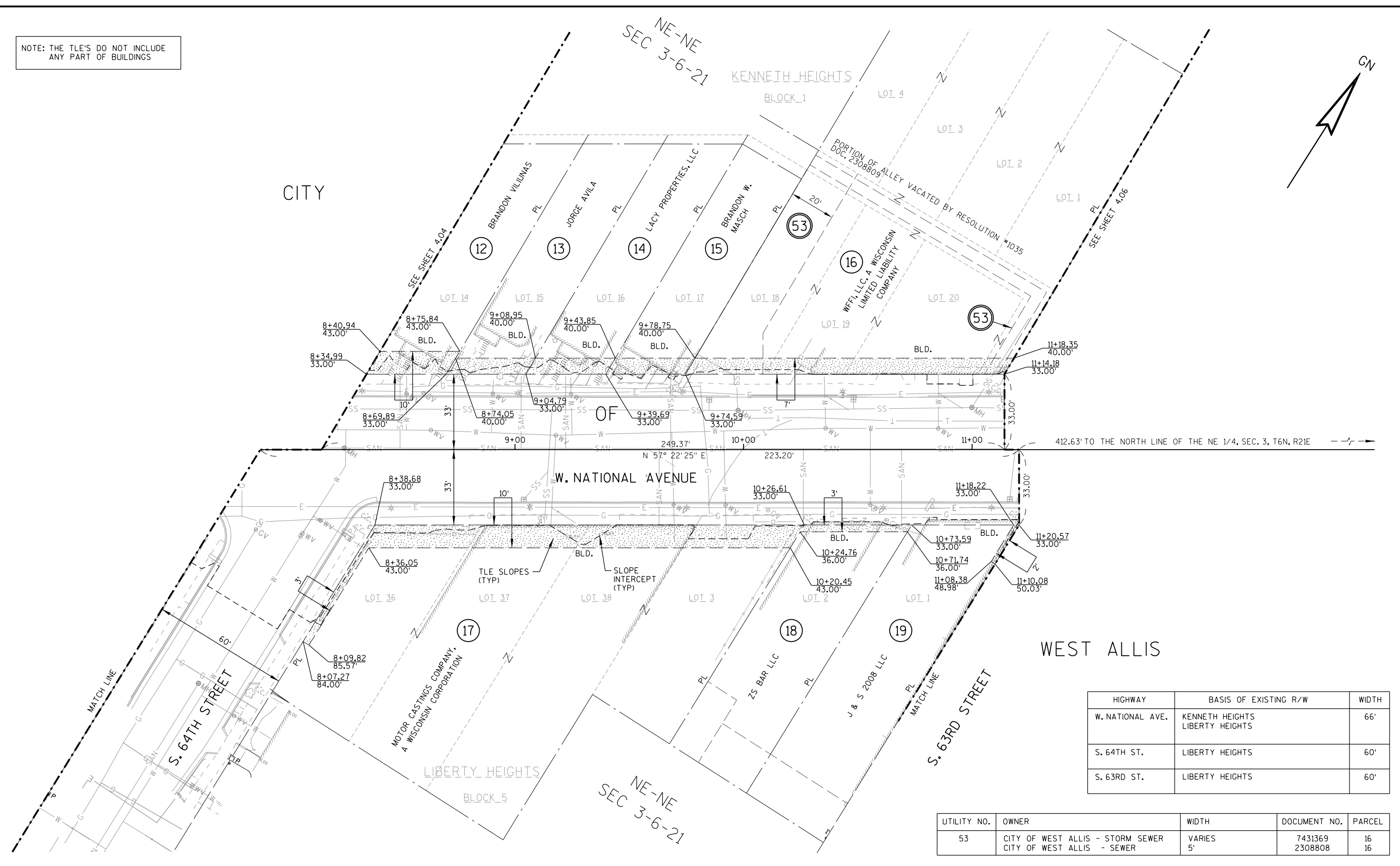
HIGHWAY	BASIS OF EXISTING R/W	WIDTH
W. NATIONAL AVE.	C.A. MAYNARD AND AGNEW'S SUBDIVISION NO. 3 CENTRAL IMPROVEMENT COMPANY'S SUBDIVISION NUMBER FOUR LIBERTY HEIGHTS	66'
S. 65TH ST. NE OF NATIONAL SW OF NATIONAL	C.A. MAYNARD AND AGNEW'S SUBDIVISION NO. 3 CENTRAL IMPROVEMENT COMPANY'S SUBDIVISION NUMBER FOUR	60'
S. 64TH ST.	LIBERTY HEIGHTS	60'

REVISION DATE	DATE: 01/29/2021	SCALE, FEET 0 20 40	HWY: W. NATIONAL AVE	R/W PROJECT NUMBER: 2410-13-00	PLAT SHEET 4.04
	GRID FACTOR 0.99992401		COUNTY: MILWAUKEE	CONSTRUCTION PROJECT NUMBER: 2410-13-70	PS&E SHEET

NOTE: THE TLE'S DO NOT INCLUDE ANY PART OF BUILDINGS

4

4



HIGHWAY	BASIS OF EXISTING R/W	WIDTH
W. NATIONAL AVE.	KENNETH HEIGHTS LIBERTY HEIGHTS	66'
S. 64TH ST.	LIBERTY HEIGHTS	60'
S. 63RD ST.	LIBERTY HEIGHTS	60'

UTILITY NO.	OWNER	WIDTH	DOCUMENT NO.	PARCEL
53	CITY OF WEST ALLIS - STORM SEWER CITY OF WEST ALLIS - SEWER	VARIES 5'	7431369 2308808	16 16

REVISION DATE	DATE: 01/29/2021	SCALE, FEET 0 20 40	HWY: W. NATIONAL AVE	R/W PROJECT NUMBER: 2410-13-00	PLAT SHEET 4.05
	GRID FACTOR 0.99992401		COUNTY: MILWAUKEE	CONSTRUCTION PROJECT NUMBER: 2410-13-70	PS&E SHEET

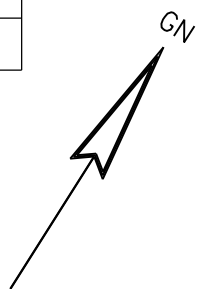


CURVE DATA					
CURVE	RADIUS	ARC LENGTH	CHORD BEARING	CHORD LENGTH	CENTRAL ANGLE
C1	7.00'	14.86'	N 61°48'32" W	12.22'	121°38'06"

NOTE: THE TLE'S DO NOT INCLUDE ANY PART OF BUILDINGS

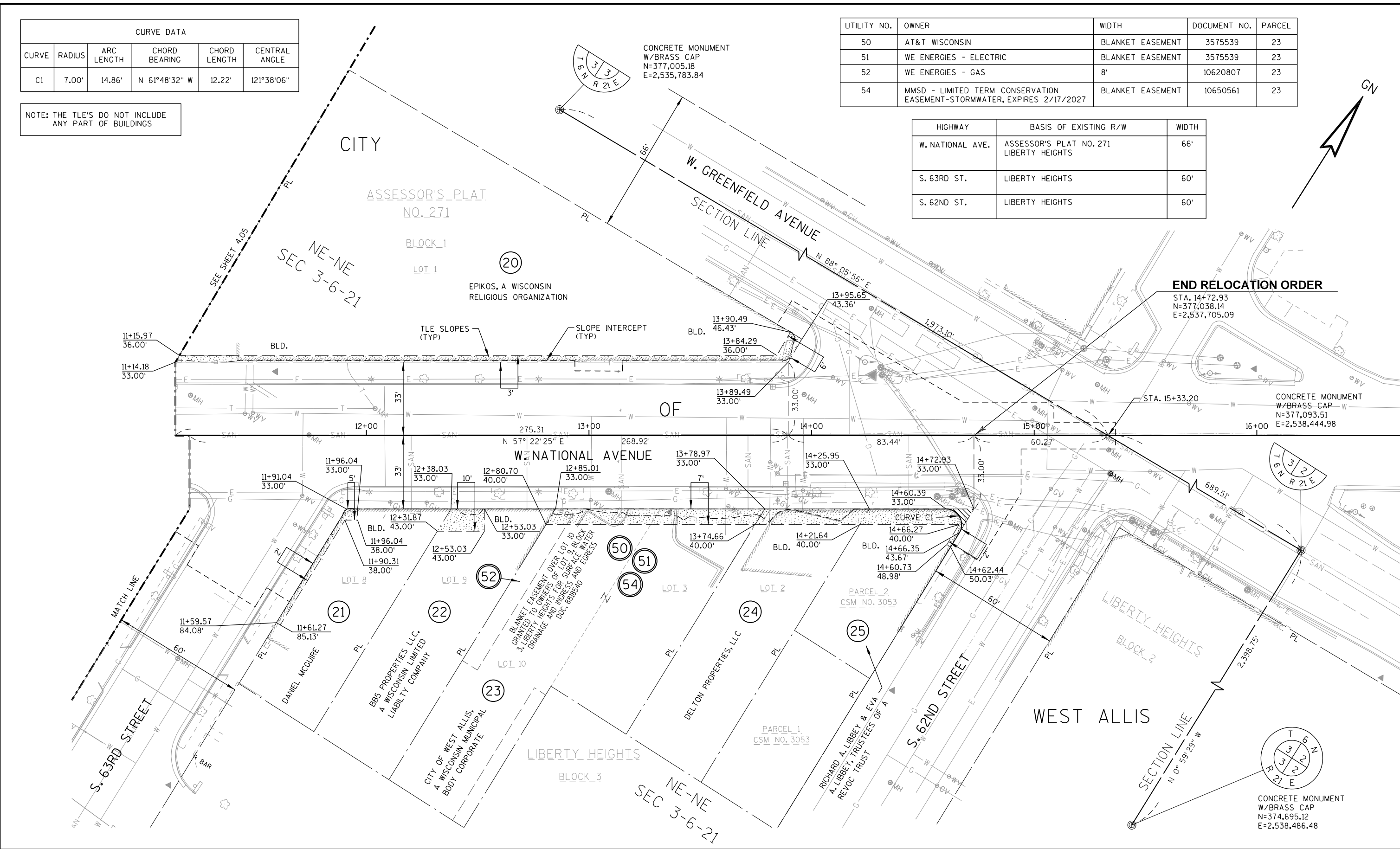
UTILITY NO.	OWNER	WIDTH	DOCUMENT NO.	PARCEL
50	AT&T WISCONSIN	BLANKET EASEMENT	3575539	23
51	WE ENERGIES - ELECTRIC	BLANKET EASEMENT	3575539	23
52	WE ENERGIES - GAS	8'	10620807	23
54	MMSD - LIMITED TERM CONSERVATION EASEMENT-STORMWATER, EXPIRES 2/17/2027	BLANKET EASEMENT	10650561	23

HIGHWAY	BASIS OF EXISTING R/W	WIDTH
W. NATIONAL AVE.	ASSESSOR'S PLAT NO. 271 LIBERTY HEIGHTS	66'
S. 63RD ST.	LIBERTY HEIGHTS	60'
S. 62ND ST.	LIBERTY HEIGHTS	60'



4

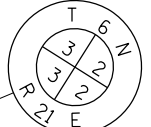
4



**END RELOCATION ORDER**

STA. 14+72.93  
N=377,038.14  
E=2,537,705.09

CONCRETE MONUMENT  
W/BRASS-CAP  
N=377,093.51  
E=2,538,444.98



CONCRETE MONUMENT  
W/BRASS-CAP  
N=374,695.12  
E=2,538,486.48

REVISION DATE	DATE: 01/29/2021	SCALE, FEET 0 20 40	HWY: W. NATIONAL AVE	R/W PROJECT NUMBER: 2410-13-00	PLAT SHEET 4.06
	GRID FACTOR 0.99992401		COUNTY: MILWAUKEE	CONSTRUCTION PROJECT NUMBER: 2410-13-70	PS&E SHEET