



**Peter C. Daniels, P.E.**  
City Engineer  
Engineering Department  
pdaniels@westalliswi.gov  
414.302.8360

April 16, 2019

Honorable Mayor and Common Council  
West Allis, Wisconsin

Dear Mayor and Council Members:

I herewith respectfully submit my report on the assessment of benefits for major asphalt resurfacing, miscellaneous walk repair, miscellaneous driveway repair, storm sewer relay, sanitary sewer relay, water main relay, building services and utility adjustments in:

**S. 113 St. from W. Greenfield Ave. to W. Lapham St.,  
S. 116 St. from W. Greenfield Ave. to Union Pacific Railroad and  
W. Cleveland Ave. from S. 72 St. to S. 76 St.**

as directed in Preliminary Resolution No. R-2018-0674, adopted on November 5, 2018.

This report consists of the following schedules attached hereto:

- Schedule A. - Preliminary Plans and Specifications;
- Schedule B. - Estimate of Entire Cost of Proposed Improvements;
- Schedule C. - Schedule of Proposed Assessments Against Each Parcel Affected.

The properties against which the assessments are proposed are benefited.

Respectfully submitted,

Peter C. Daniels, P.E.  
City Engineer

/ns

Encs.

**PROPOSED IMPROVEMENT OF**

**S. 113 St. from W. Greenfield Ave. to W. Lapham St.,  
S. 116 St. from W. Greenfield Ave. to Union Pacific Railroad and  
W. Cleveland Ave. from S. 72 St. to S. 76 St.**

by major asphalt resurfacing, miscellaneous walk repair, miscellaneous driveway repair, storm sewer relay, sanitary sewer relay, water main relay, building services and utility adjustments

**SCHEDULE "A"**

Preliminary Plans & Specifications Attached

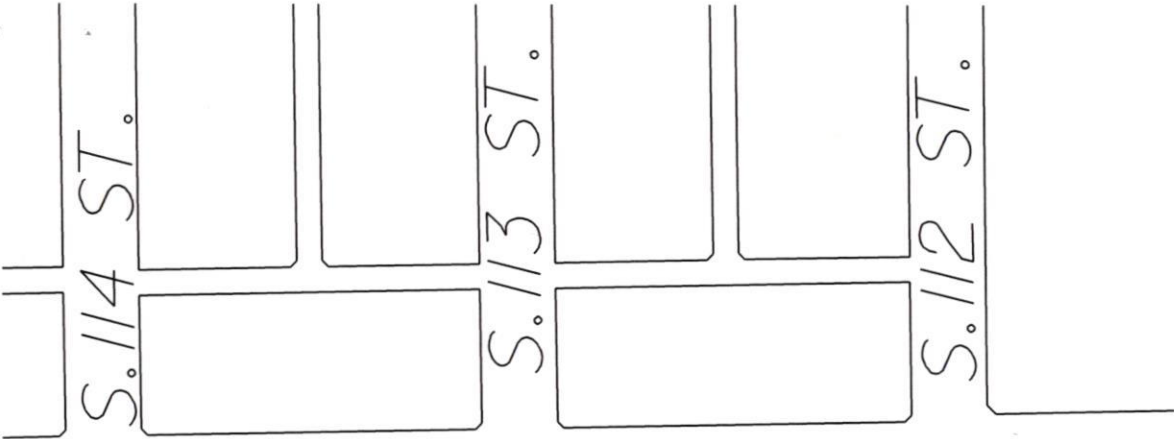
**SCHEDULE "B"**

Estimate of the Entire Cost

\$1,118,700

**SCHEDULE "C"**

Schedule of Proposed Assessments  
Against Each Parcel Affected



S. 114 ST.

S. 113 ST.

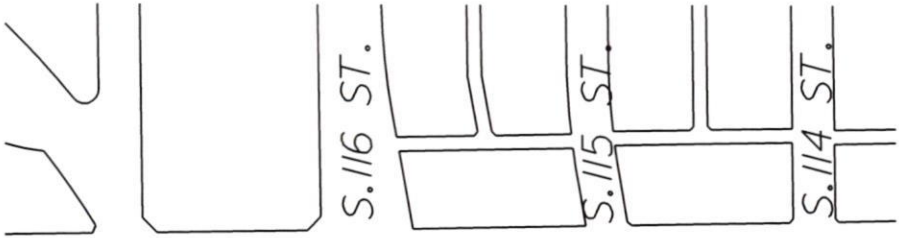
S. 112 ST.

W. GREENFIELD AVE.

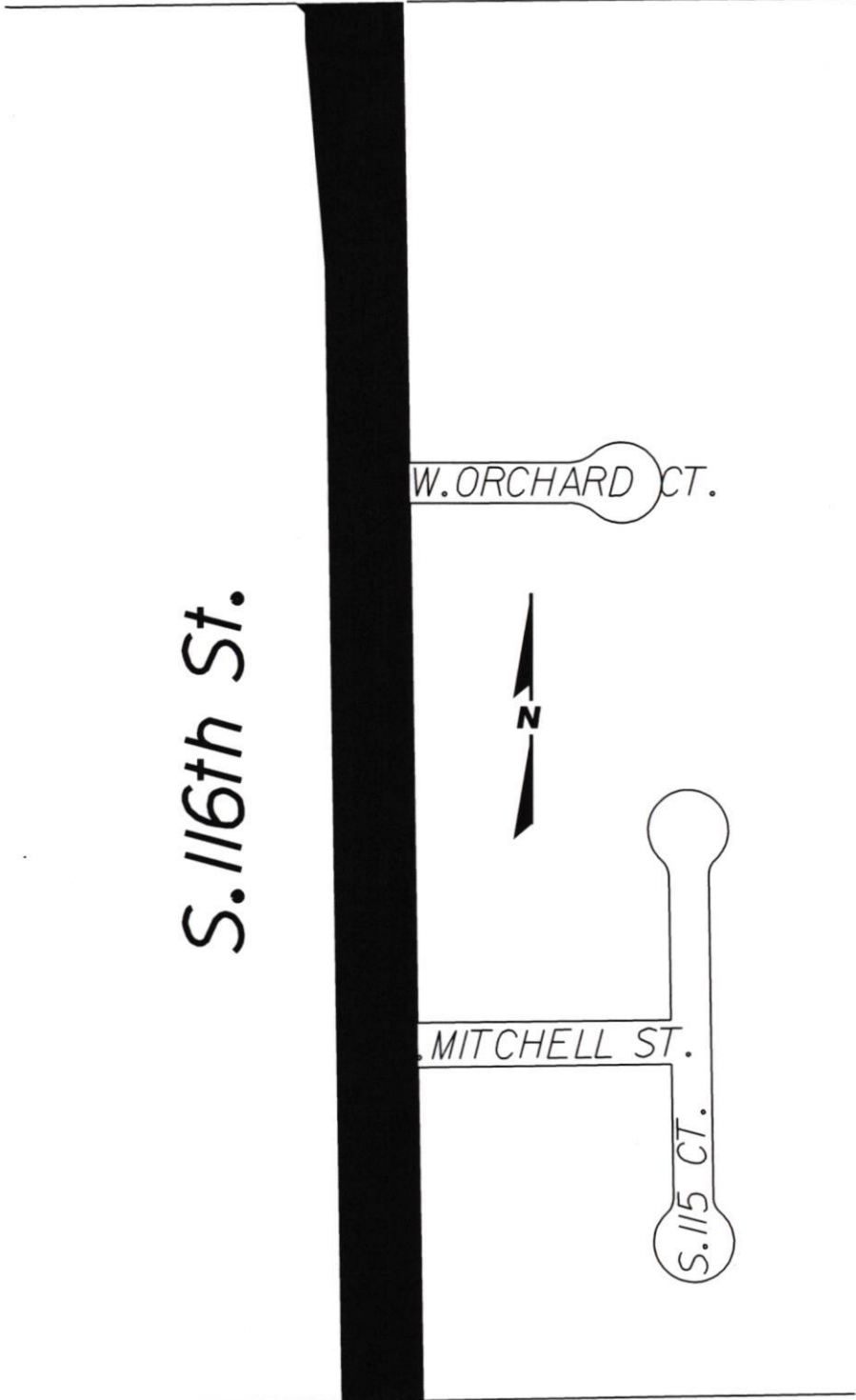
S. 113th St.



W. LAPHAM ST.



W.GREENFIELD AVE.



S.116th St.

W. ORCHARD CT.



MITCHELL ST.



S.115 CT.

WISCONSIN ELECTRIC POWER CO.  
UNION PACIFIC RR.

S.76 ST.

S.75 ST.

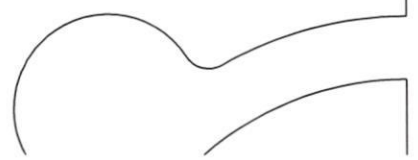
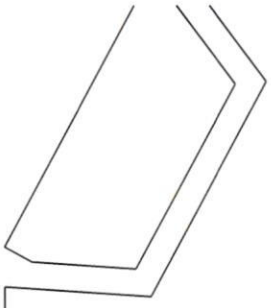
W. Cleveland Ave.

S. VAN DYKE PL.

S.72 ST.

S.75 ST.

S.74 ST.





**Peter C. Daniels, P.E.**  
City Engineer  
Engineering Department  
pdaniels@westalliswi.gov  
414.302.8360

April 16, 2019

Board of Public Works  
West Allis City Hall  
West Allis, Wisconsin

Dear Board Members:

I am herewith submitting preliminary plans and an estimate of costs for the major asphalt resurfacing, miscellaneous walk repair, miscellaneous driveway repair, storm sewer relay, sanitary sewer relay, water main relay, building services and utility adjustments in:

**S. 113 St. from W. Greenfield Ave. to W. Lapham St.,  
S. 116 St. from W. Greenfield Ave. to Union Pacific Railroad, and  
W. Cleveland Ave. from S. 72 St. to S. 76 St.**

Estimated Construction Cost:	\$1,017,000
Contingency:	101,700
<b>TOTAL:</b>	<b>\$1,118,700</b>

Sincerely,

Peter C. Daniels, P.E.  
City Engineer

/ns

ASSESSMENT REPORT FOR COUNCIL

HEARING DATE: April 16, 2019

LOCATION

DESCRIPTION: S. 113 St. from W. Greenfield Ave. to W. Lapham St.  
S. 116 St. from W. Greenfield Ave. to Union Pacific Railroad  
W. Cleveland Ave. from S. 72 St. to S. 76 St.

ACCOUNT NO.: P1928S, P1929S, P1938S

INTEREST RATE: 4.0%

<u>2019 ASSESSMENT RATES</u>	<u>Resid.</u>	<u>Comm.</u>	<u>Mfg.</u>
<u>Streets</u>			
Major Asphalt Resurface, lin. ft.	\$49.38	\$61.72	\$74.06

*The properties against which the assessments are proposed are benefited.*



City of West Allis Engineering Department  
 Project Details P1928S

S. 113 St. from W. Greenfield Ave. to W. Lapham St.

**Property Assessments**

448-9992-003	11233 W GREENFIELD AVE - 1434-44S 113 ST	Swordfish LLC	61.72 x	112.00 Lin Ft	= \$	6,912.64	40.00	Commercial	10
	Street Major Asphalt Resurface								\$ 2,765.06
	Reduction Code Longside								
	Street Major Asphalt Resurface		61.72 x	501.73 Lin Ft	= \$	30,966.78	100.00		\$30,966.78
									Total: \$33,731.84
448-9992-004	1540 S 113 ST	PSI Of Wisconsin LLP	61.72 x	176.00 Lin Ft	= \$	10,862.72	100.00	Commercial	20
	Street Major Asphalt Resurface								\$10,862.72
									Total: \$10,862.72
448-9992-005	11214-50 W LAPHAM ST	WATC LLC & c/o RP Mallery Group LLC	61.72 x	183.47 Lin Ft	= \$	11,323.77	100.00	Commercial	30
	Street Major Asphalt Resurface								\$11,323.77
									Total: \$11,323.77
448-9992-002	113** W GREENFIELD AVE	Albatross Properties LLC	61.72 x	195.61 Lin Ft	= \$	12,073.05	40.00	Commercial	40
	Street Major Asphalt Resurface								\$ 4,829.22
	Reduction Code Longside								
									Total: \$ 4,829.22
448-9989-009	1433 S 113 ST	RJB Properties LLC	61.72 x	88.00 Lin Ft	= \$	5,431.36	100.00	Commercial	50
	Street Major Asphalt Resurface								\$ 5,431.36
									Total: \$ 5,431.36
448-9990-001	1445 & 1501 S 113 ST	RJB Properties, LLC	61.72 x	227.00 Lin Ft	= \$	14,010.44	100.00	Commercial	60
	Street Major Asphalt Resurface								\$14,010.44
									Total: \$14,010.44
448-9991-001	1513 S 113 ST	G & B Adventures LLC	61.72 x	110.00 Lin Ft	= \$	6,789.20	100.00	Commercial	70
	Street Major Asphalt Resurface								\$ 6,789.20
									Total: \$ 6,789.20





448-9991-002	1523R & 1529 S 113	G & B Adventures LLC	61.72 x	110.00 Lin Ft	= \$	6,789.20	100.00	Commercial	80
	Street Major Asphalt Resurface								
								Total: \$	6,789.20
448-9991-005	15** S 113 ST	Mark Pitzka	61.72 x	110.00 Lin Ft	= \$	6,789.20	100.00	Commercial	90
	Street Major Asphalt Resurface								
								Total: \$	6,789.20
448-9991-004	1555 S 113 ST	Mark Pitzka	61.72 x	162.20 Lin Ft	= \$	10,010.98	100.00	Commercial	100
	Street Major Asphalt Resurface								
								Total: \$	10,010.98

**Property Type Summary**

10 Commercial

**Item Summary**

Street	Total Quantity	Gross Total	Net Total
Major Asphalt Resurface			
Commercial	1,976.01 Lin Ft	\$121,959.34	\$110,567.93
		<u>\$121,959.34</u>	<u>\$110,567.93</u>
<b>Grand Totals</b>		\$121,959.34	\$110,567.93



City of West Allis Engineering Department  
 Project Details P1929S  
 W. Cleveland Ave. from S. 72 St. to S. 76 St.

**Property Assessments**

489-0548-000	2665 S 72 ST	Wis Telephone Co							10
	Street Major Asphalt Resurface	49.38 x	120.00 Lin Ft	= \$	5,925.60	40.00	\$	2,370.24	
	Reduction Code Longside								
	Exempt Property Charged as Residential								
	Street Major Asphalt Resurface	49.38 x	155.22 Lin Ft	= \$	7,664.76	100.00	\$	7,664.76	
	Exempt Property Charged as Residential								
					<b>Total:</b>			<b>\$10,035.00</b>	
489-0539-000	7302 W CLEVELAND AVE	Robert J Ranthum & Betty Ranthum							20
	Street Major Asphalt Resurface	49.38 x	100.00 Lin Ft	= \$	4,938.00	100.00	\$	4,938.00	
					<b>Total:</b>			<b>\$ 4,938.00</b>	
489-0538-000	7316 W CLEVELAND AVE	William Cook & Ashley Fair							30
	Street Major Asphalt Resurface	49.38 x	64.26 Lin Ft	= \$	3,173.16	100.00	\$	3,173.16	
					<b>Total:</b>			<b>\$ 3,173.16</b>	
489-0537-000	7326 W CLEVELAND AVE	Nicholas S Gerard & Tammie L Gerard							40
	Street Major Asphalt Resurface	49.38 x	60.00 Lin Ft	= \$	2,962.80	100.00	\$	2,962.80	
					<b>Total:</b>			<b>\$ 2,962.80</b>	
489-0536-000	7334 W CLEVELAND AVE	Michael Lamott & Theresa Lamott							50
	Street Major Asphalt Resurface	49.38 x	60.00 Lin Ft	= \$	2,962.80	100.00	\$	2,962.80	
					<b>Total:</b>			<b>\$ 2,962.80</b>	
489-0535-000	7340 W CLEVELAND AVE	Kathleen A Davis							60
	Street Major Asphalt Resurface	49.38 x	60.00 Lin Ft	= \$	2,962.80	100.00	\$	2,962.80	
					<b>Total:</b>			<b>\$ 2,962.80</b>	
489-0534-000	7400 W CLEVELAND AVE	Janice A Prelog							70
	Street Major Asphalt Resurface	49.38 x	60.00 Lin Ft	= \$	2,962.80	100.00	\$	2,962.80	
					<b>Total:</b>			<b>\$ 2,962.80</b>	



City of West Allis Engineering Department  
 Project Details P1929S

W. Cleveland Ave. from S. 72 St. to S. 76 St.

489-0533-000	7414 W CLEVELAND AVE	Joseph E Morgese	Residential	80
	Street Major Asphalt Resurface	49.38 x 60.00 Lin Ft	= \$ 2,962.80	100.00 \$ 2,962.80
			Total: \$ 2,962.80	
489-0532-000	2680 S 75 ST	Joseph F Fujinaka & Catherine M Fujinaka	Residential	90
	Street Major Asphalt Resurface	49.38 x 130.00 Lin Ft	= \$ 6,419.40	40.00 \$ 2,567.76
	Reduction Code Longside		Total: \$ 2,567.76	
489-0513-000	2685 S 75 ST	Robert W Pasko, Jr & Victoria M Pasko	Residential	100
	Street Major Asphalt Resurface	49.38 x 120.00 Lin Ft	= \$ 5,925.60	40.00 \$ 2,370.24
	Reduction Code Longside		Total: \$ 2,370.24	
489-0512-000	2664 S 76 ST	Shannon Gauthier	Residential	110
	Street Major Asphalt Resurface	49.38 x 120.00 Lin Ft	= \$ 5,925.60	40.00 \$ 2,370.24
	Reduction Code Longside		Total: \$ 2,370.24	
515-0161-000	2709 S 72 ST	Mary Skladanek	Residential	120
	Street Major Asphalt Resurface	49.38 x 67.55 Lin Ft	= \$ 3,335.62	100.00 \$ 3,335.62
			Total: \$ 3,335.62	
515-0160-000	7213 W CLEVELAND AVE	Moranda M Medina-Lopez	Residential	130
	Street Major Asphalt Resurface	49.38 x 60.00 Lin Ft	= \$ 2,962.80	100.00 \$ 2,962.80
			Total: \$ 2,962.80	
515-0159-000	7219 W CLEVELAND AVE	Richard & Constance Trevisan Living Trust	Residential	140
	Street Major Asphalt Resurface	49.38 x 60.00 Lin Ft	= \$ 2,962.80	100.00 \$ 2,962.80
			Total: \$ 2,962.80	



City of West Allis Engineering Department  
 Project Details P1929S

W. Cleveland Ave. from S. 72 St. to S. 76 St.

515-0158-000	7229 W CLEVELAND AVE	Jane H Kieliszewski	49.38 x	60.00 Lin Ft	= \$	2,962.80	100.00	\$ 2,962.80	Residential	150
	Street Major Asphalt Resurface							<u>Total: \$ 2,962.80</u>		
515-0157-000	7237 W CLEVELAND AVE	Brian A Scheerer	49.38 x	60.00 Lin Ft	= \$	2,962.80	100.00	\$ 2,962.80	Residential	160
	Street Major Asphalt Resurface							<u>Total: \$ 2,962.80</u>		
515-0156-000	7245 W CLEVELAND AVE	Emilie Karpiuk	49.38 x	60.00 Lin Ft	= \$	2,962.80	100.00	\$ 2,962.80	Residential	170
	Street Major Asphalt Resurface							<u>Total: \$ 2,962.80</u>		
515-0155-000	7307 W CLEVELAND AVE	Michael Honisch & Pamela Honisch	49.38 x	60.00 Lin Ft	= \$	2,962.80	100.00	\$ 2,962.80	Residential	180
	Street Major Asphalt Resurface							<u>Total: \$ 2,962.80</u>		
515-0154-000	7313 W CLEVELAND AVE	Paul R Koester & Carol D Koester	49.38 x	60.25 Lin Ft	= \$	2,975.14	100.00	\$ 2,975.14	Residential	190
	Street Major Asphalt Resurface							<u>Total: \$ 2,975.14</u>		
515-0153-000	7323 W CLEVELAND AVE	Milan J Bosnic	49.38 x	60.15 Lin Ft	= \$	2,970.21	100.00	\$ 2,970.21	Residential	200
	Street Major Asphalt Resurface							<u>Total: \$ 2,970.21</u>		
515-0152-000	2714 S 74 ST	Tyler J Gallenberg & Sarah J Glowacki	49.38 x	61.74 Lin Ft	= \$	3,048.72	100.00	\$ 3,048.72	Residential	210
	Street Major Asphalt Resurface							<u>Total: \$ 3,048.72</u>		
515-0142-000	7407 W CLEVELAND AVE	Wayne M Maddox & Christine E Maddox	49.38 x	131.06 Lin Ft	= \$	6,471.74	40.00	\$ 2,588.70	Residential	220
	Street Major Asphalt Resurface							<u>Total: \$ 2,588.70</u>		
	Reduction Code Longside									



City of West Allis Engineering Department  
 Project Details P1929S  
 W. Cleveland Ave. from S. 72 St. to S. 76 St.

515-0151-000	2704 S 75 ST	Michael Schmidt & Judith Schmidt	Residential	230
Street Major Asphalt Resurface	49.38 x 127.88 Lin Ft	= \$ 6,314.71	40.00	\$ 2,525.88
Reduction Code Longside				<u>Total: \$ 2,525.88</u>

515-0014-000	2705 S 75 ST	Kenneth F Nycz	Residential	240
Street Major Asphalt Resurface	49.38 x 140.00 Lin Ft	= \$ 6,913.20	40.00	\$ 2,765.28
Reduction Code Longside				<u>Total: \$ 2,765.28</u>

515-0013-000	7525 W CLEVELAND AVE	Bryan A Burkel & Lisa M Breitsch	Residential	250
Street Major Asphalt Resurface	49.38 x 100.00 Lin Ft	= \$ 4,938.00	40.00	\$ 1,975.20
Reduction Code Longside				<u>Total: \$ 1,975.20</u>

**Property Type Summary**

25 Residential

**Item Summary**

Street	Total Quantity	Gross Total	Net Total
Major Asphalt Resurface	2,218.11 Lin Ft	\$109,530.26	\$80,229.95
Residential		<u>\$109,530.26</u>	<u>\$80,229.95</u>
<b>Grand Totals</b>		\$109,530.26	\$80,229.95



City of West Allis Engineering Department  
 Project Details P1938S

S. 116 St. from W. Greenfield Ave. to Union Pacific Railroad.

**Property Assessments**

448-9987-004 11505 W GREENFIELD AVE Heartland West Allis Courtyard LLC & c/o MSP F Commercial 10  
 Street Major Asphalt Resurface 61.72 x 225.90 Lin Ft = \$ 13,942.55 100.00 \$13,942.55  
 Total: \$13,942.55

448-9987-007 1440-1450 S 116 ST BGB Investments LLC Commercial 20  
 Street Major Asphalt Resurface 61.72 x 260.00 Lin Ft = \$ 16,047.20 100.00 \$16,047.20  
 Total: \$16,047.20

448-0032-001 1500 S 116 ST JDH 1 Investments LLC & 1500 S. 116 LLC Commercial 30  
 Street Major Asphalt Resurface 61.72 x 95.00 Lin Ft = \$ 5,863.40 100.00 \$ 5,863.40  
 Total: \$ 5,863.40

448-0031-001 1516 S 116 ST Elez Family Trust Commercial 40  
 Street Major Asphalt Resurface 61.72 x 105.00 Lin Ft = \$ 6,480.60 100.00 \$ 6,480.60  
 Total: \$ 6,480.60

448-0164-000 1530 S 116 ST APT A Elez Marital Trust Residential 50  
 Street Major Asphalt Resurface 49.38 x 13.00 Lin Ft = \$ 641.94 100.00 \$ 641.94  
 Reduction Code Condo Shared Expense

448-0165-000 1530 S 116 ST APT B Elez Marital Trust Residential 60  
 Street Major Asphalt Resurface 49.38 x 13.00 Lin Ft = \$ 641.94 100.00 \$ 641.94  
 Reduction Code Condo Shared Expense

448-0166-000 1530 S 116 ST APT C Elez Marital Trust Residential 70  
 Street Major Asphalt Resurface 49.38 x 13.00 Lin Ft = \$ 641.94 100.00 \$ 641.94  
 Reduction Code Condo Shared Expense



City of West Allis Engineering Department  
 Project Details P1938S

S. 116 St. from W. Greenfield Ave. to Union Pacific Railroad.

448-0167-000	1530 S 116 ST APT D	Elez Marital Trust	49.38 x	13.00 Lin Ft	Residential	80
Street Major Asphalt Resurface			= \$	641.94	100.00	\$ 641.94
	Reduction Code Condo Shared Expense				Total: \$	641.94
448-0168-000	1530 S 116 ST APT E	Elez Marital Trust	49.38 x	13.00 Lin Ft	Residential	90
Street Major Asphalt Resurface			= \$	641.94	100.00	\$ 641.94
	Reduction Code Condo Shared Expense				Total: \$	641.94
448-0169-000	1530 S 116 ST APT F	Elez Marital Trust	49.38 x	13.00 Lin Ft	Residential	100
Street Major Asphalt Resurface			= \$	641.94	100.00	\$ 641.94
	Reduction Code Condo Shared Expense				Total: \$	641.94
448-0170-000	1530 S 116 ST	Elez Marital Trust	49.38 x	13.00 Lin Ft	Residential	110
Street Major Asphalt Resurface			= \$	641.94	100.00	\$ 641.94
	Reduction Code Condo Shared Expense				Total: \$	641.94
448-0171-000	1530 S 116 ST APT H	Elez Marital Trust	49.38 x	13.00 Lin Ft	Residential	120
Street Major Asphalt Resurface			= \$	641.94	100.00	\$ 641.94
	Reduction Code Condo Shared Expense				Total: \$	641.94
448-0157-000	1552 S 116 ST APT B	Elez Family Trust	49.38 x	15.75 Lin Ft	Residential	130
Street Major Asphalt Resurface			= \$	777.74	100.00	\$ 777.74
	Reduction Code Condo Shared Expense				Total: \$	777.74



City of West Allis Engineering Department  
 Project Details P1938S

S. 116 St. from W. Greenfield Ave. to Union Pacific Railroad.

448-0156-000	1552 S 116 ST APT A	Elez Family Trust	49.38 x	15.75 Lin Ft	Residential	140
	Street Major Asphalt Resurface		= \$	777.74	100.00	\$ 777.74
	Reduction Code Condo Shared Expense					Total: \$ 777.74
448-0158-000	1552 S 116 ST APT C	Elez Family Trust	49.38 x	15.75 Lin Ft	Residential	150
	Street Major Asphalt Resurface		= \$	777.74	100.00	\$ 777.74
	Reduction Code Condo Shared Expense					Total: \$ 777.74
448-0159-000	1552 S 116 ST APT D	Elez Family Trust	49.38 x	15.75 Lin Ft	Residential	160
	Street Major Asphalt Resurface		= \$	777.74	100.00	\$ 777.74
	Reduction Code Condo Shared Expense					Total: \$ 777.74
448-0161-000	1552 S 116 ST APT F	Elez Family Trust	49.38 x	15.75 Lin Ft	Residential	170
	Street Major Asphalt Resurface		= \$	777.74	100.00	\$ 777.74
	Reduction Code Condo Shared Expense					Total: \$ 777.74
448-0160-000	1552 S 116 ST	Elez Family Trust	49.38 x	15.75 Lin Ft	Residential	180
	Street Major Asphalt Resurface		= \$	777.74	100.00	\$ 777.74
	Reduction Code Condo Shared Expense					Total: \$ 777.74
448-0162-000	1552 S 116 ST APT G	Elez Family Trust	49.38 x	15.75 Lin Ft	Residential	190
	Street Major Asphalt Resurface		= \$	777.74	100.00	\$ 777.74
	Reduction Code Condo Shared Expense					Total: \$ 777.74





City of West Allis Engineering Department  
Project Details P1938S

S. 116 St. from W. Greenfield Ave. to Union Pacific Railroad.

448-0163-000	1552 S 116 ST APT H	Elez Family Trust	49.38 x	15.75 Lin Ft	= \$	777.74	100.00	\$	777.74	Residential	200
	Street Major Asphalt Resurface										
									<u>Total: \$</u>		<u>777.74</u>
448-0001-000	1606 S 116 ST	Schultz Real Estate LLC	61.72 x	144.32 Lin Ft	= \$	8,907.43	100.00	\$	8,907.43	Commercial	210
	Street Major Asphalt Resurface										
									<u>Total: \$</u>		<u>8,907.43</u>
448-0002-000	1616 S 116 ST	Frank Grad & Maria Grad	61.72 x	100.00 Lin Ft	= \$	6,172.00	100.00	\$	6,172.00	Commercial	220
	Street Major Asphalt Resurface										
									<u>Total: \$</u>		<u>6,172.00</u>
448-0003-000	1634 S 116 ST	Frank Grad & Maria Grad	61.72 x	100.00 Lin Ft	= \$	6,172.00	100.00	\$	6,172.00	Commercial	230
	Street Major Asphalt Resurface										
									<u>Total: \$</u>		<u>6,172.00</u>
448-0004-000	1650 S 116 ST	Frank Grad Revocable Trust	61.72 x	100.00 Lin Ft	= \$	6,172.00	100.00	\$	6,172.00	Commercial	240
	Street Major Asphalt Resurface										
									<u>Total: \$</u>		<u>6,172.00</u>
448-0005-000	1662 S 116 ST	Frank Grad & Maria Grad	61.72 x	100.00 Lin Ft	= \$	6,172.00	100.00	\$	6,172.00	Commercial	250
	Street Major Asphalt Resurface										
									<u>Total: \$</u>		<u>6,172.00</u>
448-0006-000	1700 S 116 ST	Schultz Real Estate LLC	61.72 x	100.00 Lin Ft	= \$	6,172.00	100.00	\$	6,172.00	Commercial	260
	Street Major Asphalt Resurface										
									<u>Total: \$</u>		<u>6,172.00</u>
448-0007-000	1716 S 116 ST	Robert P Hahn & Doreen C Hahn	61.72 x	100.00 Lin Ft	= \$	6,172.00	100.00	\$	6,172.00	Commercial	270
	Street Major Asphalt Resurface										
									<u>Total: \$</u>		<u>6,172.00</u>



City of West Allis Engineering Department  
 Project Details P1938S

S. 116 St. from W. Greenfield Ave. to Union Pacific Railroad.

448-0008-000	1730 S 116 ST	Hugo Cossentino & Lorenza Cossentino	61.72 x	100.00 Lin Ft	Commercial	280
	Street Major Asphalt Resurface		= \$	6,172.00	100.00	\$ 6,172.00
					Total:	\$ 6,172.00
448-0009-000	1744 S 116 ST	Greenfield Garden LLC	61.72 x	100.00 Lin Ft	Commercial	290
	Street Major Asphalt Resurface		= \$	6,172.00	100.00	\$ 6,172.00
					Total:	\$ 6,172.00
448-0010-000	1760 S 116 ST	Greenfield Garden LLC	61.72 x	100.91 Lin Ft	Commercial	300
	Street Major Asphalt Resurface		= \$	6,228.17	100.00	\$ 6,228.17
					Total:	\$ 6,228.17
447-9999-000	14** S 116 ST	Milwaukee County	49.38 x	120.00 Lin Ft	Exempt County	310
	Street Major Asphalt Resurface		= \$	5,925.60	40.00	\$ 2,370.24
	Reduction Code Longside					
	Exempt Property Charged as Residential					
	Street Major Asphalt Resurface		= \$	96,478.64	100.00	\$ 96,478.64
	Exempt Property Charged as Residential				Total:	\$ 98,848.88

**Property Type Summary**

14	Commercial
17	Residential



City of West Allis Engineering Department  
 Project Details P1938S

S. 116 St. from W. Greenfield Ave. to Union Pacific Railroad.

**Item Summary**

Street	Total Quantity	Gross Total	Net Total
Major Asphalt Resurface			
Commercial	1,731.13 Lin Ft	\$106,845.35	\$106,845.35
Residential	2,303.80 Lin Ft	\$113,761.68	\$110,206.32
		<u>\$220,607.03</u>	<u>\$217,051.67</u>
<b>Grand Totals</b>		\$220,607.03	\$217,051.67