



**ENGINEERING DEPARTMENT**

**Michael G. Lewis**

*Director of Public Works / City Engineer*

414/302-8360

414/302-8366 (Fax)

City Hall

7525 West Greenfield Avenue

West Allis, Wisconsin 53214

[www.westalliswi.gov](http://www.westalliswi.gov)

[mlewis@westalliswi.gov](mailto:mlewis@westalliswi.gov)

November 17, 2015

Honorable Mayor and Common Council  
West Allis, Wisconsin

Dear Mayor and Council Members:

I herewith respectfully submit my report on the assessment of benefits for concrete reconstruction with miscellaneous walk, new driveway approaches, storm sewer, storm sewer relay, sanitary sewer relay, water main relay, building services and utility adjustments in:

**S. 89 St. from W. National Ave. to W. Lincoln Ave.,  
W. Rogers St. from S. 92 St. to east of S. 89 St.  
and portions of intersecting streets**

as directed in Preliminary Resolution No. R-2015-0186, adopted on September 1, 2015.

This report consists of the following schedules attached hereto:

Schedule A. - Preliminary Plans and Specifications;

Schedule B. - Estimate of Entire Cost of Proposed Improvements;

Schedule C. - Schedule of Proposed Assessments Against Each Parcel Affected.

The properties against which the assessments are proposed are benefited.

Respectfully submitted,

A handwritten signature in black ink, appearing to read "Michael G. Lewis".

Michael G. Lewis, P.E.

Director of Public Works/City Engineer

MGL:ns

Encs.

**PROPOSED IMPROVEMENT OF**

**S. 89 St. from W. National Ave. to W. Lincoln Ave.,  
W. Rogers St. from S. 92 St. to east of S. 89 St.,  
and portions of intersecting streets**

by concrete reconstruction with miscellaneous walk, new driveway approaches, storm sewer,  
storm sewer relay, sanitary sewer relay, water main relay, building services and utility  
adjustments

**SCHEDULE "A"**

Preliminary Plans & Specifications Attached

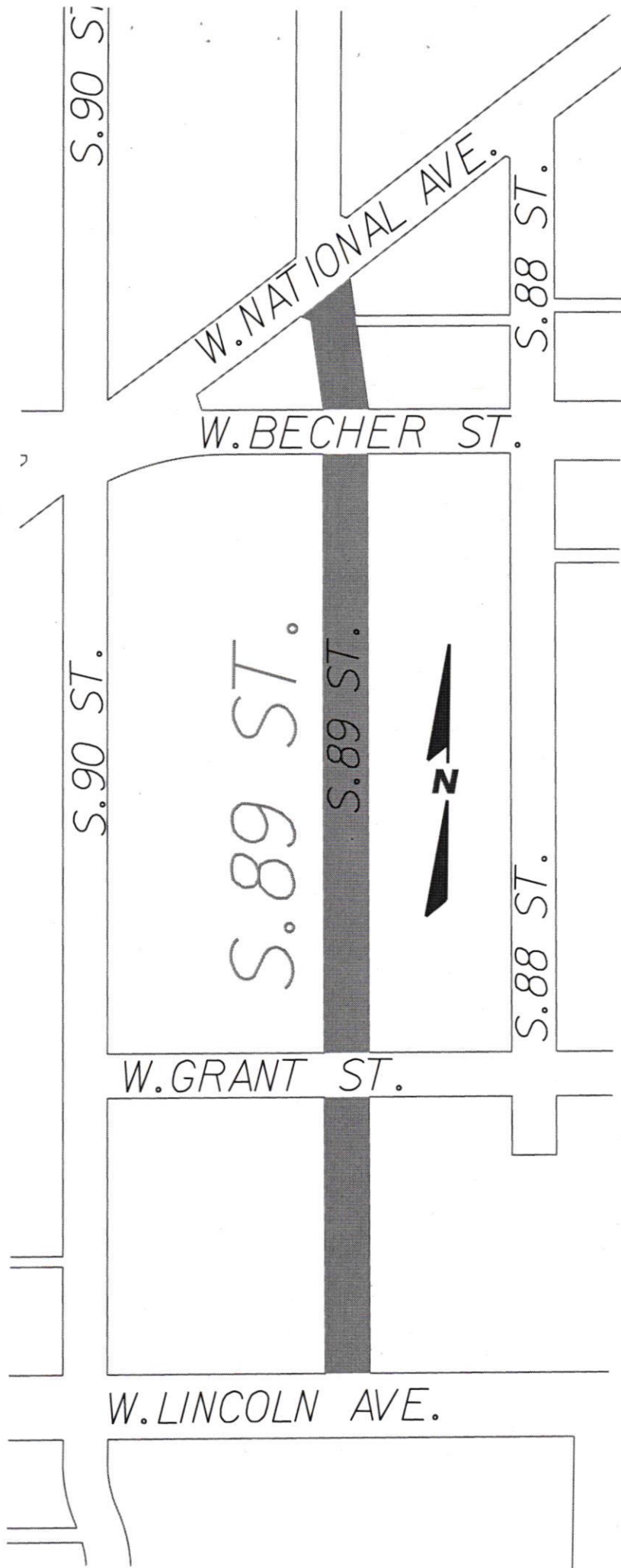
**SCHEDULE "B"**

Estimate of the Entire Cost

\$846,000

**SCHEDULE "C"**

Schedule of Proposed Assessments  
Against Each Parcel Affected



S. 90 ST.

W. NATIONAL AVE.

S. 88 ST.

W. BECHER ST.

S. 90 ST.

S. 89 ST.

S. 89 ST.



S. 88 ST.

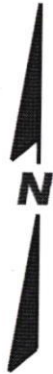
W. GRANT ST.

W. LINCOLN AVE.

UNION PACIFIC RR.

W. ROGERS ST.

S. 92 ST.



S. 91 ST.

S. 90 ST.

S. 89 ST.

W. NATIONAL AVE.

S. 88 ST.

W. BECHER ST.



**ENGINEERING DEPARTMENT**

**Michael G. Lewis**  
*Director of Public Works / City Engineer*

414/302-8360  
414/302-8366 (Fax)

City Hall  
7525 West Greenfield Avenue  
West Allis, Wisconsin 53214

[www.westalliswi.gov](http://www.westalliswi.gov)  
[mlewis@westalliswi.gov](mailto:mlewis@westalliswi.gov)

November 17, 2015

Board of Public Works  
West Allis City Hall  
West Allis, Wisconsin

Dear Board Members:

I am herewith submitting preliminary plans and an estimate of costs for the concrete reconstruction with miscellaneous walk, new driveway approaches, storm sewer, storm sewer relay, sanitary sewer relay, water main relay, building services and utility adjustments in:

**S. 89 St. from W. National Ave. to W. Lincoln Ave.,  
W. Rogers St. from S. 92 St. to east of S. 89 St.,  
and portions of intersecting streets**

Estimated Construction Cost:	\$769,000
Contingency:	77,000
<b>TOTAL:</b>	<b>\$846,000</b>

Sincerely,

A handwritten signature in black ink, appearing to read "Michael G. Lewis".

Michael G. Lewis, P.E.  
Director of Public Works/City Engineer

MGL:ns

**ASSESSMENT REPORT FOR COUNCIL**

**HEARING DATE: November 17, 2015**

**LOCATION**

**DESCRIPTION:** S. 89 St. from W. National Ave. to W. Lincoln Ave.  
W. Rogers St. from S. 92 St. to east of S. 89 St.

**ACCOUNT NO.:** P1621S, P1628S

**INTEREST RATE:** 4.0%

<u>2016 ASSESSMENT RATES</u>	<u>Resid.</u>	<u>Comm.</u>	<u>Mfg.</u>
<u>Streets</u>			
New Construction, lin. ft.	\$55.32	\$69.15	\$82.98
<u>Driveways</u>			
7" Concrete Approach, sq. ft.	\$ 6.90	\$ 6.90	\$ 6.90

*The properties against which the assessments are proposed are benefited.*



City of West Allis Engineering Department  
 Project Details P1621S

W. Rogers St. from S. 92 St. to east of S. 89 St.

**Property Assessments**

478-9987-001	8750 W NATIONAL AVE	Community Housing Devel Inc & c/o Sunrise Ap	55.32 x 60.00 Lin Ft	= \$	3,319.20	100.00	\$ 3,319.20	10
	Street Concrete Reconstruction							
		Exempt Property Charged as Residential						
							<u>Total: \$ 3,319.20</u>	
478-0122-000	8802 W ROGERS ST	Keith Schueler	55.32 x 40.62 Lin Ft	= \$	2,247.10	100.00	\$ 2,247.10	20
	Street Concrete Reconstruction							
	Driveway 7" Concrete Approach		6.90 x 62.50 Sq Ft	= \$	431.25	100.00	\$ 431.25	
							<u>Total: \$ 2,678.35</u>	
478-0121-000	8808 W ROGERS ST	Kyle M Doberstein	55.32 x 40.00 Lin Ft	= \$	2,212.80	100.00	\$ 2,212.80	30
	Street Concrete Reconstruction							
	Driveway 7" Concrete Approach		6.90 x 67.50 Sq Ft	= \$	465.75	100.00	\$ 465.75	
							<u>Total: \$ 2,678.55</u>	
478-0120-000	8814 W ROGERS ST	Jacob A Heinitz	55.32 x 40.00 Lin Ft	= \$	2,212.80	100.00	\$ 2,212.80	40
	Street Concrete Reconstruction							
	Driveway 7" Concrete Approach		6.90 x 70.00 Sq Ft	= \$	483.00	100.00	\$ 483.00	
							<u>Total: \$ 2,695.80</u>	
478-0119-000	8820 W ROGERS ST	Golden Valley Investments LLC	55.32 x 60.00 Lin Ft	= \$	3,319.20	100.00	\$ 3,319.20	50
	Street Concrete Reconstruction							
	Driveway 7" Concrete Approach		6.90 x 75.00 Sq Ft	= \$	517.50	100.00	\$ 517.50	
							<u>Total: \$ 3,836.70</u>	
478-0118-000	8826 W ROGERS ST	Fabian Babiash & Bonnie Nedved	55.32 x 45.00 Lin Ft	= \$	2,489.40	100.00	\$ 2,489.40	60
	Street Concrete Reconstruction							
							<u>Total: \$ 2,489.40</u>	



City of West Allis Engineering Department  
Project Details P1621S

W. Rogers St. from S. 92 St. to east of S. 89 St.

478-0133-001	1971-73 S 89 ST	Nicholas J Martorano & Katherine Martorano	Residential	70
Street Concrete Reconstruction	55.32 x 127.00 Lin Ft	= \$	7,025.64	40.00 \$ 2,810.26
Driveway 7" Concrete Approach	6.90 x 115.00 Sq Ft	= \$	793.50	100.00 \$ 793.50
			Total:	\$ 3,603.76
478-0135-001	1972 S 90 ST	Steven J Schreiner	Residential	80
Street Concrete Reconstruction	55.32 x 127.00 Lin Ft	= \$	7,025.64	40.00 \$ 2,810.26
Driveway 7" Concrete Approach	6.90 x 90.00 Sq Ft	= \$	621.00	100.00 \$ 621.00
			Total:	\$ 3,431.26
478-0161-000	9004 W ROGERS ST	Patrick J Gibbons	Residential	90
Street Concrete Reconstruction	55.32 x 127.00 Lin Ft	= \$	7,025.64	40.00 \$ 2,810.26
Driveway 7" Concrete Approach	6.90 x 115.00 Sq Ft	= \$	793.50	100.00 \$ 793.50
			Total:	\$ 3,603.76
478-0162-001	1974-76 S 91 ST	EBMW Properties LLC	Residential	100
Street Concrete Reconstruction	55.32 x 127.00 Lin Ft	= \$	7,025.64	40.00 \$ 2,810.26
Driveway 7" Concrete Approach	6.90 x 90.00 Sq Ft	= \$	621.00	100.00 \$ 621.00
			Total:	\$ 3,431.26
478-0183-000	1973-75 S 91 ST	Stacy M Linscott	Residential	110
Street Concrete Reconstruction	55.32 x 127.00 Lin Ft	= \$	7,025.64	40.00 \$ 2,810.26
Driveway 7" Concrete Approach	6.90 x 125.00 Sq Ft	= \$	862.50	100.00 \$ 862.50
			Total:	\$ 3,672.76





City of West Allis Engineering Department  
 Project Details P1621S

W. Rogers St. from S. 92 St. to east of S. 89 St.

478-0184-000	1974 S 92 ST	Judith K Schenk			Residential	120
	Street Concrete Reconstruction	55.32 x	127.00 Lin Ft	= \$	7,025.64	40.00 \$ 2,810.26
	Reduction Code Longside					
	Driveway 7" Concrete Approach	6.90 x	127.50 Sq Ft	= \$	879.75	100.00 \$ 879.75
					Total:	\$ 3,690.01
478-0270-002	8803 W ROGERS ST	Charles Lorenz & Sandra Lorenz			Residential	130
	Street Concrete Reconstruction	55.32 x	41.00 Lin Ft	= \$	2,268.12	100.00 \$ 2,268.12
	Driveway 7" Concrete Approach	6.90 x	97.50 Sq Ft	= \$	672.75	100.00 \$ 672.75
					Total:	\$ 2,940.87
478-0270-003	8807-09 W ROGERS ST	Gavin Garcia & Sara Garcia			Residential	140
	Street Concrete Reconstruction	55.32 x	57.62 Lin Ft	= \$	3,187.54	100.00 \$ 3,187.54
	Driveway 7" Concrete Approach	6.90 x	85.00 Sq Ft	= \$	586.50	100.00 \$ 586.50
					Total:	\$ 3,774.04
478-0277-000	2000 S 89 ST	Kimberli Byrns			Residential	150
	Street Concrete Reconstruction	55.32 x	127.00 Lin Ft	= \$	7,025.64	40.00 \$ 2,810.26
	Reduction Code Longside					
	Driveway 7" Concrete Approach	6.90 x	130.00 Sq Ft	= \$	897.00	100.00 \$ 897.00
					Total:	\$ 3,707.26
478-0248-000	2001 S 89 & 8907 W ROGERS	Jeanne M Martel			Residential	160
	Street Concrete Reconstruction	55.32 x	127.00 Lin Ft	= \$	7,025.64	40.00 \$ 2,810.26
	Reduction Code Longside					
	Driveway 7" Concrete Approach	6.90 x	140.00 Sq Ft	= \$	966.00	0.00 \$ 0.00
	Reduction Code 0-15 Years (Free)				Total:	\$ 2,810.26



City of West Allis Engineering Department  
 Project Details P1621S

W. Rogers St. from S. 92 St. to east of S. 89 St.

478-0269-000	2002 S 90 ST	Mark A Sity & Carla J Sity	55.32 x	127.00 Lin Ft	= \$	7,025.64	40.00	Residential	170
	Street Concrete Reconstruction								\$ 2,810.26
	Reduction Code Longside								
	Driveway 7" Concrete Approach		6.90 x	110.00 Sq Ft	= \$	759.00	100.00		759.00
								Total:	<u>\$ 3,569.26</u>
478-0223-000	2001 S 90 & 9007 W ROGERS	Matthew C Heffer	55.32 x	127.00 Lin Ft	= \$	7,025.64	40.00	Residential	180
	Street Concrete Reconstruction								\$ 2,810.26
	Reduction Code Longside								
								Total:	<u>\$ 2,810.26</u>
478-0247-000	2000 S 91 ST	Jamie R Dlugi	55.32 x	127.00 Lin Ft	= \$	7,025.64	40.00	Residential	190
	Street Concrete Reconstruction								\$ 2,810.26
	Reduction Code Longside								
	Driveway 7" Concrete Approach		6.90 x	85.00 Sq Ft	= \$	586.50	100.00		586.50
								Total:	<u>\$ 3,396.76</u>
478-0197-000	2001 S 91 ST	Shawn M Piekarski & Margaret J Piekarski	55.32 x	127.00 Lin Ft	= \$	7,025.64	40.00	Residential	200
	Street Concrete Reconstruction								\$ 2,810.26
	Reduction Code Longside								
	Driveway 7" Concrete Approach		6.90 x	110.00 Sq Ft	= \$	759.00	100.00		759.00
								Total:	<u>\$ 3,569.26</u>
478-0220-000	2004 S 92 ST	Sheryl A Kranz	55.32 x	10.00 Lin Ft	= \$	553.20	100.00	Residential	210
	Street Concrete Reconstruction								\$ 553.20
	Reduction Code Longside								
	Driveway 7" Concrete Approach		6.90 x	62.50 Sq Ft	= \$	431.25	100.00		431.25
								Total:	<u>\$ 984.45</u>



City of West Allis Engineering Department  
 Project Details P1621S

W. Rogers St. from S. 92 St. to east of S. 89 St.

478-0221-000	2000 S 92 ST	Mark Milan & Jeanne Milan	220
Street Concrete Reconstruction	55.32 x 117.00 Lin Ft	= \$ 6,472.44	40.00 \$ 2,588.98
Reduction Code Longside			
Driveway 7" Concrete Approach	6.90 x 145.00 Sq Ft	= \$ 1,000.50	100.00 \$ 1,000.50
		Total:	\$ 3,589.48

**Property Type Summary**

22 Residential

**Item Summary**

	Total Quantity	Gross Total	Net Total
Driveway			
7" Concrete Approach	1,902.50 Sq Ft	\$13,127.25	\$12,161.25
Residential		\$13,127.25	\$12,161.25
Street			
Concrete Reconstruction	2,035.24 Lin Ft	\$112,589.48	\$58,121.46
Residential		\$112,589.48	\$58,121.46
<b>Grand Totals</b>		\$125,716.73	\$70,282.71



City of West Allis Engineering Department  
 Project Details P1628S

S. 89 St. from W. National Ave. to W. Lincoln Ave.

**Property Assessments**

478-0069-000	8820-24 W BECHER ST	Janocik and Janocik LLC	69.15 x	121.13 Lin Ft	= \$	8,376.14	40.00	\$	3,350.46	10
	Street Concrete Reconstruction									
	Reduction Code Longside									
									<u>Total: \$</u>	
478-0336-000	8823 W BECHER ST	Jamie Gordon & Sara Gordon	55.32 x	120.00 Lin Ft	= \$	6,638.40	40.00	\$	2,655.36	20
	Street Concrete Reconstruction									
	Reduction Code Longside									
	Driveway 7" Concrete Approach		6.90 x	91.00 Sq Ft	= \$	627.90	0.00	\$	0.00	
	Reduction Code 0-15 Years (Free)									
									<u>Total: \$</u>	
478-0337-000	2114-16 S 89 ST	Matthew S Sylla	55.32 x	48.00 Lin Ft	= \$	2,655.36	100.00	\$	2,655.36	30
	Street Concrete Reconstruction		6.90 x	97.50 Sq Ft	= \$	672.75	100.00	\$	672.75	
	Driveway 7" Concrete Approach								<u>Total: \$</u>	
									3,328.11	40
478-0342-000	2118 S 89 ST	Michelle R Rismeyer	55.32 x	39.00 Lin Ft	= \$	2,157.48	100.00	\$	2,157.48	40
	Street Concrete Reconstruction		6.90 x	97.50 Sq Ft	= \$	672.75	100.00	\$	672.75	
	Driveway 7" Concrete Approach								<u>Total: \$</u>	
									2,830.23	50
478-0344-000	2124 S 89 ST	Jeremy D Hintz & Amy R Hintz	55.32 x	38.00 Lin Ft	= \$	2,102.16	100.00	\$	2,102.16	50
	Street Concrete Reconstruction		6.90 x	97.50 Sq Ft	= \$	672.75	100.00	\$	672.75	
	Driveway 7" Concrete Approach								<u>Total: \$</u>	
									2,774.91	



City of West Allis Engineering Department  
 Project Details P1628S

S. 89 St. from W. National Ave. to W. Lincoln Ave.

478-0346-000	2128 S 89 ST	Nanci L Dillon				Residential	60
	Street Concrete Reconstruction	55.32 x	38.70 Lin Ft	= \$	2,140.88	100.00	\$ 2,140.88
	Driveway 7" Concrete Approach	6.90 x	104.00 Sq Ft	= \$	717.60	100.00	\$ 717.60
					<u>Total: \$ 2,858.48</u>		
478-0348-000	2132 S 89 ST	Robert F Wuttke & Anita Wuttke				Residential	70
	Street Concrete Reconstruction	55.32 x	35.00 Lin Ft	= \$	1,936.20	100.00	\$ 1,936.20
	Driveway 7" Concrete Approach	6.90 x	97.50 Sq Ft	= \$	672.75	100.00	\$ 672.75
					<u>Total: \$ 2,608.95</u>		
478-0350-000	2136-38 S 89 ST	Shannon E Johannsen & Duane S Johannsen				Residential	80
	Street Concrete Reconstruction	55.32 x	40.00 Lin Ft	= \$	2,212.80	100.00	\$ 2,212.80
	Driveway 7" Concrete Approach	6.90 x	104.00 Sq Ft	= \$	717.60	100.00	\$ 717.60
					<u>Total: \$ 2,930.40</u>		
478-0352-000	2140 S 89 ST	Kathleen A Zemanovic				Residential	90
	Street Concrete Reconstruction	55.32 x	35.00 Lin Ft	= \$	1,936.20	100.00	\$ 1,936.20
	Driveway 7" Concrete Approach	6.90 x	100.80 Sq Ft	= \$	695.52	0.00	\$ 0.00
					<u>Total: \$ 2,631.72</u>		
					Reduction Code 0-15 Years (Free)		
478-0354-000	2144-46 S 89 ST	NEED LLC				Residential	100
	Street Concrete Reconstruction	55.32 x	40.00 Lin Ft	= \$	2,212.80	100.00	\$ 2,212.80
	Driveway 7" Concrete Approach	6.90 x	97.50 Sq Ft	= \$	672.75	100.00	\$ 672.75
					<u>Total: \$ 2,885.55</u>		
478-0356-000	2148 S 89 ST	Michael G Pflughoeft				Residential	110
	Street Concrete Reconstruction	55.32 x	40.00 Lin Ft	= \$	2,212.80	100.00	\$ 2,212.80
	Driveway 7" Concrete Approach	6.90 x	97.50 Sq Ft	= \$	672.75	100.00	\$ 672.75
					<u>Total: \$ 2,885.55</u>		



City of West Allis Engineering Department  
 Project Details P1628S

S. 89 St. from W. National Ave. to W. Lincoln Ave.

478-0358-000	2154 S 89 ST	Carl S Kjer & Susan K Kjer	Residential	120
	Street Concrete Reconstruction	55.32 x 35.00 Lin Ft	= \$ 1,936.20	100.00 \$ 1,936.20
	Driveway 7" Concrete Approach	6.90 x 91.00 Sq Ft	= \$ 627.90	0.00 \$ 0.00

Reduction Code 0-15 Years (Free)

Total: \$ 1,936.20

478-0360-000	2158-60 S 89 ST	William K Fagerland & Barbara L Fagerland	Residential	130
	Street Concrete Reconstruction	55.32 x 75.00 Lin Ft	= \$ 4,149.00	100.00 \$ 4,149.00
	Driveway 7" Concrete Approach	6.90 x 97.50 Sq Ft	= \$ 672.75	100.00 \$ 672.75

Total: \$ 4,821.75

478-0362-000	2164-66 S 89 ST	Brian M Salentine	Residential	140
	Street Concrete Reconstruction	55.32 x 37.50 Lin Ft	= \$ 2,074.50	100.00 \$ 2,074.50
	Driveway 7" Concrete Approach	6.90 x 97.50 Sq Ft	= \$ 672.75	100.00 \$ 672.75

Total: \$ 2,747.25

478-0363-000	2168-70 S 89 ST	Timothy C Devine	Residential	150
	Street Concrete Reconstruction	55.32 x 37.50 Lin Ft	= \$ 2,074.50	100.00 \$ 2,074.50
	Driveway 7" Concrete Approach	6.90 x 91.00 Sq Ft	= \$ 627.90	0.00 \$ 0.00

Reduction Code 0-15 Years (Free)

Total: \$ 2,074.50

478-0366-000	2174 S 89 ST	David A Halverson	Residential	160
	Street Concrete Reconstruction	55.32 x 50.00 Lin Ft	= \$ 2,766.00	100.00 \$ 2,766.00
	Driveway 7" Concrete Approach	6.90 x 91.00 Sq Ft	= \$ 627.90	0.00 \$ 0.00

Reduction Code 0-15 Years (Free)

Total: \$ 2,766.00



City of West Allis Engineering Department  
 Project Details P1628S

S. 89 St. from W. National Ave. to W. Lincoln Ave.

478-0368-000	2180 S 89 ST	Christopher B Klein		Residential	170
	Street Concrete Reconstruction	55.32 x	50.00 Lin Ft	= \$ 2,766.00	100.00 \$ 2,766.00
	Driveway 7" Concrete Approach	6.90 x	97.50 Sq Ft	= \$ 672.75	0.00 \$ 0.00
	Reduction Code 0-15 Years (Free)				
				Total: \$	<u>2,766.00</u>
478-0369-000	2186 S 89 & 8820 W GRANT ST	Michael Macaluso		Residential	180
	Street Concrete Reconstruction	55.32 x	50.00 Lin Ft	= \$ 2,766.00	100.00 \$ 2,766.00
				Total: \$	<u>2,766.00</u>
478-0371-000	2200 S 89 ST	Cheryl A Scherer		Residential	190
	Street Concrete Reconstruction	55.32 x	35.00 Lin Ft	= \$ 1,936.20	100.00 \$ 1,936.20
				Total: \$	<u>1,936.20</u>
478-0372-000	2204-06 S 89 ST	Sara R Topczewski		Residential	200
	Street Concrete Reconstruction	55.32 x	40.00 Lin Ft	= \$ 2,212.80	100.00 \$ 2,212.80
	Driveway 7" Concrete Approach	6.90 x	70.00 Sq Ft	= \$ 483.00	100.00 \$ 483.00
				Total: \$	<u>2,695.80</u>
478-0375-000	2210 S 89 ST	John Harrits		Residential	210
	Street Concrete Reconstruction	55.32 x	37.50 Lin Ft	= \$ 2,074.50	100.00 \$ 2,074.50
	Driveway 7" Concrete Approach	6.90 x	70.00 Sq Ft	= \$ 483.00	100.00 \$ 483.00
				Total: \$	<u>2,557.50</u>
478-0377-001	2216 S 89 ST	Robert W Wallschlaeger		Residential	220
	Street Concrete Reconstruction	55.32 x	37.50 Lin Ft	= \$ 2,074.50	100.00 \$ 2,074.50
	Driveway 7" Concrete Approach	6.90 x	75.00 Sq Ft	= \$ 517.50	100.00 \$ 517.50
				Total: \$	<u>2,592.00</u>



City of West Allis Engineering Department  
 Project Details P1628S

S. 89 St. from W. National Ave. to W. Lincoln Ave.

478-0379-000	2226 S 89 ST	EBMW Properties LLC	Commercial	230
	Street Concrete Reconstruction	69.15 x	= \$ 5,186.25	100.00 \$ 5,186.25
	Driveway 7" Concrete Approach	6.90 x	= \$ 603.75	100.00 \$ 603.75
			Total: \$ 5,790.00	
478-0383-000	8822-4 W LINCOLN AVE & 2244 S 89 ST	John Miller	Commercial	240
	Street Concrete Reconstruction	69.15 x	= \$ 10,434.74	40.00 \$ 4,173.90
	Reduction Code Longside			
	Driveway 7" Concrete Approach	6.90 x	= \$ 724.50	100.00 \$ 724.50
	Driveway 7" Concrete Approach	6.90 x	= \$ 703.80	100.00 \$ 703.80
			Total: \$ 5,602.20	
478-0085-000	8911 W NATIONAL AVE	RBB West Allis LLC & c/o Magoos of West Allis	Commercial	250
	Street Concrete Reconstruction	69.15 x	= \$ 7,914.91	40.00 \$ 3,165.96
	Reduction Code Longside			
	Driveway 7" Concrete Approach	6.90 x	= \$ 1,021.20	100.00 \$ 1,021.20
			Total: \$ 4,187.16	
478-0319-000	2105 S 89 ST	Janel A Deprey	Residential	260
	Street Concrete Reconstruction	55.32 x	= \$ 6,638.40	40.00 \$ 2,655.36
	Reduction Code Longside			
	Driveway 7" Concrete Approach	6.90 x	= \$ 627.90	100.00 \$ 627.90
			Total: \$ 3,283.26	
478-0320-000	2115 S 89 ST	Spencer M Peck	Residential	270
	Street Concrete Reconstruction	55.32 x	= \$ 2,157.48	100.00 \$ 2,157.48
	Driveway 7" Concrete Approach	6.90 x	= \$ 762.45	100.00 \$ 762.45
			Total: \$ 2,919.93	





City of West Allis Engineering Department  
 Project Details P1628S

S. 89 St. from W. National Ave. to W. Lincoln Ave.

478-0321-000	2119 S 89 ST	John F Harders			Residential	280
	Street Concrete Reconstruction	55.32 x	39.00 Lin Ft	= \$	2,157.48	100.00 \$ 2,157.48
	Driveway 7" Concrete Approach	6.90 x	97.50 Sq Ft	= \$	672.75	100.00 \$ 672.75
					<u>Total:</u>	<u>\$ 2,830.23</u>
478-0322-000	2123 S 89 ST	Kristine A Werhand			Residential	290
	Street Concrete Reconstruction	55.32 x	45.00 Lin Ft	= \$	2,489.40	100.00 \$ 2,489.40
	Driveway 7" Concrete Approach	6.90 x	100.80 Sq Ft	= \$	695.52	100.00 \$ 695.52
					<u>Total:</u>	<u>\$ 3,184.92</u>
478-0323-000	2129 S 89 ST	Catherine M Anzia			Residential	300
	Street Concrete Reconstruction	55.32 x	45.00 Lin Ft	= \$	2,489.40	100.00 \$ 2,489.40
	Driveway 7" Concrete Approach	6.90 x	91.00 Sq Ft	= \$	627.90	100.00 \$ 627.90
					<u>Total:</u>	<u>\$ 3,117.30</u>
478-0324-000	2133 S 89 ST	David A Tuuri & Nicole M Tuuri			Residential	310
	Street Concrete Reconstruction	55.32 x	50.00 Lin Ft	= \$	2,766.00	100.00 \$ 2,766.00
	Driveway 7" Concrete Approach	6.90 x	97.50 Sq Ft	= \$	672.75	100.00 \$ 672.75
					<u>Total:</u>	<u>\$ 3,438.75</u>
478-0325-000	2139 S 89 ST	Robert A Bergles & Debra Bergles			Residential	320
	Street Concrete Reconstruction	55.32 x	50.00 Lin Ft	= \$	2,766.00	100.00 \$ 2,766.00
	Driveway 7" Concrete Approach	6.90 x	104.00 Sq Ft	= \$	717.60	100.00 \$ 717.60
					<u>Total:</u>	<u>\$ 3,483.60</u>
478-0326-000	2145 S 89 ST	Dennis L Maciejewski & Barbara D Maciejewski			Residential	330
	Street Concrete Reconstruction	55.32 x	50.00 Lin Ft	= \$	2,766.00	100.00 \$ 2,766.00
	Driveway 7" Concrete Approach	6.90 x	91.00 Sq Ft	= \$	627.90	100.00 \$ 627.90
					<u>Total:</u>	<u>\$ 3,393.90</u>



City of West Allis Engineering Department  
 Project Details P1628S

S. 89 St. from W. National Ave. to W. Lincoln Ave.

478-0327-000	2149 S 89 ST	Jamie R Gast & Debra L Gast	Residential	340
	Street Concrete Reconstruction	55.32 x 40.00 Lin Ft	= \$ 2,212.80	100.00 \$ 2,212.80
	Driveway 7" Concrete Approach	6.90 x 97.50 Sq Ft	= \$ 672.75	0.00 \$ 0.00
	Reduction Code 0-15 Years (Free)			
			Total:	\$ 2,212.80
478-0328-000	2155 S 89 ST	John L Miller	Residential	350
	Street Concrete Reconstruction	55.32 x 40.00 Lin Ft	= \$ 2,212.80	100.00 \$ 2,212.80
	Driveway 7" Concrete Approach	6.90 x 97.50 Sq Ft	= \$ 672.75	100.00 \$ 672.75
			Total:	\$ 2,885.55
478-0329-000	2161 S 89 ST	Neil J Adamec	Residential	360
	Street Concrete Reconstruction	55.32 x 80.00 Lin Ft	= \$ 4,425.60	100.00 \$ 4,425.60
	Driveway 7" Concrete Approach	6.90 x 97.50 Sq Ft	= \$ 672.75	100.00 \$ 672.75
			Total:	\$ 5,098.35
478-0330-000	2167 S 89 ST	Colleen M Barany & Allison J Weiss	Residential	370
	Street Concrete Reconstruction	55.32 x 39.00 Lin Ft	= \$ 2,157.48	100.00 \$ 2,157.48
	Driveway 7" Concrete Approach	6.90 x 84.50 Sq Ft	= \$ 583.05	100.00 \$ 583.05
			Total:	\$ 2,740.53
478-0331-000	2171 S 89 ST	Randall S Hierl & Gail A Hierl	Residential	380
	Street Concrete Reconstruction	55.32 x 41.00 Lin Ft	= \$ 2,268.12	100.00 \$ 2,268.12
	Driveway 7" Concrete Approach	6.90 x 84.50 Sq Ft	= \$ 583.05	100.00 \$ 583.05
			Total:	\$ 2,851.17
478-0332-000	2175-77 S 89 ST	Kirk B Remer & Troy C Dequaine	Residential	390
	Street Concrete Reconstruction	55.32 x 30.00 Lin Ft	= \$ 1,659.60	100.00 \$ 1,659.60
	Driveway 7" Concrete Approach	6.90 x 78.00 Sq Ft	= \$ 538.20	100.00 \$ 538.20
			Total:	\$ 2,197.80



City of West Allis Engineering Department  
Project Details P1628S

S. 89 St. from W. National Ave. to W. Lincoln Ave.

478-0333-000	2179 S 89 ST	Juana M Dorger & Chad N Dorger	Residential	400
	Street Concrete Reconstruction	55.32 x 30.00 Lin Ft	= \$ 1,659.60	100.00 \$ 1,659.60
			Total: \$ 1,659.60	
478-0334-000	2183 S 89 ST	Darren A Stasiak & Linda L Stasiak	Residential	410
	Street Concrete Reconstruction	55.32 x 30.00 Lin Ft	= \$ 1,659.60	100.00 \$ 1,659.60
			Total: \$ 1,659.60	
478-0335-000	2187 S 89 ST	William C Strom & Krista A Strom	Residential	420
	Street Concrete Reconstruction	55.32 x 41.40 Lin Ft	= \$ 2,290.25	100.00 \$ 2,290.25
			Total: \$ 2,290.25	
478-0384-000	2201-03 S 89 ST	Mark J Duerr	Residential	430
	Street Concrete Reconstruction	55.32 x 44.50 Lin Ft	= \$ 2,461.74	100.00 \$ 2,461.74
			Total: \$ 2,461.74	
478-0385-000	2207 S 89 ST	Wayne A Levra & Catherine M Levra	Residential	440
	Street Concrete Reconstruction	55.32 x 40.00 Lin Ft	= \$ 2,212.80	100.00 \$ 2,212.80
	Driveway 7" Concrete Approach	6.90 x 91.00 Sq Ft	= \$ 627.90	0.00 \$ 0.00
	Reduction Code 0-15 Years (Free)			
			Total: \$ 2,212.80	
478-0386-000	2213 S 89 ST	David J Roadt & Kathleen Roadt	Residential	450
	Street Concrete Reconstruction	55.32 x 40.00 Lin Ft	= \$ 2,212.80	100.00 \$ 2,212.80
	Driveway 7" Concrete Approach	6.90 x 84.50 Sq Ft	= \$ 583.05	100.00 \$ 583.05
			Total: \$ 2,795.85	
478-0387-000	2219 S 89 ST	David J Kochie & Heidi Kochie	Residential	460
	Street Concrete Reconstruction	55.32 x 51.40 Lin Ft	= \$ 2,843.45	100.00 \$ 2,843.45
	Driveway 7" Concrete Approach	6.90 x 91.00 Sq Ft	= \$ 627.90	100.00 \$ 627.90
			Total: \$ 3,471.35	



City of West Allis Engineering Department  
 Project Details P1628S

S. 89 St. from W. National Ave. to W. Lincoln Ave.

478-0388-000	2225 S 89 ST	Daniel W Wolf & Christine Wolf		Residential	470
	Street Concrete Reconstruction	55.32 x	50.00 Lin Ft	= \$ 2,766.00	100.00 \$ 2,766.00
	Driveway 7" Concrete Approach	6.90 x	97.50 Sq Ft	= \$ 672.75	100.00 \$ 672.75
				Total: \$	<u>3,438.75</u>
478-0389-000	2231-33 S 89 ST	Charles E Eckart & Burdette M Eckart		Residential	480
	Street Concrete Reconstruction	55.32 x	50.00 Lin Ft	= \$ 2,766.00	100.00 \$ 2,766.00
	Driveway 7" Concrete Approach	6.90 x	52.50 Sq Ft	= \$ 362.25	100.00 \$ 362.25
				Total: \$	<u>3,128.25</u>
478-0390-000	2239 S 89 ST	Monica L Ensley		Residential	490
	Street Concrete Reconstruction	55.32 x	50.00 Lin Ft	= \$ 2,766.00	100.00 \$ 2,766.00
	Driveway 7" Concrete Approach	6.90 x	49.00 Sq Ft	= \$ 338.10	0.00 \$ 0.00
				Total: \$	<u>2,766.00</u>
478-0391-000	8900 W LINCOLN AVE	James R & Linda Coakley Trust		Commercial	500
	Street Concrete Reconstruction	69.15 x	50.00 Lin Ft	= \$ 3,457.50	100.00 \$ 3,457.50
				Total: \$	<u>3,457.50</u>

**Property Type Summary**

5	Commercial
45	Residential



City of West Allis Engineering Department  
 Project Details P1628S

S. 89 St. from W. National Ave. to W. Lincoln Ave.

**Item Summary**

	Total Quantity	Gross Total	Net Total
<b>Driveway</b>			
7" Concrete Approach			
Commercial	442.50 Sq Ft	\$3,053.25	\$3,053.25
Residential	3,553.60 Sq Ft	\$24,519.84	\$19,001.22
		<u>\$27,573.09</u>	<u>\$22,054.47</u>
<b>Street</b>			
Concrete Reconstruction			
Commercial	511.49 Lin Ft	\$35,369.54	\$19,334.07
Residential	2,094.00 Lin Ft	\$115,840.08	\$107,874.00
		<u>\$151,209.62</u>	<u>\$127,208.07</u>
<b>Grand Totals</b>		<b>\$178,782.71</b>	<b>\$149,262.54</b>