



Peter C. Daniels, P.E.
City Engineer
Engineering Department
pdaniels@westalliswi.gov
414.302.8360

June 2, 2020

Honorable Mayor and Common Council
West Allis, Wisconsin

Dear Mayor and Council Members:

I herewith respectfully submit my report on the assessment of benefits for miscellaneous sidewalk repair, miscellaneous driveway repair and utility adjustments in:

Hwy 100 from the North City Limits to the South City Limits

as directed in Preliminary Resolution No. R-2020-0203, adopted on April 22, 2020.

This report consists of the following schedules attached hereto:

- Schedule A. - Preliminary Plans and Specifications;
- Schedule B. - Estimate of Entire Cost of Proposed Improvements;
- Schedule C. - Schedule of Proposed Assessments Against Each Parcel Affected.

The properties against which the assessments are proposed are benefited.

Respectfully submitted,

Peter C. Daniels, P.E.
City Engineer

/ns

Encs.

PROPOSED IMPROVEMENT OF

Hwy 100 from the North City Limits to the South City Limits

by miscellaneous sidewalk repair, miscellaneous driveway repair and utility adjustments

SCHEDULE "A"

Preliminary Plans & Specifications Attached

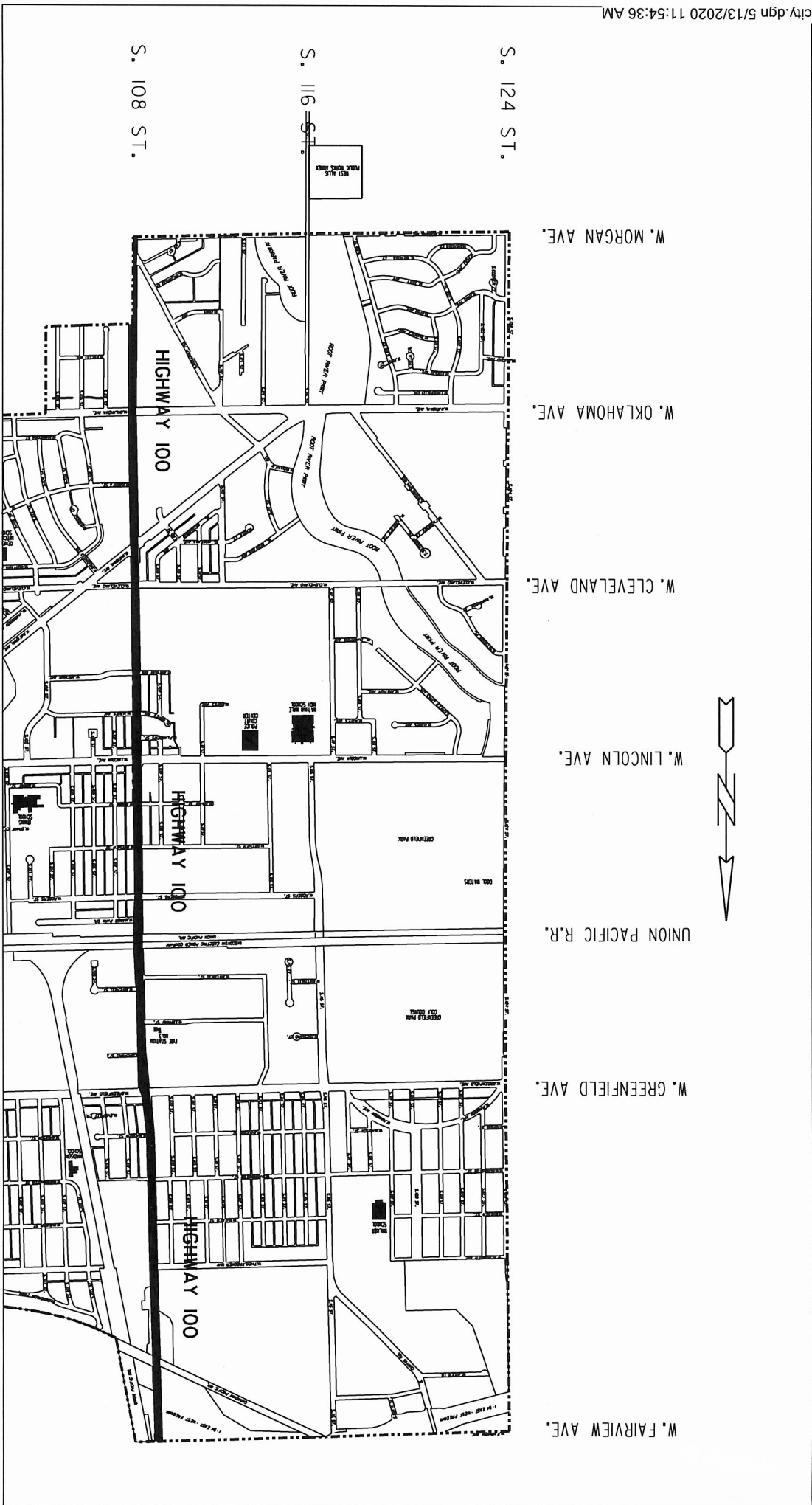
SCHEDULE "B"

Estimate of the Entire Cost

\$110,000

SCHEDULE "C"

Schedule of Proposed Assessments
Against Each Parcel Affected



W. MORGAN AVE.
 W. OKLAHOMA AVE.
 W. CLEVELAND AVE.
 W. LINCOLN AVE.
 UNION PACIFIC R.R.
 W. GREENFIELD AVE.
 W. FAIRVIEW AVE.

S. 124 ST.
 S. 116 ST.
 S. 108 ST.

HIGHWAY 100

HIGHWAY 100

HIGHWAY 100





Peter C. Daniels, P.E.
City Engineer
Engineering Department
pdaniels@westalliswi.gov
414.302.8360

June 2, 2020

Board of Public Works
West Allis City Hall
West Allis, Wisconsin

Dear Board Members:

I am herewith submitting preliminary plans and an estimate of costs for the miscellaneous sidewalk repair, miscellaneous driveway repair and utility adjustments in:

Hwy 100 from the North City Limits to the South City Limits

Estimated Construction Cost:	\$ 100,000
Contingency:	10,000
TOTAL:	\$ 110,000

Sincerely,

Peter C. Daniels, P.E.
City Engineer

/ns

ASSESSMENT REPORT FOR COUNCIL

HEARING DATE: June 2, 2020

LOCATION

DESCRIPTION: Hwy 100 from the North City Limits to the South City Limits

ACCOUNT NO.: P2040S

INTEREST RATE: 4.0%

2020 ASSESSMENT RATES

Cost

Sidewalk

5" Concrete Sidewalk, per sq. ft.	\$6.78
7" Concrete Sidewalk, per sq. ft.	\$7.77

The properties against which the assessments are proposed are benefited.



City of West Allis Engineering Department
 Project Details P2040S
 Hwy 100 Sidewalk Repair

444-9001-000	1136-1138 S 108 ST	Bustos Asset Management LLC		Commercial	60
	Sidewalk 5" Concrete Remove & Replace	6.78 x 49.50 Sq Ft	= \$	335.61 100.00 \$	335.61
	Reduction Code Heaved				
	Sidewalk 5" Concrete Remove & Replace	6.78 x 25.00 Sq Ft	= \$	169.50 100.00 \$	169.50
	Reduction Code Heaved				
				Total: \$	505.11
445-0715-002	1300 S 109 ST	Sch Dist of Wa Wm Et Al		Exempt Local	70
	Sidewalk 5" Concrete Remove & Replace	6.78 x 101.50 Sq Ft	= \$	688.17 100.00 \$	688.17
	Reduction Code Drainage Problem				
	Exempt Property Charged as Residential				
				Total: \$	688.17
444-0485-001	1306-1330 S 108 ST	1330 LLC		Commercial	80
	Sidewalk 5" Concrete Remove & Replace	6.78 x 24.50 Sq Ft	= \$	166.11 100.00 \$	166.11
	Reduction Code Heaved				
				Total: \$	166.11
444-0484-000	1350 S 108 ST	1350 LLC & c/o 1350 LLC		Commercial	90
	Sidewalk 5" Concrete Remove & Replace	6.78 x 101.00 Sq Ft	= \$	684.78 100.00 \$	684.78
	Reduction Code Heaved				
				Total: \$	684.78
449-9983-002	10725 W GREENFIELD AVE	Alpha-K-Holdings LLC & c/o Walgreen Co		Commercial	100
	Sidewalk 5" Concrete Remove & Replace	6.78 x 25.50 Sq Ft	= \$	172.89 100.00 \$	172.89
	Reduction Code Heaved				
				Total: \$	172.89
448-9999-004	1427-1431 S 108 ST	SL 100 LLC		Commercial	110
	Sidewalk 5" Concrete Remove & Replace	6.78 x 28.50 Sq Ft	= \$	193.23 100.00 \$	193.23
	Reduction Code Heaved				
				Total: \$	193.23



City of West Allis Engineering Department
 Project Details P2040S
 Hwy 100 Sidewalk Repair

448-9999-010	1451 S 108 ST	Carpetland USA 1451 LLC	Commercial	120
	Sidewalk 7" Concrete Remove & Replace	7.77 x 53.50 Sq Ft	= \$ 415.69	100.00 \$ 415.69
	Reduction Code Cracked/Spalled			
	Sidewalk Saw	0.00 x 5.00 Lin Ft	= \$ 0.00	100.00 \$ 0.00
			Total: \$	415.69
449-0032-000	1500 S 108 ST	BV West Allis LLC & c/o Boulder Venture LLC	Commercial	130
	Sidewalk 5" Concrete Remove & Replace	6.78 x 25.50 Sq Ft	= \$ 172.89	100.00 \$ 172.89
	Reduction Code Heaved			
			Total: \$	172.89
449-0034-000	1550 S 108 ST	BV West Allis LLC & c/o McDonalds Corp	Commercial	140
	Sidewalk 5" Concrete Remove & Replace	6.78 x 50.00 Sq Ft	= \$ 339.00	100.00 \$ 339.00
	Reduction Code Drainage Problem			
			Total: \$	339.00
448-9998-002	1551 S 108 ST	Kim M Ellis	Commercial	150
	Sidewalk 7" Concrete Remove & Replace	7.77 x 24.50 Sq Ft	= \$ 190.36	100.00 \$ 190.36
	Reduction Code Drainage Problem			
			Total: \$	190.36
000-0000-001	At 1551 S. 108 St.	City of West Allis	Exempt Local	151
	Sidewalk 7" Concrete Remove & Replace	7.77 x 60.00 Sq Ft	= \$ 466.20	0.00 \$ 0.00
	Reduction Code Cracked/Spalled			
	Exempt Property Charged as Residential			
	Detectable Warning Field Install	0.00 x 1.00 Each	= \$ 0.00	100.00 \$ 0.00
	Exempt Property Charged as Residential			
			Total: \$	0.00



City of West Allis Engineering Department
 Project Details P2040S
 Hwy 100 Sidewalk Repair

449-9981-014	1616 S 108 ST	Megal Development Corp	Commercial	160
	Sidewalk 7" Concrete Remove & Replace	7.77 x 27.50 Sq Ft	213.67 100.00 \$	213.67
	Reduction Code Cracked/Spalled			
			Total: \$	213.67
448-9979-007	1657-1673 S 108 ST	West Allis Real Estate Holding, LLC	Commercial	170
	Sidewalk 7" Concrete Remove & Replace	7.77 x 75.00 Sq Ft	582.75 100.00 \$	582.75
	Reduction Code Cracked/Spalled			
000-0000-002	At 1657 S. 108 St.	City of West Allis	Exempt Local	171
	Sidewalk 7" Concrete Remove & Replace	7.77 x 80.00 Sq Ft	621.60 0.00 \$	0.00
	Reduction Code Cracked/Spalled			
	Exempt Property Charged as Residential			
	Detectable Warning Field Install	0.00 x 1.00 Each	0.00 100.00 \$	0.00
	Exempt Property Charged as Residential			
			Total: \$	0.00
449-9976-000	1800 Block S 100 ST	WEPCO	Exempt Other	180
	Sidewalk 7" Concrete Remove & Replace	7.77 x 96.50 Sq Ft	749.80 100.00 \$	749.80
	Reduction Code Cracked/Spalled			
	Exempt Property Charged as Residential			
481-9997-004	10915 W ROGERS ST	2 DPJ LLC	Commercial	190
	Sidewalk 5" Concrete Remove & Replace	6.78 x 30.00 Sq Ft	203.40 100.00 \$	203.40
	Reduction Code Heaved			
			Total: \$	203.40



City of West Allis Engineering Department
 Project Details P2040S
 Hwy 100 Sidewalk Repair

481-9996-000	2021 S 108 ST	Krueger Holdings of Wisconsin LLC	Commercial	200
	Sidewalk 5" Concrete Remove & Replace	6.78 x 25.00 Sq Ft	169.50	100.00 \$ 169.50
	Reduction Code Heaved	=		
			<u>Total: \$</u>	<u>169.50</u>
480-0103-000	2042 S 108 ST	Ying Yang & Long T Yang	Residential	210
	Sidewalk 5" Concrete Remove & Replace	6.78 x 88.00 Sq Ft	596.64	100.00 \$ 596.64
	Reduction Code Heaved	=		
			<u>Total: \$</u>	<u>596.64</u>
481-9995-017	2055-2071 S 108 ST & 10822 W BECHER ST	Ase Resource Management LLC	Commercial	220
	Sidewalk 5" Concrete Remove & Replace	6.78 x 120.00 Sq Ft	813.60	100.00 \$ 813.60
	Reduction Code Heaved	=		
			<u>Total: \$</u>	<u>813.60</u>
481-0001-000	2103 S 108 ST	Randal J Schwartz	Residential	230
	Sidewalk 5" Concrete Remove & Replace	6.78 x 50.00 Sq Ft	339.00	100.00 \$ 339.00
	Reduction Code Heaved	=		
			<u>Total: \$</u>	<u>339.00</u>
481-0005-001	2129 S 108 ST	Lutz Land Management LLC	Commercial	240
	Sidewalk 5" Concrete Remove & Replace	6.78 x 150.00 Sq Ft	1,017.00	100.00 \$ 1,017.00
	Reduction Code Drainage Problem	=		
			<u>Total: \$</u>	<u>339.00</u>
481-0007-001	2137 S 108 ST	Lutz Land Management LLC	Commercial	250
	Sidewalk 5" Concrete Remove & Replace	6.78 x 51.50 Sq Ft	349.17	100.00 \$ 349.17
	Reduction Code Heaved	=		
			<u>Total: \$</u>	<u>1,017.00</u>
			<u>Total: \$</u>	<u>349.17</u>



City of West Allis Engineering Department
 Project Details P2040S
 Hwy 100 Sidewalk Repair

481-0010-001	2157 S 108 ST	Jeffrey T Anderson & William T Heberer	Commercial	260
	Sidewalk 5" Concrete Remove & Replace	6.78 x 52.00 Sq Ft	352.56 100.00 \$	352.56
	Reduction Code Heaved			
			Total: \$	352.56
481-0012-001	2165 S 108 ST	Jeffrey T Anderson & William T Heberer	Commercial	270
	Sidewalk 5" Concrete Remove & Replace	6.78 x 72.50 Sq Ft	491.55 100.00 \$	491.55
	Reduction Code Cracked/Spalled			
			Total: \$	491.55
481-0014-001	10826 W GRANT ST	RFK Housing LLC	Commercial	280
	Sidewalk 5" Concrete Remove & Replace	6.78 x 52.00 Sq Ft	352.56 100.00 \$	352.56
	Reduction Code Heaved			
			Total: \$	352.56
480-2001-000	2200-2210 S 108 ST	PGA Properties LLC	Commercial	290
	Sidewalk 5" Concrete Remove & Replace	6.78 x 100.00 Sq Ft	678.00 100.00 \$	678.00
	Reduction Code Drainage Problem			
	Sidewalk 7" Concrete Remove & Replace	7.77 x 26.50 Sq Ft	205.91 100.00 \$	205.91
	Reduction Code Cracked/Spalled			
			Total: \$	883.91
481-0102-001	2203 S 108 ST	K & A Of Wisconsin LLC	Commercial	300
	Sidewalk 5" Concrete Remove & Replace	6.78 x 45.00 Sq Ft	305.10 100.00 \$	305.10
	Reduction Code Heaved			
			Total: \$	305.10
480-0276-000	2234 S 108 ST	Pete Stefaniak LLC	Commercial	310
	Sidewalk 5" Concrete Remove & Replace	6.78 x 25.00 Sq Ft	169.50 100.00 \$	169.50
	Reduction Code Heaved			
			Total: \$	169.50



City of West Allis Engineering Department
 Project Details P2040S
 Hwy 100 Sidewalk Repair

481-9990-001	2225-2267 S 108 ST	Lincoln Plaza B LLC	6.78 x	26.50 Sq Ft	= \$	Commercial	320
	Sidewalk 5" Concrete Remove & Replace					179.67	100.00 \$ 179.67
	Reduction Code Heaved						
	Sidewalk 5" Concrete Remove & Replace		6.78 x	96.50 Sq Ft	= \$	654.27	100.00 \$ 654.27
	Reduction Code Heaved						
						Total: \$	833.94
480-0275-001	2248 S 108 ST	EE Acquisitions LLC	7.77 x	86.00 Sq Ft	= \$	Commercial	330
	Sidewalk 7" Concrete Remove & Replace					668.22	100.00 \$ 668.22
	Reduction Code Cracked/Spalled						
						Total: \$	668.22
485-0001-002	2300 S 108 ST	West Allis Property Owner	7.77 x	100.50 Sq Ft	= \$	Commercial	340
	Sidewalk 7" Concrete Remove & Replace					780.88	100.00 \$ 780.88
	Reduction Code Cracked/Spalled						
						Total: \$	780.88
484-0001-000	2301 S 108 ST & 10809 W LINCOLN AVE	360 Holdings II, LLC	7.77 x	28.00 Sq Ft	= \$	Commercial	350
	Sidewalk 7" Concrete Remove & Replace					217.56	100.00 \$ 217.56
	Reduction Code Cracked/Spalled						
						Total: \$	217.56
484-0002-001	2311 S 108 ST	Blue Water Investment Properties LLC	7.77 x	82.50 Sq Ft	= \$	Exempt Other	360
	Sidewalk 7" Concrete Remove & Replace					641.02	100.00 \$ 641.02
	Reduction Code Cracked/Spalled						
	Exempt Property Charged as Residential						
	Sidewalk 7" Concrete Remove & Replace		7.77 x	32.50 Sq Ft	= \$	252.52	100.00 \$ 252.52
	Reduction Code Cracked/Spalled						
	Exempt Property Charged as Residential						
						Total: \$	893.54



City of West Allis Engineering Department
 Project Details P2040S
 Hwy 100 Sidewalk Repair

485-0024-001	2330 S 108 ST	West Allis Property Owner	Residential	370
	Sidewalk 5" Concrete Remove & Replace	6.78 x 31.00 Sq Ft	210.18	100.00 \$ 210.18
	Reduction Code Heaved			
			Total: \$	210.18
484-0005-000	2331 S 108 ST	Start7 Development LLC	Commercial	380
	Sidewalk 5" Concrete Remove & Replace	6.78 x 25.50 Sq Ft	172.89	100.00 \$ 172.89
	Reduction Code Heaved			
			Total: \$	172.89
485-0016-004	2362 S 108 ST	James Taylor	Commercial	390
	Sidewalk 7" Concrete Remove & Replace	7.77 x 25.00 Sq Ft	194.25	100.00 \$ 194.25
	Reduction Code Cracked/Spalled			
	Sidewalk 7" Concrete Remove & Replace	7.77 x 31.00 Sq Ft	240.87	100.00 \$ 240.87
	Reduction Code Cracked/Spalled			
	Sidewalk Saw	0.00 x 5.00 Lin Ft	0.00	100.00 \$ 0.00
			Total: \$	435.12
484-0025-000	2425 S 108 ST	David Gerspach & Cara Gerspach	Residential	400
	Sidewalk 5" Concrete Remove & Replace	6.78 x 26.00 Sq Ft	176.28	100.00 \$ 176.28
	Reduction Code Heaved			
			Total: \$	176.28
484-0027-000	2437 S 108 ST	Wisconsin District of the Wesleyan Church	Residential	410
	Sidewalk 5" Concrete Remove & Replace	6.78 x 76.00 Sq Ft	515.28	100.00 \$ 515.28
	Reduction Code Heaved			
			Total: \$	515.28



City of West Allis Engineering Department
 Project Details P2040S
 Hwy 100 Sidewalk Repair

484-0030-001	2455-2465 S 108 ST	Wisconsin District of Wesleyan Church	Exempt Other	420
Sidewalk 5" Concrete Remove & Replace	Reduction Code Heaved	6.78 x 77.00 Sq Ft	522.06	100.00 \$ 522.06
	Exempt Property Charged as Residential			
Sidewalk 5" Concrete Remove & Replace	Reduction Code Heaved	6.78 x 74.00 Sq Ft	501.72	100.00 \$ 501.72
	Exempt Property Charged as Residential			
Sidewalk 5" Concrete Remove & Replace	Reduction Code Heaved	6.78 x 50.00 Sq Ft	339.00	100.00 \$ 339.00
	Exempt Property Charged as Residential			
			Total:	\$ 1,362.78
485-9990-015	2600 S 108 ST	Dayton-Hudson Corp	Commercial	430
Sidewalk 5" Concrete Remove & Replace	Reduction Code Heaved	6.78 x 25.50 Sq Ft	172.89	100.00 \$ 172.89
	Exempt Property Charged as Residential			
Sidewalk 7" Concrete Remove & Replace	Reduction Code Cracked/Spalled	7.77 x 25.50 Sq Ft	198.13	100.00 \$ 198.13
			Total:	\$ 371.02
485-9990-014	2626 S 108 ST	Taylor Family Trust	Commercial	440
Sidewalk 7" Concrete Remove & Replace	Reduction Code Cracked/Spalled	7.77 x 30.00 Sq Ft	233.10	100.00 \$ 233.10
			Total:	\$ 233.10
485-9990-009	2678 S 108 ST	Cleveland and 108, LLC	Commercial	450
Sidewalk 5" Concrete Remove & Replace	Reduction Code Heaved	6.78 x 77.00 Sq Ft	522.06	100.00 \$ 522.06
			Total:	\$ 522.06



City of West Allis Engineering Department
 Project Details P2040S
 Hwy 100 Sidewalk Repair

000-0000-003	At 2678 S. 108 St.	City of West Allis				Exempt Local	451
	Sidewalk 7" Concrete Remove & Replace	7.77 x	140.00 Sq Ft	= \$	1,087.80	0.00 \$	0.00
	Reduction Code Cracked/Spalled						
	Exempt Property Charged as Residential						
	Detectable Warning Field Install	0.00 x	1.00 Each	= \$	0.00	100.00 \$	0.00
	Exempt Property Charged as Residential						
					Total: \$		0.00
000-0000-004	At 10730 W. National Ave.	City of West Allis				Exempt Local	452
	Sidewalk 7" Concrete Remove & Replace	7.77 x	165.00 Sq Ft	= \$	1,282.05	0.00 \$	0.00
	Reduction Code Cracked/Spalled						
	Exempt Property Charged as Residential						
	Detectable Warning Field Install	0.00 x	3.00 Each	= \$	0.00	100.00 \$	0.00
	Exempt Property Charged as Residential						
					Total: \$		0.00
000-0000-005	At 10804 W. National Ave.	City of West Allis				Exempt Local	453
	Sidewalk 7" Concrete Remove & Replace	7.77 x	125.00 Sq Ft	= \$	971.25	0.00 \$	0.00
	Reduction Code Cracked/Spalled						
	Exempt Property Charged as Residential						
	Detectable Warning Field Install	0.00 x	3.00 Each	= \$	0.00	100.00 \$	0.00
	Exempt Property Charged as Residential						
					Total: \$		0.00
519-9995-002	10757 W NATIONAL AVE	West Allis Goodyear, LLC				Commercial	460
	Sidewalk 5" Concrete Remove & Replace	6.78 x	25.00 Sq Ft	= \$	169.50	100.00 \$	169.50
	Reduction Code Cracked/Spalled						
					Total: \$		169.50
520-9961-001	2825 S 108 ST	Alybouer LLC, etal & c/o Alybouer, LLC				Commercial	470
	Sidewalk 5" Concrete Remove & Replace	6.78 x	26.50 Sq Ft	= \$	179.67	100.00 \$	179.67
	Reduction Code Cracked/Spalled						
					Total: \$		179.67



City of West Allis Engineering Department
 Project Details P2040S
 Hwy 100 Sidewalk Repair

Property ID	Address	City of West Allis	Area	Exempt Local	471
000-0000-006	At 2825 S. 108 St.	7.77 x 30.00 Sq Ft	= \$	233.10	0.00
	Sidewalk 7" Concrete Remove & Replace				0.00
	Reduction Code Cracked/Spalled				
	Exempt Property Charged as Residential				
	Detectable Warning Field Install	0.00 x 1.00 Each	= \$	0.00	100.00
	Exempt Property Charged as Residential				0.00
				Total: \$	0.00
520-9965-012	2865-2871 S 108 ST	BWGS LLC & c/o WHG West Allis LLC		Commercial	480
	Sidewalk 5" Concrete Remove & Replace	6.78 x 26.00 Sq Ft	= \$	176.28	100.00
	Reduction Code Cracked/Spalled				176.28
				Total: \$	176.28
519-9995-003	2812-2814 S 108 ST	LP West Allis LLC		Commercial	490
	Sidewalk 5" Concrete Remove & Replace	6.78 x 25.00 Sq Ft	= \$	169.50	100.00
	Reduction Code Cracked/Spalled				169.50
				Total: \$	169.50
519-9995-011	2830 S 108 ST	Dragon China Inc		Commercial	500
	Sidewalk 5" Concrete Remove & Replace	6.78 x 25.00 Sq Ft	= \$	169.50	100.00
	Reduction Code Heaved				169.50
				Total: \$	169.50
519-0001-016	2860 S 108 ST	Michael P Slattery & Diane Slattery		Commercial	510
	Sidewalk 7" Concrete Remove & Replace	7.77 x 106.50 Sq Ft	= \$	827.50	100.00
	Reduction Code Cracked/Spalled				827.50
				Total: \$	827.50
520-1002-000	2923-2939 S 108 ST	Shoppes on 100-WA WI LLC, etal & c/o Shoppe		Commercial	520
	Sidewalk 5" Concrete Remove & Replace	6.78 x 50.00 Sq Ft	= \$	339.00	100.00
	Reduction Code Heaved				339.00
				Total: \$	339.00



City of West Allis Engineering Department
 Project Details P2040S
 Hwy 100 Sidewalk Repair

Property ID	Description	Church Calvary	Methodist	Sq Ft	Exempt Other	Value
524-0014-000	3177 S 107 ST	6.78	x	25.00	100.00	\$ 169.50
	Sidewalk 5" Concrete Remove & Replace					
	Reduction Code Heaved					
	Exempt Property Charged as Residential					
						Total: \$ 169.50
523-9992-004	3185 S 108 ST	6.78	x	25.00	100.00	\$ 169.50
	Sidewalk 5" Concrete Remove & Replace					
	Reduction Code Cracked/Spalled					
						Total: \$ 169.50
524-9998-001	3226-3236 S 108 ST	6.78	x	50.50	100.00	\$ 342.39
	Sidewalk 5" Concrete Remove & Replace					
	Reduction Code Heaved					
524-9998-001	3226-3236 S 108 ST	6.78	x	30.00	100.00	\$ 203.40
	Sidewalk 5" Concrete Remove & Replace					
	Reduction Code Heaved					
						Total: \$ 545.79

Property Type Summary

44	Commercial
1	Manufacturing
16	Residential



City of West Allis Engineering Department
 Project Details P2040S
 Hwy 100 Sidewalk Repair

Item Summary

	Total Quantity		Gross Total	Net Total
Detectable Warning Field				
Install				
Residential	10.00	Each	\$0.00	\$0.00
			<u>\$0.00</u>	<u>\$0.00</u>
Sidewalk				
5" Concrete Remove & Replace				
Commercial	1,814.50	Sq Ft	\$12,302.31	\$12,302.31
Manufacturing	24.00	Sq Ft	\$162.72	\$162.72
Residential	598.50	Sq Ft	\$4,057.83	\$4,057.83
7" Concrete Remove & Replace				
Commercial	643.50	Sq Ft	\$4,999.97	\$4,999.97
Residential	811.50	Sq Ft	\$6,305.34	\$1,643.34
Saw				
Commercial	15.00	Lin Ft	\$0.00	\$0.00
			<u>\$0.00</u>	<u>\$0.00</u>
			<u>\$27,828.17</u>	<u>\$23,166.17</u>
Grand Totals			\$27,828.17	\$23,166.17

EXAMPLE: Residential Special Assessment for Sidewalk

Area: Hwy 100 from the North City Limits to the South City Limits

Billed Amount = \$150.00

A special assessment of this amount would be eligible for payment by five (5) year, or one (1) year installment plan with interest at 4.0% per year. Payment of the entire assessment without interest may be made prior to the due date noted on the billing -- thirty (30) days.

Example of a five (5) year plan: *(Based on a full year of interest)*

\$150.00 Total Special Assessment:

<u>Year No.</u>	<u>Principal Amt.</u>	<u>Interest Amt.</u>	<u>Total Payment</u>
1st year	\$30.00	\$6.00 **	\$36.00
2nd year	\$30.00	\$4.80	\$34.80
3rd year	\$30.00	\$3.60	\$33.60
4th year	\$30.00	\$2.40	\$32.40
5th year	\$30.00	\$1.20	\$31.20

** Interest is based on the descending principal balance.

EXAMPLE: Residential Special Assessment for Sidewalk

Area: Hwy 100 from the North City Limits to the South City Limits

Billed Amount = \$250.01

A special assessment of this amount would be eligible for payment by a ten (10) year, five (5) year, or one (1) year installment plan with interest at 4.0% per year. Payment of the entire assessment without interest may be made prior to the due date noted on the billing -- thirty (30) days.

Example of a ten (10) year plan: *(Based on a full year of interest)*

\$250.01 Total Special Assessment:

<u>Year No.</u>	<u>Principal Amt.</u>	<u>Interest Amt.</u>	<u>Total Payment</u>
1st year	\$25.00	\$10.00 **	\$35.00
2nd year	\$25.00	\$9.00	\$34.00
3rd year	\$25.00	\$8.00	\$33.00
4th year	\$25.00	\$7.00	\$32.00
5th year	\$25.00	\$6.00	\$31.00
6th year	\$25.00	\$5.00	\$30.00
7th year	\$25.00	\$4.00	\$29.00
8th year	\$25.00	\$3.00	\$28.00
9th year	\$25.00	\$2.00	\$27.00
10th year	\$25.00	\$1.00	\$26.00

Example of a five (5) year plan: *(Based on a full year of interest)*

\$250.01 Total Special Assessment:

<u>Year No.</u>	<u>Principal Amt.</u>	<u>Interest Amt.</u>	<u>Total Payment</u>
1st year	\$50.00	\$10.00 **	\$60.00
2nd year	\$50.00	\$8.00	\$58.00
3rd year	\$50.00	\$6.00	\$56.00
4th year	\$50.00	\$4.00	\$54.00
5th year	\$50.00	\$2.00	\$52.00

** Interest is based on the descending principal balance.