



ENGINEERING DEPARTMENT

Michael G. Lewis

Director of Public Works / City Engineer

414/302-8360

414/302-8366 (Fax)

City Hall

7525 West Greenfield Avenue

West Allis, Wisconsin 53214

www.westalliswi.gov

mlewis@westalliswi.gov

December 17, 2013

Mayor Dan Devine and Members of the Common Council
7525 West Greenfield Avenue
West Allis, WI 53214

Honorable Mayor and Council Members:

I have attached the latest concept proposed by WisDOT for new traffic signals at the intersection of Lincoln Ave. / Beloit Rd. / 68th Street. This will require prohibiting parking at the intersection though. It does appear that the businesses on the north side of Lincoln Ave. have adequate off street parking already and are not concerned about the loss of on street parking.

On the south side of Lincoln Ave. Mr. Balistreri, who owns the building at 6733-35 W. Lincoln Avenue, has conceded that if we build 6 to 8 new parking spaces in front of his property, he will be content as well. It is estimated that this new parking area would cost under \$30,000 and would be funded entirely with City Capital Improvement Program Funds since WisDOT is not allowed to use state funds for parking areas.

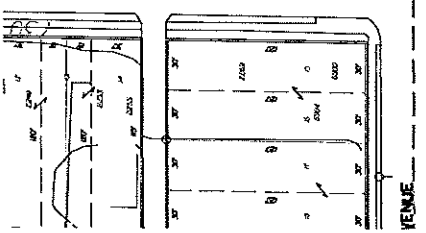
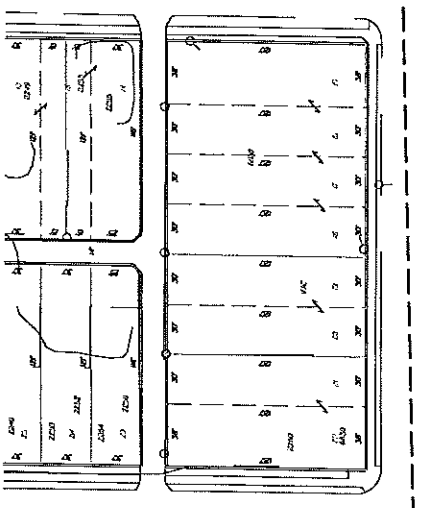
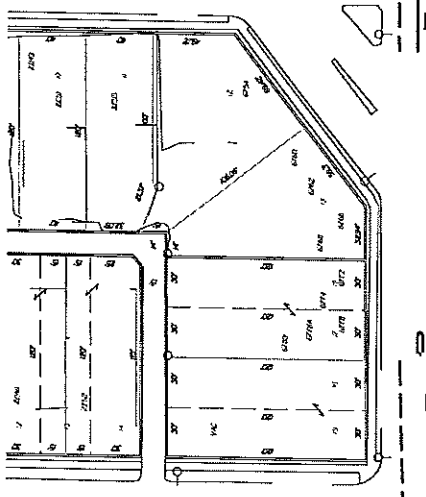
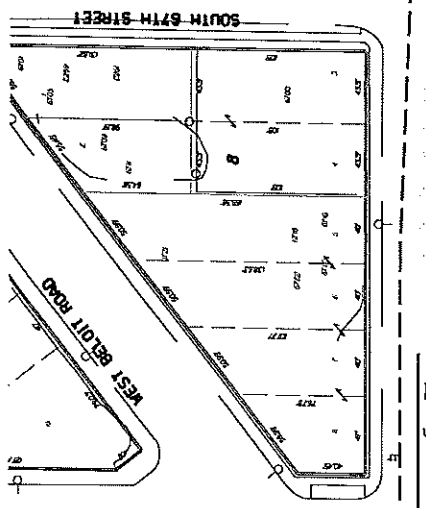
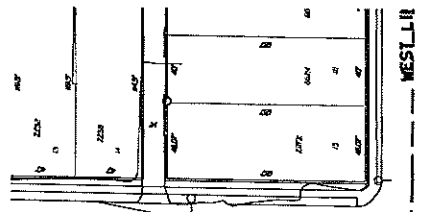
We are therefore requesting permission to construct a parking area in front of 6733-35 W. Lincoln Ave. in order to accommodate the new traffic signal system (valued at \$150,000) which will increase safety by permanently allowing left turns at the intersection. The new traffic signal will be funded entirely by WisDOT in order to accommodate their detour needs in the short term.



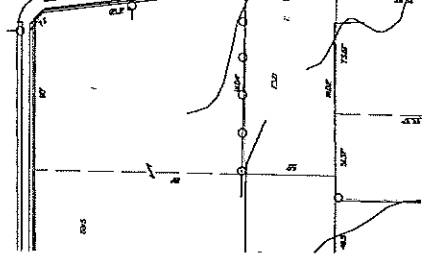
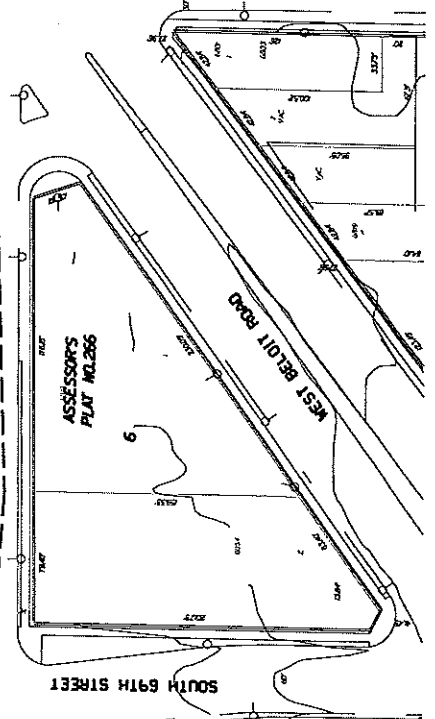
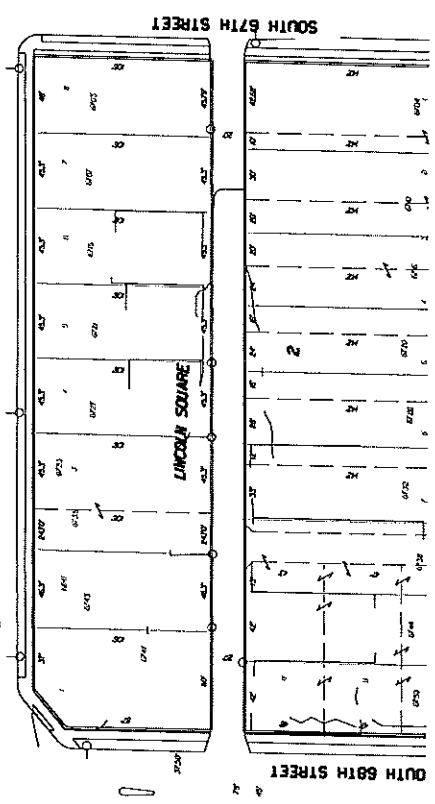
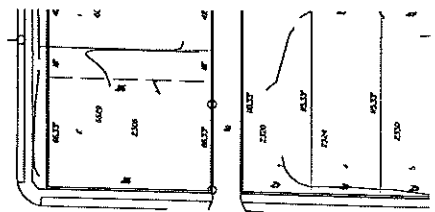
After the traffic signal is installed, the Council will need to pass a new ordinance prohibiting all parking on both sides of Lincoln Ave. from S. 67th Street to S. 69th Street with the exception of 6 to 8 new parking spots in front of 6733-35 W. Lincoln Avenue.

Sincerely,

Peter C. Daniels, P.E.
Principal Engineer



WEST II
WEST I
WEST III
WEST IV
WEST V
WEST VI
WEST VII
WEST VIII
WEST IX
WEST X
WEST XI
WEST XII
WEST XIII
WEST XIV
WEST XV
WEST XVI
WEST XVII
WEST XVIII
WEST XIX
WEST XX
WEST XXI
WEST XXII
WEST XXIII
WEST XXIV
WEST XXV
WEST XXVI
WEST XXVII
WEST XXVIII
WEST XXIX
WEST XXX
WEST XXXI
WEST XXXII
WEST XXXIII
WEST XXXIV
WEST XXXV
WEST XXXVI
WEST XXXVII
WEST XXXVIII
WEST XXXIX
WEST XL
WEST XLI
WEST XLII
WEST XLIII
WEST XLIV
WEST XLV
WEST XLVI
WEST XLVII
WEST XLVIII
WEST XLIX
WEST L
WEST LI
WEST LII
WEST LIII
WEST LIV
WEST LV
WEST LVI
WEST LVII
WEST LVIII
WEST LIX
WEST LX
WEST LXI
WEST LXII
WEST LXIII
WEST LXIV
WEST LXV
WEST LXVI
WEST LXVII
WEST LXVIII
WEST LXIX
WEST LXX
WEST LXXI
WEST LXXII
WEST LXXIII
WEST LXXIV
WEST LXXV
WEST LXXVI
WEST LXXVII
WEST LXXVIII
WEST LXXIX
WEST LXXX
WEST LXXXI
WEST LXXXII
WEST LXXXIII
WEST LXXXIV
WEST LXXXV
WEST LXXXVI
WEST LXXXVII
WEST LXXXVIII
WEST LXXXIX
WEST XL



ASSESSORS
PLAT NO. 266

SOUTH 69TH STREET

SOUTH 67TH STREET

SOUTH 68TH STREET

LINCOLN SQUARE

WEST BEIT ROAD

SOUTH 69TH STREET