

40.



# City of West Allis Matter Summary

7525 W. Greenfield Ave.  
West Allis, WI 53214

File Number	Title	Status
-------------	-------	--------

R-2010-0025      Resolution      Introduced

Resolution to confirm and adopt the report of the Director of Public Works/City Engineer containing the schedule of proposed assessments for improvement of various alleys in the City of West Allis by removal and reconstruction of the concrete alley pavement, storm sewer, storm sewer relay and storm underdrain.

Introduced: 2/2/2010

Controlling Body: Public Works Committee

Sponsor(s): Public Works Committee

### COMMITTEE RECOMMENDATION

*Adopt*

ACTION DATE:	MOVER	SECONDER		AYE	NO	PRESENT	EXCUSED
<u>2/2/2010</u>			Barczak	✓			
			Czaplewski	✓			
			Kopplin				
			Lajsic				
			Narlock				
			Reinke				
	✓		Roadt	✓			
			Sengstock	✓			
			Vitale				
		✓	Weigel	✓			
			TOTAL	<u>5</u>	<u>-</u>		

### SIGNATURE OF COMMITTEE MEMBER

*[Signature]*

Chair

Vice-Chair

Member

### COMMON COUNCIL ACTION

**ADOPT**

ACTION DATE:	MOVER	SECONDER		AYE	NO	PRESENT	EXCUSED
<u>FEB 02 2010</u>	✓		Barczak	✓			
			Czaplewski	✓			
			Kopplin	✓			
			Lajsic	✓			
			Narlock	✓			
		✓	Reinke	✓			
			Roadt	✓			
			Sengstock	✓			
			Vitale	✓			
			Weigel	✓			
			TOTAL	<u>10</u>	<u>-</u>		



# City of West Allis

7525 W. Greenfield Ave.  
West Allis, WI 53214

## Resolution

**File Number: R-2010-0025**

**Final Action:**

FEB 02 2010

**Sponsor(s):** Public Works Committee

Resolution to confirm and adopt the report of the Director of Public Works/City Engineer containing the schedule of proposed assessments for improvement of various alleys in the City of West Allis by removal and reconstruction of the concrete alley pavement, storm sewer, storm sewer relay and storm underdrain.

WHEREAS, The Director of Public Works/City Engineer, pursuant to Preliminary Resolution No. R-2009-0226, adopted on October 6, 2009, prepared and submitted his report as provided in sec. 66.0703(5) of the Wisconsin Statutes, for the improvement of the alleys as hereinafter described; and,

WHEREAS, The City Clerk/Treasurer gave due notice that such report was open for inspection at his office and also at the office of the Director of Public Works/City Engineer, and that all persons interested could appear before the Common Council and be heard concerning the matters contained in the Preliminary Resolution and Report; and,

WHEREAS, The Common Council met pursuant to such notice, at the time and place therein named; and having considered all statements and communications concerning the proposed improvements, relating to the matters contained in the Director of Public Works/City Engineer's report, including the schedule of proposed assessments, the Common Council makes no change in said report.

NOW, THEREFORE, BE IT RESOLVED By the Common Council of the City of West Allis:

1. The report of the Director of Public Works/City Engineer, including the schedule of the proposed assessments, for the improvement of

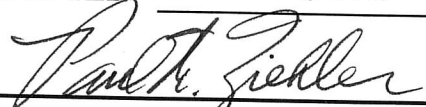
- North/South Alley between S. 61 St., S. 62 St., 226 ft. north of W. Mineral St. & W. Mineral St.
- North/South Alley between S. 57 St., S. 58 St., W. Mineral St. & W. Washington St.
- North/South Alley between S. 61 St., S. 62 St., W. Mineral St. & W. Washington St.
- North/South Alley between S. 57 St., S. 58 St., W. Washington St. & W. Scott St.
- North/South and East/West Alley between S. 57 St., S. 58 St., W. Burnham St. & W. Rogers St.
- North/South and East/West Alley between S. 55 St., S. 56 St., W. Rogers St. & W. Mobile St.
- North/South Alley between S. 58 St., S. 59 St., W. Mobile St. & W. Grant St.
- North/South and East/West Alley between S. 64 St., S. 65 St., W. Grant St. & W. Lincoln Ave.
- East/West Alley between S. 69 St., W. Stuth Pl., W. Lincoln Ave. & W. Beloit Rd.
- East/West Alley between W. Stuth Pl., S. 71 St., W. Lincoln Ave. & W. Stuth Pl.

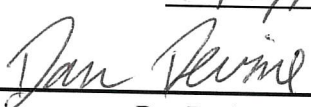
North/South Alley between S. 74 St., S. 75 St., W. Becher St. & W. Grant St.  
North/South Alley between S. 85 St., S. 86 St., W. Washington St. & W. Greenfield Ave.  
North/South Alley between S. 73 St., S. 74 St., W. Washington St. & W. Madison St.  
East/West Alley between S. 72 St., S. 73 St., W. Madison St. & W. Greenfield Ave.  
East/West Alley between S. 105 St., S. 106 St., W. Oklahoma Ave. & W. Euclid Ave.

by removal and reconstruction of the concrete alley pavement, storm sewer, storm sewer relay and storm underdrain be and the same is hereby approved and adopted.

2. The property against which the assessments are proposed is benefited; the assessments shown on the report are true and correct, have been determined on a reasonable basis and are hereby confirmed.
3. The Director of Public Works/City Engineer is hereby authorized and directed to prepare final plans for the aforesaid area in accordance with the terms of this resolution.

EngP1001A-P1015A

ADOPTED FEB 02 2010  
  
\_\_\_\_\_  
Paul M. Ziehler, City Admin. Officer, Clerk/Treas.

APPROVED 2/5/10  
  
\_\_\_\_\_  
Dan Devine, Mayor



ENGINEERING DEPARTMENT

Michael G. Lewis  
City Engineer

414/302-8360  
414/302-8366 (Fax)

City Hall  
7525 West Greenfield Avenue  
West Allis, Wisconsin 53214

[www.ci.west-allis.wi.us](http://www.ci.west-allis.wi.us)  
[mlewis@ci.west-allis.wi.us](mailto:mlewis@ci.west-allis.wi.us)

February 2, 2010

Honorable Mayor and Common Council  
West Allis, Wisconsin

Dear Mayor and Council Members:

I herewith respectfully submit my report on the assessment of benefits for removal and reconstruction of the concrete alley pavement, storm sewer, storm sewer relay and storm underdrain in:

- North/South Alley between S. 61 St., S. 62 St., 226 ft. north of W. Mineral St. & W. Mineral St.
- North/South Alley between S. 57 St., S. 58 St., W. Mineral St. & W. Washington St.
- North/South Alley between S. 61 St., S. 62 St., W. Mineral St. & W. Washington St.
- North/South Alley between S. 57 St., S. 58 St., W. Washington St. & W. Scott St.
- North/South and East/West Alley between S. 57 St., S. 58 St., W. Burnham St. & W. Rogers St.
- North/South and East/West Alley between S. 55 St., S. 56 St., W. Rogers St. & W. Mobile St.
- North/South Alley between S. 58 St., S. 59 St., W. Mobile St. & W. Grant St.
- North/South and East/West Alley between S. 64 St., S. 65 St., W. Grant St. & W. Lincoln Ave.
- East/West Alley between S. 69 St., W. Stuth Pl., W. Lincoln Ave. & W. Beloit Rd.
- East/West Alley between W. Stuth Pl., S. 71 St., W. Lincoln Ave. & W. Stuth Pl.
- North/South Alley between S. 74 St., S. 75 St., W. Becher St. & W. Grant St.
- North/South Alley between S. 85 St., S. 86 St., W. Washington St. & W. Greenfield Ave.
- North/South Alley between S. 73 St., S. 74 St., W. Washington St. & W. Madison St.
- East/West Alley between S. 72 St., S. 73 St., W. Madison St. & W. Greenfield Ave.
- East/West Alley between S. 105 St., S. 106 St., W. Oklahoma Ave. & W. Euclid Ave.

as directed in Preliminary Resolution No. R-2009-0226, adopted on October 6, 2009.

This report consists of the following schedules attached hereto:

- Schedule A. - Preliminary Plans and Specifications;
- Schedule B. - Estimate of Entire Cost of Proposed Improvements;
- Schedule C. - Schedule of Proposed Assessments Against Each Parcel Affected.

The properties against which the assessments are proposed are benefited.

Respectfully submitted,

Michael G. Lewis, P.E.  
Director of Public Works/City Engineer

MGL:ns

Encs.

**PROPOSED IMPROVEMENT OF**

North/South Alley between S. 61 St., S. 62 St., 226 ft. north of W. Mineral St. & W. Mineral St.  
North/South Alley between S. 57 St., S. 58 St., W. Mineral St. & W. Washington St.  
North/South Alley between S. 61 St., S. 62 St., W. Mineral St. & W. Washington St.  
North/South Alley between S. 57 St., S. 58 St., W. Washington St. & W. Scott St.  
North/South and East/West Alley between S. 57 St., S. 58 St., W. Burnham St. & W. Rogers St.  
North/South and East/West Alley between S. 55 St., S. 56 St., W. Rogers St. & W. Mobile St.  
North/South Alley between S. 58 St., S. 59 St., W. Mobile St. & W. Grant St.  
North/South and East/West Alley between S. 64 St., S. 65 St., W. Grant St. & W. Lincoln Ave.  
East/West Alley between S. 69 St., W. Stuth Pl., W. Lincoln Ave. & W. Beloit Rd.  
East/West Alley between W. Stuth Pl., S. 71 St., W. Lincoln Ave. & W. Stuth Pl.  
North/South Alley between S. 74 St., S. 75 St., W. Becher St. & W. Grant St.  
North/South Alley between S. 85 St., S. 86 St., W. Washington St. & W. Greenfield Ave.  
North/South Alley between S. 73 St., S. 74 St., W. Washington St. & W. Madison St.  
East/West Alley between S. 72 St., S. 73 St., W. Madison St. & W. Greenfield Ave.  
East/West Alley between S. 105 St., S. 106 St., W. Oklahoma Ave. & W. Euclid Ave.

by removal and reconstruction of the concrete alley pavement, storm sewer, storm sewer relay  
and storm underdrain

**SCHEDULE "A"**

Preliminary Plans & Specifications Attached

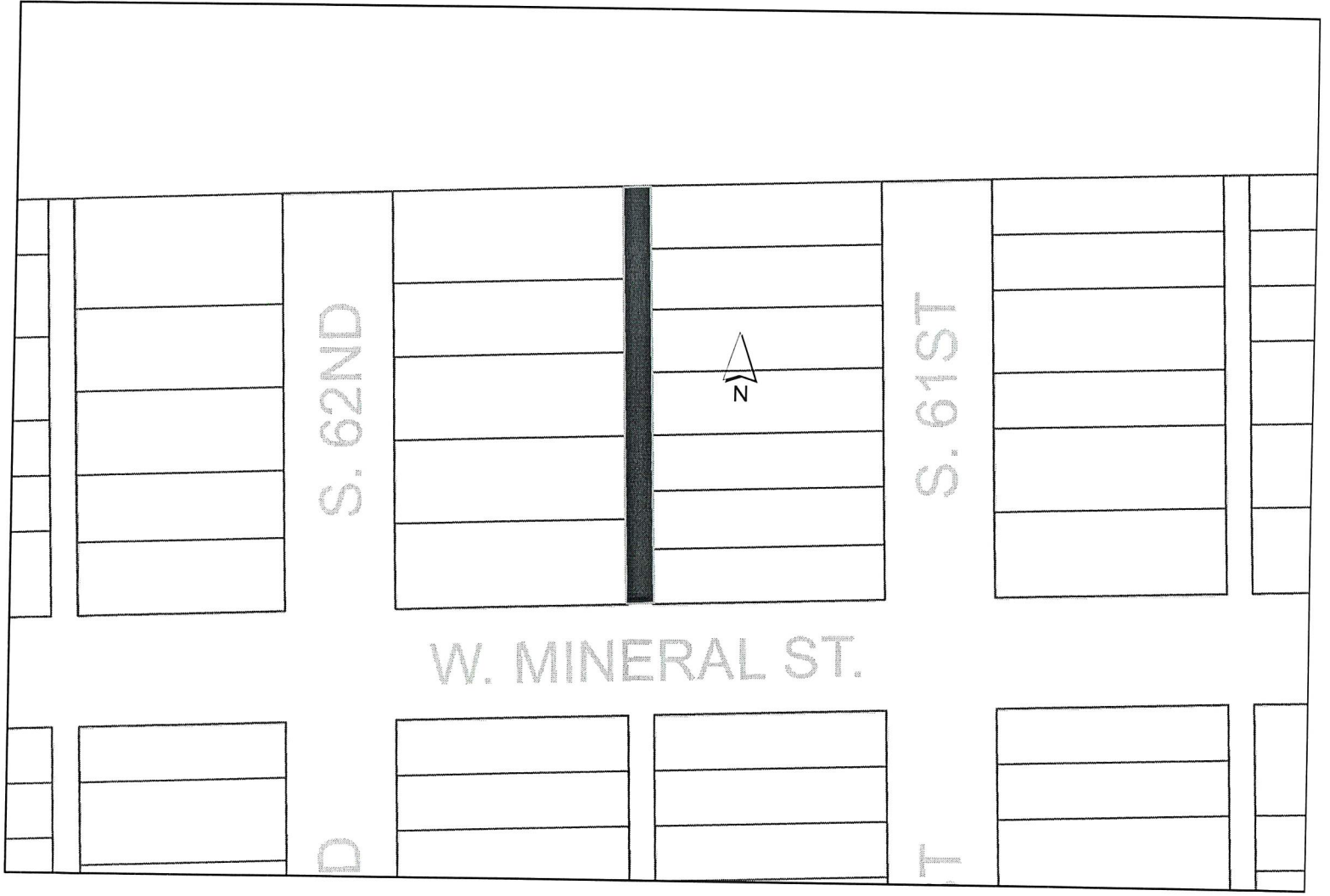
**SCHEDULE "B"**

Estimate of the Entire Cost

\$717,000

**SCHEDULE "C"**

Schedule of Proposed Assessments  
Against Each Parcel Affected



S. 62ND

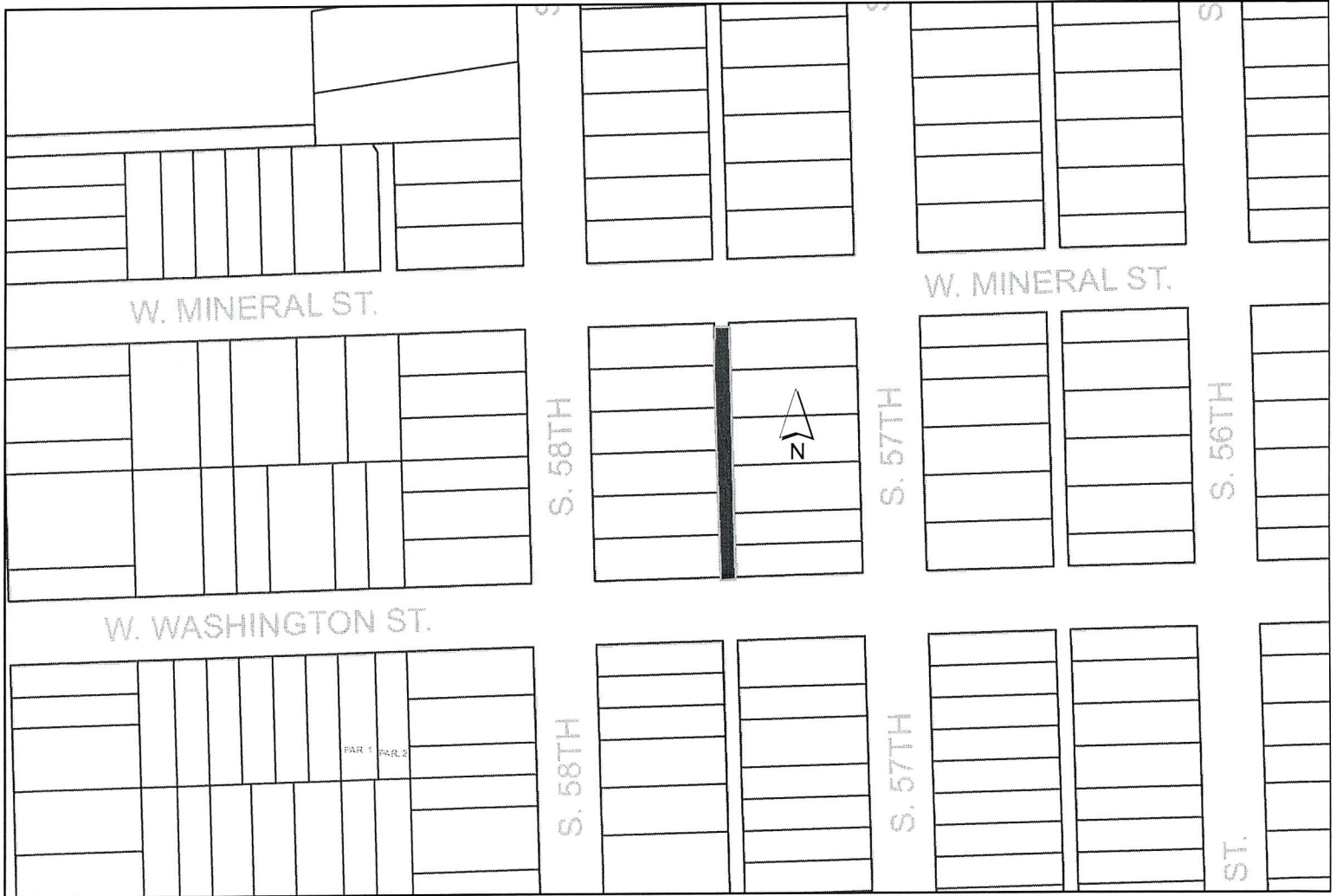
S. 61ST

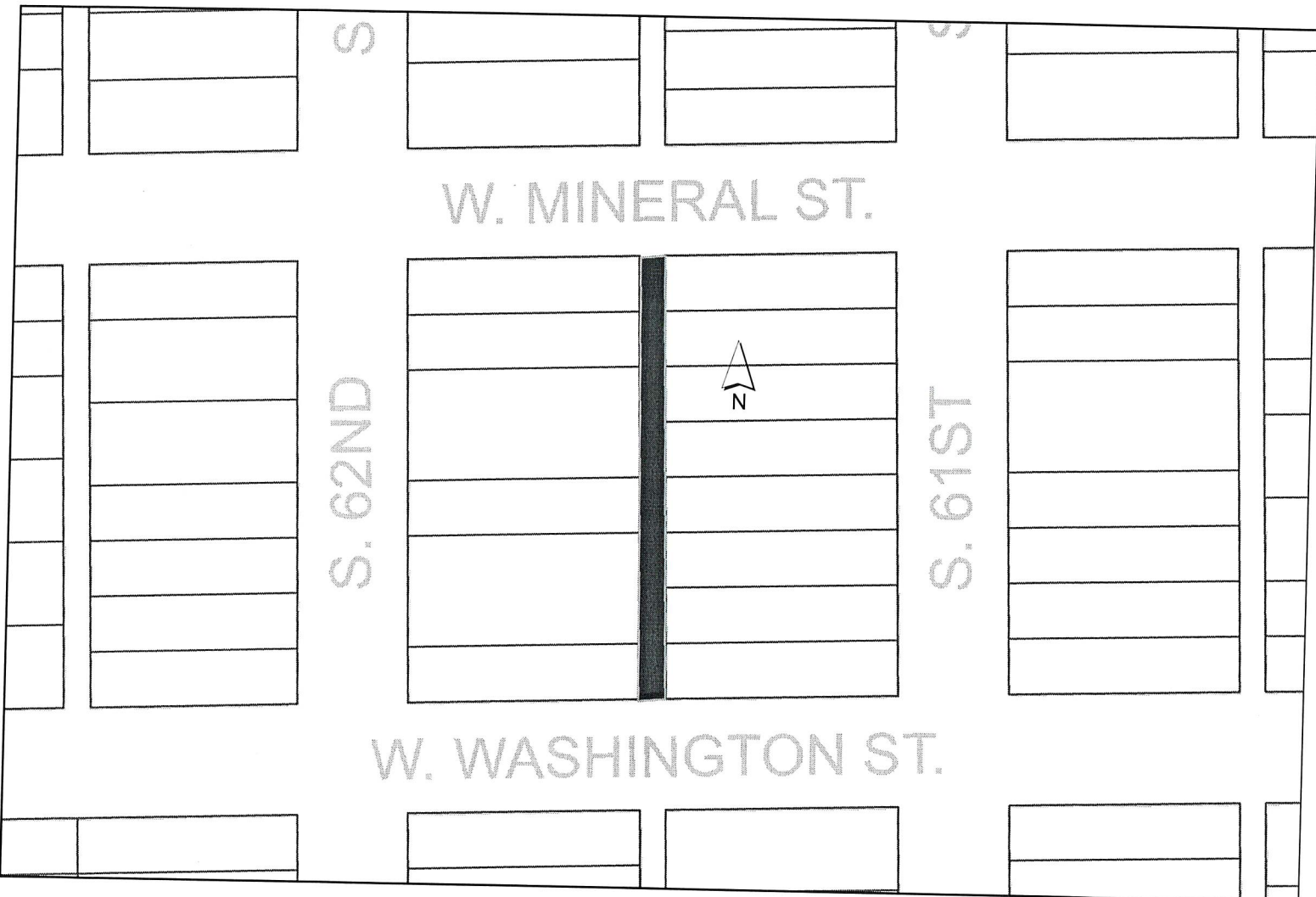
W. MINERAL ST.



D

T





S

S. 62ND

W. MINERAL ST.

S. 61ST

W. WASHINGTON ST.





W. MINERAL ST.

W. MINERAL ST.

W. WASHINGTON ST.

W. SCOTT ST.

S. 58TH

S. 57TH

S. 56TH

S. 58TH

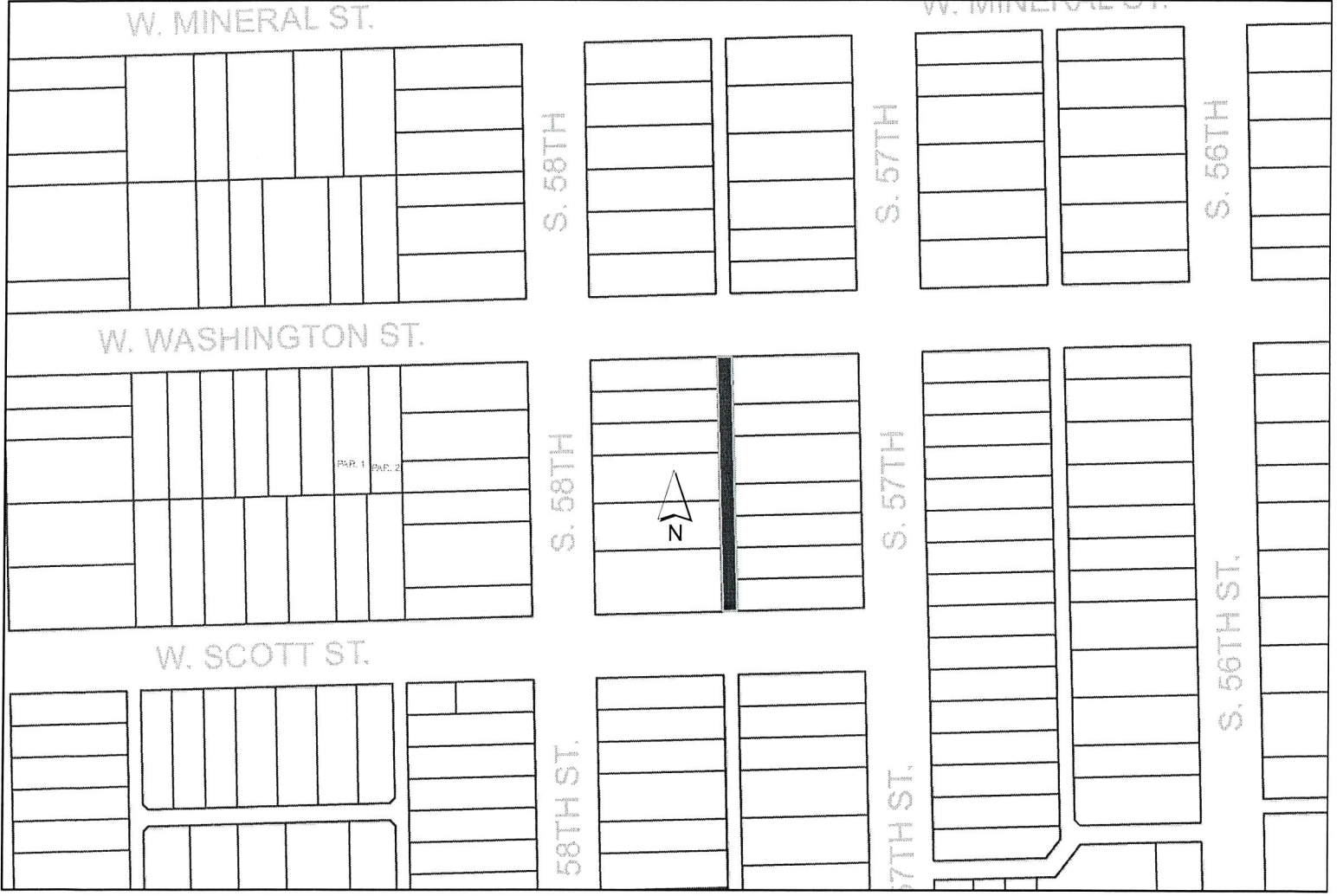
S. 57TH

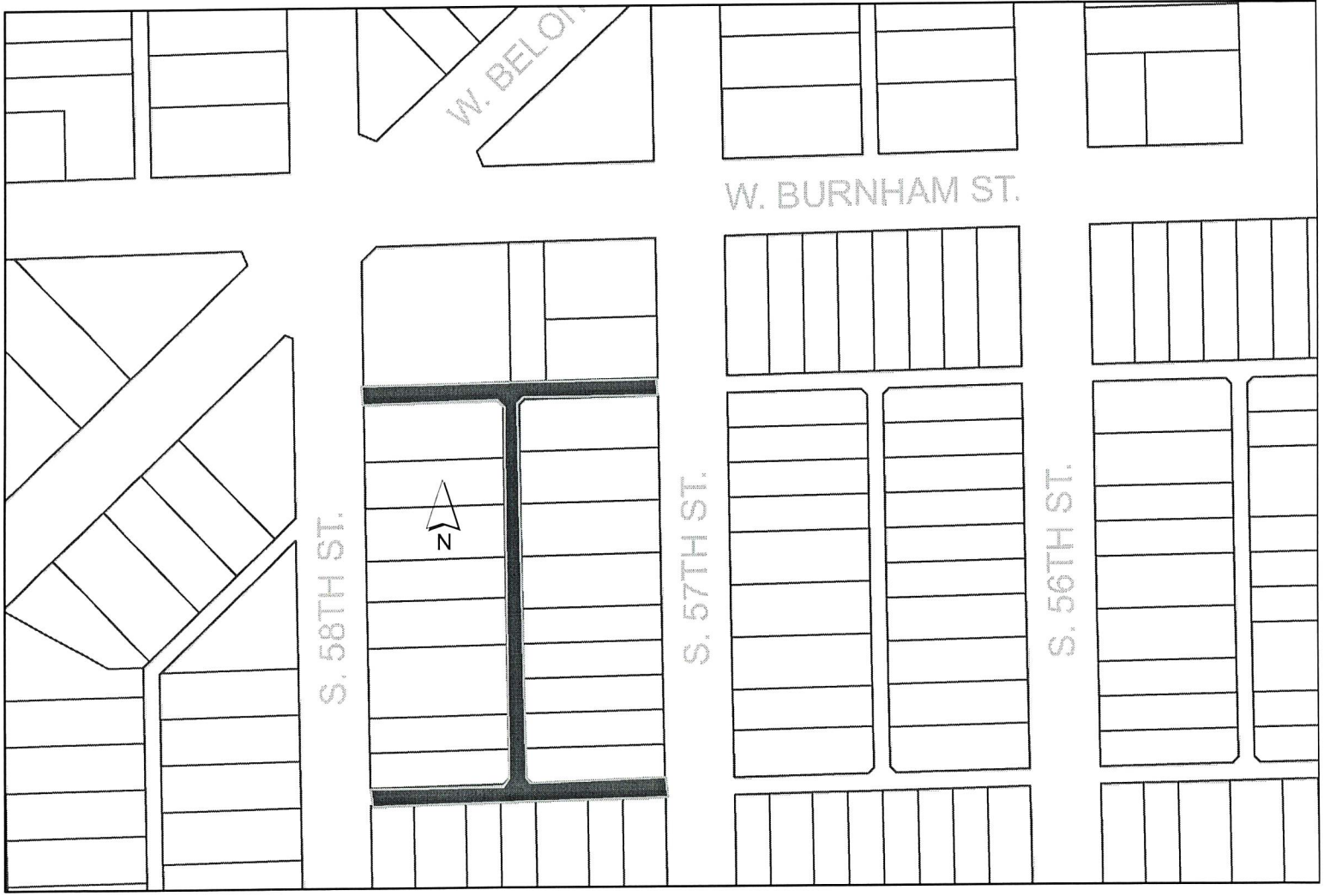
S. 56TH ST.

58TH ST.

57TH ST.

PAR. 1  
PAGE 2





S. 58TH ST.



S. 57TH ST.

S. 56TH ST.

W. BURNHAM ST.

W. BELMONT



S. 57TH ST.

W. ROGERS ST.

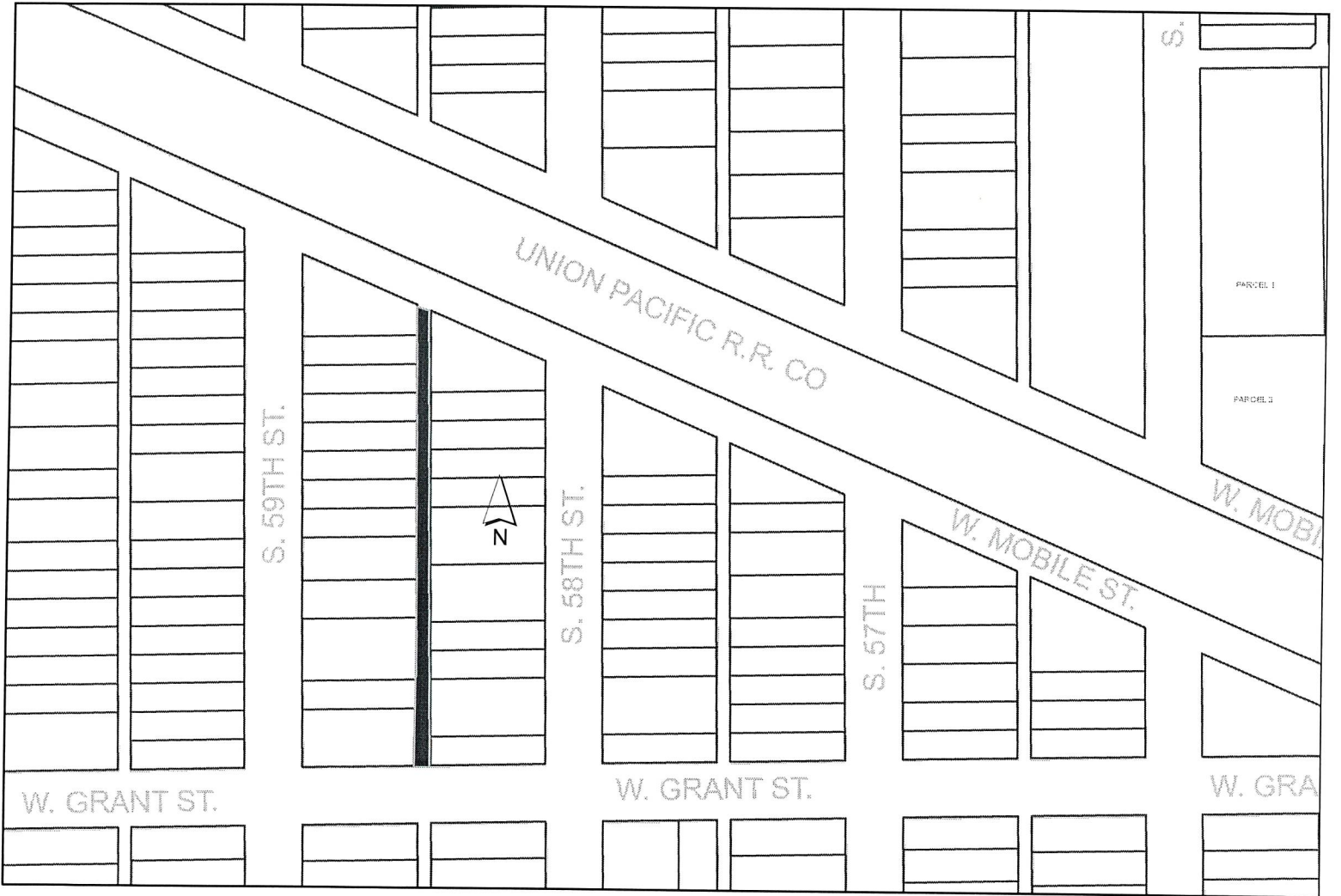
S. 56TH ST. 

S. 55TH ST.

S. 54TH ST.

PARCEL 1

PARCEL 2





S. 66TH ST.

S. 65TH ST.

S. 64TH ST.

S. 63RD ST.

S. 62ND ST.

W. GRANT ST.

W. LINCOLN AVE.







W. LINCOLN AVE.

S. 71ST ST.

W. STUTH PL.

S. BUCHANAN PL.



S. 69TH

W. BELOIT RD.

S. 68TH ST.

PARCEL 1

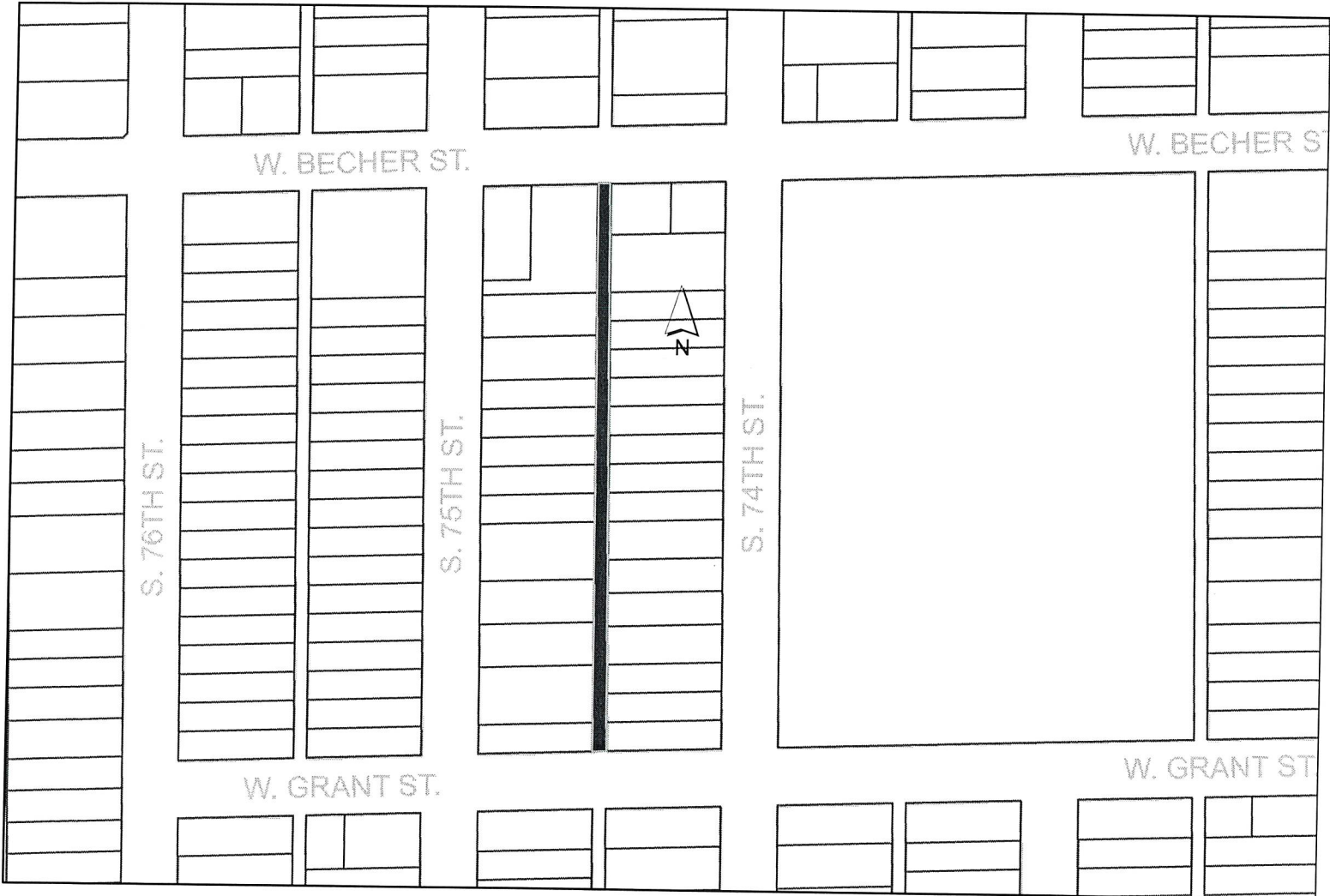
PARCEL 2

PARCEL 1

PARCEL 2

W. HAYES AVE.

PARCEL 1



W. BECHER ST.

W. BECHER ST

S. 76TH ST.

S. 75TH ST.

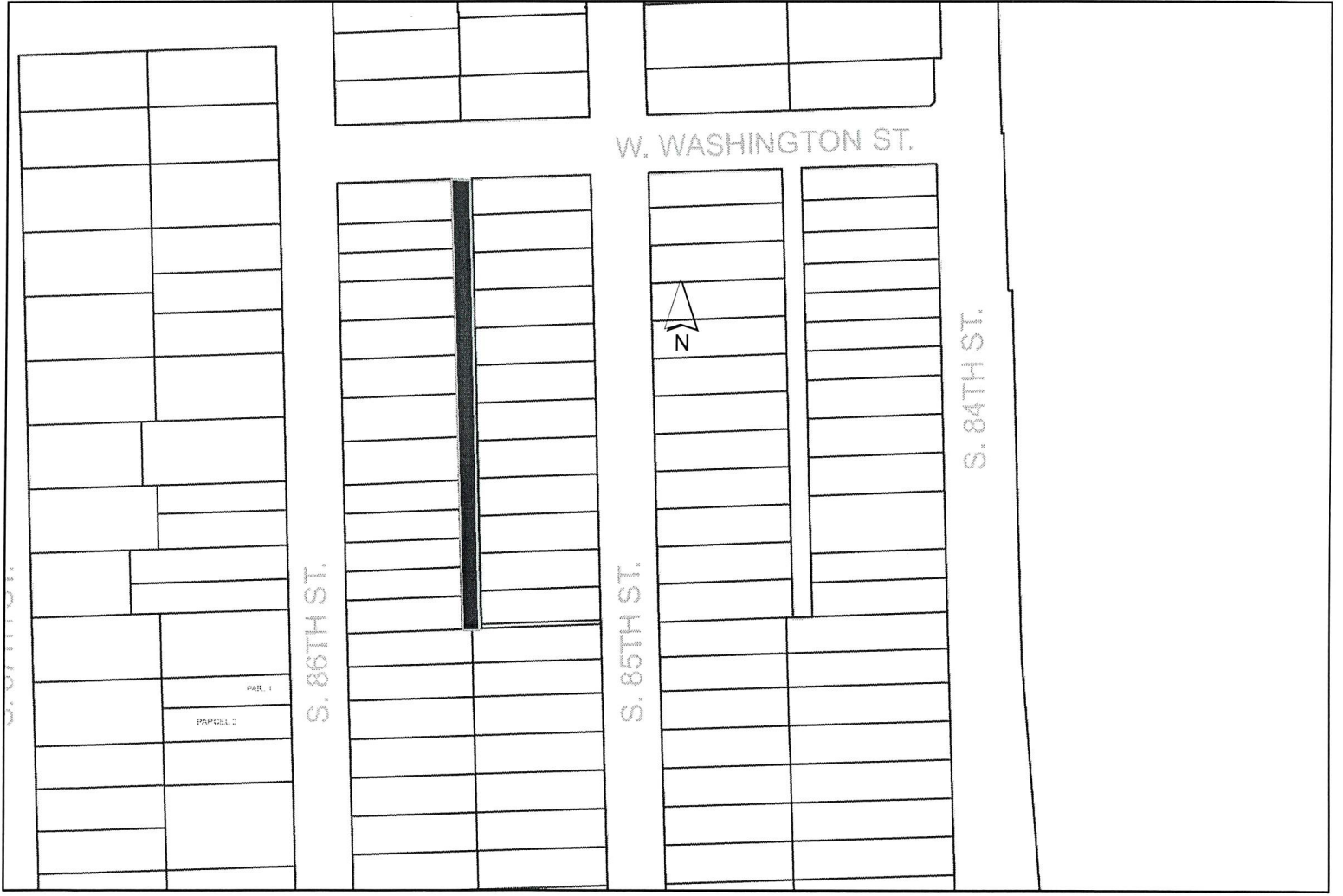
S. 74TH ST.

W. GRANT ST.

W. GRANT ST







S. 86TH ST.

S. 86TH ST.

S. 85TH ST.

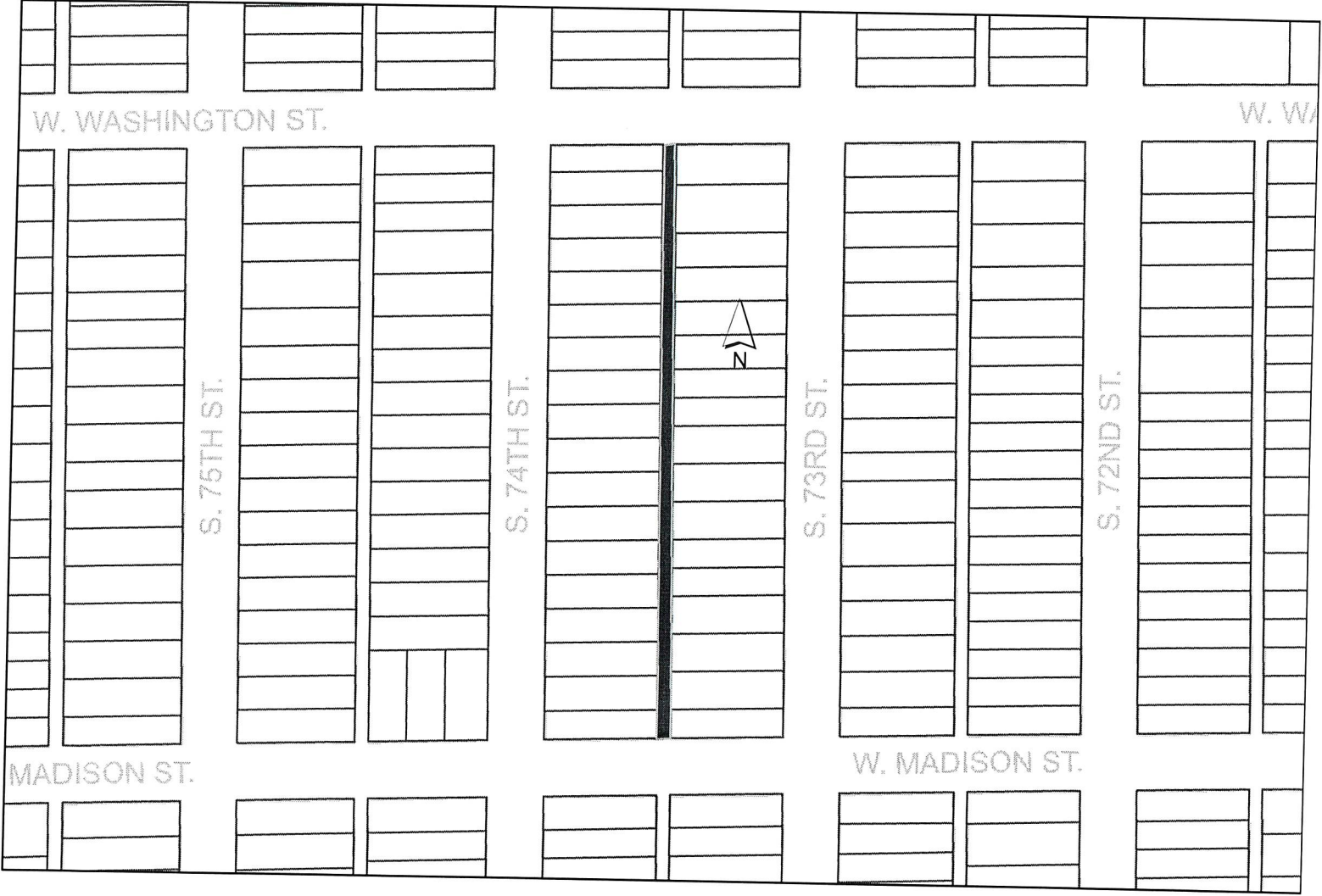
S. 84TH ST.

W. WASHINGTON ST.

PAR. 1

PARCEL 2





W. WASHINGTON ST.

W. WA

S. 75TH ST.

S. 74TH ST.

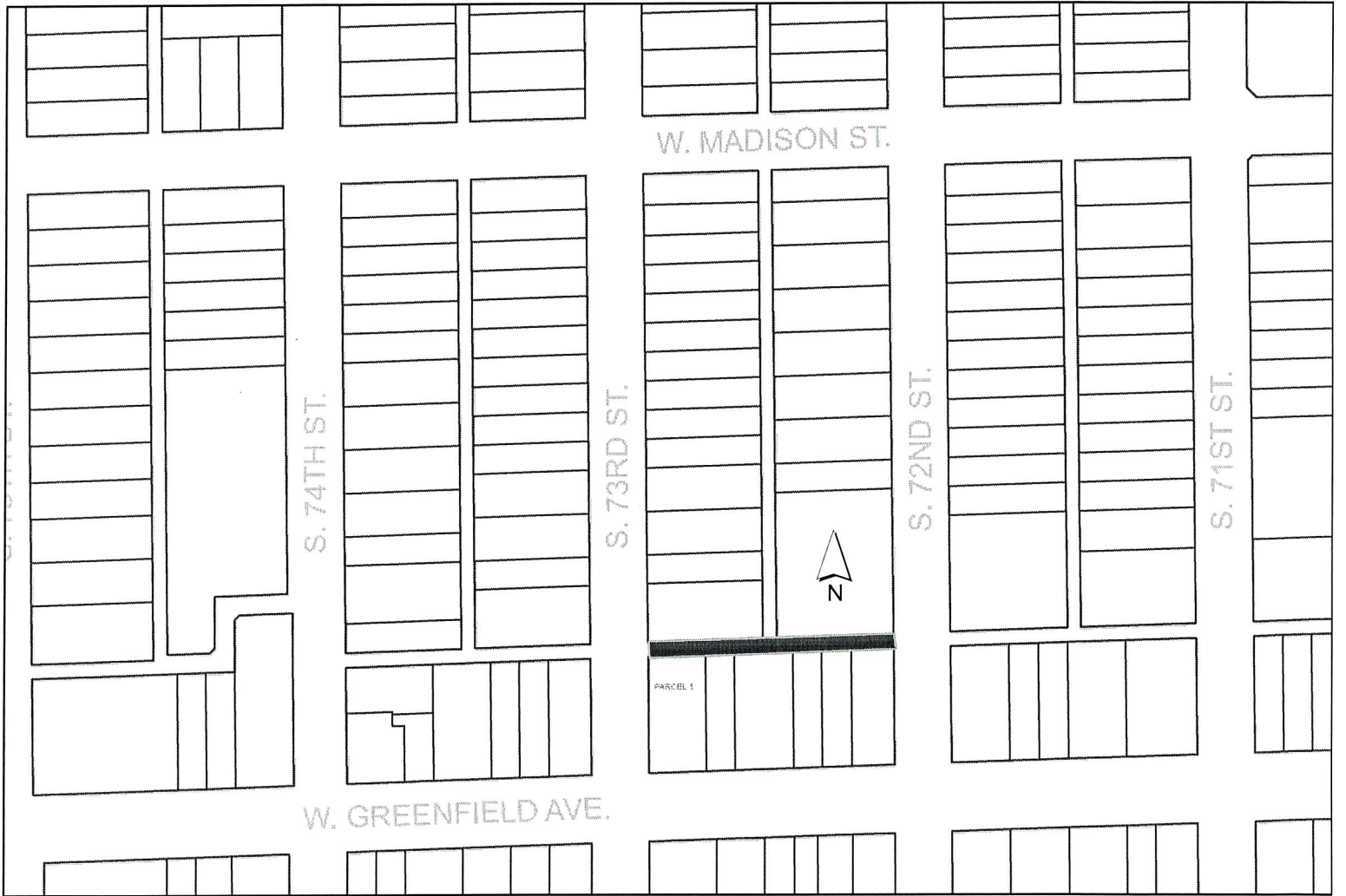
S. 73RD ST.

S. 72ND ST.

MADISON ST.

W. MADISON ST.





W. MADISON ST.

S. 74TH ST.

S. 73RD ST.

S. 72ND ST.

S. 71ST ST.

W. GREENFIELD AVE.



PARCEL 1





ENGINEERING DEPARTMENT

Michael G. Lewis  
City Engineer

414/302-8360  
414/302-8366 (Fax)

City Hall  
7525 West Greenfield Avenue  
West Allis, Wisconsin 53214

www.ci.west-allis.wi.us  
mlewis@ci.west-allis.wi.us

February 2, 2010

Board of Public Works  
West Allis City Hall  
West Allis, Wisconsin

Dear Board Members:

I am herewith submitting preliminary plans and an estimate of costs for the removal and reconstruction of the concrete alley pavement, storm sewer, storm sewer relay and storm underdrain in:

- North/South Alley between S. 61 St., S. 62 St., 226 ft. north of W. Mineral St. & W. Mineral St.
- North/South Alley between S. 57 St., S. 58 St., W. Mineral St. & W. Washington St.
- North/South Alley between S. 61 St., S. 62 St., W. Mineral St. & W. Washington St.
- North/South Alley between S. 57 St., S. 58 St., W. Washington St. & W. Scott St.
- North/South and East/West Alley between S. 57 St., S. 58 St., W. Burnham St. & W. Rogers St.
- North/South and East/West Alley between S. 55 St., S. 56 St., W. Rogers St. & W. Mobile St.
- North/South Alley between S. 58 St., S. 59 St., W. Mobile St. & W. Grant St.
- North/South and East/West Alley between S. 64 St., S. 65 St., W. Grant St. & W. Lincoln Ave.
- East/West Alley between S. 69 St., W. Stuth Pl., W. Lincoln Ave. & W. Beloit Rd.
- East/West Alley between W. Stuth Pl., S. 71 St., W. Lincoln Ave. & W. Stuth Pl.
- North/South Alley between S. 74 St., S. 75 St., W. Becher St. & W. Grant St.
- North/South Alley between S. 85 St., S. 86 St., W. Washington St. & W. Greenfield Ave.
- North/South Alley between S. 73 St., S. 74 St., W. Washington St. & W. Madison St.
- East/West Alley between S. 72 St., S. 73 St., W. Madison St. & W. Greenfield Ave.
- East/West Alley between S. 105 St., S. 106 St., W. Oklahoma Ave. & W. Euclid Ave.

Estimated Construction Cost:	\$ 652,000
Contingency:	65,000
<b>TOTAL:</b>	<b>\$ 717,000</b>

Sincerely,

Michael G. Lewis, P.E.  
Director of Public Works/City Engineer

MGL:ns

## ASSESSMENT REPORT FOR COUNCIL

**HEARING DATE: February 2, 2010**

**LOCATION  
DESCRIPTION:**

North/South Alley between S. 61 St., S. 62 St., 226 ft. north of W. Mineral St. & W. Mineral St.  
North/South Alley between S. 57 St., S. 58 St., W. Mineral St. & W. Washington St.  
North/South Alley between S. 61 St., S. 62 St., W. Mineral St. & W. Washington St.  
North/South Alley between S. 57 St., S. 58 St., W. Washington St. & W. Scott St.  
North/South and East/West Alley between S. 57 St., S. 58 St., W. Burnham St. & W. Rogers St.  
North/South and East/West Alley between S. 55 St., S. 56 St., W. Rogers St. & W. Mobile St.  
North/South Alley between S. 58 St., S. 59 St., W. Mobile St. & W. Grant St.  
North/South and East/West Alley between S. 64 St., S. 65 St., W. Grant St. & W. Lincoln Ave.  
East/West Alley between S. 69 St., W. Stuth Pl., W. Lincoln Ave. & W. Beloit Rd.  
East/West Alley between W. Stuth Pl., S. 71 St., W. Lincoln Ave. & W. Stuth Pl.  
North/South Alley between S. 74 St., S. 75 St., W. Becher St. & W. Grant St.  
North/South Alley between S. 85 St., S. 86 St., W. Washington St. & W. Greenfield Ave.  
North/South Alley between S. 73 St., S. 74 St., W. Washington St. & W. Madison St.  
East/West Alley between S. 72 St., S. 73 St., W. Madison St. & W. Greenfield Ave.  
East/West Alley between S. 105 St., S. 106 St., W. Oklahoma Ave. & W. Euclid Ave.

**ACCOUNT NO.:** P1001A-P1015A

**INTEREST RATE:** 5.0%

**2010 ASSESSMENT RATES**

	<b><u>Resid.</u></b>	<b><u>Comm.</u></b>
<b><u>Alleys</u></b>		
Concrete Reconstruct, 14', lin. ft.	\$22.18	\$27.72
Concrete Reconstruct, 15', lin. ft.	\$22.92	\$28.65
Concrete Reconstruct, 16', lin. ft.	\$23.66	\$29.57
Concrete Reconstruct, 18', lin. ft.	\$25.17	\$31.47
Concrete Reconstruct, 20', lin. ft.	\$26.69	\$33.36

*The properties against which the assessments are proposed are benefited.*



City of West Allis Engineering Department  
 Project Details P1001A

North/South Alley between S. 61 St., S. 62 St., 226 ft. north of W. Mineral St. & W. Mineral St.

**Property Assessments**

439-0039-000	951-953 S 61 ST	Robert E. Lyons	22.18 x 34.00 Lin Ft	=	\$	Residential	10
	Alley 14' Concrete Reconstruction					754.12 100.00	\$ 754.12
						<b>Total:</b>	<b>\$ 754.12</b>
439-0040-000	955 S 61 ST	Dennis Kurutz & Robin L. Kurutz	22.18 x 33.00 Lin Ft	=	\$	Residential	20
	Alley 14' Concrete Reconstruction					731.94 100.00	\$ 731.94
						<b>Total:</b>	<b>\$ 731.94</b>
439-0041-000	961 S 61 ST	Dennis F. Lewandowski & Mark A. Wagner	22.18 x 34.00 Lin Ft	=	\$	Residential	30
	Alley 14' Concrete Reconstruction					754.12 100.00	\$ 754.12
						<b>Total:</b>	<b>\$ 754.12</b>
439-0042-000	965 S 61 ST	Gerald Gunderson	22.18 x 34.00 Lin Ft	=	\$	Residential	40
	Alley 14' Concrete Reconstruction					754.12 100.00	\$ 754.12
						<b>Total:</b>	<b>\$ 754.12</b>
439-0043-000	969 S 61 ST	Keith J. Stumpf & Cathleen Stumpf	22.18 x 30.00 Lin Ft	=	\$	Residential	50
	Alley 14' Concrete Reconstruction					665.40 100.00	\$ 665.40
						<b>Total:</b>	<b>\$ 665.40</b>
439-0044-000	973 S 61 ST	Colla Rosemary C Family Trust	22.18 x 31.50 Lin Ft	=	\$	Residential	60
	Alley 14' Concrete Reconstruction					698.67 100.00	\$ 698.67
						<b>Total:</b>	<b>\$ 698.67</b>
439-0045-000	979 S 61 ST	Charlotte A. King	22.18 x 30.00 Lin Ft	=	\$	Residential	70
	Alley 14' Concrete Reconstruction					665.40 100.00	\$ 665.40
						<b>Total:</b>	<b>\$ 665.40</b>



**City of West Allis Engineering Department**  
**Project Details P1001A**  
 North/South Alley between S. 61 St., S. 62 St., 226 ft. north of W. Mineral St. & W. Mineral St.

439-0050-000	952 S 62 ST	Nicholas M. Klesper & Susan E. Klesper	Residential	80
	Alley 14' Concrete Reconstruction	22.18 x 50.00 Lin Ft = \$ 1,109.00	100.00	\$ 1,109.00
	Wall Modular Block or Timber	2,500.00 x 1.00 LUMP SUM = \$ 2,500.00	100.00	\$ 2,500.00
		<b>Total: \$ 3,609.00</b>		
439-0049-000	958 S 62 ST	Robert Hovde	Residential	90
	Alley 14' Concrete Reconstruction	22.18 x 40.00 Lin Ft = \$ 887.20	100.00	\$ 887.20
		<b>Total: \$ 887.20</b>		
439-0048-000	962 S 62 ST	Tracey L. Glaser	Residential	100
	Alley 14' Concrete Reconstruction	22.18 x 45.00 Lin Ft = \$ 998.10	100.00	\$ 998.10
		<b>Total: \$ 998.10</b>		
439-0047-000	968 S 62 ST	Harold R. Heinrich	Residential	110
	Alley 14' Concrete Reconstruction	22.18 x 45.00 Lin Ft = \$ 998.10	100.00	\$ 998.10
		<b>Total: \$ 998.10</b>		
439-0046-000	974 S 62 ST	Gary L. Schliepp & Dianne Schliepp	Residential	120
	Alley 14' Concrete Reconstruction	22.18 x 46.50 Lin Ft = \$ 1,031.37	100.00	\$ 1,031.37
		<b>Total: \$ 1,031.37</b>		

**Property Type Summary**

12	Residential	
----	-------------	--





**City of West Allis Engineering Department**  
**Project Details P1001A**  
 North/South Alley between S. 61 St., S. 62 St., 226 ft. north of W. Mineral S. & W. Mineral St.

**Item Summary**

	Total Quantity	Gross Total	Net Total
Alley 14'			
Concrete Reconstruction			
Residential	453.00	\$10,047.54	\$10,047.54
		<u>\$10,047.54</u>	<u>\$10,047.54</u>
Wall			
Modular Block or Timber			
Residential	1.00	\$2,500.00	\$2,500.00
		<u>\$2,500.00</u>	<u>\$2,500.00</u>
Grand Totals		<u>\$12,547.54</u>	<u>\$12,547.54</u>







**City of West Allis Engineering Department**  
**Project Details P1002A**  
 North/South Alley between S. 57 St., S. 58 St., W. Mineral St. & W. Washington St.

**Item Summary**

	Total Quantity	Gross Total	Net Total
Alley 14'			
Concrete Reconstruction			
Residential	480.00 Lin Ft	\$10,646.40	\$10,646.40
		\$10,646.40	\$10,646.40
Grand Totals		\$10,646.40	\$10,646.40







City of West Allis Engineering Department  
Project Details P1003A  
North/South Alley between S. 61 St., S. 62 St., W. Mineral St. & W. Washington St.

**Item Summary**

	Total Quantity	Gross Total	Net Total
Alley 14'			
Concrete Reconstruction			
Residential	480.00 Lin Ft	\$10,646.40	\$10,646.40
		<u>\$10,646.40</u>	<u>\$10,646.40</u>
Grand Totals		\$10,646.40	\$10,646.40









**City of West Allis Engineering Department**  
**Project Details P1004A**  
 North/South Alley between S. 57 St., S. 58 St., W. Washington St. & W. Scott St.

**Item Summary**

	Total Quantity		Gross Total	Net Total
Alley 14'				
Concrete Reconstruction				
Residential	480.00	Lin Ft	\$10,646.40	\$10,646.40
			\$10,646.40	\$10,646.40
Grand Totals			\$10,646.40	\$10,646.40











City of West Allis Engineering Department  
 Project Details P1005A  
 North/South and East/West Alley between S. 57 St., S. 58 St., W. Burnham St. & W. Rogers St.

**Item Summary**

	Total Quantity		Gross Total	Net Total
<b>Alley 14'</b>				
Concrete Reconstruction				
Residential	660.00	Lin Ft	\$14,638.80	\$14,638.80
			\$14,638.80	\$14,638.80
<b>Alley 15'</b>				
Concrete Reconstruction				
Commercial	217.00	Lin Ft	\$6,217.05	\$6,217.05
Residential	727.00	Lin Ft	\$16,662.84	\$7,861.56
			\$22,879.89	\$14,078.61
<b>Wall</b>				
Modular Block or Timber				
Residential	51.00	Sq Ft	\$924.63	\$924.63
			\$924.63	\$924.63
<b>Grand Totals</b>			\$38,443.32	\$29,642.04











City of West Allis Engineering Department  
Project Details P1006A  
North/South and East/West Alley between S. 55 St., S. 56 St., W. Rogers St. & W. Mobile St.

474-0259-000	2054-2056 S 56 ST	Tana Pelke	22.18 x	30.00 Lin Ft	=	\$	Residential	220
Alley 14' Concrete Reconstruction							665.40 100.00	\$ 665.40
							Total:	\$ 665.40
474-0260-000	2058-2060 S 56 ST	Kathleen S. Salbashian	22.18 x	30.00 Lin Ft	=	\$	Residential	230
Alley 14' Concrete Reconstruction							665.40 100.00	\$ 665.40
							Total:	\$ 665.40
474-0261-000	2062-2064 S 56 ST	Thomas J. Trzebiatowski	22.18 x	30.00 Lin Ft	=	\$	Residential	240
Alley 14' Concrete Reconstruction							665.40 100.00	\$ 665.40
							Total:	\$ 665.40
474-0243-000	5503 W ROGERS ST	Kathaleen Harsch	28.65 x	37.00 Lin Ft	=	\$	Commercial	250
Alley 15' Concrete Reconstruction							1,060.05 100.00	\$ 1,060.05
							Total:	\$ 1,060.05
474-0244-000	5507 W ROGERS ST	Betty M. Piontek & Linda C. Brooks	22.92 x	30.00 Lin Ft	=	\$	Residential	260
Alley 15' Concrete Reconstruction							687.60 100.00	\$ 687.60
							Total:	\$ 687.60
474-0245-000	5509-5511 W ROGERS ST	MLM Holdings LLC	22.92 x	30.00 Lin Ft	=	\$	Residential	270
Alley 15' Concrete Reconstruction							687.60 100.00	\$ 687.60
							Total:	\$ 687.60
474-0246-000	5515-5517 W ROGERS ST	Juan A. Saavedra & Melissa J. Saavedra	22.92 x	45.00 Lin Ft	=	\$	Residential	280
Alley 15' Concrete Reconstruction							1,031.40 100.00	\$ 1,031.40
							Total:	\$ 1,031.40
474-0247-000	5521 W ROGERS ST	Joseph Socha Jr	22.92 x	30.00 Lin Ft	=	\$	Residential	290
Alley 15' Concrete Reconstruction							687.60 100.00	\$ 687.60
							Total:	\$ 687.60



**City of West Allis Engineering Department**  
**Project Details P1006A**  
 North/South and East/West Alley between S. 55 St., S. 56 St., W. Rogers St. & W. Mobile St.

474-0248-000	5529 W ROGERS ST	Howard B. Daniels & Stephanie I. Daniels	Residential	300
Alley 15' Concrete Reconstruction		22.92 x 45.00 Lin Ft	= \$ 1,031.40	100.00 \$ 1,031.40
				Total: \$ 1,031.40
474-0249-000	5531-5533 W ROGERS ST	Jeffrey M. Goff & Diane M. Goff	Residential	310
Alley 15' Concrete Reconstruction		22.92 x 37.00 Lin Ft	= \$ 848.04	100.00 \$ 848.04
				Total: \$ 848.04
474-0264-004	2075-2109 S 55 ST	Ibex 1 LLC	Commercial	320
Alley 15' Concrete Reconstruction		28.65 x 127.91	= \$ 3,664.62	100.00 \$ 3,664.62
				Total: \$ 3,664.62
474-0264-003	2074-2116 S 56 ST	Ibex 1 LLC	Commercial	330
Alley 15' Concrete Reconstruction		28.65 x 126.09 Lin Ft	= \$ 3,612.48	100.00 \$ 3,612.48
				Total: \$ 3,612.48

**Property Type Summary**

4	Commercial
29	Residential



**City of West Allis Engineering Department**  
**Project Details P1006A**  
 North/South and East/West Alley between S. 55 St., S. 56 St., W. Rogers St. & W. Mobile St.

**Item Summary**

	Total Quantity		Gross Total	Net Total
<b>Alley 14'</b>				
Concrete Reconstruction				
Commercial	50.00	Lin Ft	\$1,386.00	\$1,386.00
Residential	720.00	Lin Ft	\$15,969.60	\$15,969.60
			<u>\$17,355.60</u>	<u>\$17,355.60</u>
<b>Alley 15'</b>				
Concrete Reconstruction				
Commercial	127.91		\$3,664.62	\$3,664.62
Commercial	403.09	Lin Ft	\$11,548.53	\$7,422.93
Residential	457.00	Lin Ft	\$10,474.44	\$6,073.80
			<u>\$25,687.59</u>	<u>\$17,161.35</u>
<b>Wall</b>				
Modular Block or Timber				
Residential	116.00	Sq Ft	\$2,103.08	\$2,103.08
			<u>\$2,103.08</u>	<u>\$2,103.08</u>
<b>Grand Totals</b>			<u>\$45,146.27</u>	<u>\$36,620.03</u>



City of West Allis Engineering Department  
 Project Details P1007A  
 North/South Alley between S. 58 St., S. 59 St., W. Mobile St & W. Grant St.

**Property Assessments**

474-0299-001	2101-2103 S 58 ST	Sergio Ramos Perez & Patricia Contreras		Residential	10
Alley 14' Concrete Reconstruction		22.18 x	85.95 Lin Ft	= \$ 1,906.37	79.00 \$ 1,506.03
				Total: \$ 1,506.03	
474-0300-000	2105 S 58 ST	Bingham Judy M Trust		Residential	20
Alley 14' Concrete Reconstruction		22.18 x	30.00 Lin Ft	= \$ 665.40	100.00 \$ 665.40
				Total: \$ 665.40	
474-0301-000	2111 S 58 ST	Leila M. Rivera		Residential	30
Alley 14' Concrete Reconstruction		22.18 x	30.00 Lin Ft	= \$ 665.40	100.00 \$ 665.40
				Total: \$ 665.40	
474-0302-000	2113 S 58 ST	Andrew C. Van Blaricom		Residential	40
Alley 14' Concrete Reconstruction		22.18 x	30.00 Lin Ft	= \$ 665.40	100.00 \$ 665.40
				Total: \$ 665.40	
474-0303-000	2119 S 58 ST	Frances W. Colon-Ortiz & Jose O. Rivera		Residential	50
Alley 14' Concrete Reconstruction		22.18 x	30.00 Lin Ft	= \$ 665.40	100.00 \$ 665.40
				Total: \$ 665.40	
474-0304-000	2121 S 58 ST	Richard G. Cardin		Residential	60
Alley 14' Concrete Reconstruction		22.18 x	60.00 Lin Ft	= \$ 1,330.80	100.00 \$ 1,330.80
				Total: \$ 1,330.80	
474-0305-001	2129-2131 S 58 ST	Mary E. Henschel		Residential	70
Alley 14' Concrete Reconstruction		22.18 x	60.00 Lin Ft	= \$ 1,330.80	100.00 \$ 1,330.80
				Total: \$ 1,330.80	









**City of West Allis Engineering Department**  
**Project Details P1007A**  
 North/South Alley between S. 58 St., S. 59 St., W. Mobile St & W. Grant St.

474-0311-000      2168 S 59 ST      Lucas J. Golla & Melissa A. Golla      Residential      240  
 Alley 14' Concrete Reconstruction      22.18 x 60.00 Lin Ft      = \$ 1,330.80      100.00      \$ 1,330.80

Total: \$ 1,330.80

**Property Type Summary**

24 Residential

**Item Summary**

	Total Quantity		Gross Total	Net Total
Alley 14'				
Concrete Reconstruction				
Residential	958.29	Lin Ft	<u>\$21,254.87</u>	<u>\$20,854.53</u>
			\$21,254.87	\$20,854.53

Grand Totals      \$21,254.87      \$20,854.53









**City of West Allis Engineering Department**  
**Project Details P1008A**

North/South and East/West Alley between S. 64 St., S. 65 St., W. Grant St. & W. Lincoln Ave.

475-0485-000	2256-2258 S 65 ST	Andrew Ciszewski & Jean Ciszewski	Residential	230
Alley 14'	Concrete Reconstruction	22.18 x	45.00 Lin Ft	= \$ 998.10 100.00 \$ 998.10
Alley 14'	Concrete Reconstruction	22.18 x	100.26 Lin Ft	= \$ 2,223.77 20.00 \$ 444.75
	Reduction Code Longside			
				<b>Total: \$ 1,442.85</b>
475-0480-001	6406 W LINCOLN AVE	Thomas A. Morrison	Commercial	240
Alley 14'	Concrete Reconstruction	27.72 x	84.76 Lin Ft	= \$ 2,349.55 100.00 \$ 2,349.55
				<b>Total: \$ 2,349.55</b>
475-0482-000	6412 W LINCOLN AVE	Richlen Housing LLP	Residential	250
Alley 14'	Concrete Reconstruction	22.18 x	45.00 Lin Ft	= \$ 998.10 100.00 \$ 998.10
				<b>Total: \$ 998.10</b>
475-0484-001	6424 W LINCOLN AVE	Richlen Garage Inc	Commercial	260
Alley 14'	Concrete Reconstruction	27.72 x	84.76 Lin Ft	= \$ 2,349.55 100.00 \$ 2,349.55
				<b>Total: \$ 2,349.55</b>

**Property Type Summary**

2	Commercial
24	Residential



**City of West Allis Engineering Department**  
**Project Details P1008A**

North/South and East/West Alley between S. 64 St., S. 65 St., W. Grant St. & W. Lincoln Ave.

**Item Summary**

	Total Quantity		Gross Total	Net Total
Alley 14'				
Concrete Reconstruction				
Commercial	169.52	Lin Ft	\$4,699.10	\$4,699.10
Residential	1,177.52	Lin Ft	\$26,117.39	\$22,559.35
Wall				
Modular Block or Timber				
Residential	212.00	Sq Ft	\$3,843.56	\$3,843.56
Grand Totals			\$34,660.05	\$31,102.01



**City of West Allis Engineering Department**  
**Project Details P1009A**  
 East/West Alley between S. 69 St., W. Stuth Pl., W. Lincoln Ave. & W. Beloit Rd.

**Property Assessments**

489-0221-000	6933 W LINCOLN AVE	Stephen M. Kassa	Residential	10
Alley 20' Concrete Reconstruction		26.69 x 30.00 Lin Ft	= \$ 800.70	100.00 \$ 800.70
			<b>Total: \$ 800.70</b>	
489-0222-000	7005 W STUTH PL	Kevin W. Berger	Residential	20
Alley 20' Concrete Reconstruction		26.69 x 63.30 Lin Ft	= \$ 1,689.48	84.00 \$ 1,419.16
Reduction Code Rectangularized			<b>Total: \$ 1,419.16</b>	
489-0223-000	7021 W STUTH PL	Cheryl Bauer	Residential	30
Alley 20' Concrete Reconstruction		26.69 x 102.45 Lin Ft	= \$ 2,734.39	20.00 \$ 546.88
Reduction Code Longside			<b>Total: \$ 546.88</b>	

**Property Type Summary**

3 Residential



City of West Allis Engineering Department  
Project Details P1009A  
East/West Alley between S. 69 St., W. Stuth Pl., W. Lincoln Ave. & W. Beloit Rd.

**Item Summary**

	Total Quantity	Gross Total	Net Total
Alley 20'			
Concrete Reconstruction			
Residential	195.75 Lin Ft	\$5,224.57	\$2,766.74
		<u>\$5,224.57</u>	<u>\$2,766.74</u>
Grand Totals		\$5,224.57	\$2,766.74





**City of West Allis Engineering Department**  
**Project Details P1010A**  
 East/West Alley between W. Stuth Pl., S. 71 St., W. Lincoln Ave. & W. Stuth Pl.

**Property Assessments**

489-0105-000	7005 W LINCOLN AVE	Cory E. Ballard & Jessica L. Ballard	Residential	10
Alley 20' Concrete Reconstruction		26.69 x 24.68 Lin Ft = \$	658.71 100.00 \$	658.71
			<b>Total: \$</b>	<u>658.71</u>
489-0106-000	7011 W LINCOLN AVE	Albaro V. Alpizar & Araceli C. Arellano	Residential	20
Alley 20' Concrete Reconstruction		26.69 x 40.00 Lin Ft = \$	1,067.60 100.00 \$	1,067.60
			<b>Total: \$</b>	<u>1,067.60</u>
489-0107-000	7015 W LINCOLN AVE	Ryan D. Peterburs & David B. Peterburs	Residential	30
Alley 20' Concrete Reconstruction		26.69 x 40.00 Lin Ft = \$	1,067.60 100.00 \$	1,067.60
			<b>Total: \$</b>	<u>1,067.60</u>
489-0108-000	7021 W LINCOLN AVE	Angela Ausbon	Residential	40
Alley 20' Concrete Reconstruction		26.69 x 40.00 Lin Ft = \$	1,067.60 100.00 \$	1,067.60
			<b>Total: \$</b>	<u>1,067.60</u>
489-0109-000	7027 W LINCOLN AVE	William J. Albrecht	Residential	50
Alley 20' Concrete Reconstruction		26.69 x 40.00 Lin Ft = \$	1,067.60 100.00 \$	1,067.60
			<b>Total: \$</b>	<u>1,067.60</u>
489-0110-000	7031 W LINCOLN AVE	Mark B. Fedran & Barbara Fedran	Residential	60
Alley 20' Concrete Reconstruction		26.69 x 40.00 Lin Ft = \$	1,067.60 100.00 \$	1,067.60
			<b>Total: \$</b>	<u>1,067.60</u>
489-0113-000	7032 W STUTH PL	Ludwig A. Tausz & Kathryn L. Tausz	Residential	70
Alley 20' Concrete Reconstruction		26.69 x 132.24 Lin Ft = \$	3,529.49 67.00 \$	2,364.76
Reduction Code Rectangularized			<b>Total: \$</b>	<u>2,364.76</u>



**City of West Allis Engineering Department**  
**Project Details P1010A**  
 East/West Alley between W. Stuth Pl., S. 71 St., W. Lincoln Ave. & W. Stuth Pl.

489-0112-000	7046 W STUTH PL	Carol A. Golke	Residential	80
Alley 20' Concrete Reconstruction		26.69 x 40.00 Lin Ft	= \$ 1,067.60	100.00 \$ 1,067.60
			Total: \$ 1,067.60	
489-0111-000	7052 W STUTH PL	Yvonne P. Weigel	Residential	90
Alley 20' Concrete Reconstruction		26.69 x 40.00 Lin Ft	= \$ 1,067.60	100.00 \$ 1,067.60
			Total: \$ 1,067.60	

**Property Type Summary**

9 Residential

**Item Summary**

	Total Quantity		Gross Total	Net Total
Alley 20'				
Concrete Reconstruction				
Residential	436.92	Lin Ft	\$11,661.40	\$10,496.67
			<u>\$11,661.40</u>	<u>\$10,496.67</u>
<b>Grand Totals</b>			\$11,661.40	\$10,496.67



**Property Assessments**

476-0444-000	7409-7415 W BECHER ST	Kmiec, Marjan R & Donna Trust	Commercial	10
Alley 14' Concrete Reconstruction		27.72 x 53.21 Lin Ft	= \$ 1,474.98	78.75 \$ 1,161.55
	Reduction Code Depth Factor			
476-0445-000	2109 S 74 ST	Mary T. Grassel	Residential	20
Alley 14' Concrete Reconstruction		22.18 x 60.00 Lin Ft	= \$ 1,330.80	100.00 \$ 1,330.80
			Total: \$ 1,330.80	
476-0446-000	2117 S 74 ST	Karen A. Weis	Residential	30
Alley 14' Concrete Reconstruction		22.18 x 30.00 Lin Ft	= \$ 665.40	100.00 \$ 665.40
			Total: \$ 665.40	
476-0447-000	2119 S 74 ST	Michael S. Kimmmler	Residential	40
Alley 14' Concrete Reconstruction		22.18 x 30.00 Lin Ft	= \$ 665.40	100.00 \$ 665.40
			Total: \$ 665.40	
476-0448-000	2123 S 74 ST	Thomas Ksobiech & Christine Ksobiech	Residential	50
Alley 14' Concrete Reconstruction		22.18 x 30.00 Lin Ft	= \$ 665.40	100.00 \$ 665.40
			Total: \$ 665.40	
476-0449-000	2129 S 74 ST	Larry Seese & Jacqueline Seese	Residential	60
Alley 14' Concrete Reconstruction		22.18 x 30.00 Lin Ft	= \$ 665.40	100.00 \$ 665.40
			Total: \$ 665.40	
476-0450-000	2131-2133 S 74 ST	Michael Moser	Residential	70
Alley 14' Concrete Reconstruction		22.18 x 30.00 Lin Ft	= \$ 665.40	100.00 \$ 665.40
			Total: \$ 665.40	



**City of West Allis Engineering Department**  
**Project Details P1011A**  
 North/South Alley between S. 74 St., S. 75 St., W. Beecher St. & W. Grant St.

476-0451-000	2135 S 74 ST								
	Alley 14' Concrete Reconstruction								
		Carla F. Walker & James L. Walker							Residential 80
		22.18 x 30.00 Lin Ft	=	\$	665.40	100.00	\$	665.40	
								<u>Total: \$ 665.40</u>	
476-0452-000	2141 S 74 ST								
	Alley 14' Concrete Reconstruction								
		James L. Walker Sr & Carla F. Walker							Residential 90
		22.18 x 30.00 Lin Ft	=	\$	665.40	100.00	\$	665.40	
								<u>Total: \$ 665.40</u>	
476-0453-000	2143 S 74 ST								
	Alley 14' Concrete Reconstruction								
		Christen Casarez & Mark A. Bloom							Residential 100
		22.18 x 30.00 Lin Ft	=	\$	665.40	100.00	\$	665.40	
								<u>Total: \$ 665.40</u>	
476-0454-000	2147 S 74 ST								
	Alley 14' Concrete Reconstruction								
		Gerald L. Welch							Residential 110
		22.18 x 40.00 Lin Ft	=	\$	887.20	100.00	\$	887.20	
								<u>Total: \$ 887.20</u>	
476-0455-000	2153 S 74 ST								
	Alley 14' Concrete Reconstruction								
		Christopher Lemay & Dana Lemay							Residential 120
		22.18 x 35.00 Lin Ft	=	\$	776.30	100.00	\$	776.30	
								<u>Total: \$ 776.30</u>	
476-0456-000	2159 S 74 ST								
	Alley 14' Concrete Reconstruction								
		Ray Properties LLC							Residential 130
		22.18 x 35.00 Lin Ft	=	\$	776.30	100.00	\$	776.30	
								<u>Total: \$ 776.30</u>	
476-0457-000	2163 S 74 ST								
	Alley 14' Concrete Reconstruction								
		Jerome T. Maas & Sharlyn A. Maas							Residential 140
		22.18 x 40.00 Lin Ft	=	\$	887.20	100.00	\$	887.20	
								<u>Total: \$ 887.20</u>	
476-0458-000	2167 S 74 ST								
	Alley 14' Concrete Reconstruction								
		Christopher P. Gulczynski & Beth A. Gulczynski							Residential 150
		22.18 x 30.00 Lin Ft	=	\$	665.40	100.00	\$	665.40	
								<u>Total: \$ 665.40</u>	







City of West Allis Engineering Department  
 Project Details P1011A  
 North/South Alley between S. 74 St., S. 75 St., W. Becher St. & W. Grant St.

**Item Summary**

	Total Quantity		Gross Total	Net Total
<b>Alley 14'</b>				
<b>Concrete Reconstruction</b>				
Commercial	123.21	Lin Ft	\$3,415.38	\$3,101.95
Residential	1,020.00	Lin Ft	\$22,623.60	\$22,623.60
			\$26,038.98	\$25,725.55
<b>Grand Totals</b>			<b>\$26,038.98</b>	<b>\$25,725.55</b>



**City of West Allis Engineering Department**  
**Project Details P1012A**  
 North/South Alley between S. 85 St., S. 86 St., W. Washington St. & W. Greenfield Ave.

**Property Assessments**

442-0674-000	1103 S 85 ST & 8507 W WASHINGTON ST	Walter Scotty Jr					Residential	10
	Alley 20' Concrete Reconstruction	26.69	x	36.92	Lin Ft	=	\$ 985.39	100.00
	Wall Modular Block or Timber	18.13	x	80.00	Sq Ft	=	\$ 1,450.40	100.00
							<b>Total:</b>	<b>\$ 2,435.79</b>
442-0675-000	1107 S 85 ST	Amelia T. Wilhelm					Residential	20
	Alley 20' Concrete Reconstruction	26.69	x	39.00	Lin Ft	=	\$ 1,040.91	100.00
							<b>Total:</b>	<b>\$ 1,040.91</b>
442-0676-000	1111 S 85 ST	Everette M. Johnson					Residential	30
	Alley 20' Concrete Reconstruction	26.69	x	39.00	Lin Ft	=	\$ 1,040.91	100.00
							<b>Total:</b>	<b>\$ 1,040.91</b>
442-0677-000	1117 S 85 ST	Buddy L. Williams					Residential	40
	Alley 20' Concrete Reconstruction	26.69	x	39.00	Lin Ft	=	\$ 1,040.91	100.00
							<b>Total:</b>	<b>\$ 1,040.91</b>
442-0678-000	1123 S 85 ST	Deborah Engel					Residential	50
	Alley 20' Concrete Reconstruction	26.69	x	39.00	Lin Ft	=	\$ 1,040.91	100.00
							<b>Total:</b>	<b>\$ 1,040.91</b>
442-0679-000	1127 S 85 ST	Richard J. Olson					Residential	60
	Alley 20' Concrete Reconstruction	26.69	x	39.00	Lin Ft	=	\$ 1,040.91	100.00
							<b>Total:</b>	<b>\$ 1,040.91</b>
442-0680-000	1133 S 85 ST	Gary C. Henning					Residential	70
	Alley 20' Concrete Reconstruction	26.69	x	39.00	Lin Ft	=	\$ 1,040.91	100.00
							<b>Total:</b>	<b>\$ 1,040.91</b>











**City of West Allis Engineering Department**  
**Project Details P1012A**  
 North/South Alley between S. 85 St., S. 86 St., W. Washington St. & W. Greenfield Ave.

**Item Summary**

	Total Quantity	Gross Total	Net Total
Alley 20'			
Concrete Reconstruction			
Residential	951.85	\$25,404.87	\$25,291.17
		\$25,404.87	\$25,291.17
Wall			
Modular Block or Timber			
Residential	80.00	\$1,450.40	\$1,450.40
		\$1,450.40	\$1,450.40
Grand Totals		\$26,855.27	\$26,741.57





City of West Allis Engineering Department  
 Project Details P1013A  
 North/South Alley between S. 73 St., S. 74 St., W. Washington St. & W. Madison St

440-0554-000	1141 S 73 ST		
Alley 14' Concrete Reconstruction		Kathleen J. Gallun	Residential
		22.18 x 40.00 Lin Ft = \$	887.20 100.00 \$ 887.20
			Total: \$ 887.20
440-0553-000	1203-1205 S 73 ST		
Alley 14' Concrete Reconstruction		Sonja R. Juric	Residential
		22.18 x 40.00 Lin Ft = \$	887.20 100.00 \$ 887.20
			Total: \$ 887.20
440-0552-000	1209 S 73 ST		
Alley 14' Concrete Reconstruction		Deena M. Wojtkowski	Residential
		22.18 x 40.00 Lin Ft = \$	887.20 100.00 \$ 887.20
			Total: \$ 887.20
440-0551-000	1213 S 73 ST		
Alley 14' Concrete Reconstruction		Mary M. Schroeder & Gerald J. Schroeder	Residential
		22.18 x 30.00 Lin Ft = \$	665.40 100.00 \$ 665.40
			Total: \$ 665.40
440-0550-000	1217-1219 S 73 ST		
Alley 14' Concrete Reconstruction		Garnier Investments LLC	Residential
		22.18 x 30.00 Lin Ft = \$	665.40 100.00 \$ 665.40
			Total: \$ 665.40
440-0549-000	1221 S 73 ST		
Alley 14' Concrete Reconstruction		Erik J. Schwanz & Penny M. Schwanz	Residential
		22.18 x 40.00 Lin Ft = \$	887.20 100.00 \$ 887.20
			Total: \$ 887.20
440-0548-000	1227 S 73 ST		
Alley 14' Concrete Reconstruction		Paul S. Kaiser & Lynn M. Kaiser	Residential
Wall Modular Block or Timber		22.18 x 40.00 Lin Ft = \$	887.20 100.00 \$ 887.20
		18.13 x 42.00 Sq Ft = \$	761.46 100.00 \$ 761.46
			Total: \$ 1,648.66









**City of West Allis Engineering Department**  
**Project Details P1013A**  
 North/South Alley between S. 73 St., S. 74 St., W. Washington St. & W. Madison St

440-0542-000	1222-1224 S 74 ST	Charles Dadalian	Residential	320
Alley 14' Concrete Reconstruction		22.18 x 36.00 Lin Ft = \$	798.48 100.00 \$	798.48
			<u>Total: \$</u>	<u>798.48</u>
440-0543-000	1226-1228 S 74 ST	Mary Alice Mc Bride	Residential	330
Alley 14' Concrete Reconstruction		22.18 x 36.00 Lin Ft = \$	798.48 100.00 \$	798.48
			<u>Total: \$</u>	<u>798.48</u>
440-0544-000	1232 S 74 ST	Paul M. Schuessler & Meg D. Schuessler	Residential	340
Alley 14' Concrete Reconstruction		22.18 x 36.00 Lin Ft = \$	798.48 100.00 \$	798.48
			<u>Total: \$</u>	<u>798.48</u>
440-0545-000	1236 S 74 ST	Dolores A. Soik	Residential	350
Alley 14' Concrete Reconstruction		22.18 x 30.00 Lin Ft = \$	665.40 100.00 \$	665.40
			<u>Total: \$</u>	<u>665.40</u>

**Property Type Summary**

35 Residential



**City of West Allis Engineering Department**  
**Project Details P1013A**  
 North/South Alley between S. 73 St., S. 74 St., W. Washington St. & W. Madison St

**Item Summary**

	Total Quantity		Gross Total	Net Total
Alley 14'				
Concrete Reconstruction				
Residential	1,256.12	Lin Ft	\$27,860.75	\$27,860.75
Wall			\$27,860.75	\$27,860.75
Modular Block or Timber				
Residential	63.25	Sq Ft	\$1,146.72	\$1,146.72
			\$1,146.72	\$1,146.72
<b>Grand Totals</b>			<b>\$29,007.47</b>	<b>\$29,007.47</b>





**City of West Allis Engineering Department**  
**Project Details P1014A**  
 East/West Alley between S. 73 St., S. 73 St., W. Madison Ave. & W. Greenfield Ave.

440-0347-000	7224-7226 W GREENFIELD AVE	Donald L. Minch & Dorothy G. Minch	Commercial	60
Alley 20' Concrete Reconstruction		33.36 x 60.00 Lin Ft =	\$ 2,001.60	100.00 \$ 2,001.60
			<b>Total: \$ 2,001.60</b>	
440-0346-000	7232-7236 W GREENFIELD AVE	A2Z Real Estate LLC	Commercial	70
Alley 20' Concrete Reconstruction		33.36 x 30.00 Lin Ft =	\$ 1,000.80	100.00 \$ 1,000.80
			<b>Total: \$ 1,000.80</b>	
440-0345-001	7240-7246 W GREENFIELD AVE	Scott Sitowski & Cynthia Sobczak	Commercial	80
Alley 20' Concrete Reconstruction		33.36 x 60.00 Lin Ft =	\$ 2,001.60	100.00 \$ 2,001.60
			<b>Total: \$ 2,001.60</b>	

**Property Type Summary**

6	Commercial
2	Residential



**City of West Allis Engineering Department**  
**Project Details P1014A**  
 East/West Alley between S. 73 St., S. 73 St., W. Madison Ave. & W. Greenfield Ave.

**Item Summary**

	Total Quantity		Gross Total	Net Total
<b>Alley 14'</b>				
Concrete Reconstruction				
Residential	120.00	Lin Ft	<u>\$2,661.60</u>	<u>\$0.00</u>
			\$2,661.60	\$0.00
<b>Alley 20'</b>				
Concrete Reconstruction				
Commercial	254.00	Lin Ft	<u>\$8,473.44</u>	<u>\$8,473.44</u>
Residential	240.00	Lin Ft	<u>\$6,405.60</u>	<u>\$0.00</u>
			\$14,879.04	\$8,473.44
<b>Grand Totals</b>			<u>\$17,540.64</u>	<u>\$8,473.44</u>



**City of West Allis Engineering Department**  
**Project Details P1015A**  
 East/West Alley between S. 105 St., S. 106 St., W. Oklahoma Ave. & W. Euclid Ave.

**Property Assessments**

524-9963-000	3107-3109 S 105 ST & 10505 W OKLAHOMA AVE	Donna M. Watson	26.69	x	51.00 Lin Ft	=	\$	1,361.19	100.00	\$ 1,361.19	10
	Alley 20' Concrete Reconstruction										
										<u>Total: \$ 1,361.19</u>	
524-9964-000	10509-10511 W OKLAHOMA AVE	Arthur A. Flater Jr	26.69	x	50.00 Lin Ft	=	\$	1,334.50	100.00	\$ 1,334.50	20
	Alley 20' Concrete Reconstruction										
										<u>Total: \$ 1,334.50</u>	
524-9965-000	10515-10519 W OKLAHOMA AVE	Gregory D. Lucey	26.69	x	50.00 Lin Ft	=	\$	1,334.50	100.00	\$ 1,334.50	30
	Alley 20' Concrete Reconstruction										
										<u>Total: \$ 1,334.50</u>	
524-9966-000	10523-10525 W OKLAHOMA AVE	Mark A. Narvaez & Brenda L. Narvaez	26.69	x	50.00 Lin Ft	=	\$	1,334.50	100.00	\$ 1,334.50	40
	Alley 20' Concrete Reconstruction										
										<u>Total: \$ 1,334.50</u>	
524-9967-000	10531 W OKLAHOMA AVE	Gerald C. Noben	26.69	x	20.00 Lin Ft	=	\$	533.80	100.00	\$ 533.80	50
	Alley 20' Concrete Reconstruction										
										<u>Total: \$ 533.80</u>	
524-9962-001	3131 S 105 ST	David John Westley	26.69	x	60.00 Lin Ft	=	\$	1,601.40	100.00	\$ 1,601.40	60
	Alley 20' Concrete Reconstruction										
										<u>Total: \$ 1,601.40</u>	
524-9969-001	3128 S 106 ST	David A. Hamilton & Cheryl L. Hamilton	26.69	x	50.00 Lin Ft	=	\$	1,334.50	100.00	\$ 1,334.50	70
	Alley 20' Concrete Reconstruction										
										<u>Total: \$ 1,334.50</u>	

**Property Type Summary**

7 Residential



City of West Allis Engineering Department  
 Project Details P1015A

East/West Alley between S. 105 St., S. 106 St., W. Oklahoma Ave. & W. Euclid Ave.

**Item Summary**

	Total Quantity	Gross Total	Net Total
Alley 20'			
Concrete Reconstruction			
Residential	331.00 Lin Ft	\$8,834.39	\$8,834.39
		\$8,834.39	\$8,834.39
Grand Totals		\$8,834.39	\$8,834.39