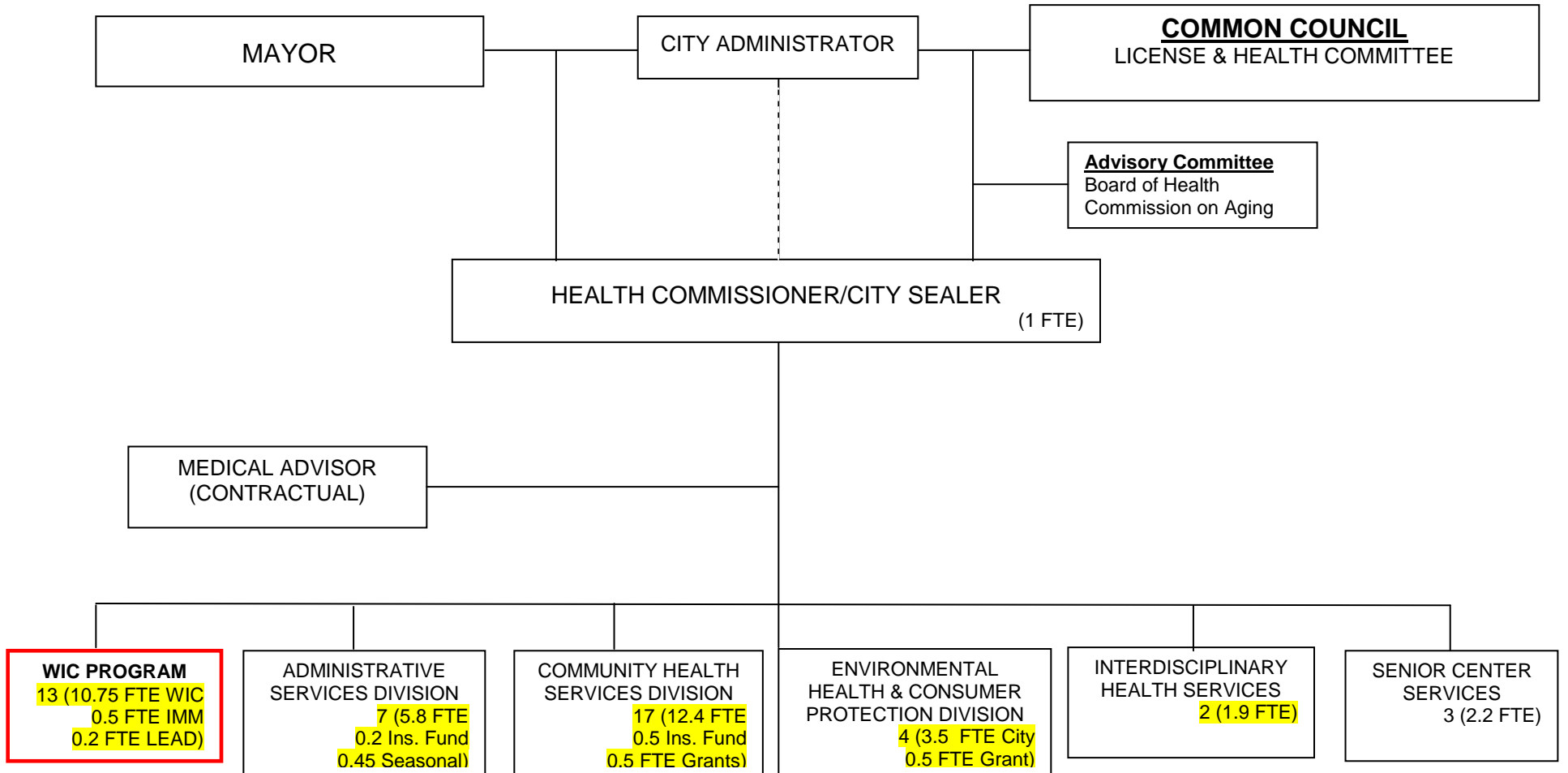
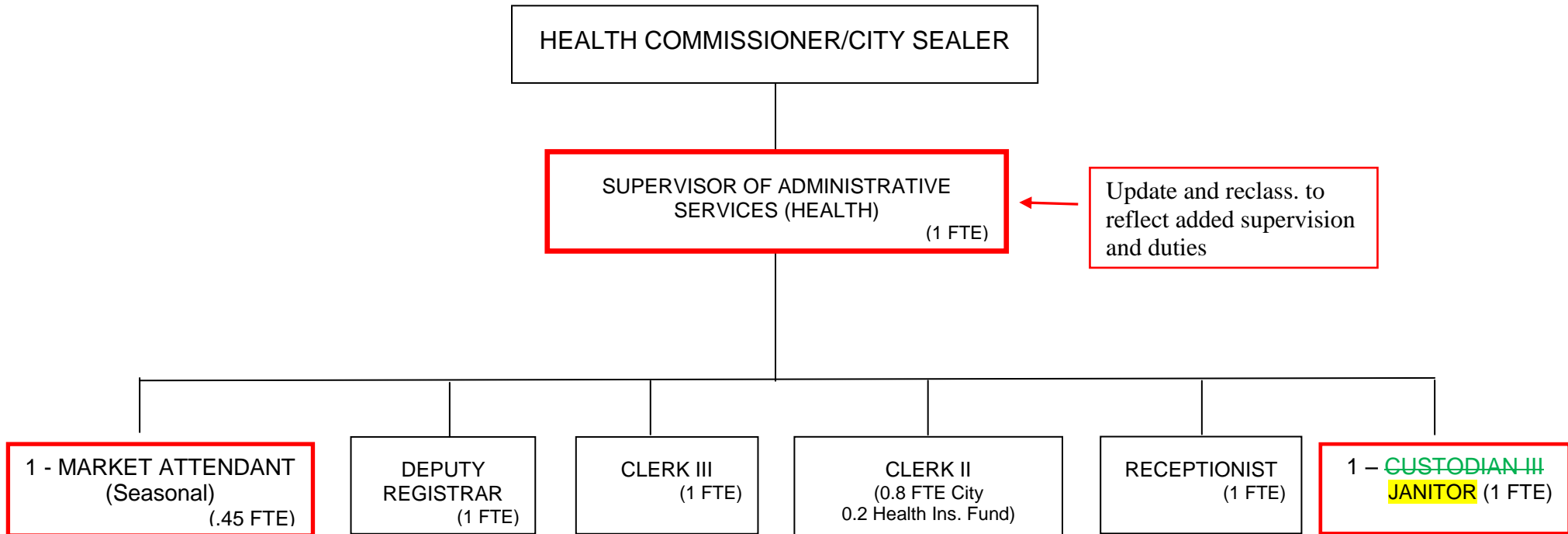


# ORGANIZATIONAL CHART HEALTH



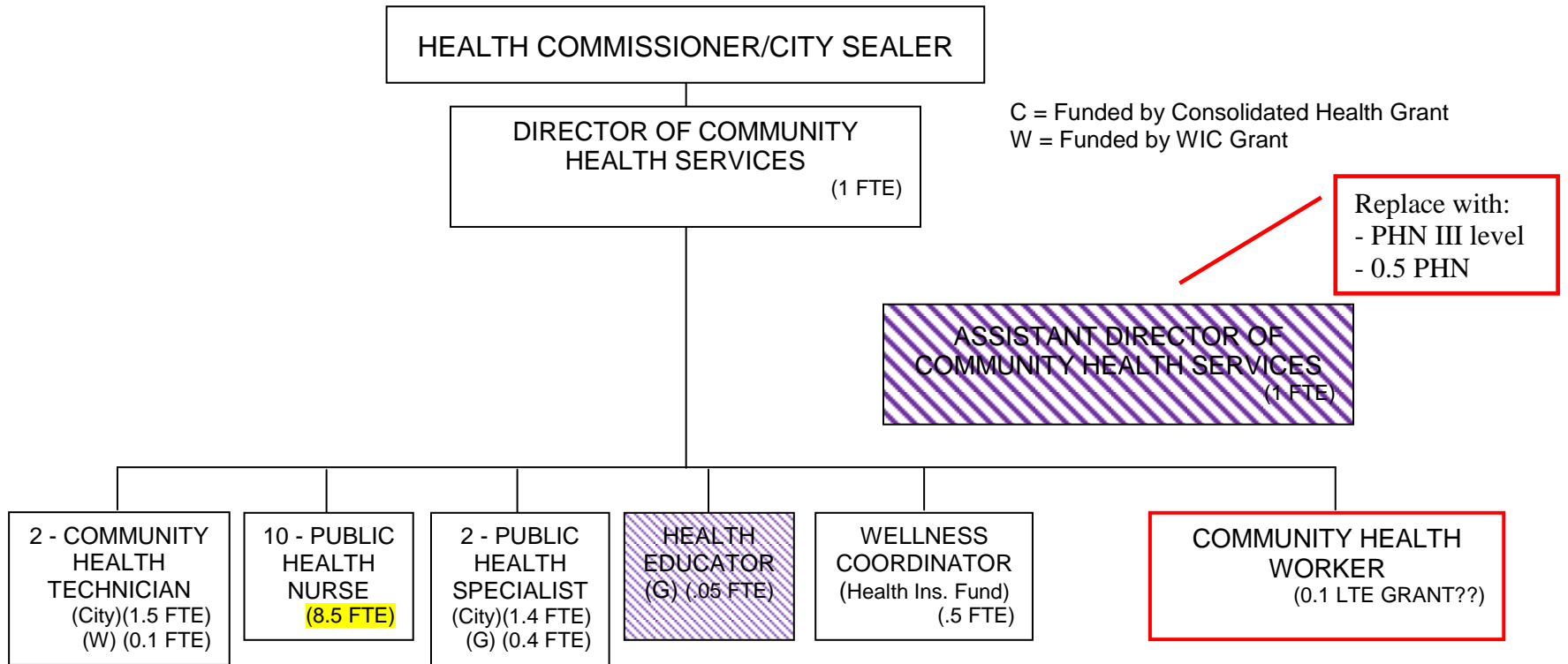
TOTAL POSITIONS: 47 (26.8 City FTE  
12.45 FTE Grants  
0.7 Ins. Fund  
0.45 Seasonal)

**ORGANIZATIONAL CHART  
HEALTH  
HEALTH ADMINISTRATIVE SERVICES**



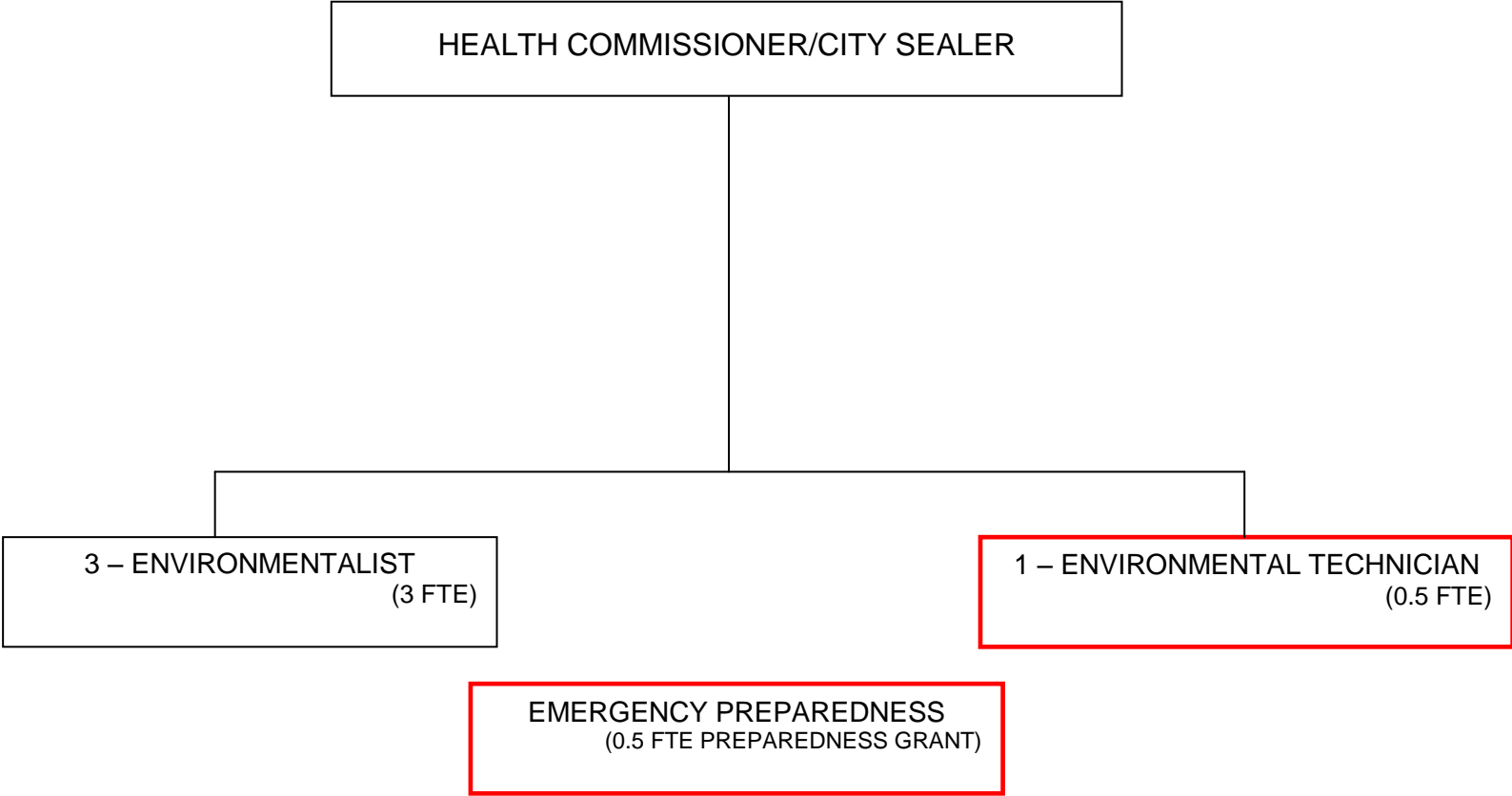
**TOTAL POSITIONS: 7 (5.8 City FTE, 0.2 Ins. Fund, 0.45 Seasonal)**

**ORGANIZATIONAL CHART  
HEALTH  
COMMUNITY HEALTH SERVICES**



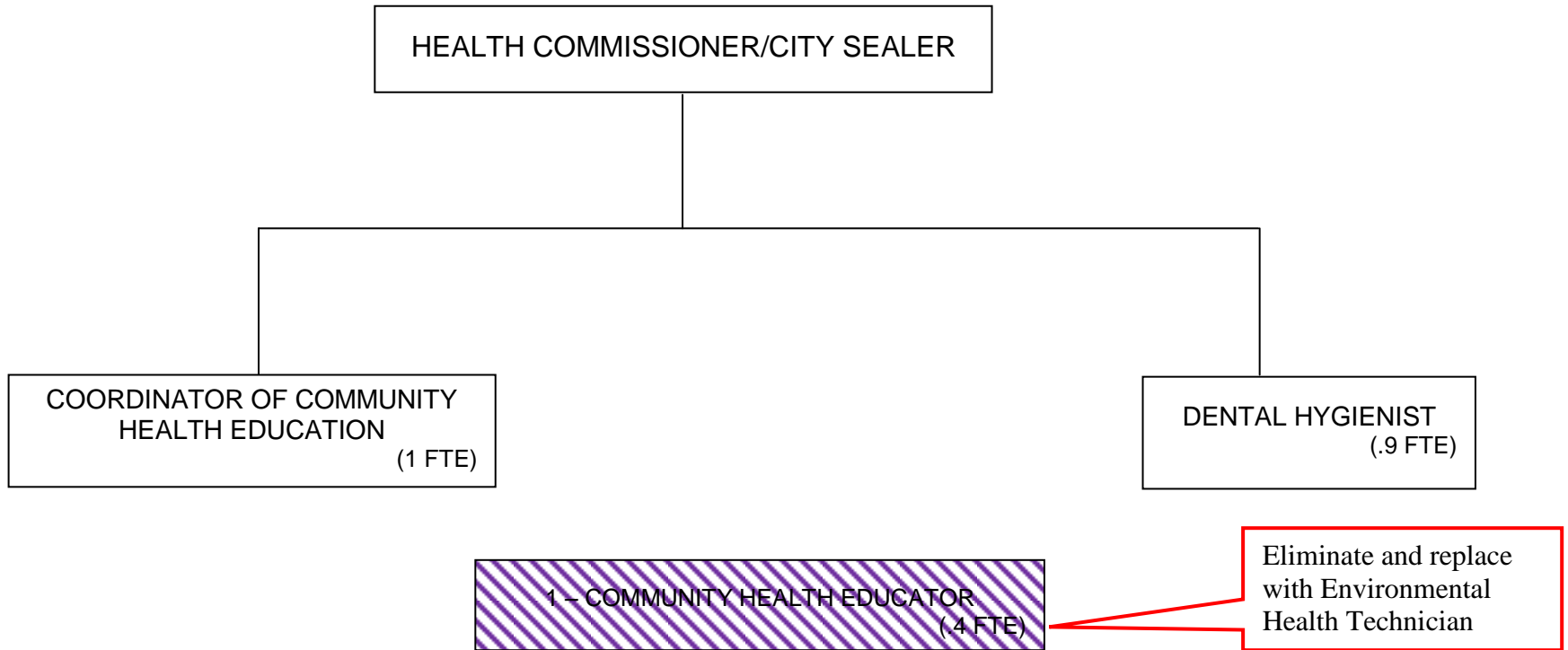
TOTAL POSITIONS: 17 (12.4 City FTE  
0.5 Insurance Fund  
0.5 Grant Funds)

**ORGANIZATIONAL CHART  
HEALTH  
ENVIRONMENTAL HEALTH & CONSUMER PROTECTION**



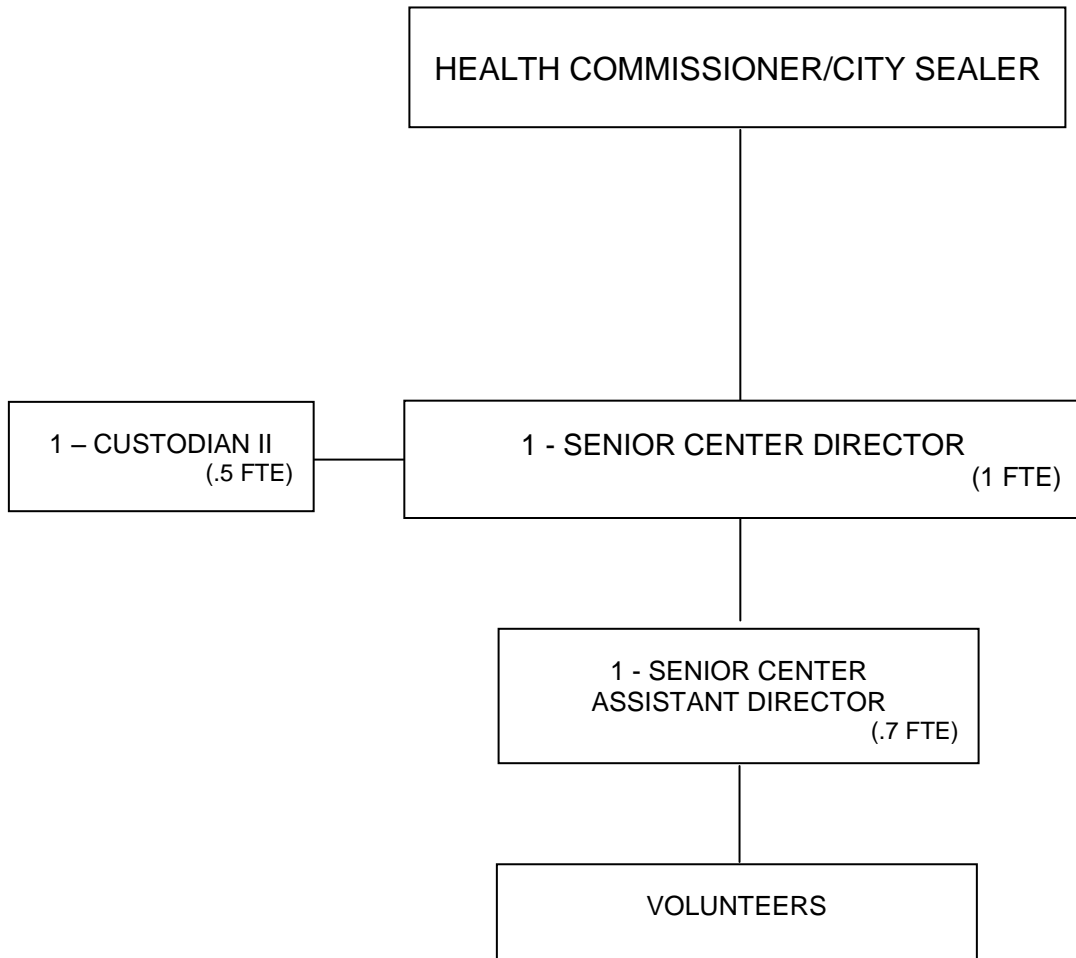
TOTAL POSITIONS: 4 (3.5 City FTE  
0.5 FTE GRANT)

**ORGANIZATIONAL CHART  
HEALTH  
INTERDISCIPLINARY HEALTH SERVICES**



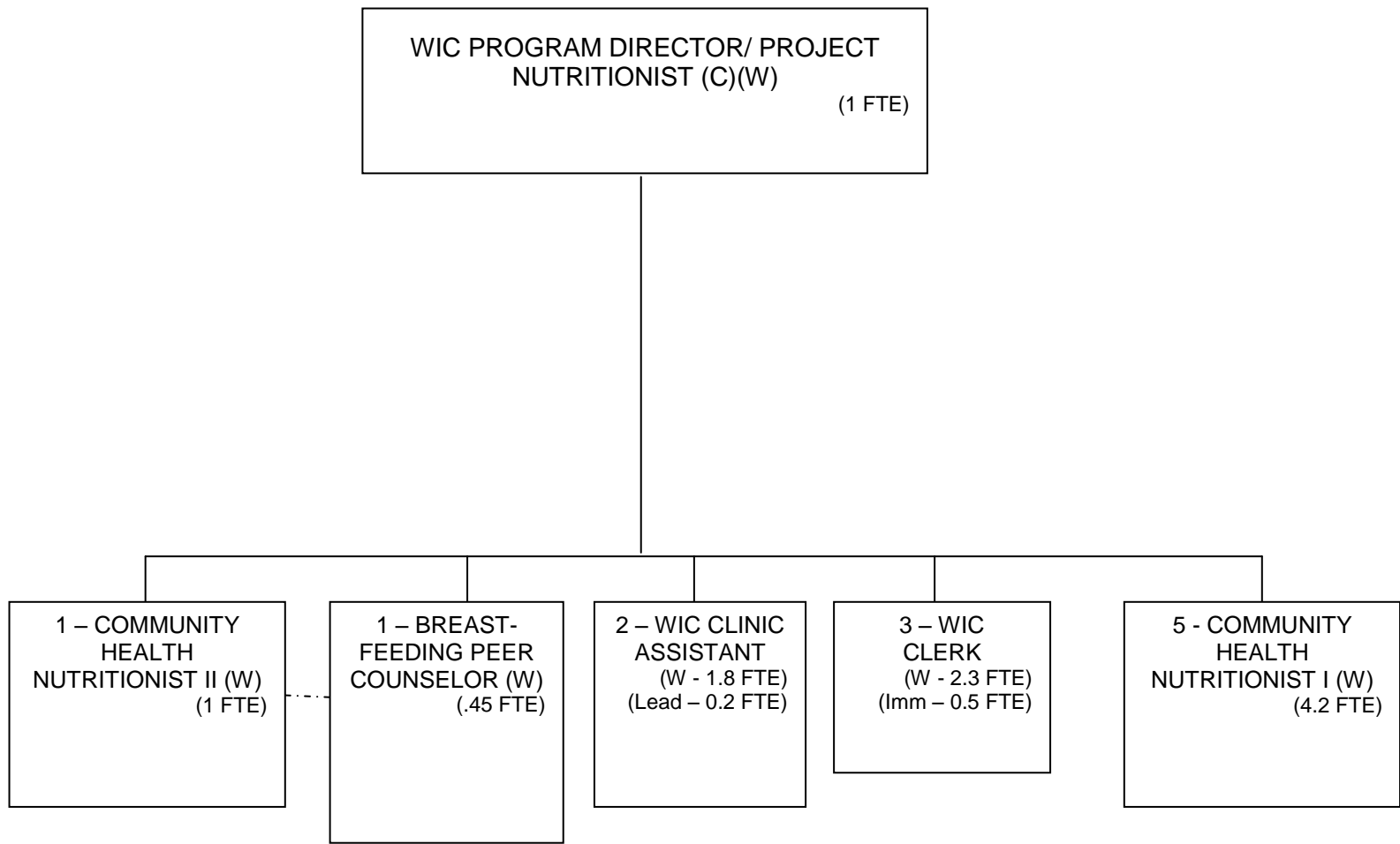
TOTAL POSITIONS: 2 (1.9 City FTE)

**ORGANIZATIONAL CHART  
HEALTH  
SENIOR CENTER**



TOTAL POSITIONS: 3 (2.2 City FTE)

**ORGANIZATIONAL CHART**  
**HEALTH**  
**WOMEN, INFANTS AND CHILDREN (WIC) PROGRAM**



TOTAL POSITIONS: 13 (10.75 FTE WIC GRANTS  
0.5 FTE IMM GRANT  
0.2 FTE LEAD GRANT)