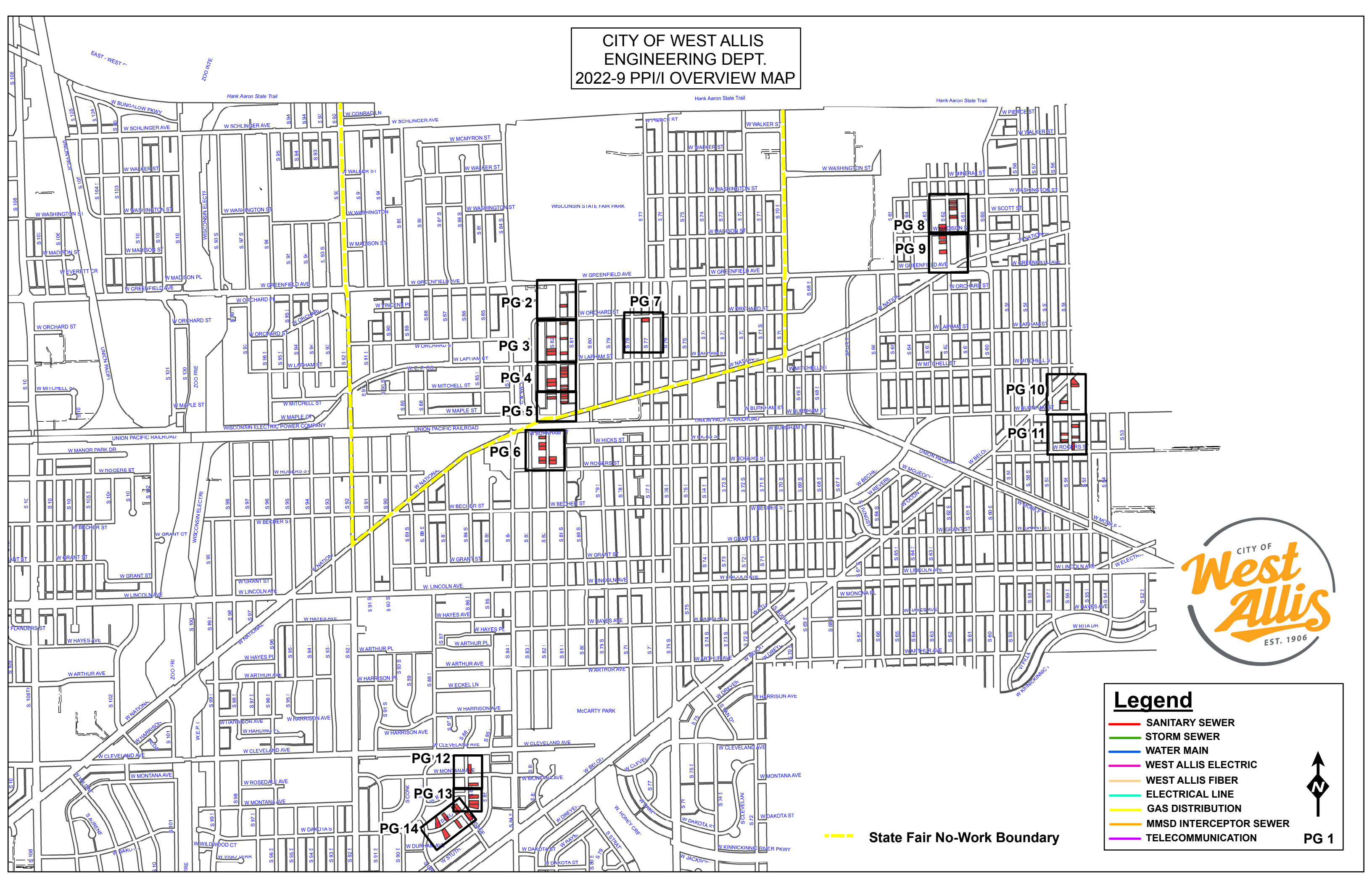


CITY OF WEST ALLIS  
ENGINEERING DEPT.  
2022-9 PPI/ OVERVIEW MAP

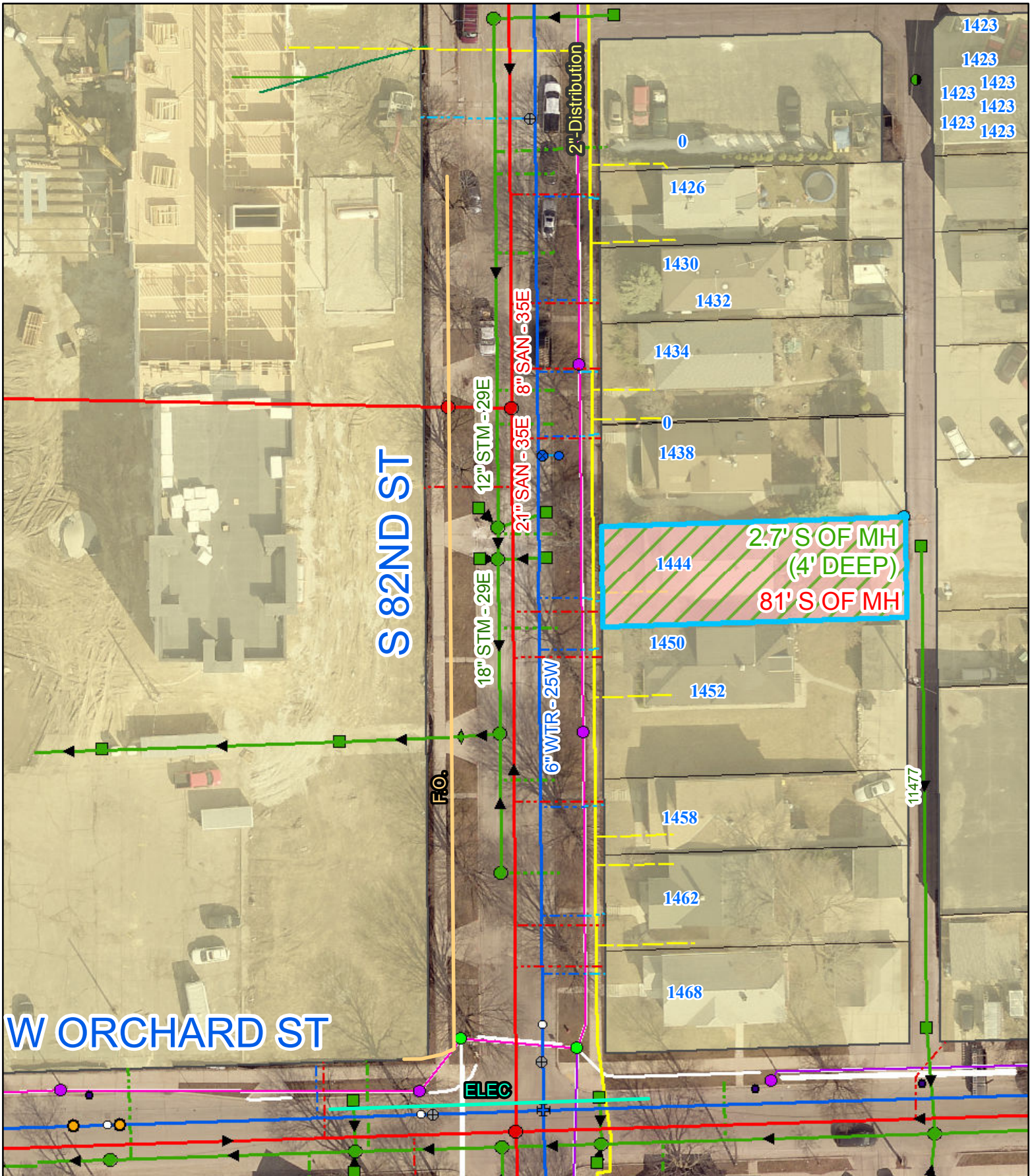


**Legend**

- SANITARY SEWER
- STORM SEWER
- WATER MAIN
- WEST ALLIS ELECTRIC
- WEST ALLIS FIBER
- ELECTRICAL LINE
- GAS DISTRIBUTION
- MMSD INTERCEPTOR SEWER
- TELECOMMUNICATION




State Fair No-Work Boundary



**LEGEND**

- Lead Water Service Replacement
- Sump Pump/Storm Lateral Installation
- Sanitary Lateral Rehabilitation

PG 2  
 S 82ND ST:  
 W GREENFIELD AVENUE TO  
 W ORCHARD STREET



2.7' S OF MH  
 (4' DEEP)  
 81' S OF MH

**W ORCHARD ST**

**S 82ND ST**

FO.

ELEC

11477

1423  
 1423  
 1423  
 1423  
 1423

1426

1430

1432

1434

1438

1444

1450

1452

1458

1462

1468




2"-Distribution

12" STM-29E  
 21" SAN-35E  
 8" SAN-35E

18" STM-29E

6" WTR-25W

**LEGEND**

-  Lead Water Service Replacement
-  Sump Pump/Storm Lateral Installation
-  Sanitary Lateral Rehabilitation

**W ORCHARD ST** 1515

2" Distribution

83' N OF MH

**S 82ND ST**

142.5' S OF MH

143.1' N OF MH

**W LAPHAM ST** 1583

12" STM-21E

8" SAN-35W

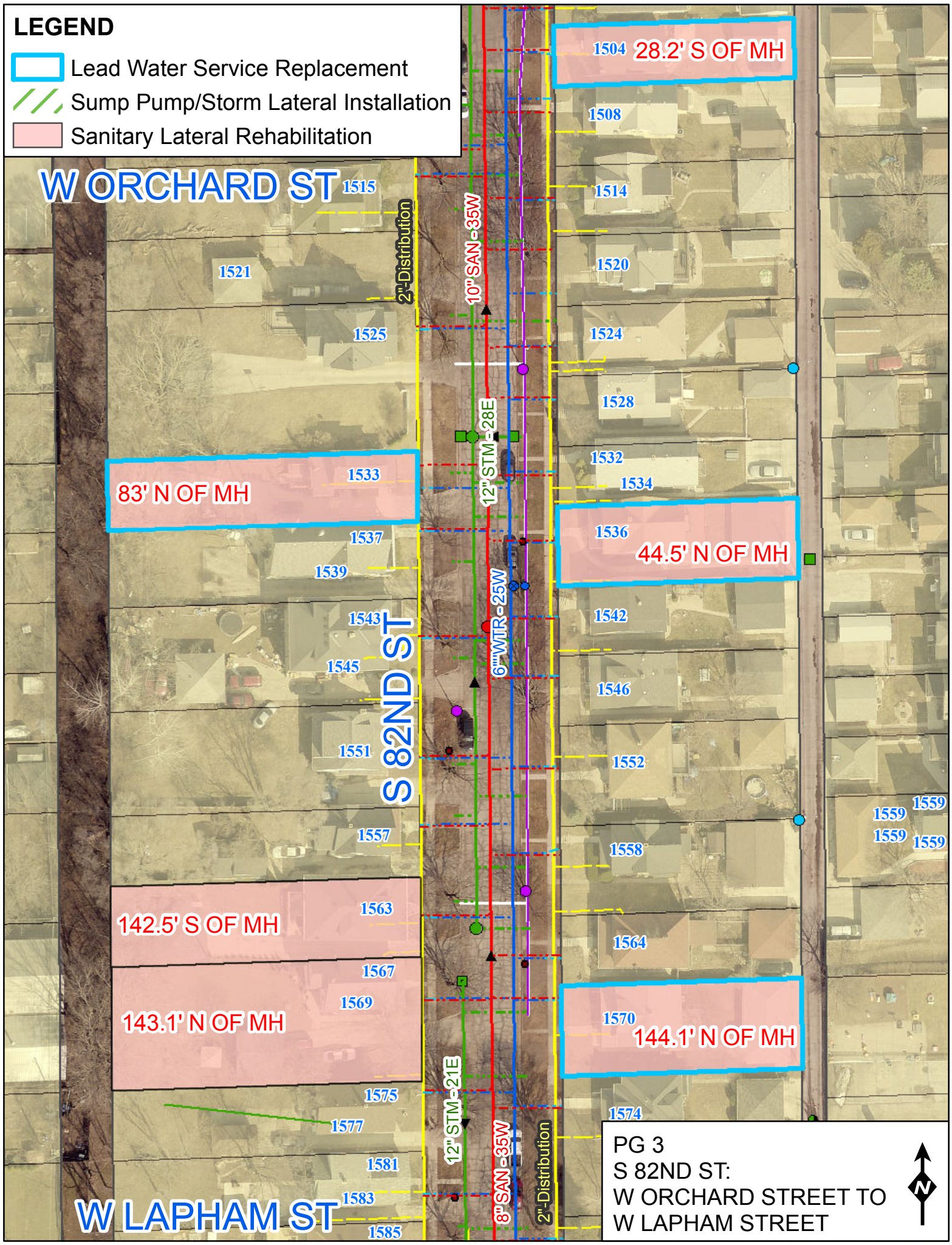
2" Distribution

1504 28.2' S OF MH

44.5' N OF MH

144.1' N OF MH

PG 3  
S 82ND ST:  
W ORCHARD STREET TO  
W LAPHAM STREET



W LAPHAM ST<sup>206</sup>

1585

1586

FO.

ELEC

TELE

FO.

4" Distribution

1603

0

1609

1606

121.7' S OF MH

1617

1610

148.7' S OF MH

S 82ND ST

1612

1625

1614

184.4' S OF MH

1627

1622

143.9' N OF MH

1629

18" STM-29E

8" SAN-85E

6" WTR-26W

1630

92.4' N OF MH

1633

16.3' N OF MH  
(4' DEEP)

1638

1640

4' N OF MH  
(4' DEEP)

1641

22.4' N OF MH

1643

1646




19' N OF MH  
(4' DEEP)

1648

1649

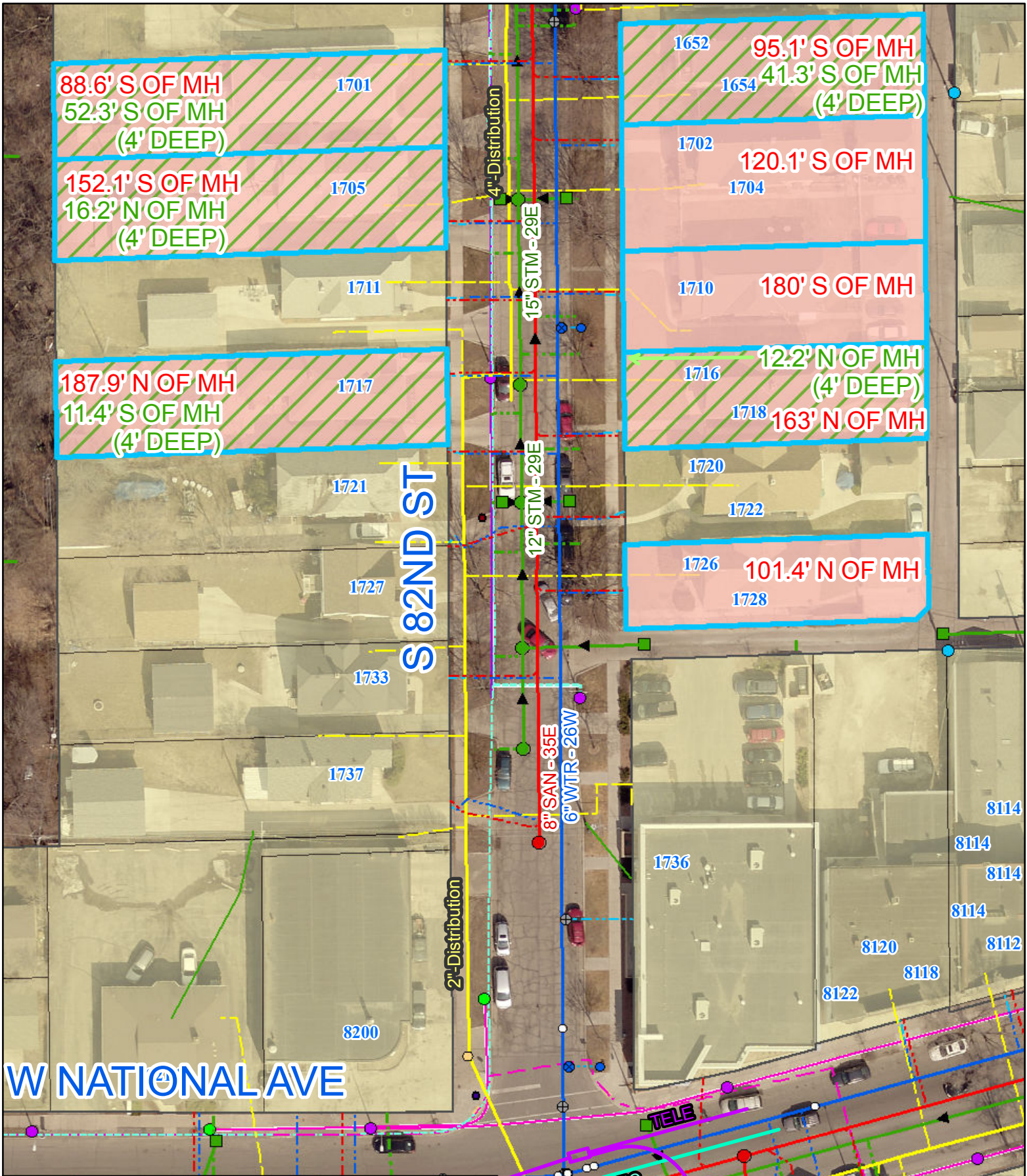
1650

**LEGEND**

-  Lead Water Service Replacement
-  Sump Pump/Storm Lateral Installation
-  Sanitary Lateral Rehabilitation

PG 4  
 S 82ND ST:  
 W NATIONAL AVENUE TO  
 W LAPHAM STREET



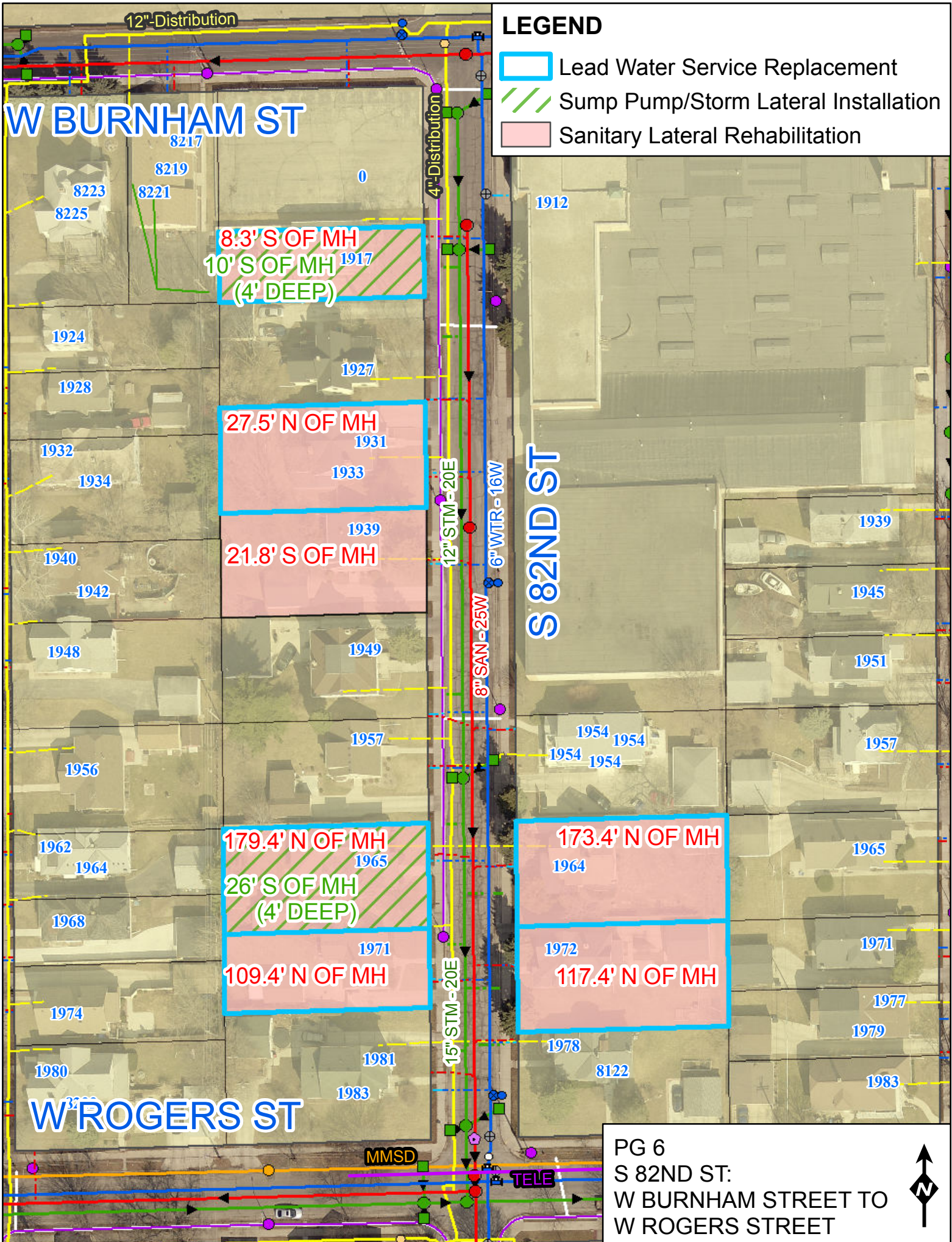


**LEGEND**

- Lead Water Service Replacement
- Sump Pump/Storm Lateral Installation
- Sanitary Lateral Rehabilitation

PG 5  
 S 82ND ST:  
 W NATIONAL AVENUE TO  
 W LAPHAM STREET





**LEGEND**

- Lead Water Service Replacement
- Sump Pump/Storm Lateral Installation
- Sanitary Lateral Rehabilitation

**W BURNHAM ST**

**S 82ND ST**

**W ROGERS ST**

8.3' S OF MH  
10' S OF MH  
(4' DEEP)

27.5' N OF MH  
1931  
1933

21.8' S OF MH  
1939

179.4' N OF MH  
26' S OF MH  
(4' DEEP)  
1965

109.4' N OF MH  
1971

173.4' N OF MH  
1964  
1972  
117.4' N OF MH

PG 6  
S 82ND ST:  
W BURNHAM STREET TO  
W ROGERS STREET



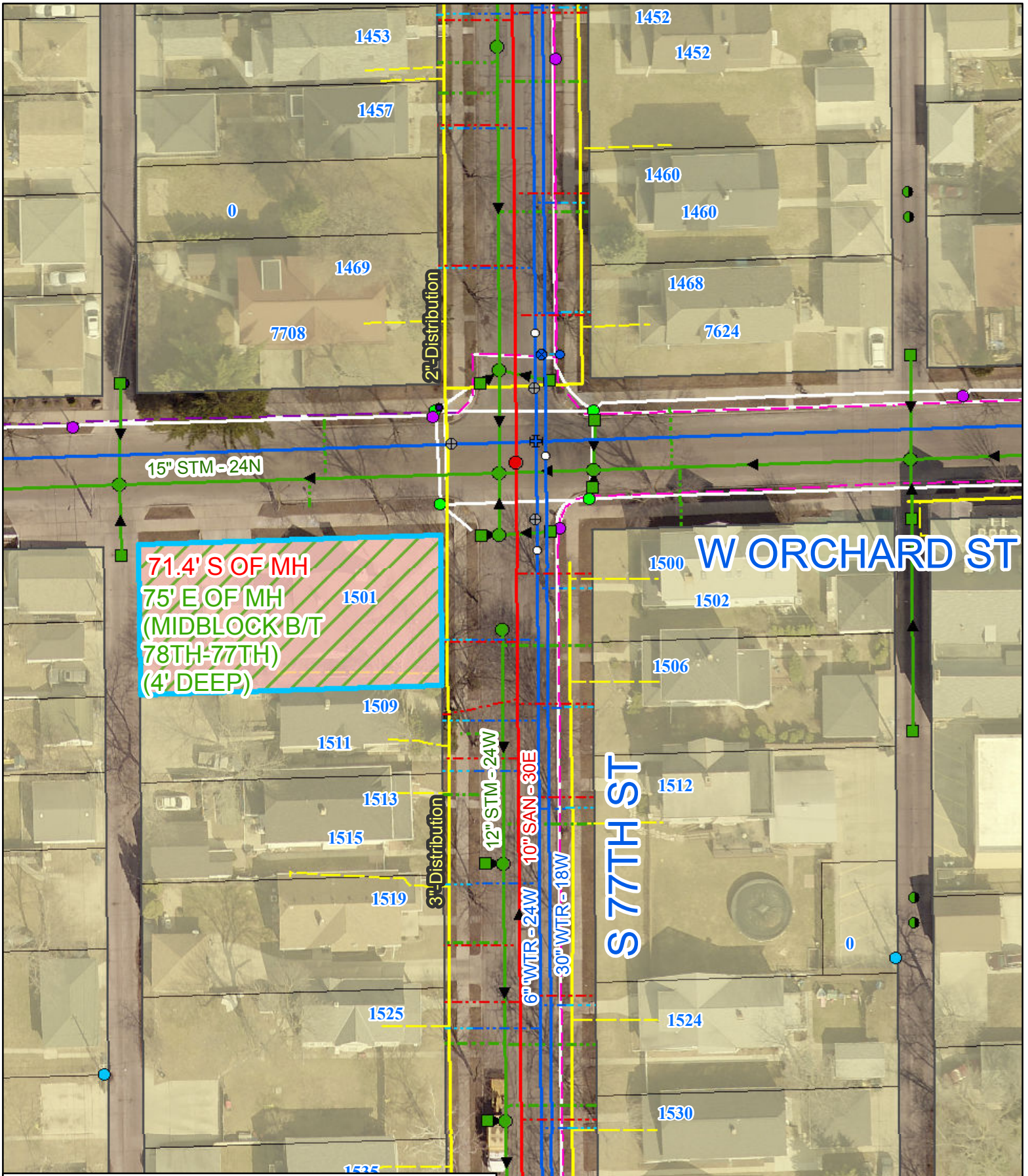
MMSD

TELE

12' Distribution  
 4' Distribution  
 12' STM-20E  
 6" WTR-16W  
 8" SAN-25W  
 15' STM-20E

8217  
 8219  
 8223  
 8225  
 8221  
 1924  
 1928  
 1932  
 1934  
 1940  
 1942  
 1948  
 1956  
 1962  
 1964  
 1968  
 1974  
 1980  
 1981  
 1983

1912  
 1917  
 1927  
 1931  
 1933  
 1939  
 1949  
 1957  
 1954 1954  
 1954 1954  
 1957  
 1965  
 1964  
 1971  
 1977  
 1979  
 1978  
 8122  
 1983



71.4' S OF MH  
 75' E OF MH  
 (MIDBLOCK B/T  
 78TH-77TH)  
 (4' DEEP)

**LEGEND**

- Lead Water Service Replacement
- Sump Pump/Storm Lateral Installation
- Sanitary Lateral Rehabilitation

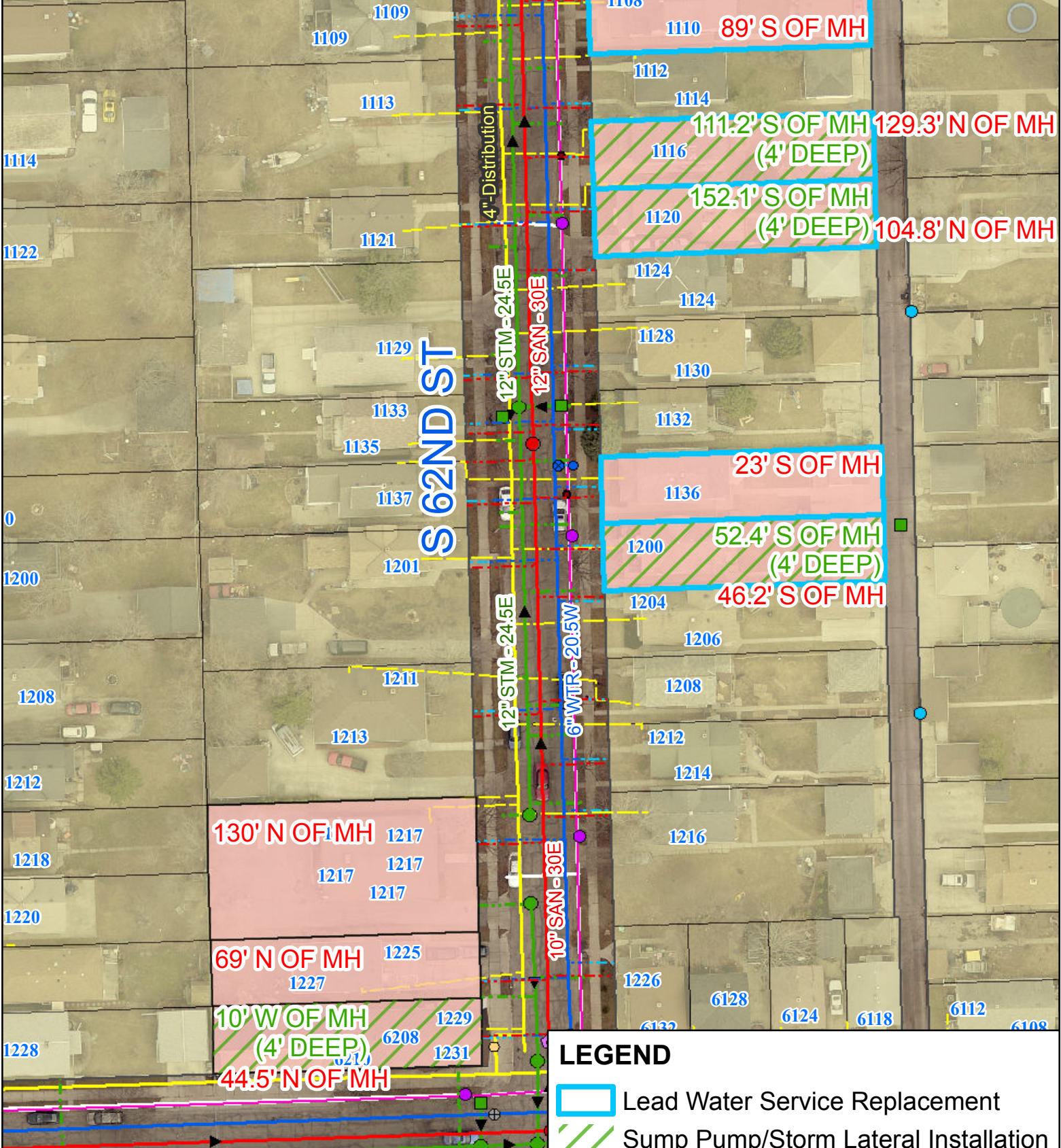
PG 7  
 S 77TH ST:  
 SW CORNER AT  
 W ORCHARD STREET



PG 8  
 S 62ND ST:  
 W WASHINGTON STREET TO  
 W MADISON STREET



**W WASHINGTON ST**

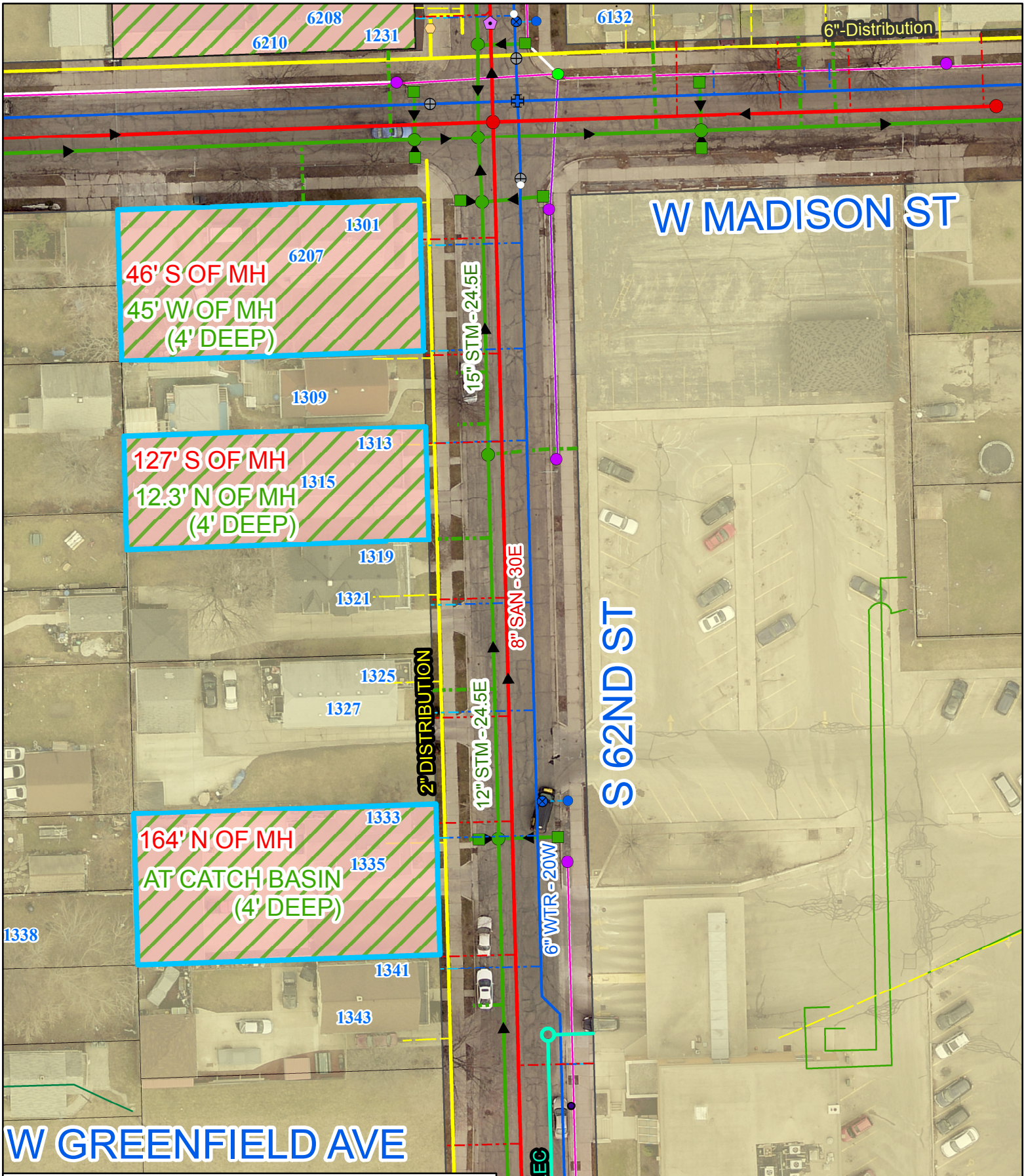


**W MADISON ST**

**LEGEND**

- Lead Water Service Replacement
- Sump Pump/Storm Lateral Installation
- Sanitary Lateral Rehabilitation

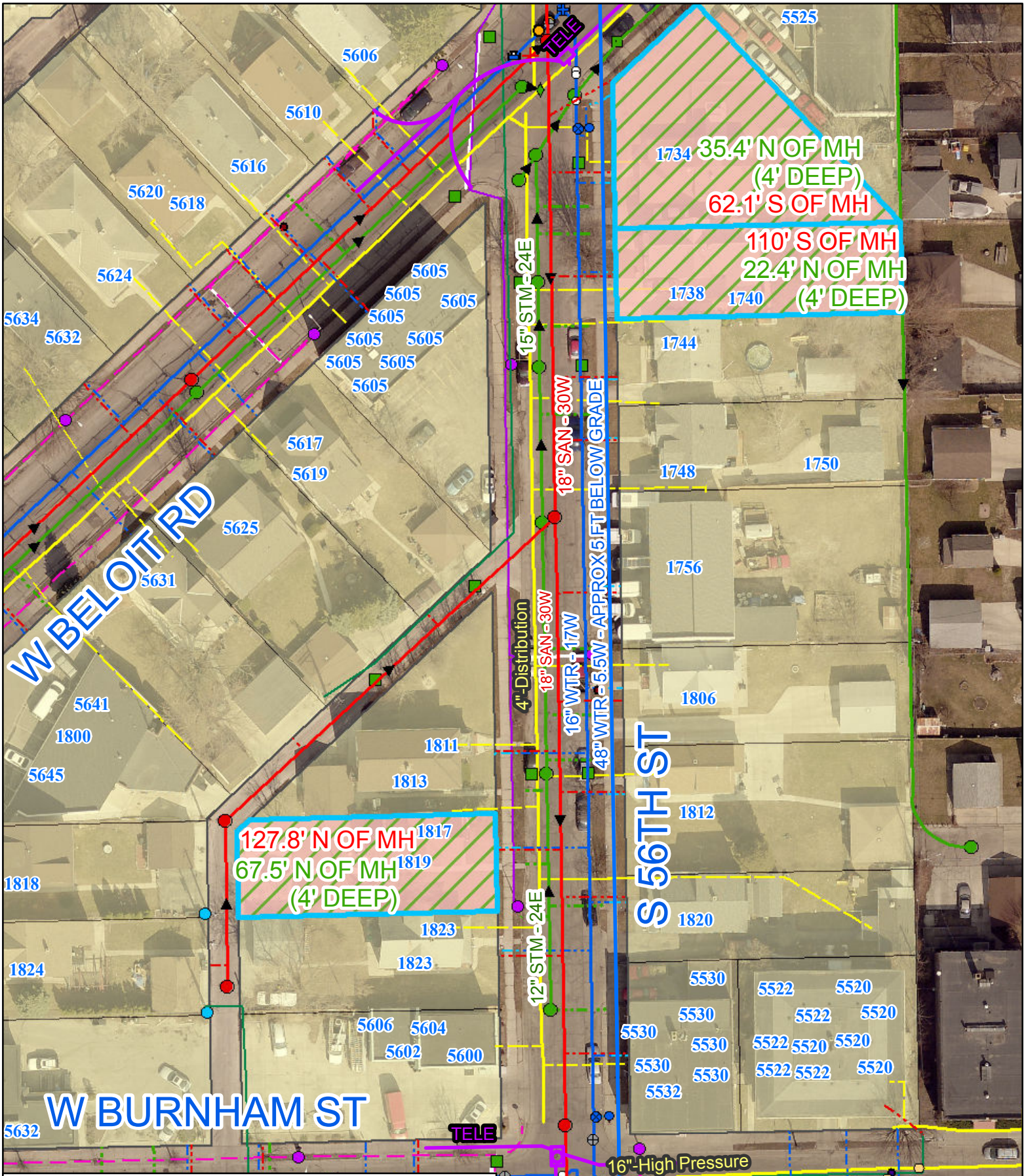




**LEGEND**

- Lead Water Service Replacement
- Sump Pump/Storm Lateral Installation
- Sanitary Lateral Rehabilitation

PG 9  
 S 62ND ST  
 W MADISON STREET TO  
 W GREENFIELD AVENUE



**LEGEND**

- Lead Water Service Replacement
- Sump Pump/Storm Lateral Installation
- Sanitary Lateral Rehabilitation

PG 10  
 S 56TH ST:  
 W BELOIT ROAD TO  
 W BURNHAM STREET





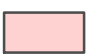
**LEGEND**

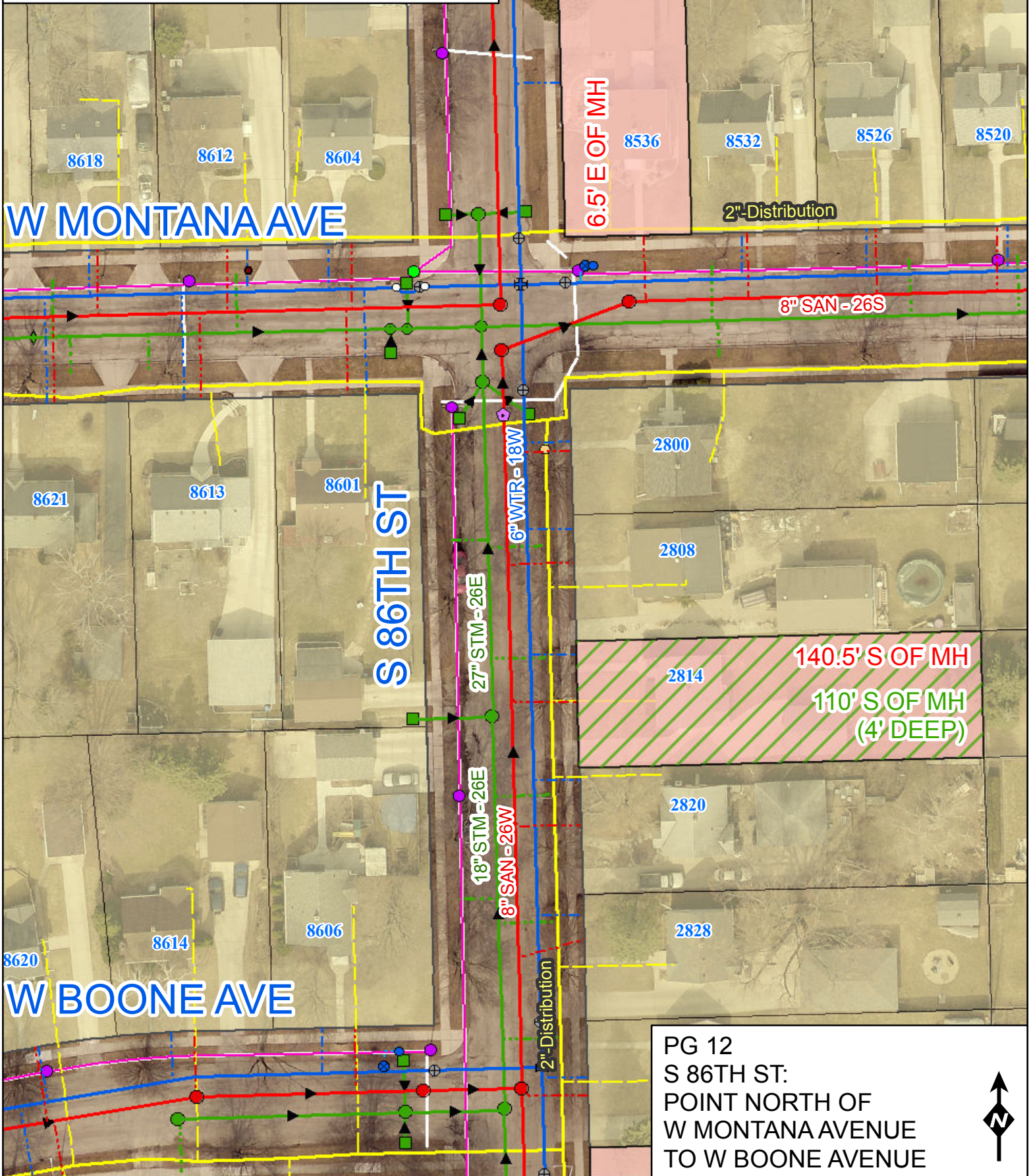
- Lead Water Service Replacement
- Sump Pump/Storm Lateral Installation
- Sanitary Lateral Rehabilitation

PG 11  
 S 56TH ST:  
 W BURNHAM STREET TO  
 W ROGERS STREET



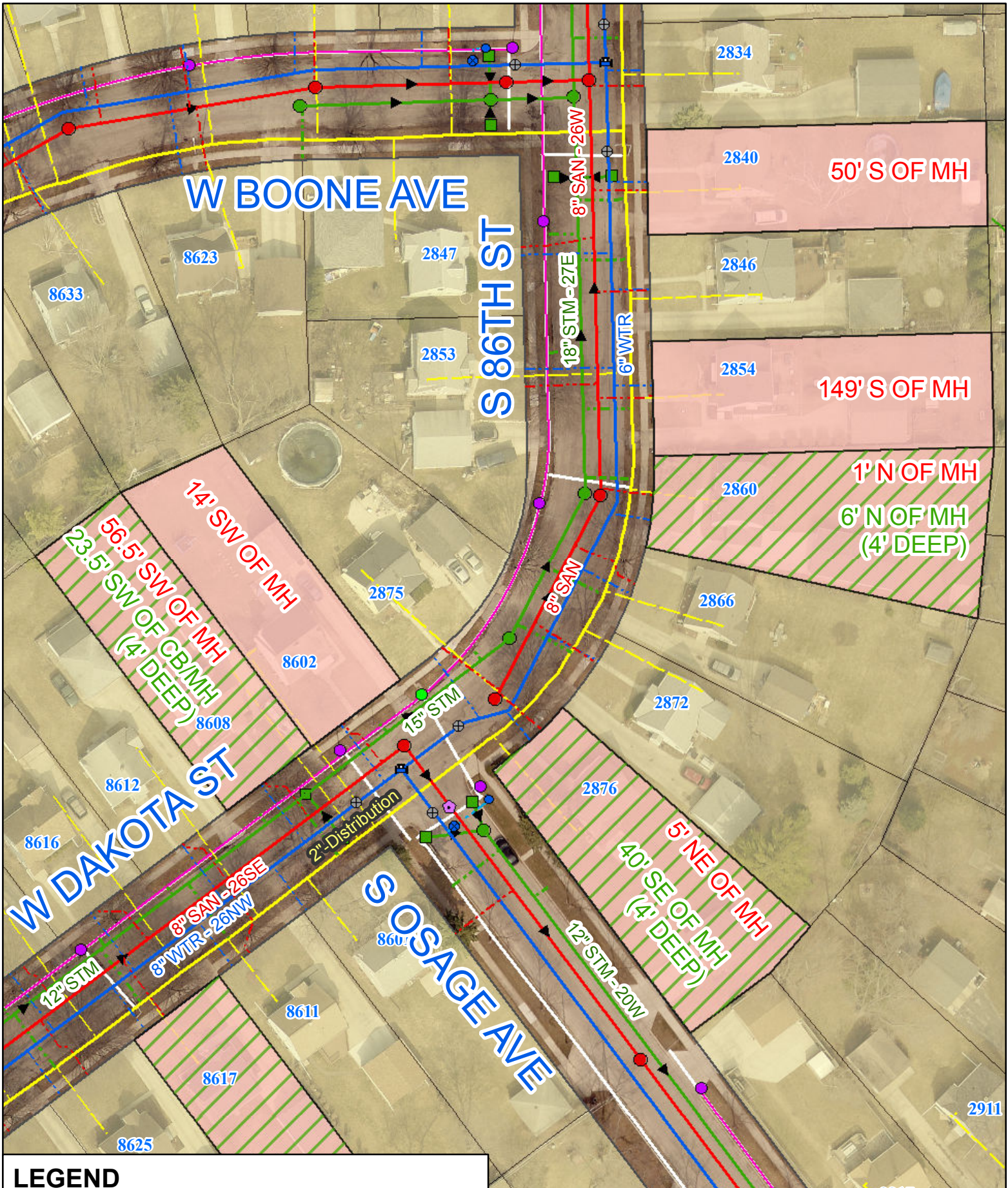
**LEGEND**

-  Lead Water Service Replacement
-  Sump Pump/Storm Lateral Installation
-  Sanitary Lateral Rehabilitation



PG 12  
S 86TH ST:  
POINT NORTH OF  
W MONTANA AVENUE  
TO W BOONE AVENUE






**LEGEND**

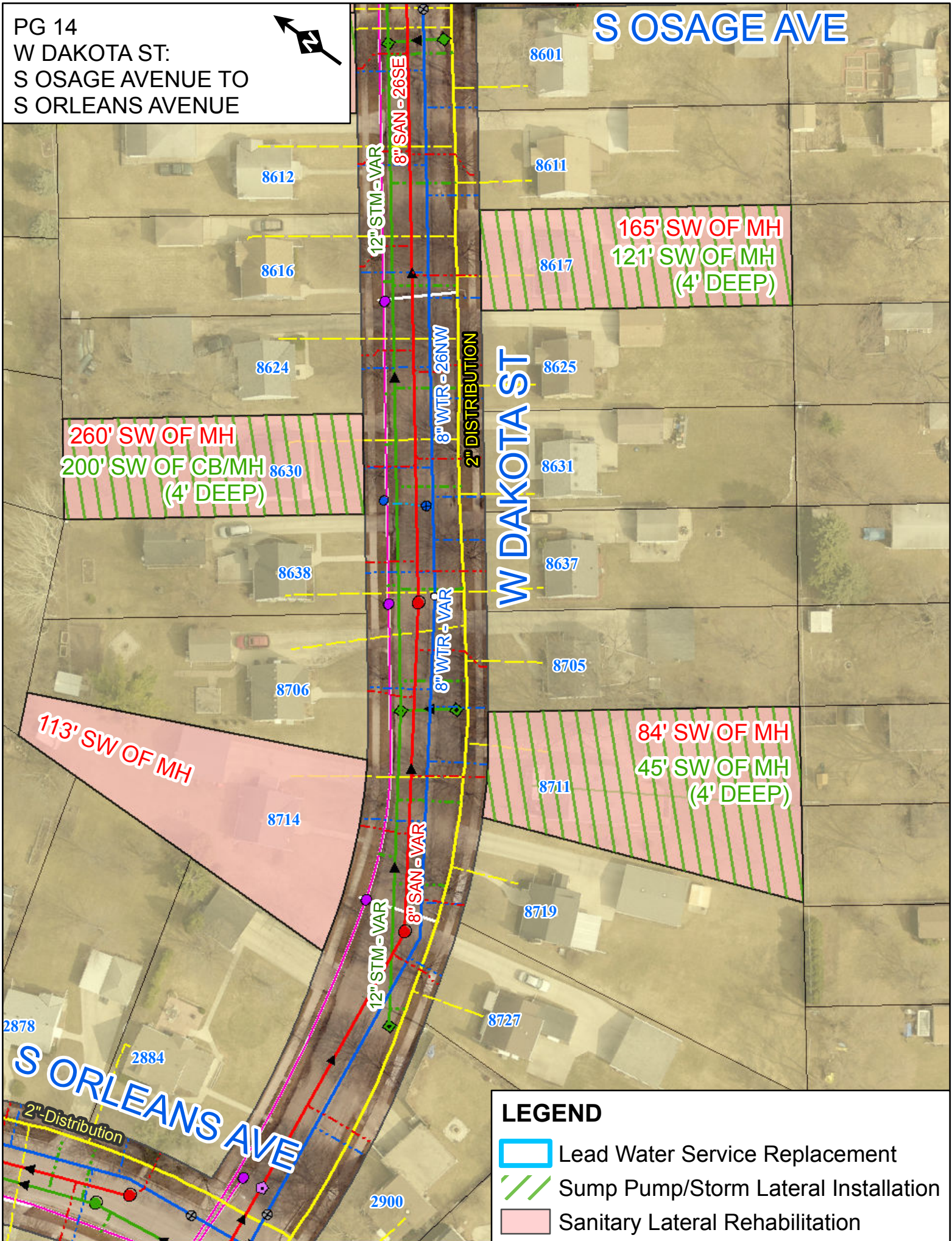
- Lead Water Service Replacement
- Sump Pump/Storm Lateral Installation
- Sanitary Lateral Rehabilitation

PG 13  
 S 86TH ST:  
 W BOONE AVENUE TO  
 S OSAGE AVENUE








S OSAGE AVE



**LEGEND**

-  Lead Water Service Replacement
-  Sump Pump/Storm Lateral Installation
-  Sanitary Lateral Rehabilitation