



CITY OF WEST ALLIS NOTICE OF PUBLIC HEARING

Tuesday, March 15, 2022
7:00 p.m.

NOTICE IS HEREBY GIVEN that the Common Council of the City of West Allis will conduct a public hearing on Tuesday, March 15, 2022, at 7:00 P.M., or soon thereafter in the Common Council Chambers of West Allis City Hall, 7525 W. Greenfield Avenue, West Allis, Wisconsin on the:

Special Use permit to establish a mixed use (commercial and residential), an existing residential duplex property, located at 1416-18 S. 81 St.

Additional project information, comments or questions or concerns can be addressed by emailing planning@westalliswi.gov or calling 414-302-8460.

You may express your opinion in writing to the clerk@westalliswi.gov, prior to the meeting, or in person at the public hearing at the above date, time and location.

Dated at West Allis, Wisconsin, this February 22, 2022

City Clerk

PUBLISH: February 25, 2022 and March 4, 2022

R-2022-0135

NONDISCRIMINATION STATEMENT

The City of West Allis does not discriminate against individuals on the basis of race, color, religion, age, marital or veterans' status, sex, national origin, disability or any other legally protected status in the admission or access to, or treatment or employment in, its services, programs or activities.

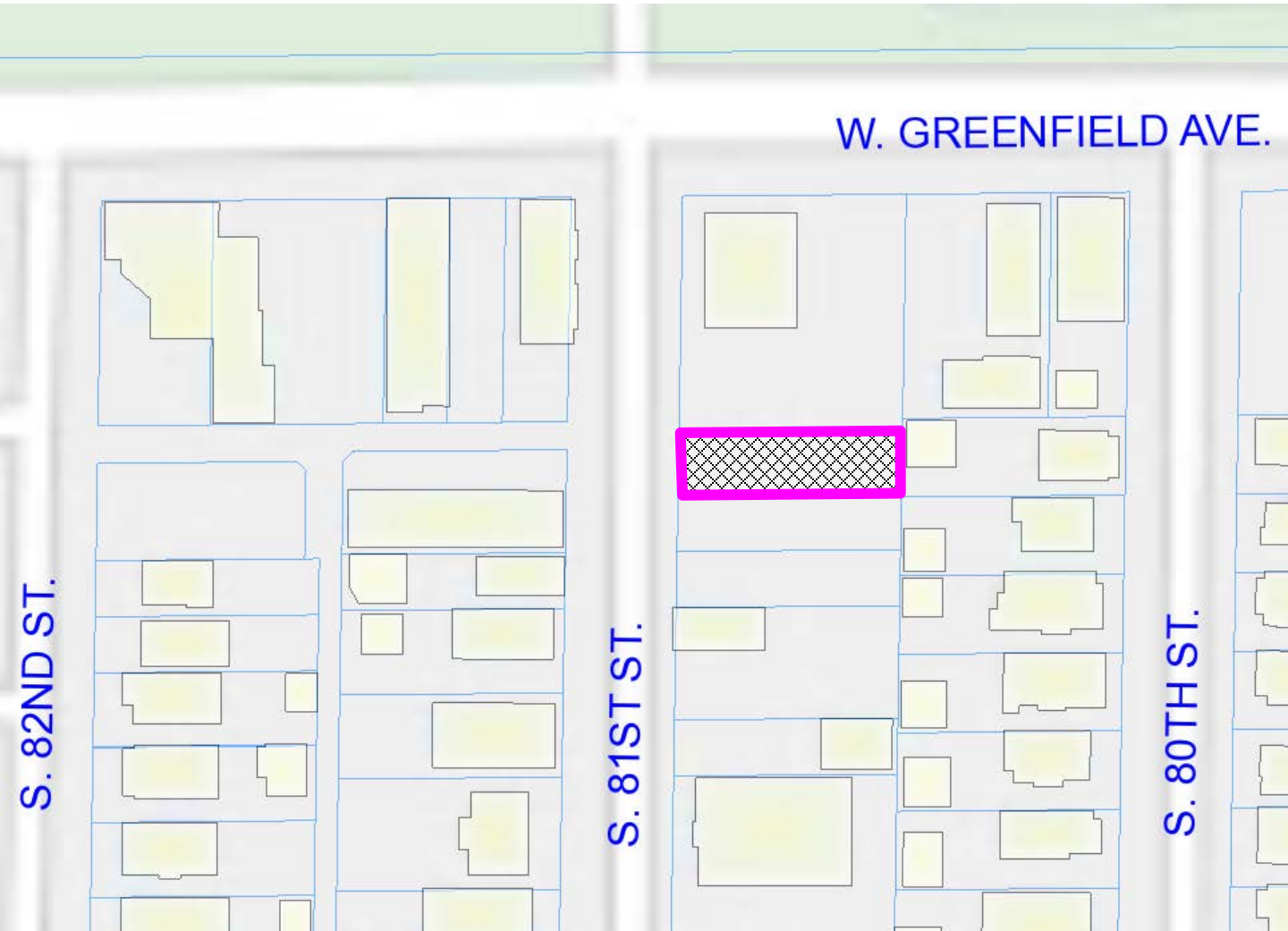
AMERICANS WITH DISABILITIES ACT NOTICE

Upon reasonable notice, the City will furnish appropriate auxiliary aids and services, when necessary, to afford individuals with disabilities an equal opportunity to participate in and enjoy benefits of a service, program or activity provided by the City.

LIMITED ENGLISH PROFICIENCY STATEMENT

It is the policy of the City of West Allis to provide language access services to populations of persons with Limited English Proficiency (LEP) who are eligible to be served or likely to be directly affected by our programs. Such services will be focused on providing meaningful access to our programs, services and/or benefit.

Special Use permit application 1416-18 S. 81 St.



Legend

- Structures
- Parcel
- Project Area